



LEAGUE CITY TEXAS

PARKS, TRAILS, AND OPEN SPACE MASTER PLAN



2024 UPDATE

CLARK CONDON



The following individuals are recognized for their significant contribution to the preparation of the League City Parks, Trails, and Open Space Master Plan - 2024 Update.

Mayor and Council Members

Mayor Nick Long
Justin Hicks - Mayor Pro Tem
Andy Mann - Position I
Tommy Cones - Position II
Tom Crews - Position III
Courtney Chadwell - Position IV
Chad Tressler - Position VI
Sean Saunders - Position VII

City Staff

John Baumgartner - City Manager
Rick Davis - Assistant City Manager
Chien Wei - Director of Parks and Cultural Services
Kris Carpenter - Director of Planning
Kenny Walsh - Assistant Director of Parks and Cultural Services
Bob Duke - Parks Planner/Project Manager
Rick Brezik - GIS Administrator
Cameron Parker - Park Operations Manager

Parks Board

Marcos Jaramillo - Position I
Ange Mertens - Position II
Linda Treadway - Position III
Natalie Dolan - Position IV
Don Kappel - Position V - Chair
Fred Growcock - Position VI
Jay Williams - Position VII - Vice Chair

Section 4-B Industrial Development Corporation

Matthew DeRosier - Position I - Treasurer
Rick Holm - Position II
Mark Brown - Position III - President
Dustee Rivera - Position IV - Secretary
Rusty Tidwell - Position V - Vice President
Malcolm Daly - Position VI
Donald Daughenbaugh - Position VII

Consultant Team

Clark Condon

TABLE OF CONTENTS

2024 UPDATE

A	INTRODUCTION	A1
B	ACCOMPLISHMENTS	B7
C	NEEDS ASSESSMENT AND 5 YEAR ACTION PLAN	C26
D	2023 Public Survey	

2017 PARKS, TRAILS, AND OPEN SPACE MASTER PLAN

1	EXECUTIVE SUMMARY	i
2	INTRODUCTION	1
3	INVENTORY	13
4	NEEDS ASSESSMENT	49
5	RECOMMENDATIONS	79
6	IMPLEMENTATION	109
7	APPENDIX	123
8	MOUNTAIN BIKE TRAILS	124

A

INTRODUCTION

Parks, Trails and Open Space Master Plan - 2024 Update

INTRODUCTION

The City of League City adopted the latest version of the Parks, Trails, and Open Space Master Plan on November 14, 2017. The plan was a result of over a year of information gathering and included numerous public engagement methods in order to understand local needs and desires for future park and recreation development. The plan encompassed the city's 3 Guiding Principals outlined in the 2011 Comprehensive Plan to create a city of great places; provide adequate and efficient use of infrastructure, services and public facilities; and continue to develop an economically sustainable community.

Four unique targets, specific to the development of greenspace, were outlined in the 2017 plan including the following:



These overall goals are still important to the residents of League City today, especially as the population rises and continues to exceed previous projections. When the 2017 plan was adopted, the city was home to nearly 100,000 people. By 2023, the population has grown to over 115,000, and projections estimate the city will be well over 150,000 within the next 10 years.

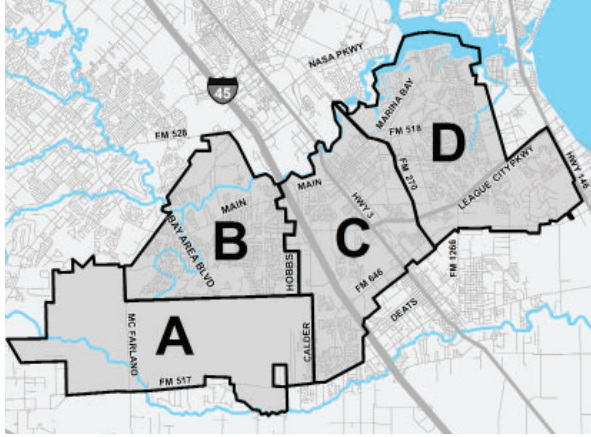
In order to receive additional points for grant funding, the Texas Parks and Wildlife Department requires agencies with department-accepted, locally-endorsed master plans to be updated every 5 years to review completed projects and update current needs. This 5-year update "should include a brief summary of plan accomplishments to-date, as well as applicable updates of demographics, goals and objectives, standards, and maps." The 2024 update to League City's Parks, Trails and Open Space Master Plan is meant to satisfy this requirement.

In 2020 the world faced innumerable challenges due to the Coronavirus pandemic. Many of the effects of this global phenomenon created cultural shifts including the recognition of both the need and desire for extensive and diverse outdoor recreation opportunities.

The 2024 update will document accomplishments since the 2017 plan was adopted and review previously established goals to ensure they meet the city's current needs. This updated plan will provide guidance and identify priorities for the next 5 years so that adequate resources and funding can be allocated by the city and their partners.

UPDATED POPULATION TRENDS

A full demographic profile was completed during the development of the 2017 Parks, Trails and Open Space Master Plan which included projections for the next ten and twenty years in order to estimate the city's future population and needs. For the 2024 update, these projections were



revised to reflect census data from 2020 and updated projections. When the 2017 Plan was adopted, League City expected just over a 150% increase in population from 2000 to 2036. League City is already exceeding those previous projections and is now expected to gain an estimated 25,000 people in just over the next 10 years with the expected population quickly nearing 150,000. This is exceptional growth for a city whose population was less than 50,000 residents only 20 years ago. Utilizing the previously established zone map, shown at the left, population projections were updated in the charts below.

LEAGUE CITY POPULATION TRENDS - 2017 Projections					
Location	2000 Census	2010 Census	2016 Estimate	2026 Projection	2036 Projection
ZONE A	1,260	773	1,051	15,773	+2399% 31,493
ZONE B	15,157	29,364	35,010	32,028	+120% 33,404
ZONE C	10,474	22,600	27,527	32,321	+208% 36,837
ZONE D	20,515	30,734	35,959	40,126	+95% 41,855
TOTAL	47,406	83,471	99,547	120,248	+154% 143,589

Source: US Census Bureau, American Community Survey, City of League City 2023 Land Use Assumptions.

LEAGUE CITY POPULATION TRENDS - Updated 2023 Projections					
Location	2000 Census	2010 Census	2020 Census	2026 Projection	2036 Projection
ZONE A	1,260	773	3,300	8,916	+2898% 37,784
ZONE B	15,157	29,364	39,557	41,654	+193% 44,391
ZONE C	10,474	22,600	27,833	27,915	+166% 29,203
ZONE D	20,515	30,734	43,702	47,067	+129% 49,242
TOTAL	47,406	83,471	114,392	125,552	+238% 160,620

Source: US Census Bureau, American Community Survey, City of League City 2023 Land Use Assumptions.

Population growth is expected to increase by 17,000 *more* residents by 2036 than previous projections. Zone A, previously undeveloped, is still expecting the largest influx of residents while Zones B and D are expecting growth as well. Zone C, still expecting a significant increase, has seen a reduction in projected increase which may be a result of the new homes being built within the southwest portion of the city.

UPDATED DEMOGRAPHIC PROFILE

League City continues to exceed population growth expectations; however, when looking at certain categories within the demographic profile, some projections have shifted. In 2017, households with children under the age of 18 were expected to slightly decline over the next 20 years while households over the age of 65 would be slightly increasing. Updated demographics project a larger decline (-6.4% by 2036) in residents under 18 but a larger increase in residents over the age of 65 (+12.7%). Future design and programming of public park and open space should consider this expected shift in population.

LEAGUE CITY DEMOGRAPHIC PROFILES 2017					
Category	2006 Estimate	2010 Census	2016 Estimate	2026 Projection	2036 Projection
Total Population	64,097	83,471	99,547	120,249	143,588
Under 18	28.7%	28.4%	26.7%	26.2%	25.1%
Age 18-64	64.4%	64.2%	63.5%	63.0%	62.2%
Age 65+	6.9%	7.4%	9.8%	10.9%	12.7%
Total Households	23,012	30,048	34,966	39,757	47,036
Household w/ Children	41.2%	40.7%	40.9%	39.4%	37.6%

Source: US Census Bureau, American Community Survey, City of League City 2023 Land Use Assumptions.

LEAGUE CITY DEMOGRAPHIC PROFILES - CURRENT AND PROJECTED					
Category		2010 Census	2020 Census	2026 Projection	2036 Projection
Total Population		83,471	114,392	125,552	160,620
Under 18		28.4%	26.1%	23.9%	22.0%
Age 18-64		64.2%	60.2%	59.2%	57.9%
Age 65+		7.4%	13.7%	16.9%	20.1%
Total Households		30,048	40,421	45,822	60,202
Household w/ Children		40.7%	39%	36.1%	33.1%

Source: US Census, American Community Survey, PCensus, CDS Community Development Strategies

B

ACCOMPLISHMENTS

.....
Parks, Trails and Open Space Master Plan - 2024 Update

2017 TO 2024

The 2017 Parks, Trails and Open Space Master Plan outlined each park and trail within the city's 857 acres of parkland and 24 miles of hike and bike trail corridors. The plan identified deficits in available park space for current and future residents and also made recommendations for new programming and updates to existing park and trail spaces.

Since the 2017 plan was adopted, the city, along with local partners, has prioritized the improvement of park spaces throughout the city. The chart below, along with a more in-depth description within the following pages, highlights each of the accomplishments since the 2017 plan was adopted.

PROJECTS COMPLETED SINCE 2017			
	Project	Zone	Project Type
5 Existing Park Improvements	Renovated League Park	C	Existing Park
	Upgraded Bayridge Park	D	Existing Park
	Added new entrance to the Sportsplex	C	Existing Park
	Restroom addition at Hometown Heroes Park	C	Existing Park
	Playground upgrades at multiple parks		Existing Park
4 New Facilities	Installed Coastal Prairie at Nature Center	D	New Facility
	Added Dog Park at Lynn Gripon @ Countryside Park	B	New Facility
	Added Dog Park at Hometown Heroes Park	C	New Facility
	Installed Adventure Course at Hometown Heroes Park	C	New Facility
1 New Park	Developed Master Plan for Bay Colony Park	A	New Park
2 Trail Improvements	Hike and Bike Trails Wayfinding Signage Phase 1	B	Existing Trail
	Extended Claremont Trail	B	Existing Trail
5 New Trail Projects	Developed Mountain Bike Trails Chapter Amendment	All	Planning - Trails
	Developed Clear Creek Master Plan	All	Planning - Trails
	Added 5K Trail at Hometown Heroes Park	C	New Trail
	Developed FM 518 Bypass Hike and Bike Trail	D	New Trail
	Developed Mountain Bike Course Phase 1 at Lynn Gripon Park	B	New Trail
2 Acquisitions	Acquired Lobit Park from Galveston County	D	Acquisition
	Leased and created League City Community Center	C	Acquisition
9 New Rec Programs	Added adult fitness and wellness programs	All	Programming
	Added senior adult fitness and wellness programs	All	Programming
	Added environmental education programs	All	Programming
	Added aquatics programs	All	Programming
	Added culinary arts programs	All	Programming
	Added cultural arts programs	All	Programming
	Added multiple programs for individuals with disabilities	All	Programming
	Added teen programs	All	Programming
	Added community garden program	All	Programming

IMPROVEMENTS TO EXISTING PARKS

League City has completed the following improvements to the existing parks system since the adoption of the 2017 Parks, Trails and Open Space Master Plan.

LEAGUE PARK

Renovation completed in 2021

Located within the city's Historic District, League Park was widely renovated to improve pedestrian access, replace lighting and site furniture and better facilitate the city's numerous events hosted within the Park. Drainage improvements were installed and parking was relocated to create open space. The existing playground also received new surfacing.



BAYRIDGE PARK

Renovation completed in 2023

A small park that serves an older neighborhood in the east side of the city, Bayridge Park was in need of an upgrade. Fencing was removed throughout the park, the existing playground and shade structure were replaced and new site furnishings installed. A loop trail was added around the park and the existing basketball court and baseball field were upgraded.



CHESTER L. DAVIS SPORTSPLEX

New entrance completed in 2015

This is the 3rd park entrance to Chester L. Davis Sportsplex, and it is located at the southeast corner of the northern parking lot. It runs along the southern side of the Centerpoint easement, where it connects at Walker Street with a median cut for left turning traffic. This project also included the addition of a right turn lane into the existing park entrance off SH96.



HOMETOWN HEROES PARK

New restroom completed in 2020

With such a large footprint, Hometown Heroes Park was in need of another restroom facility to extend access to all parts of the park. A restroom facility was added near the athletic fields and playground area for park users.



PLAYGROUND UPGRADES

Renovations completed in 2022

Existing playgrounds were upgraded and replaced in multiple parks including 1 at Rustic Oaks Park, 2 at the Sportsplex, 2 at Countryside Park, 1 at Newport Park and 1 at Bayridge Park.



NEW FACILITIES AT EXISTING PARKS

League City has developed the following new facilities within existing parks since the adoption of the 2017 Parks, Trails and Open Space Master Plan.

COASTAL PRAIRIE INSTALLATION

Dr. Ned and Fay Dudley Nature Center
Installation completed in 2022

A multi-year effort to remove invasive trees and install 11 acres of coastal prairie, this partnership project with the Galveston Bay Foundation and League City Garden Club is a move to restore and protect remnant coastal prairies once found within this area.



PICKLEBALL COURTS

Installation completed in 2023

Pickleball courts were striped at the existing basketball court at Newport Park as well as at recently resurfaced existing basketball courts at Lynn Gripon at Countryside Park.



DOG PARK

Lynn Gripon at Countryside Park
Installation completed in 2017

This 3.5-acre dog park was added where the former Countryside Wastewater Treatment Plant was located. This was the first dog park in League City, and design through construction coordination was completed by City staff.



ADVENTURE COURSE

Hometown Heroes Park
Installation completed in 2022

The Adventure Course at Hometown Heroes Park was championed by citizens with interests in running, outdoor exercise, and overall health improvements. A pre-manufactured system was purchased and installed which can be utilized by youth and adults to increase mobility, agility, and strength.



DOG PARK

Hometown Heroes Park
Installation completed in 2022

The east side dog park was developed within a previously undeveloped portion of Hometown Heroes Park. This feature includes 20 additional parking stalls, a pedestrian crossing, and access gates which will be open during daylight hours.



NEW PARK DEVELOPMENT

League City has been working to develop additional park space within the city to increase the level of service for the growing population. The following effort has been completed since the adoption of the 2017 Parks, Trails and Open Space Master Plan.

BAY COLONY PARK MASTER PLAN

Master Plan finalized in 2022

Bay Colony Park is a 106-acre undeveloped park on the west side of League City. In the past few years, the city has been working on a master plan and implementation strategy to develop the park into a regional facility complete with ballfields, sports courts, disc golf, playground and picnic areas.



IMPROVEMENTS TO EXISTING TRAILS

League City has completed the following improvements to the existing trails system since the adoption of the 2017 Parks, Trails and Open Space Master Plan.

HIKE AND BIKE TRAILS WAYFINDING SIGNAGE PHASE 1

Installation completed in 2022

To improve access to existing trail systems within the west side of League City, 21 signs were installed within Lynn Gripon at Countryside Park, as well as along Magnolia Creek trails, the Claremont Trails and Rustic Oaks Park.



CLAREMONT TRAIL EXTENSION

Completed in 2020

This 1.3-mile trail extended existing trails within the Claremont Park subdivision to Clear Creek Meadows, the Landing and Cedar Landing subdivisions.



NEW TRAIL SYSTEMS

League City has completed the following new trail systems since the adoption of the 2017 Parks, Trails and Open Space Master Plan.

MOUNTAIN BIKE TRAILS CHAPTER

Amendment to the 2017 master plan completed in 2022

To meet local demand for mountain biking options within the City, a detailed chapter was created to serve as a guide for all current and future mountain bike trails within League City including design principles, trail maintenance, and opportunities for future developments.



CLEAR CREEK MASTER PLAN

Plan adopted in 2023

To determine future opportunities along Clear Creek the city commissioned a detailed guide for recreation and tourism opportunities along the corridor. Consideration for future land use, development character, and multi-modal connectivity were some main focus points in the development of the Clear Creek Master Plan.



5K TRAIL @ HOMETOWN HEROES PARK

Completed in 2022

One of the 3 improvements added to Hometown Heroes Park in 2022, the 5K loop encircles the existing park with a 10' wide decomposed granite trail which is a preferable route to avoid street closures during 5K events.



FM 518 BYPASS HIKE AND BIKE TRAIL

Completed in 2020

This 10ft wide and 2.44-mile trail was a part of the TXDOT federal grant fund 60/40 match: The trail runs south along FM270 from Genco Canal to Five Corners intersection as well as from the entrance of Clear Creek Intermediate on FM2094 to Davis Road, east along canal to edge of CCISD property, then follows CCISD property line south to FM518 at Louisiana Avenue intersection



MOUNTAIN BIKE COURSE PHASE 1 @ LYNN GRIPON AT COUNTRYSIDE PARK

Completed in 2021

League City received a substantial amount of requests from local residents who wanted to practice their off-road biking skills locally, rather than travelling to other areas in the region. This phase 1 trail includes over 3,000lf of beginner-type mountain bike trails.



NEW PARKLAND ACQUISITION

Since the 2017 plan was adopted, League City has been seeking ways to increase park acreage for city residents.

LOBIT PARK

Acquired in 2023

League City acquired Lobot Park from Galveston County. This 28-acre park contains a baseball field, parking, restrooms and a pavilion. The city made some initial improvements at the park including replacing site furniture and planting trees as well as re-surfacing the parking lot and driveway. Existing lamps were also replaced at the baseball field.



LEAGUE CITY COMMUNITY CENTER

Acquired in 2021

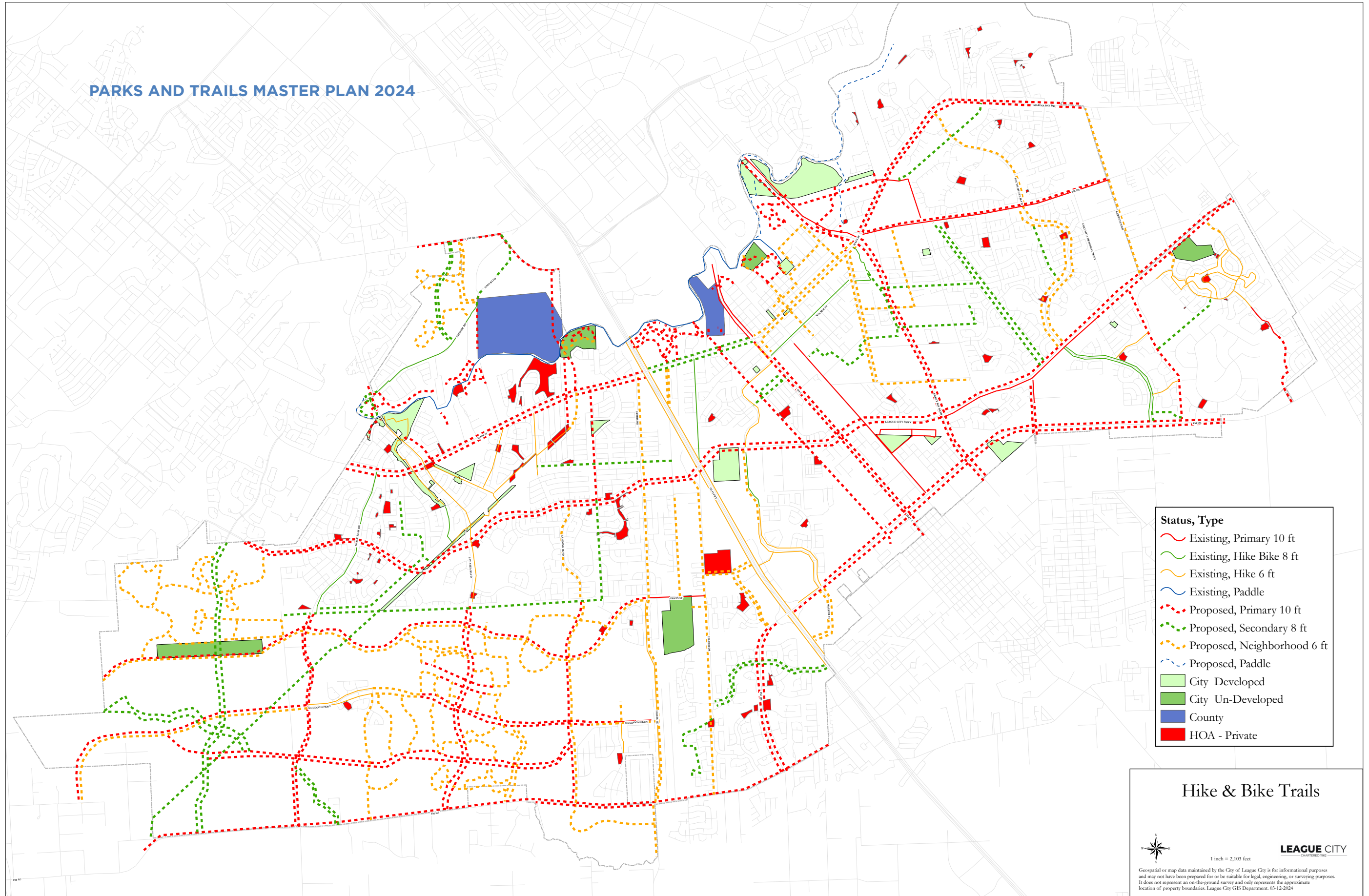
League City entered into a long term lease with Clear Creek ISD for the former League City School located on South Kansas. This historic building was renovated and now houses both adult and youth programming.



PARK AND TRAIL PLAN - UPDATED

The following page provides an updated map of League City indicating existing and proposed park and trail facilities.

PARKS AND TRAILS MASTER PLAN 2024



Hike & Bike Trails

NEW PROGRAMMING

The public survey performed for the 2017 plan indicated a desire for new programming types within the city's park system. League City has incorporated the following new recreational programs since the adoption of the 2017 Parks, Trails and Open Space Master Plan.

ADULT FITNESS

The city added the following adult fitness classes to available programming:

- Power Yoga
- Kickboxing
- Tennis
- High-Lo Fitness
- Tai Chi
- Mens Basketball
- Mens Volleyball
- Martial Arts

SENIOR ADULT FITNESS

The city added the following senior adult fitness classes to available programming:

- Strength and Conditioning
- Walk with Ease
- Instructional Pickleball
- Pilatai
- Social Dance

ENVIRONMENTAL EDUCATION

The city added the following environmental education programs:

- Nature with Kristine
- Astronomy in the Park
- Gardening

AQUATICS

The city added the following aquatic classes to available programming:

- Stroke Clinics
- Private Lessons
- Water Aerobics
- Junior Guard

CULINARY ARTS

The city added the following program:

- Mini chefs cooking classes

CULTURAL ARTS

The city added the following cultural arts programming:

- Production
- Homeschool Art
- Tiny Tots Art
- Theater Camps
- Juneteeth Mini Art Canvas

PROGRAMS FOR PEOPLE WITH DISABILITIES

The city added the following programs to expand opportunities for people with disabilities:

- Hewitts Heroes
- Adaptive Dance
- Water Aerobics
- Bocce Ball
- Tennis
- Beep Baseball
- Zumba
- Pickleball
- Gardening
- Rock Painting
- E-sports
- Chess
- Kitchen Skills
- Adaptive Sports

PROGRAMS FOR TEENS

The city added the following programs for teens:

- Junior Guard
- CIT Program

PROJECTS IN PROGRESS

Several additional projects are currently in process that will improve the city's park and recreational spaces. These projects are in a variety of stages - either in early planning stages, under design or ready to be constructed. The following projects will be completed within the next few years.

FM270 PUBLIC BOAT RAMP RENOVATIONS

DESIGN PHASE

The city is facilitating communication between the Texas Parks & Wildlife Department and the US Fish & Wildlife Department to achieve a June 2024 deadline to reach bidding and construction. Construction is estimated to take 9 to 10 months.

MOUNTAIN BIKE COURSE PHASE 2 - LYNN GRIPON AT COUNTRYSIDE PARK

DESIGN PHASE

The city is currently under design for improvements to Magnolia Creek which runs through the northern side of Countryside Park. While assessing opportunities to clean out the existing natural drainageway, the city is also reviewing opportunities for a low water crossing location in order to access the 14 acres on the east side of the park. This area is planned for the expansion of the existing mountain bike course to provide separate areas for novice bikers and more experienced bikers.

CLEAR CREEK CONNECTIONS PADDLE TRAIL & KAYAK LAUNCHES

DESIGN PHASE

Early stages of this project were delayed due to environmental and archeological issues to avoid impacting a Native American site. The preliminary review has been sent to TXDOT, and the city is awaiting next steps. The consultant is expected to send a "final plan" submittal in March.

WAYFINDING SIGNAGE PHASE 2

DESIGN PHASE

The initial signs were installed in Phase 1 to improve wayfinding to city parks and along city trail systems. Phase 2, currently under design, will include an additional 26 signs located within existing parks and along additional trail segments. Construction is expected to begin in early 2024.

BAY COLONY PARK

DESIGN PHASE

The Texas Railroad Commission is working on remediation efforts. There are also numerous coordination efforts being executed by the city and TXDOT to ensure traffic flows smoothly. Construction documents are expected to be complete and reviewed by the city by summer 2024.

GILMORE ELEMENTARY/CLAREMONT CONNECTOR TRAIL BRIDGE PROJECT

DESIGN PHASE

The city has reviewed all layouts and is proceeding with what is anticipated to be the most cost effective option that also provides the most direct route. Aquisition of easements is in progress. Bidding is anticipated for the 1st quarter of 2024.



NEEDS ASSESSMENT AND 5 YEAR ACTION PLAN

Parks, Trails and Open Space Master Plan - 2024 Update



NEEDS ASSESSMENT

During the development process of the 2017 Parks, Trails and Open Space Master Plan, significant public outreach was performed which included stakeholder discussions, focus group meetings, large public meetings and a public survey to provide guidance for the types of recreation opportunities the residents of League City desired and prioritized.

PUBLIC INPUT

In March 2023, League City retained ETC Institute to conduct an updated parks and recreation needs assessment survey. This survey included similar questions to those provided in the 2016 survey as well as the addition of specific questions to address current concerns and planned projects. During a two month period, the consultant received a total of 421 survey responses which were reviewed and tabulated. A complete report of the survey assessment is provided in the appendix.

Question #18 within the survey asked respondents "regarding possible future projects for which the city would allocate resources, please indicate the level of importance you would place on the following projects." The list of projects consisted of 28 items including parks, preservation and trails. The top 10 projects include:

TOP 10 PREFERRED FUTURE PROJECTS
Preservation of critical wildlife habitat areas
Large parks dedicated to passive uses
Preservation of historic sites/museums
Off-street paths for hiking/jogging/biking
Acquisition of open space lands for preservation/conservation
Large parks dedicated to both active and passive uses
Remodel/Expand existing park facilities
Environmental/nature center
Acquisition of open space lands for future parks
Expansion of existing recreational programs

The survey also analyzed both the importance, or prioritization given, to a particular park or programming type by survey respondents as well as their perceived unmet need for each. This analysis provided a Priority Investment Rating (PIR) to gauge the importance of funding, developing and maintaining certain parks and recreation investments.

High priority outdoor recreation needs are consistent with the 2017 plan which included trails, community gardens, and elements typically found in neighborhood and community type parks. Adult fitness and wellness programs, senior fitness and wellness programs, indoor swimming pool, and environmental/nature education programs were priorities in the 2017 plan as well.



HIGH PRIORITY NEEDS	
OUTDOOR RECREATION	INDOOR RECREATION AND PROGRAMMING
Community Gardens	Adult Fitness and Wellness Programs
Community Parks	Senior Adult and Fitness Programs
Neighborhood Parks	Indoor Swimming Pool
Mountain Bike Trails	Environmental/Nature Education Programs
Pickleball Courts	City Sponsored Special Events
	Community Theatre

Medium priority facilities identified in the 2023 survey were also priorities identified in the 2017 plan including an adventure course, splash pads, gardens, disc golf course, bike facilities, and dog parks. Medium priority indoor recreation and programming consistent with the 2017 plan include a performing arts center, aquatics programming, culinary arts, dog training, cultural arts programming, programs for individuals with disabilities and teen programs.

MEDIUM PRIORITY NEEDS	
OUTDOOR RECREATION	INDOOR RECREATION AND PROGRAMMING
Adventure Facility	Aquatics Programming
Splash Pad	Culinary Arts
Ornamental/Interpretive Gardens	Multipurpose Library/Community Center
Disc Golf Course	Dog Training
Bike Park	Cultural Arts Programming
Off-leash Dog Parks	Performing Arts Center
Game Tables	Programs for Individuals with Disabilities
	Teen Programs
	Adult Sports Programs
	Youth Summer Camp Programs
	Youth Fitness and Wellness Programs
	Before and After School Programs
	Multigenerational Community Center
	Intergenerational Programming
	Youth Sports Programs
	Outdoor Skill/Adventure Programs

A public meeting was held on February 20, 2024 at the Johnnie Arolfo Civic Center to update residents on the progress the city has made on numerous park and recreation related projects since 2017 as well as gather input on projects scheduled for the next 5 years.

A draft of the updated plan was presented to the city’s Parks Board on March 18, 2024 and was approved at the April 15, 2024 meeting. The plan was presented to City Council on April 23, 2024 for adoption at the May 14, 2024 meeting.

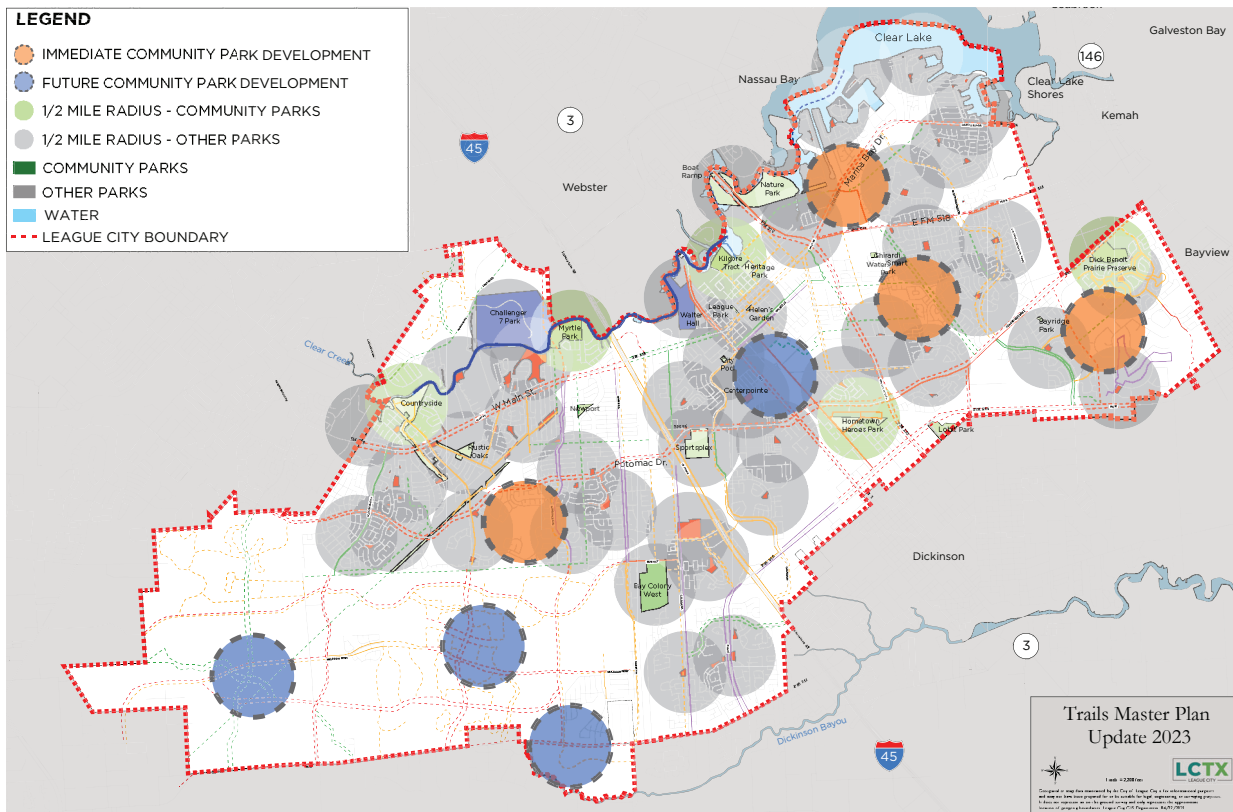


LEVEL OF SERVICE

As the population of League City increases, the need to acquire land for additional park acreage becomes more critical. Although the city is currently in negotiations to acquire a 100 acre parcel which would be suitable for a multi-use regional park, smaller parks such as community type parks and neighborhood parks are still essential.

FUTURE PARK DEVELOPMENT - COMMUNITY PARKS

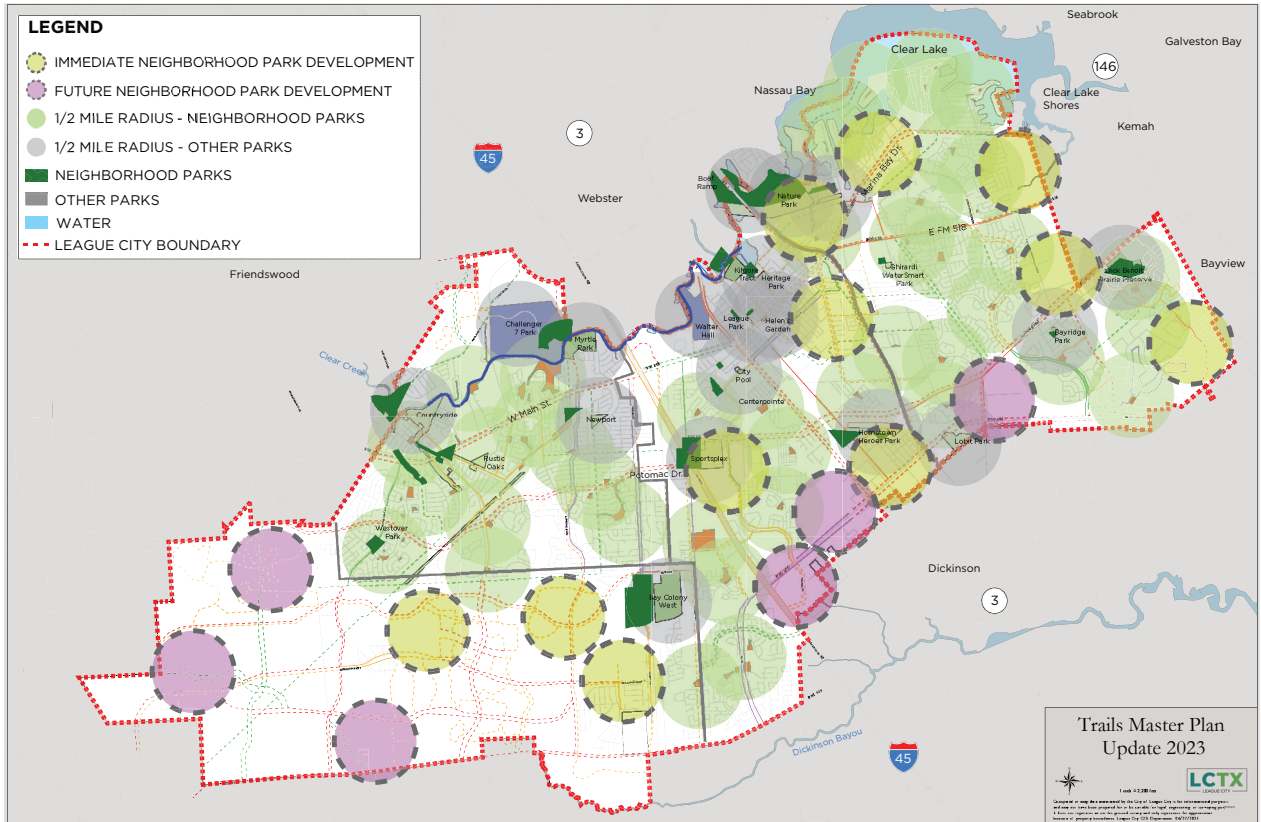
Given existing population and expected growth, several areas within League City are still lacking community park space which typically includes a mix of passive and active recreation. The map, below, has been updated with the city's current parks plan and recommended future development.





FUTURE PARK DEVELOPMENT - NEIGHBORHOOD PARKS

Although several of the master-planned communities currently under construction in the southwest portion of the city intend to include park space, several areas within League City are still lacking neighborhood park space which are generally located within residential areas and can be easily accessed through pedestrian sidewalks or trails. The map, below, has been updated with the city's current parks plan and recommended future development.



FUTURE INITIATIVES

League City is also currently exploring and evaluating future initiatives at The Ballpark at League City, a large sports-centric park formally known as "Big League Dreams" as well as partnerships with adjacent entities including future improvements and programming at the Galveston County owned Walter Hall Park.



5 YEAR ACTION PLAN

Over the next 5 years the city should continue to progress high priority projects especially those that align with both the 2017 and 2023 public survey results. Additional projects should be considered to plan for future facilities to support the city's growing population. A complete update of the parks, trails and open space master plan should be scheduled and budgeted for in 2029.

PROJECT PRIORITIES - Immediate Needs (2024 - 2029)				
Project	Estimated Cost	Status	Zone	Project Type
UPGRADE NEWPORT PARK	\$800,000	Design	B	Existing Park
RENOVATE CITY BOAT RAMP	\$1.5M	Design	C	Existing Park
RENOVATE LOBIT PARK	\$4.2M	Proposed	D	Existing Park
CHESTER L. DAVIS FIELD CONVERSION	\$350,000	Proposed	C	Existing Park
HOMETOWN HEROES PARK - EAST SIDE ACCESS	\$800,000	Design	C	Existing Park
NATURE CENTER IMPROVEMENTS	\$900,000	Proposed	D	Existing Park
WESTOVER PARK COMMUNITY CTR. (\$28.5M) & INDOOR POOL (\$11.5M)	\$40M	Proposed	B	New Facility
DEVELOP HCFCD PARK	\$3.1M	Proposed	B	New Park
DEVELOP BAY COLONY PARK	\$44M	Design	C	New Park
DEVELOP KILGORE TRACT PHASE 1 TRAIL	\$3M	Design	C	New Park
EXTEND PADDLE TRAILS TO NATURE CENTER	\$1M	Design	C, D	Existing Trail
EXTEND PADDLE TRAILS TO KANSAS AVE	\$1M	Design	C	Existing Trail
EXTEND CLAREMONT TRAIL TO GILMORE ELEM.	\$1M	Design	B	Existing Trail
EXTEND WEBSTER TRAIL TO LEAGUE CITY INTERMEDIATE SCHOOL	\$2.2M	Design	D	Existing Trail
DEVELOP HERITAGE SIGNATURE TRAIL	\$1.2M	Proposed	C	New Trail
DEVELOP HIKE & BIKE TRAIL WAYFINDING SIGNAGE PHASE 2	\$500,000	Design	B, C, D	New Trail
TXDOT TRAIL FROM FM 270 TO SH146	\$2.5M	Design	D	New Trail
TXDOT TRAIL FROM HWY 3 TO WALKER ST	\$200,000	Construction	C	New Trail
TXDOT TRAIL FROM ROSS ELEM. TO PALIMINO RD	\$3M	Design	C	New Trail
DEVELOP MOUNTAIN BIKE COURSE AT LYNN GRIPON PARK PHASE 2	\$1M	Design	C	New Trail
ACQUISITION OF 100 ACRES		Negotiation	A	Acquisition
ACQUISITION OF ADDITIONAL PARKLANDS	\$2M	Proposed		Acquisition

- Improvements to Existing Parks
- New Facilities
- New Park Development

- Existing Trail Extensions
- New Trail Systems
- Acquisition