

30' 4" RADIUS OF MANHOLE LOCATED AT NORTH SIDE  
 MATCH BRAC PARK ELEV 10.09 (1978 DATUM)  
 CHISEL IN SE CORNER OF EAST PILE FOOTING  
 BENT STA 52+68.5 ELEV 277

**FM 270 BOAT RAMP FACILITIES  
 PART I**

Being a tract of land containing 1.1 acres, more or less out of the S.F. Austin League, A-2 Division "A" League City Lots 40-41.

- BEGINNING:** At a concrete monument found in the westerly right-of-way line of FM 270, said point also being a point of intersection with the South bank of Clear Creek with said right-of-way line.
- THENCE:** Along said right-of-way line, S 41° 10' 13" E, 303.5 feet to a point for corner;
- THENCE:** N. 48° 49' 47" E, a distance of 245.0 feet to a point for corner;
- THENCE:** N. 41° 10' 13" W, parallel with said westerly right-of-way line of FM 270, to the intersection of the South bank of Clear Creek, approximately 215';
- THENCE:** Southerly and Westerly along and with the meanders of the south bank of Clear Creek as follows:  
 S 83° 49' 47" W, 50.0 feet to a point for corner  
 S 68° 49' 47" W, 165.0 feet to a point for corner  
 S 49° 45' 03" W, 47.71 feet to the place of beginning;  
 containing 1.1 acres, more or less.

**FM 270 BOAT RAMP FACILITIES  
 PART II**

- COMMENCING:** At a concrete monument, found in the westerly right-of-way line of FM 270, said point also being a point of intersection with the south bank of Clear Creek with said right-of-way line;
- THENCE:** Along said right-of-way line, S 41° 10' 13" E, 541.0 feet to be point for corner;
- THENCE:** N. 48° 49' 47" E, 76.0 feet to the point of beginning and the S.W. corner of the herein described tract;
- THENCE:** N. 3° 49' 47" E, 28.28 feet to a point for corner;
- THENCE:** N 48° 49' 47" E, 149.0 feet to a point for the S.E. corner;
- THENCE:** N 41° 10' 13" W, parallel with the right-of-way line of FM 270, 185.0 feet to a point for the N.E. corner;
- THENCE:** S. 48° 49' 47" W, 99.0 feet to a point for the beginning of a curve to the left;
- THENCE:** 109.96 feet along the arc of said curve, having a radius of 70 feet, a central angle of 90°, and a chord which bears S. 3° 49' 47" W, 98.99 feet to a point for the end of said curve;
- THENCE:** S. 41° 10' 13" E., parallel to the right-of-way line of FM 270, 136.0 feet to the point of beginning, containing .8 acres, more or less.

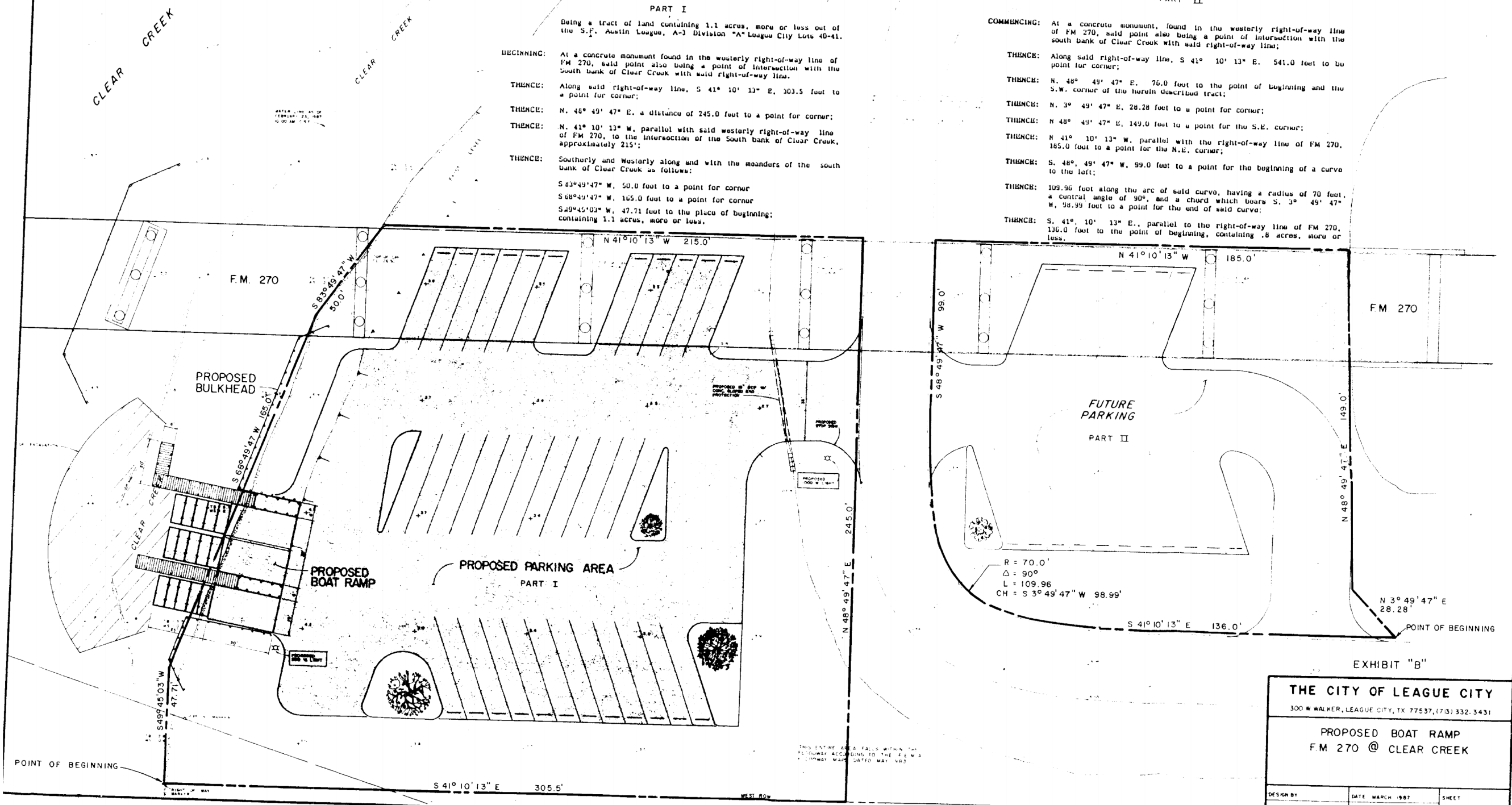


EXHIBIT "B"

<b>THE CITY OF LEAGUE CITY</b>		
300 W WALKER, LEAGUE CITY, TX 77537, (713) 332-3431		
<b>PROPOSED BOAT RAMP FM 270 @ CLEAR CREEK</b>		
DESIGN BY	DATE MARCH 1987	SHEET
OWN BY E.G.	CHECKED BY	
NOT TO SCALE	APPROVED BY	OF

THIS ENTIRE AREA FALLS WITHIN THE  
 RIGHTWAY ACCORDING TO THE F.E.W.'S  
 RIGHTWAY MAP DATED MAY 1983