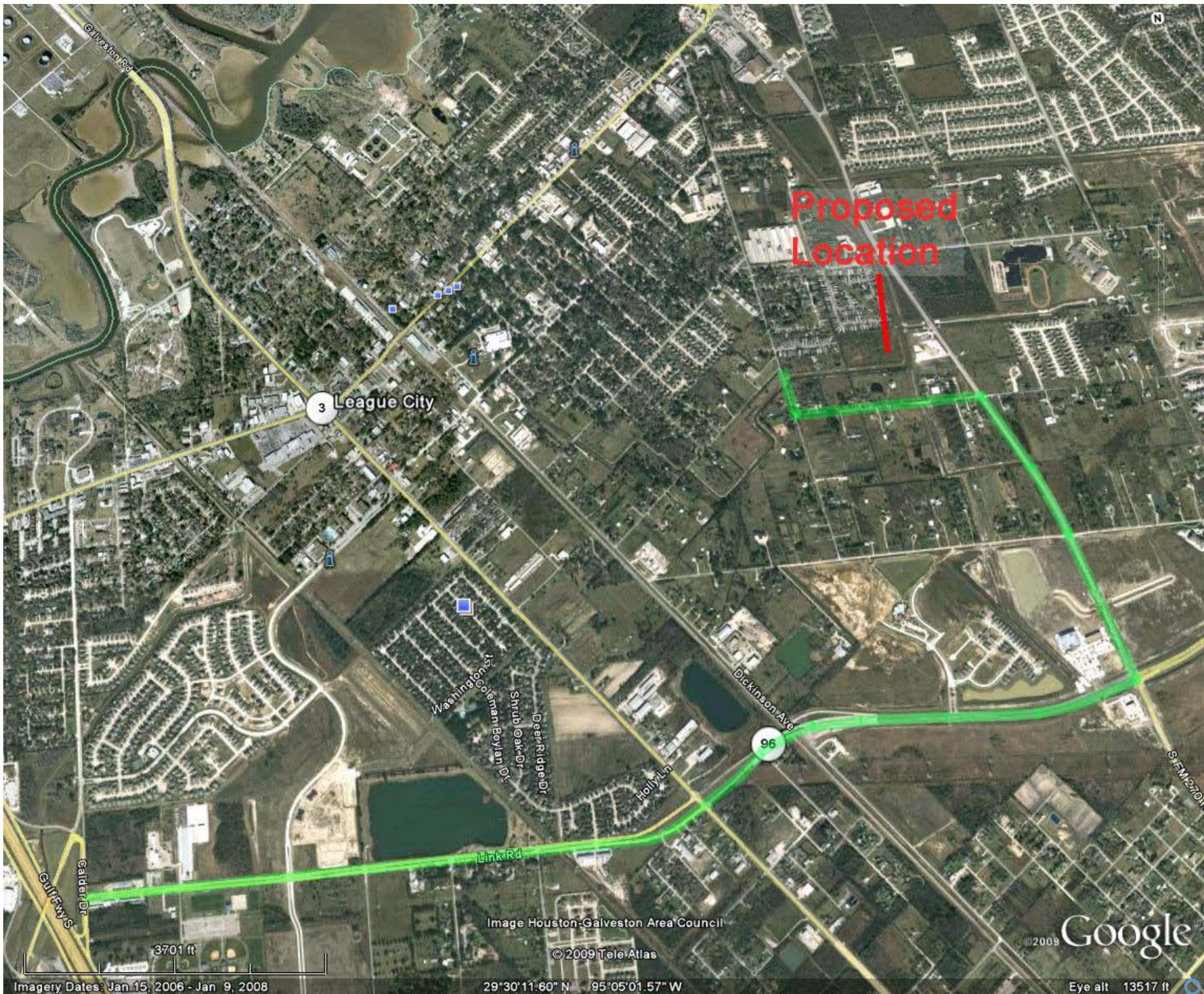


## **Traffic Routing And Management Plan**

In an effort to minimize the impacts of proposed project on League City residents, we are proposing an alternate route to provide access to the site. The proposed route would exit Interstate 45 at Highway 96. This interchange is currently under construction, but work should be completed within the next two months, and before the initiation of the proposed project.

Upon exiting Interstate 45, trucks would travel east on Highway 96 for approximately 2.61 miles to the intersection of Highway 96 and FM 270. From this intersection, the route proceeds north on FM 270 for 0.78 mile, before heading east on Austin Street for 0.47 mile and then north on Texas Avenue for 0.12 mile to the site entrance. We could also utilize Hewitt Street from FM 270 to reach Texas Avenue, but Austin Street will minimize the use of residential surface streets.

Additionally, truck traffic accessing the site will be restricted from 7 A.M. to 9:30 A.M. and from 3:30 P.M. to 6:30 P.M. to prevent additional vehicles on the roads around League City during high traffic periods of the day. No truck traffic will be permitted to access the site from FM 518 regardless of the time of day. Truck traffic associated with moving equipment onto the site at the beginning of operations and off of the site at the completion of operations will occur over three days and will be staggered to prevent traffic back ups associated with activities related to this site. By utilizing an alternate route, restricting travel times during high traffic periods, and staggering traffic during setup and removal of equipment we feel the traffic impacts associated with this project will be minimal.



Proposed Location

3 League City

96

Image Houston-Galveston Area Council

© 2009 Tele Atlas

© 2009 Google

Imagery Dates: Jan 15, 2006 - Jan 9, 2008

29°30'11.60" N 95°05'01.57" W

Eye alt 13517 ft

