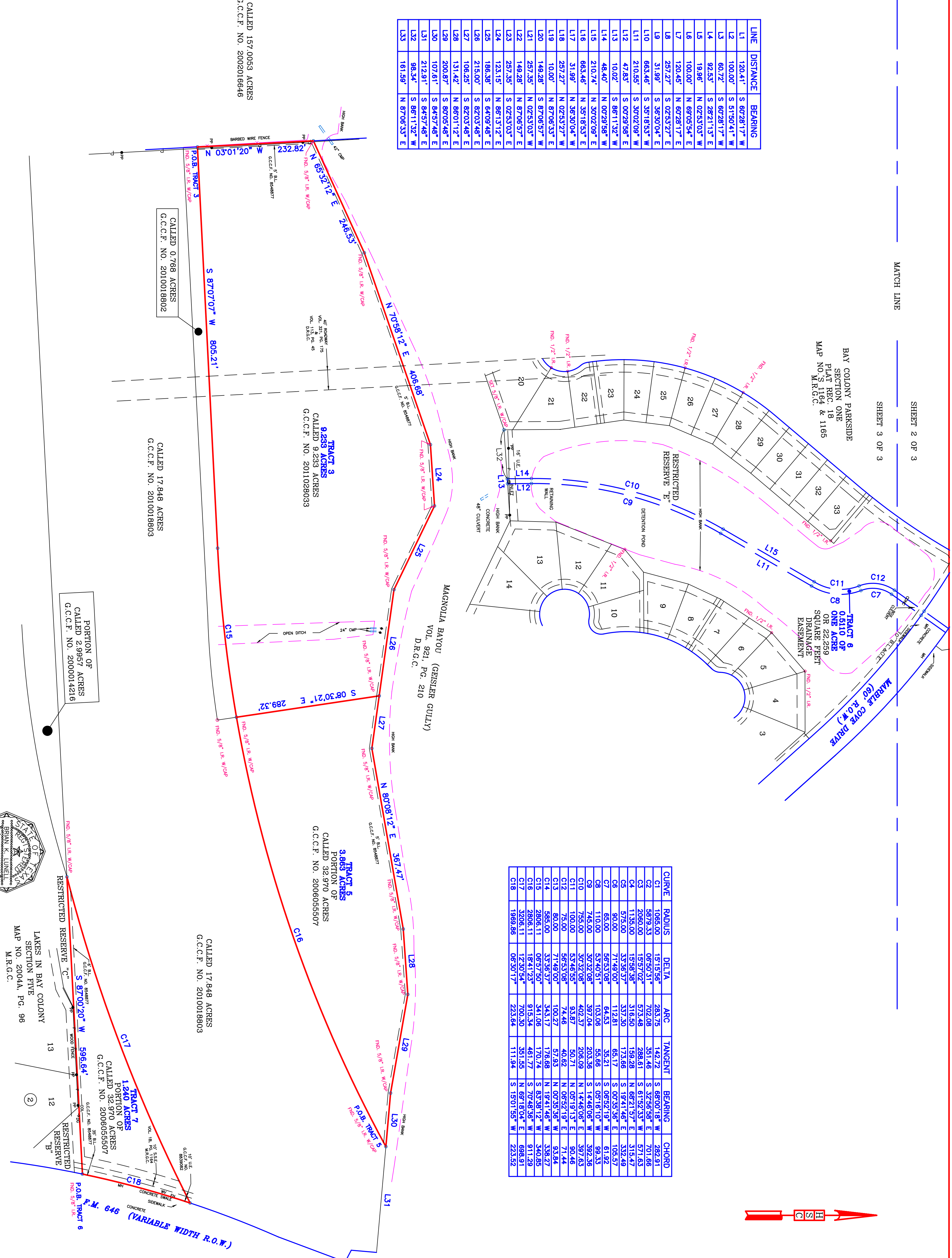


NOTES:

- This survey was performed in connection with the proposed subdivision of the land shown on the plat. The survey was performed on June 10, 2012.
- Bearing orientation based on Texas State Plane 4204). Derived from CORS site TXLM.
- Surveyor did not abstract tract.
- () indicates deed or plat call.
- Subject to Restrictive Covenants as set out in G.C.C.F. No. 8548877 (Tracts 3 and 5) and Plat Record 2008A, Map No. 5 2 and 3 (Tract 5).
- Based on graphical plotting no portion of this tract lies within a "100 year flood hazard area" as designated on the National Flood Insurance Program - Flood Insurance Rate Study (FIRM) for the City of League City, Texas dated September 22, 1999, however the tract may be affected by the 100 year flood hazard area as determined by the 100 year flood hazard area as established by F.E.M.A. The "100 year flood hazard area" is subject to change as detailed studies become available and/or additional or changing conditions change.
- Subject to that particular Affidavit pertaining to a surface application on-site wastewater treatment system (G.C.C.F. No. 205092530) (Tract 5).
- Subject to that particular Affidavit pertaining to a surface application on-site wastewater treatment system (G.C.C.F. No. 205092530) (Tract 5).
- Subject to Terms, conditions and stipulations of that certain Plat Front's Interest Agreement, by and between Seronik, Inc. and Plaintiff, et al., dated and recorded July 11, 2007 (G.C.C.F. No. 2007053249) (Tract 5).
- Subject to Terms, conditions and stipulations of that certain Permanent Easement and Detention Easement (G.C.C.F. No. 2008045501) (Tracts 1, 2, 4 and 6).
- An Easement for drainage purposes extending a distance of 15' on each side of the center-line of all natural drainage courses (Plat Record 2008A, Map No. 5 2 and 3) (Tract 6).
- Subject to Terms, conditions and stipulations of that certain Permanent Drainage and Detention Easement (G.C.C.F. No. 2008045501) (Tracts 1 and 2).
- Subject to Terms, conditions and stipulations of that certain Access Easement Agreement, by and between Seronik Realty Partners, L.P. and S-55 H-45 and Seronik, Inc. 9/6, L.P. (G.C.C.F. No. 2008055504) (Tracts 1 and 2).
- Subject to unlocated pipeline right-of-way easement in and around the property of Plaintiff, et al., dated and recorded July 11, 2007 (G.C.C.F. No. 2007053249) (Tracts 1, 2 and 4).
- Subject to unlocated pipeline right-of-way easement in and around the property of Plaintiff, et al., dated and recorded July 11, 2007 (G.C.C.F. No. 2007053249) (Tracts 1, 2 and 4).
- Subject to unlocated pipeline right-of-way easement in and around the property of Plaintiff, et al., dated and recorded July 11, 2007 (G.C.C.F. No. 2007053249) (Tracts 1, 2 and 4).
- Subject to Terms, conditions and stipulations of that certain Plat Front's Interest Agreement, by and between Seronik Realty Partners, L.P. and S-55 H-45 and Seronik, Inc. 9/6, L.P. (G.C.C.F. No. 2008055504) (Tracts 1 and 2).
- Tracts being more particularly described by separate affidavits of Plaintiff, et al., dated and recorded July 11, 2007 (G.C.C.F. No. 2007053249), July 12, 2007 (G.C.C.F. No. 2007053249), July 13, 2007 (G.C.C.F. No. 2007053249), July 14, 2007 (G.C.C.F. No. 2007053249), July 15, 2007 (G.C.C.F. No. 2007053249), July 16, 2007 (G.C.C.F. No. 2007053249), July 17, 2007 (G.C.C.F. No. 2007053249), July 18, 2007 (G.C.C.F. No. 2007053249), July 19, 2007 (G.C.C.F. No. 2007053249), July 20, 2007 (G.C.C.F. No. 2007053249), July 21, 2007 (G.C.C.F. No. 2007053249), July 22, 2007 (G.C.C.F. No. 2007053249), July 23, 2007 (G.C.C.F. No. 2007053249), July 24, 2007 (G.C.C.F. No. 2007053249), July 25, 2007 (G.C.C.F. No. 2007053249), July 26, 2007 (G.C.C.F. No. 2007053249), July 27, 2007 (G.C.C.F. No. 2007053249), July 28, 2007 (G.C.C.F. No. 2007053249), July 29, 2007 (G.C.C.F. No. 2007053249), July 30, 2007 (G.C.C.F. No. 2007053249), July 31, 2007 (G.C.C.F. No. 2007053249), July 32, 2007 (G.C.C.F. No. 2007053249), July 33, 2007 (G.C.C.F. No. 2007053249).

LINE	DISTANCE	BEARING
L1	120.41'	S 60°28'17" W
L2	100.00'	S 51°50'41" W
L3	60.72'	S 60°28'17" W
L4	92.53'	S 29°21'13" E
L5	19.98'	S 02°53'03" W
L6	100.00'	N 89°05'54" E
L7	120.45'	N 60°28'17" E
L8	251.27'	S 02°53'27" E
L9	31.98'	S 36°30'04" E
L10	665.46'	S 35°18'53" W
L11	210.55'	S 30°02'09" E
L12	47.83'	S 07°29'58" E
L13	100.22'	S 88°11'32" W
L14	48.40'	N 00°29'58" W
L15	210.74'	N 30°02'09" E
L16	665.46'	N 35°18'53" E
L17	31.98'	N 36°30'04" W
L18	251.27'	N 02°53'27" W
L19	100.00'	N 87°06'13" E
L20	148.28'	S 87°06'57" W
L21	251.25'	N 02°53'03" W
L22	148.28'	S 87°06'57" E
L23	251.25'	S 02°53'03" E
L24	123.15'	N 86°13'12" E
L25	188.38'	S 84°09'48" E
L26	215.00'	S 82°03'48" E
L27	108.25'	S 82°03'48" E
L28	131.42'	N 88°01'12" E
L29	200.87'	S 80°05'48" E
L30	107.61'	S 84°57'48" E
L31	212.81'	S 84°57'48" E
L32	98.34'	S 86°11'32" W
L33	181.59'	N 87°06'13" E

CURVE	RADIUS	DELTA	ARC	TANGENT	BEARING	CHORD
C1	1065.00	15°15'56"	283.75	142.72	S 86°00'18" W	282.81
C2	5879.33	0°50'31"	702.08	351.48	S 32°56'58" E	701.68
C3	2060.00	15°57'02"	573.48	288.61	S 61°52'33" W	571.63
C4	1135.00	15°58'38"	316.50	159.28	N 68°21'57" E	315.47
C5	575.00	33°38'37"	337.30	173.86	S 33°38'37" E	332.48
C6	910.00	71°48'07"	172.81	65.17	S 00°35'36" E	105.57
C7	1100.00	53°20'58"	103.08	52.48	S 05°16'10" W	80.73
C8	745.00	30°32'08"	397.04	203.36	S 14°48'06" E	397.63
C9	100.00	53°46'55"	402.37	206.09	N 05°19'13" E	90.46
C10	100.00	53°46'55"	93.87	50.71	N 05°19'13" E	90.46
C11	75.00	58°53'08"	74.48	40.82	N 08°52'19" E	71.44
C12	80.00	71°48'07"	100.27	57.83	N 00°35'36" W	338.27
C13	2865.00	33°38'37"	343.17	176.88	N 19°41'46" W	338.27
C14	2806.11	08°57'50"	341.06	170.74	S 83°38'12" W	340.85
C15	3208.11	18°41'23"	915.34	481.77	S 70°48'36" W	911.29
C16	3208.11	17°30'54"	708.50	351.95	N 69°18'04" E	698.91
C17	1989.88	08°50'17"	223.54	111.94	S 19°01'50" W	223.52



I hereby certify that this survey was made on the ground, that this plat correctly represents the same, and that the same conforms to the current Texas Society of Professional Surveyors Standards and Specifications for a Category 1A Condition Survey.

Registered Professional Land Surveyor

HOVIS SURVEYING COMPANY
Land Surveys - Computer Mapping
5000 Calhoun - Spring, Texas 77379
(881) 380-9881
Acres - Residential - Industrial - Commercial

LAND TITLE SURVEY OF 18847 ACRES (TRACT 1), 68407 ACRES (TRACT 2), 63110 ACRES (TRACT 3), 1400 ACRES (TRACT 4), 1400 ACRES (TRACT 5), 1400 ACRES (TRACT 6), 1400 ACRES (TRACT 7), 1400 ACRES (TRACT 8), 1400 ACRES (TRACT 9), 1400 ACRES (TRACT 10), 1400 ACRES (TRACT 11), 1400 ACRES (TRACT 12), 1400 ACRES (TRACT 13), 1400 ACRES (TRACT 14), 1400 ACRES (TRACT 15), 1400 ACRES (TRACT 16), 1400 ACRES (TRACT 17), 1400 ACRES (TRACT 18), 1400 ACRES (TRACT 19), 1400 ACRES (TRACT 20), 1400 ACRES (TRACT 21), 1400 ACRES (TRACT 22), 1400 ACRES (TRACT 23), 1400 ACRES (TRACT 24), 1400 ACRES (TRACT 25), 1400 ACRES (TRACT 26), 1400 ACRES (TRACT 27), 1400 ACRES (TRACT 28), 1400 ACRES (TRACT 29), 1400 ACRES (TRACT 30), 1400 ACRES (TRACT 31), 1400 ACRES (TRACT 32), 1400 ACRES (TRACT 33), 1400 ACRES (TRACT 34), 1400 ACRES (TRACT 35), 1400 ACRES (TRACT 36), 1400 ACRES (TRACT 37), 1400 ACRES (TRACT 38), 1400 ACRES (TRACT 39), 1400 ACRES (TRACT 40), 1400 ACRES (TRACT 41), 1400 ACRES (TRACT 42), 1400 ACRES (TRACT 43), 1400 ACRES (TRACT 44), 1400 ACRES (TRACT 45), 1400 ACRES (TRACT 46), 1400 ACRES (TRACT 47), 1400 ACRES (TRACT 48), 1400 ACRES (TRACT 49), 1400 ACRES (TRACT 50), 1400 ACRES (TRACT 51), 1400 ACRES (TRACT 52), 1400 ACRES (TRACT 53), 1400 ACRES (TRACT 54), 1400 ACRES (TRACT 55), 1400 ACRES (TRACT 56), 1400 ACRES (TRACT 57), 1400 ACRES (TRACT 58), 1400 ACRES (TRACT 59), 1400 ACRES (TRACT 60), 1400 ACRES (TRACT 61), 1400 ACRES (TRACT 62), 1400 ACRES (TRACT 63), 1400 ACRES (TRACT 64), 1400 ACRES (TRACT 65), 1400 ACRES (TRACT 66), 1400 ACRES (TRACT 67), 1400 ACRES (TRACT 68), 1400 ACRES (TRACT 69), 1400 ACRES (TRACT 70), 1400 ACRES (TRACT 71), 1400 ACRES (TRACT 72), 1400 ACRES (TRACT 73), 1400 ACRES (TRACT 74), 1400 ACRES (TRACT 75), 1400 ACRES (TRACT 76), 1400 ACRES (TRACT 77), 1400 ACRES (TRACT 78), 1400 ACRES (TRACT 79), 1400 ACRES (TRACT 80), 1400 ACRES (TRACT 81), 1400 ACRES (TRACT 82), 1400 ACRES (TRACT 83), 1400 ACRES (TRACT 84), 1400 ACRES (TRACT 85), 1400 ACRES (TRACT 86), 1400 ACRES (TRACT 87), 1400 ACRES (TRACT 88), 1400 ACRES (TRACT 89), 1400 ACRES (TRACT 90), 1400 ACRES (TRACT 91), 1400 ACRES (TRACT 92), 1400 ACRES (TRACT 93), 1400 ACRES (TRACT 94), 1400 ACRES (TRACT 95), 1400 ACRES (TRACT 96), 1400 ACRES (TRACT 97), 1400 ACRES (TRACT 98), 1400 ACRES (TRACT 99), 1400 ACRES (TRACT 100).

