

Exhibit D

MASONRY SPECIFICATION

CMU CONCRETE BLOCK

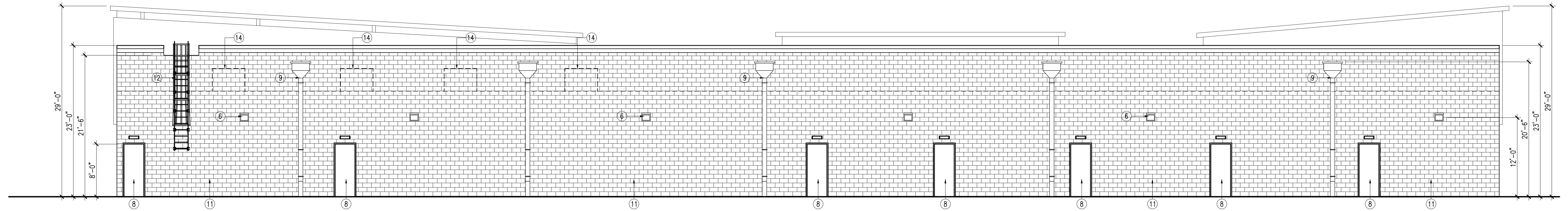
BRAND : HEADWATERS
 SIZE AND SHAPES : 8 x 8 x 16 SPLIT FACE CMU, SAME SIZE SPLIT FACE COLOR BAND, ALL CORNERS SHALL USE SPLIT FACE CORNER BLOCK, ALL MORTAR GAP WITH LADDER TYPE 2 WIRE SYSTEM (SERIES 200).
 COLOR : SOUTH TEXAS STANDARD COLORS, EXACT COLOR SELECTED BY OWNER.
 MORTAR : KRETECONTROL 250, COLOR SELECTED BY OWNER.
 SEALER : SURE KLEAN 600

STONE VENEER

BRAND : ELDORADO STONE
 SIZE AND SHAPES : RUSTIC LEDGE (WESTERN REGIONAL STONE VENEER)
 COLOR : SELECTED BY OWNER.
 MORTAR : MVIS POINTING MORTAR AND MVIS VENEER MORTAR
 COLOR SELECTED BY OWNER.

STUCCO

BRAND : DRYVIT - COMMERCIAL CEMENT PLASTER
 MODEL : DS-820
 COLOR : SELECTED BY OWNER.

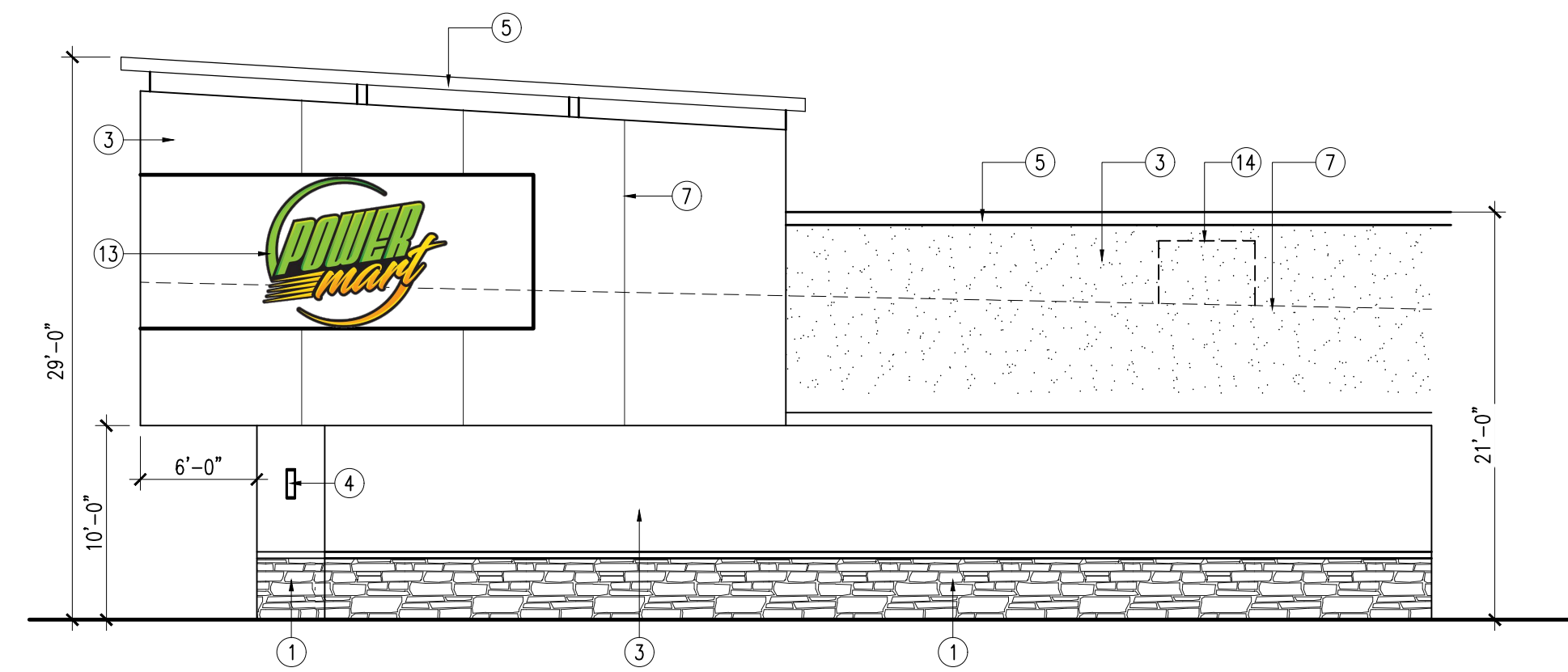


KEY NOTES :

1. CULTURED STONE VENEER WALL FINISHED, COLOR AND PATTERN TO BE SELECTED BY OWNER
2. ALUMINUM GLASS STOREFRONT, SEE WINDOW SCHEDULE.
3. TRADITIONAL 3 PART CONCRETE STUCCO INSTALL TO STUD WALL PER MANUFACTURER'S STANDARD DETAIL, "DRYVIT" SYSTEM , PAINTED. COLOR SELECTED BY OWNER.
4. DECORATIVE LIGHT FIXTURES, SELECTED BY OWNER.
5. STUCCO TRIM/MOULDING, SEE PROFILE ON WALL SECTIONS.
6. WALL PACK FIXTURES AT 12'-0" A.F.F., SEE ELECTRICAL PLAN.
7. TYPICAL RECESS JOINT FOR STUCCO PER MANUFACTURE STANDARD.
8. PAINTED 3'-0" x 7'-0" HOLLOW METAL DOOR, SEE DOOR SCHEDULE, COLOR SELECTED BY OWNER.
9. 26 GA 5" x 5" BOX DOWNSPOUT WITH 3 FASTENING STRAPS, PAINT TO MATCH EXTERIOR WALL, COLOR SELECTED BY OWNER.
10. TYPICAL BUILT-UP ROOF OVER R-30 RIGID ISOCYANURATE INSULATION ON GALVANIZE STEEL ROOF DECK. SEE ROOF PLAN.
11. 8" x 16" SPLIT-FACED CONCRETE MASONRY UNIT BLOCK, COLOR SELECTED BY OWNER.
12. ROOF ACCESS LADDER, SEE DETAIL ON 05/A1.03.
13. BUSINESS SIGN, BY OWNER.
14. MECHANICAL EQUIPMENT SCREENED FROM VIEW ON ALL SIDES BY OPAQUE PARAPET WALL

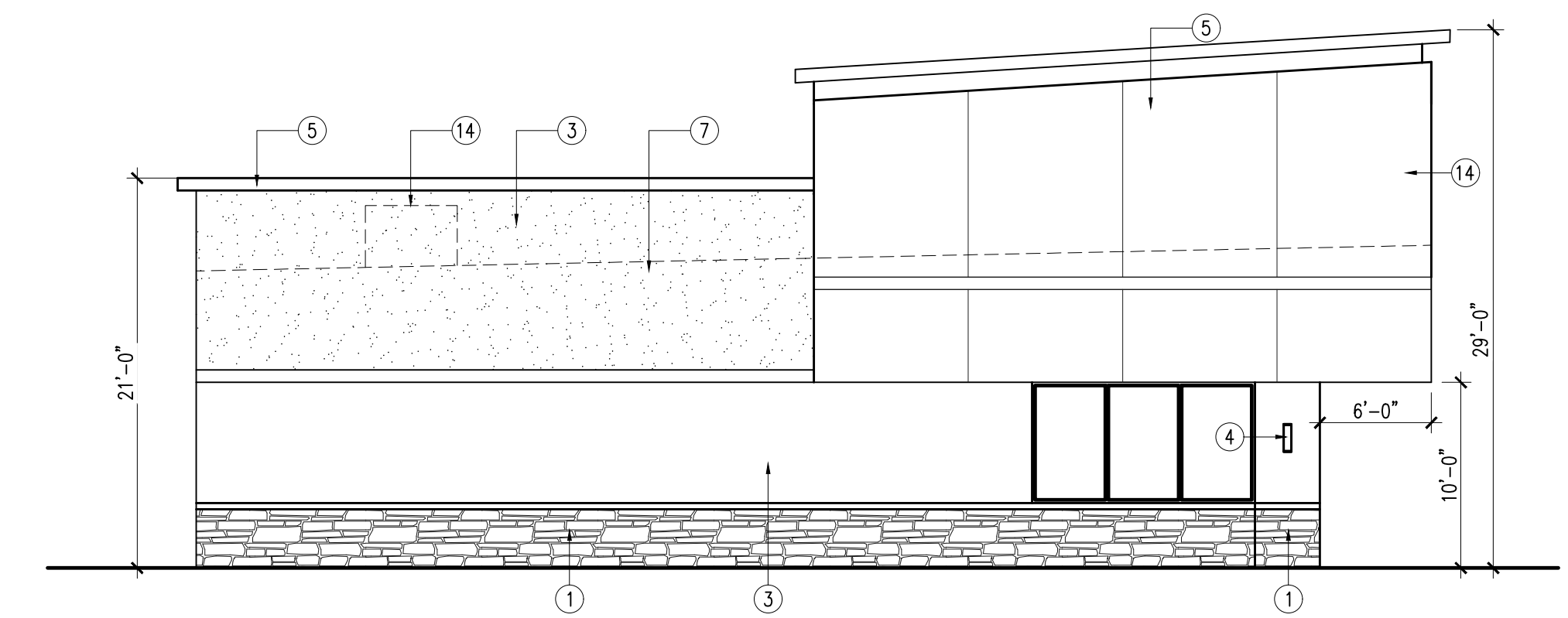
04 SOUTH ELEVATION
 SCALE : 1/8" = 1'-0"

SOUTH ELEVATION TOTAL S.F.: 4830 S.F.		
BLDG. MATERIAL:	TOTAL S.F.:	PERCENT:
CONCRETE	4641 S.F.	96%
MASONRY	189 S.F.	4%



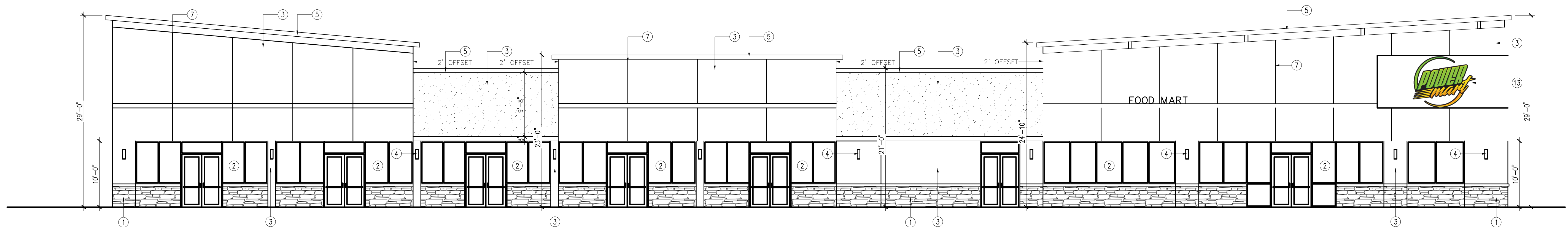
03 WEST ELEVATION (RIGHT)
 SCALE : 1/8" = 1'-0"

WEST ELEVATION TOTAL S.F.: 1568 S.F.		
BLDG. MATERIAL:	TOTAL S.F.:	PERCENT:
STONE VENEER	212 S.F.	14%
STUCCO	1348 S.F.	86%



02 EAST ELEVATION (LEFT)
 SCALE : 1/8" = 1'-0"

EAST ELEVATION TOTAL S.F.: 1568 S.F.		
BLDG. MATERIAL:	TOTAL S.F.:	PERCENT:
STONE VENEER	212 S.F.	14%
STUCCO	1270 S.F.	81%
GLASS	78 S.F.	5%



01 NORTH ELEVATION
 SCALE : 1/8" = 1'-0"

NORTH ELEVATION TOTAL S.F.: 5206 S.F.		
BLDG. MATERIAL:	TOTAL S.F.:	PERCENT:
STONE VENEER	543 S.F.	10%
STUCCO	3644 S.F.	70%
GLASS	1041 S.F.	20%