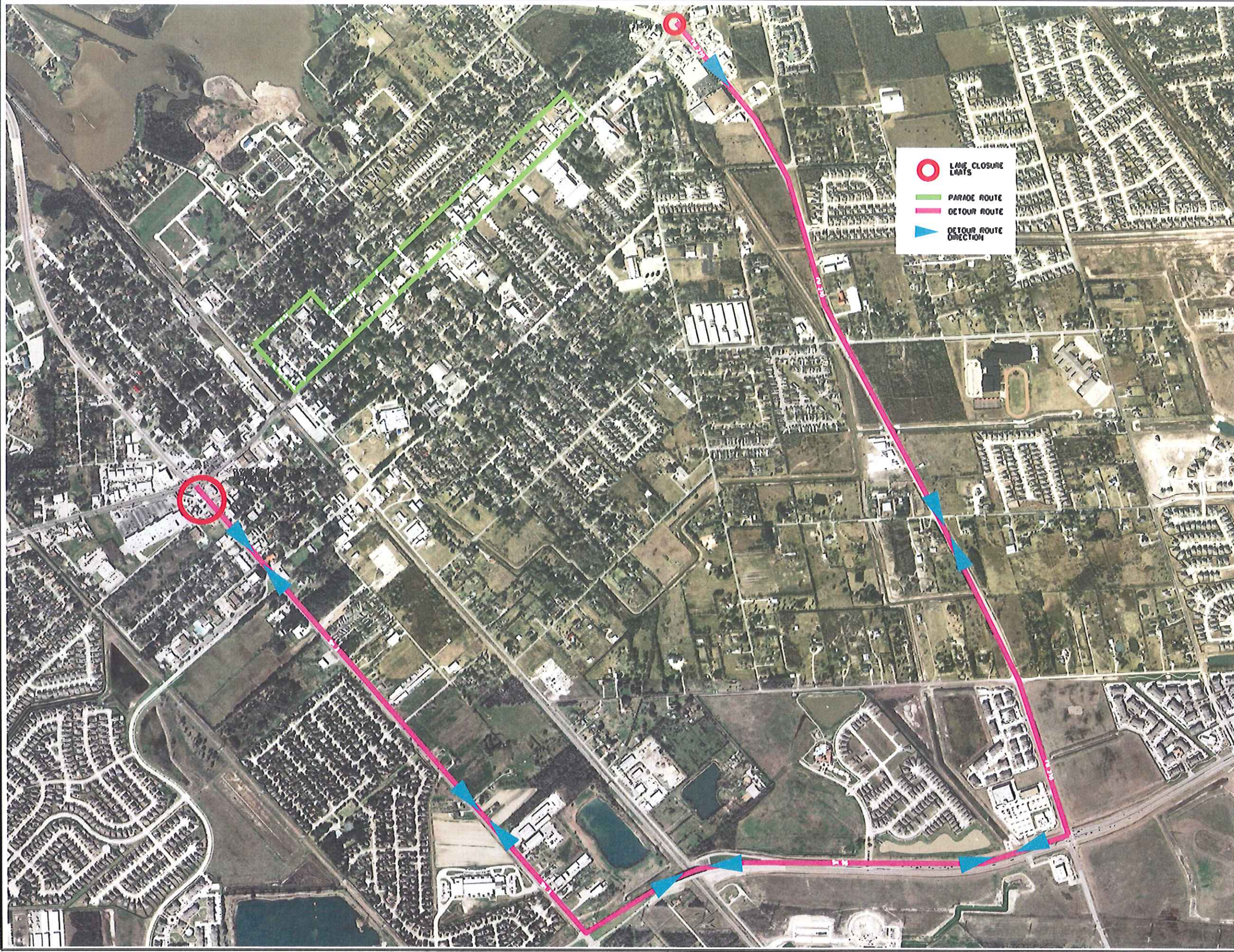




SDATES  
STINGE  
ISSUES/SPECIFICATION/ISSUES



PARADE  
SPECIAL EVENT



*Holiday In The Park  
A Tribute to Santa's Elves &  
Workshop at the North Pole*

LANE CLOSURE LIMITS  
 PARADE ROUTE  
 DETOUR ROUTE  
 DETOUR ROUTE DIRECTION



DATE	REVISION	BY

HOLIDAY IN THE PARK  
PARADE AND FESTIVAL



*RLW*  
*7/23/13*

PROJECT NO.	
DRAWN: M.M.B.	Checked: RLW
SCALE:	DATE: 2013
SHEET:	OF: XX



PARADE  
SPECIAL EVENT



-  LANE CLOSURE LIMITS
-  PARADE ROUTE



DATE	REVISION	BY

HOLIDAY IN THE PARK  
PARADE AND FESTIVAL



*RLW*  
7-3-13

PROJECT NO.	
DRAWN: M.M.B.	Checked: RLW
SCALE:	DATE: 2013
SHEET:	OF: XX

DATE: 7/3/13  
TIME: 10:00 AM  
SHEET: 1 OF 1



PARADE  
SPECIAL EVENT



Holiday In The Park  
A Tribute to Santa's Elves &  
Workshop at the North Pole

LEGEND

← DIRECTION OF TRAFFIC FLOW

■ Channelizing devices  
One-Piece cones

▨ Type 3 Barricade

⏏ Trailer Mounted  
Flashing Arrow Board

⏏ Flashing Arrow Board  
in Coultion Mode

⏏ Sign



DATE	REVISION	BY

HOLIDAY IN THE PARK  
PARADE AND FESTIVAL



PROJECT NO.	
DRAWN: M.M.B.	Checked: RLW
SCALE:	DATE: 2013
SHEET: 0	OF: XX

ROADS  
TIMES  
SPECIFICATIONS

MATCH LINE "0"

MATCH LINE "0"

PARADE  
SPECIAL EVENT



**LEGEND**

- ← DIRECTION OF TRAFFIC FLOW
- Channelizing devices  
One-Piece cones
- ▨ Type 3 Barricade
- 🚚 Trailer Mounted  
Flashing Arrow Board
- 🚚 Flashing Arrow Board  
in Coultion Mode
- 🚧 Sign



DATE	REVISION	BY

HOLIDAY IN THE PARK  
PARADE AND FESTIVAL



PROJECT NO.	Checked: RLW
DRAWN: M.M.B.	DATE: 2013
SCALE:	OF: XX
SHEET: 1	

DATE: 11/13/13  
TIME: 11:00 AM  
SPECIFICATION: 11111

MATCH LINE "1"

MATCH LINE "1"

PARADE  
SPECIAL EVENT



Holiday In The Park  
A Tribute to Santa's Elves &  
Workshop at the North Pole

**LEGEND**

- ← DIRECTION OF TRAFFIC FLOW
- Channelizing devices  
One-Piece cones
- ▨ Type 3 Barricade
- 🚚 Trailer Mounted  
Flashing Arrow Board
- 🚚 Flashing Arrow Board  
in Coultion Mode
- 📍 Sign



DATE	REVISION	BY

HOLIDAY IN THE PARK  
PARADE AND FESTIVAL



PROJECT NO. \_\_\_\_\_  
 DRAWN: M.M.B. Checked: RLW  
 SCALE: \_\_\_\_\_ DATE: 2013  
 SHEET: 2 OF: XX

DATE: 11/15/13  
TIME: 11:58 AM  
SECTION: SPECIFICATIONS

MATCH LINE "2"

MATCH LINE "2"

PARADE  
SPECIAL EVENT



LEGEND

← DIRECTION OF TRAFFIC FLOW

■ Channelizing devices  
One-Piece cones

▨ Type 3 Barricade

Trailer Mounted  
Flashing Arrow Board

Flashing Arrow Board  
in Caution Mode

Sign



MATCH LINE "3"



DATE	REVISION	BY

HOLIDAY IN THE PARK  
PARADE AND FESTIVAL



PROJECT NO.	
DRAWN: M.M.B.	Checked: RLW
SCALE:	DATE: 2013
SHEET: 3	OF: XX

DATE: 11/1/13  
DRAWN: M.M.B.  
CHECKED: RLW  
SCALE: AS SHOWN  
SHEET: 3 OF 11





MATCH LINE "4"

PARADE  
SPECIAL EVENT



LEGEND

← DIRECTION OF TRAFFIC FLOW

■ Channelizing devices

■ One-Piece cones

▨ Type 3 Barricade

Trailer Mounted  
Flashing Arrow Board

Flashing Arrow Board  
in Caution Mode

Sign



DATE	REVISION	BY

HOLIDAY IN THE PARK  
PARADE AND FESTIVAL



PROJECT NO.	
DRAWN: M.M.B.	Checked: RLW
SCALE:	DATE: 2013
SHEET: 5	OF: XX

DATE: 07-3-13  
TIME: 11:55 AM  
SESSION: SPECIFICATIONS

MATCH LINE "5"

MATCH LINE "5"

PARADE  
SPECIAL EVENT



Holiday In The Park  
A Tribute to Santa's Elves &  
Workshop at the North Pole

LEGEND

← DIRECTION OF TRAFFIC FLOW

■ Channelizing devices  
One-Piece cones

▨ Type 3 Barricade

Trailer Mounted  
Flashing Arrow Board

Flashing Arrow Board  
in Coultion Mode

Sign



MATCH LINE "6"



DATE	REVISION	BY

HOLIDAY IN THE PARK  
PARADE AND FESTIVAL



*RLW*  
12/23/13

PROJECT NO.	Checked: RLW
DRAWN: M.M.B.	DATE: 2013
SCALE:	OF: XX
SHEET: 6	

SDATES  
5 TIMES  
13351800N5PECIFICATION13131

MATCH LINE "6"

LEGEND

← DIRECTION OF TRAFFIC FLOW

■ Channelizing devices  
One-Piece cones

▨ Type 3 Barricade

☑ Trailer Mounted  
Flashing Arrow Board

☑ Flashing Arrow Board  
in Caution Mode

⊕ Sign



PARADE  
SPECIAL EVENT



*Holiday In The Park  
A Tribute to Santa's Elves &  
Workshop at the North Pole*



DATE	REVISION	BY

HOLIDAY IN THE PARK  
PARADE AND FESTIVAL



*RLW*  
*7-3-13*

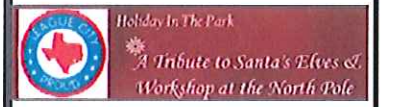
PROJECT NO. \_\_\_\_\_  
 DRAWN: M.M.B.      Checked: RLW  
 SCALE: \_\_\_\_\_      DATE: 2013  
 SHEET: 7      OF: XX

DATE: 7/3/13  
TIME: 11:55 AM  
SPECIFICATIONS: 11111

MATCH LINE "7"

MATCH LINE "7"

PARADE  
SPECIAL EVENT



**LEGEND**

- ← DIRECTION OF TRAFFIC FLOW
- Channelizing devices  
One-Piece cones
- ▨ Type 3 Barricade
- 🚚 Trailer Mounted  
Flashing Arrow Board
- 🚚 Flashing Arrow Board  
in Caution Mode
- 📍 Sign



DATE	REVISION	BY

HOLIDAY IN THE PARK  
PARADE AND FESTIVAL



PROJECT NO. \_\_\_\_\_  
 DRAWN: M.M.B.      Checked: RLW  
 SCALE: \_\_\_\_\_      DATE: 2013  
 SHEET: B              OF: XX

DATE: 11/15/13  
TIME: 10:00 AM  
SPECIFICATIONS: 11/15/13

MATCH LINE "8"

MATCH LINE "8"

PARADE  
SPECIAL EVENT



**LEGEND**

- ← DIRECTION OF TRAFFIC FLOW
- Channelizing devices
- One-Piece cones
- ▨ Type 3 Barricade
- 🚚 Trailer Mounted Flashing Arrow Board
- 🚚 Flashing Arrow Board in Caution Mode
- 📋 Sign



MATCH LINE "9"



DATE	REVISION	BY

HOLIDAY IN THE PARK  
PARADE AND FESTIVAL



PROJECT NO.	
DRAWN: M.M.B.	Checked: RLW
SCALE:	DATE: 2013
SHEET: 9	OF: XX

MATCH LINE "9"

LEGEND

← DIRECTION OF TRAFFIC FLOW

■ Channelizing devices  
One-Piece cones

▨ Type 3 Barricade

☛ Trailer Mounted  
Flashing Arrow Board

☛ Flashing Arrow Board  
in Coultion Mode

⊕ Sign



CITY OF LEAGUE CITY OFFICER



N. Parks Ave.  
Parade Route

FM 518

Parks Ave.

Butler St.

MATCH LINE "10"

PARADE  
SPECIAL EVENT

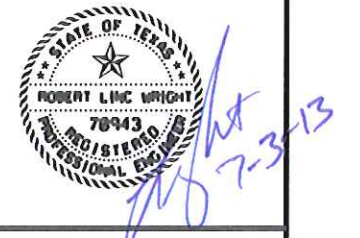


Holiday In The Park  
A Tribute to Santa's Elves &  
Workshop at the North Pole



DATE	REVISION	BY

HOLIDAY IN THE PARK  
PARADE AND FESTIVAL



PROJECT NO.	
DRAWN: M.M.B.	Checked: RLW
SCALE:	DATE: 2013
SHEET: 10	OF: XX

MATCH LINE "10"

LEGEND

← DIRECTION OF TRAFFIC FLOW

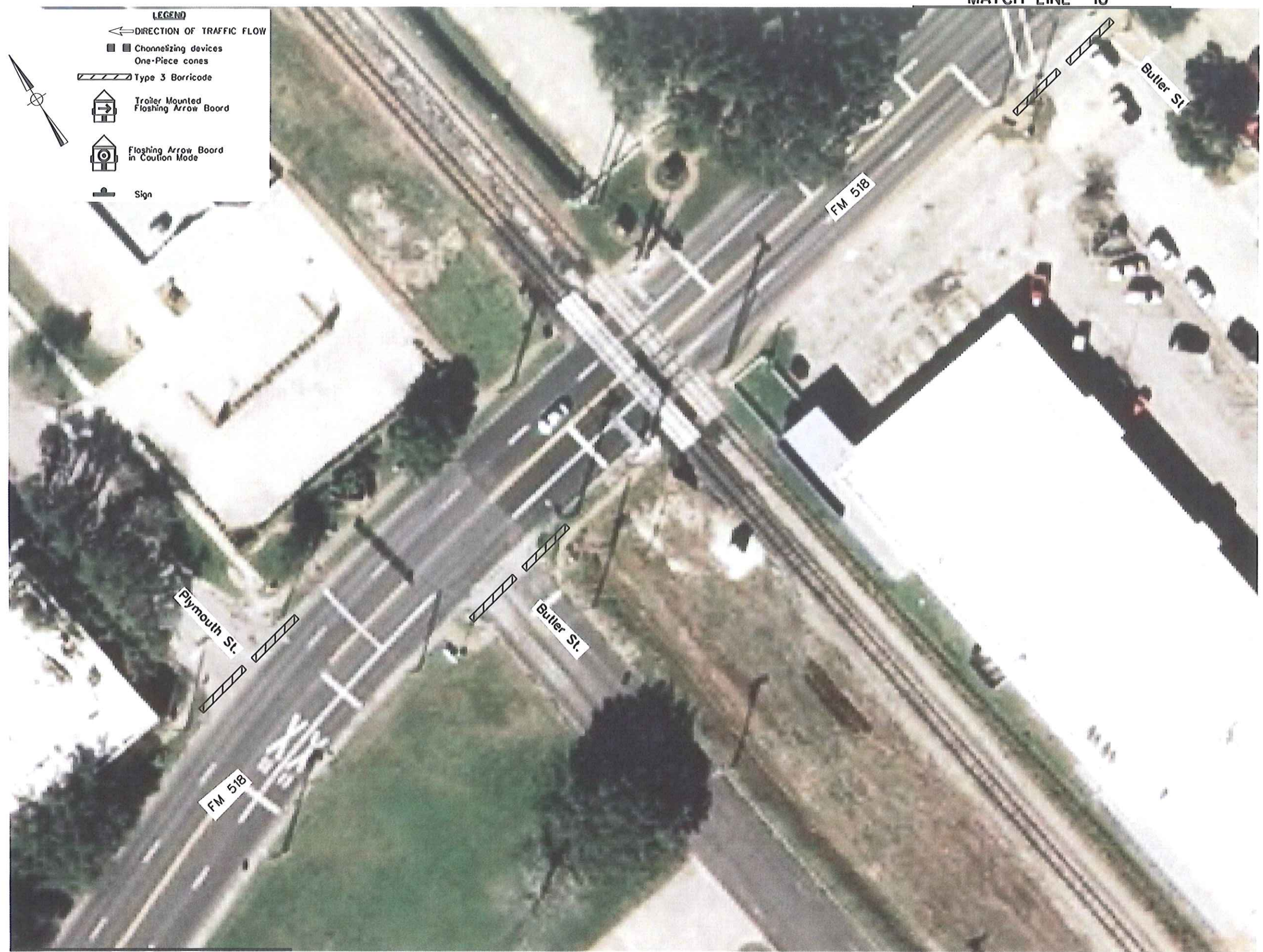
■ Channelizing devices  
One-Piece cones

▨ Type 3 Barricade

⏏ Trailer Mounted  
Flashing Arrow Board

⏏ Flashing Arrow Board  
in Cauton Mode

⊕ Sign



PARADE  
SPECIAL EVENT



Blank area for notes or additional information.



DATE	REVISION	BY

HOLIDAY IN THE PARK  
PARADE AND FESTIVAL



*RLW*  
2013-3-13

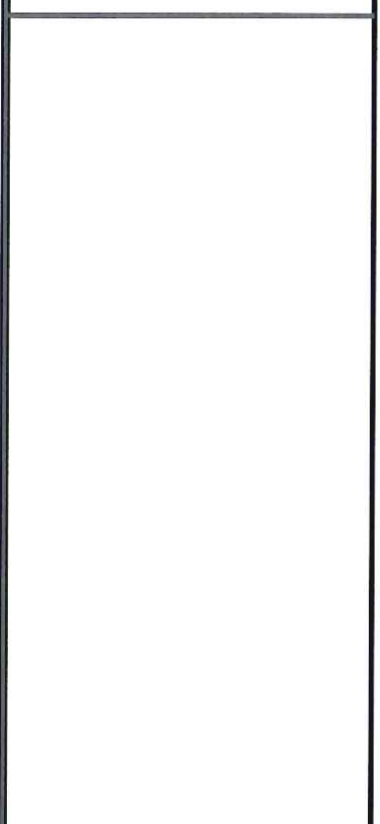
PROJECT NO.	Checked: RLW
DRAWN: M.M.B.	DATE: 2013
SCALE:	OF: XX
SHEET: 11	

DATE: 3/13/13  
TIME: 11:55 AM  
SECTION: SPECIFICATION 111111

MATCH LINE "11"

MATCH LINE "11"

PARADE  
SPECIAL EVENT



DATE	REVISION	BY

HOLIDAY IN THE PARK  
PARADE AND FESTIVAL



*RLW*  
*12-7-13*

PROJECT NO. \_\_\_\_\_  
 DRAWN: M.M.B. Checked: RLW  
 SCALE: \_\_\_\_\_ DATE: 2013  
 SHEET: 12 OF: XX

**LEGEND**

← DIRECTION OF TRAFFIC FLOW

■ Channelizing devices  
One-Piece cones

▨ Type 3 Barricade

🚛 Trailer Mounted  
Flashing Arrow Board

🚚 Flashing Arrow Board  
in Caution Mode

📍 Sign



MATCH LINE "12"

DATE: 12/7/13  
TIME: 11:00 AM  
SPECIFICATIONS: 11/13



MATCH LINE "12"

PARADE  
SPECIAL EVENT



Holiday In The Park  
A Tribute to Santa's Elves &  
Workshop at the North Pole

LEGEND

← DIRECTION OF TRAFFIC FLOW

■ Channelizing devices

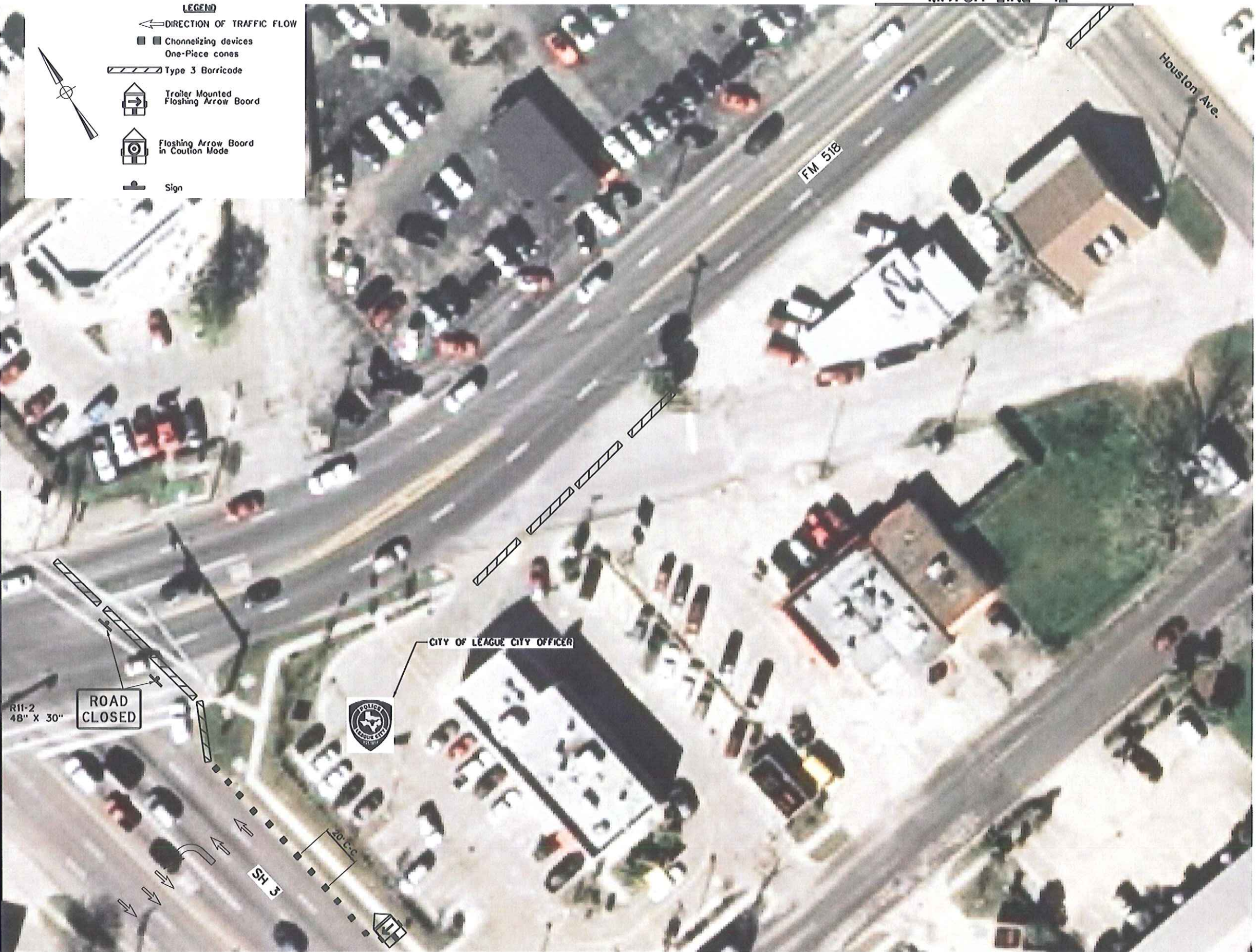
○ One-Piece cones

▨ Type 3 Barricade

Trailer Mounted  
Flashing Arrow Board

Flashing Arrow Board  
in Caution Mode

Sign



MATCH LINE "13"



DATE	REVISION	BY

HOLIDAY IN THE PARK  
PARADE AND FESTIVAL

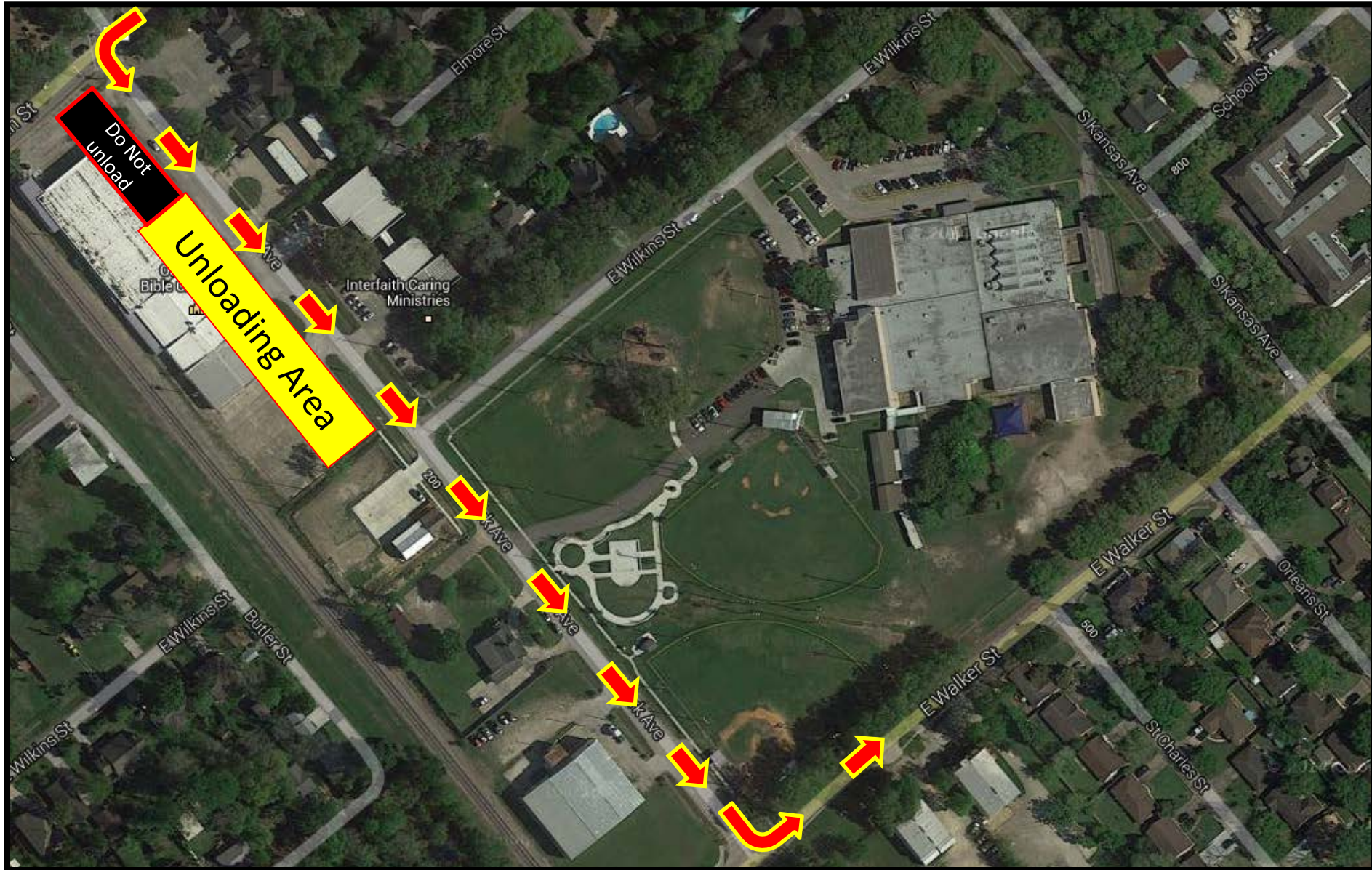


PROJECT NO.	
DRAWN: M.M.B.	Checked: RLW
SCALE:	DATE: 2013
SHEET: 13	OF: XX

DATE: 7-3-13  
TIME: 11:00 AM  
SPECIFICATION: 13131



# End Parade Route



# Route to return to parking area

