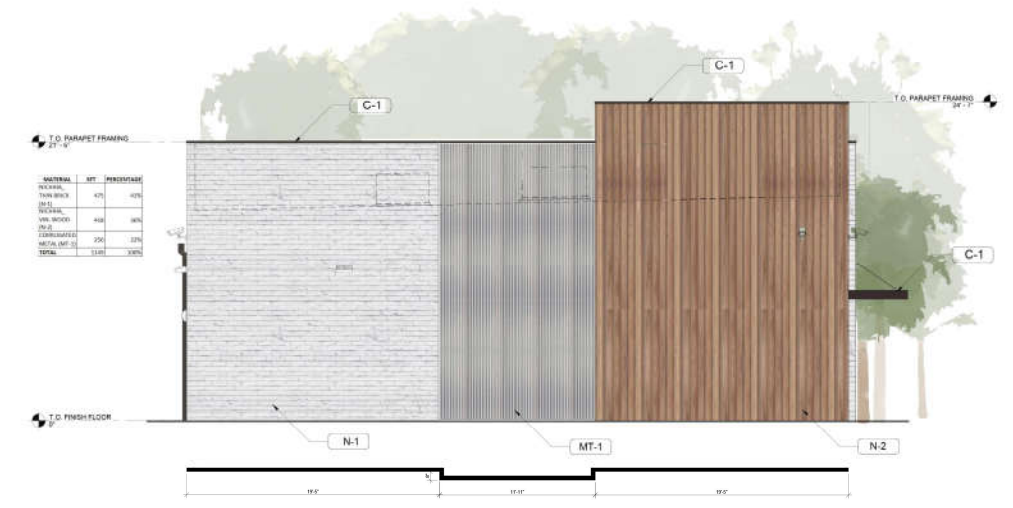
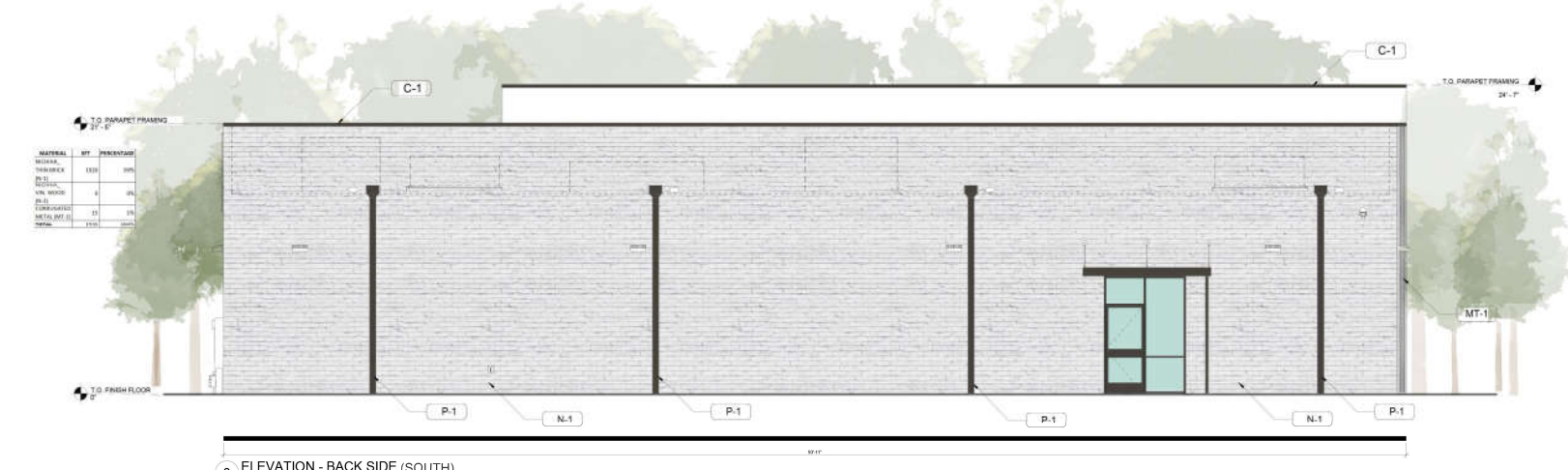




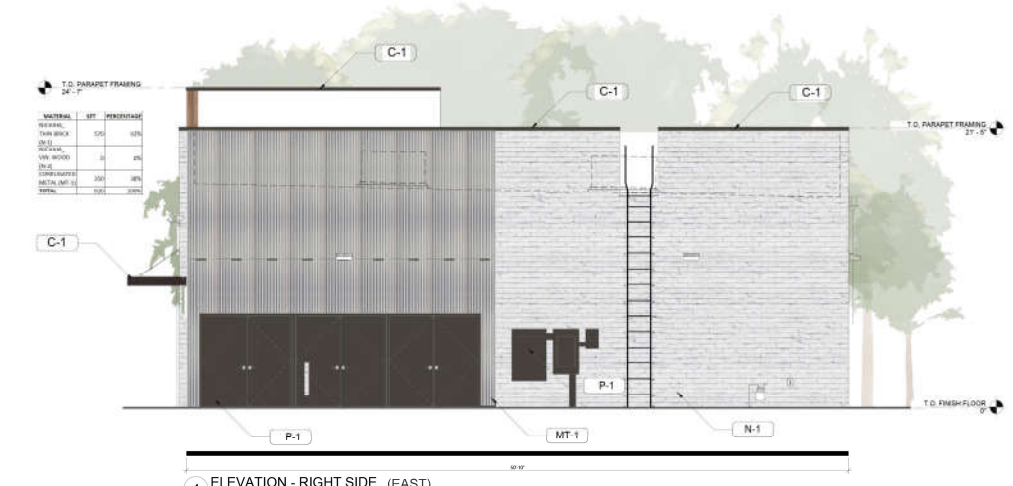
1 ELEVATION - FRONT (NORTH)
1/4" = 1'-0"



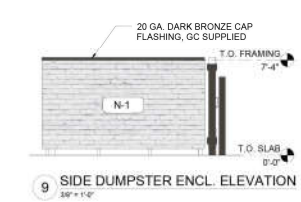
2 ELEVATION - LEFT SIDE (WEST)
1/4" = 1'-0"



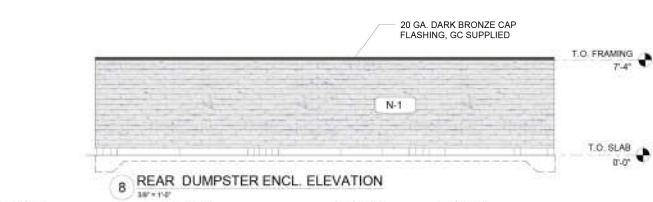
3 ELEVATION - BACK SIDE (SOUTH)
1/4" = 1'-0"



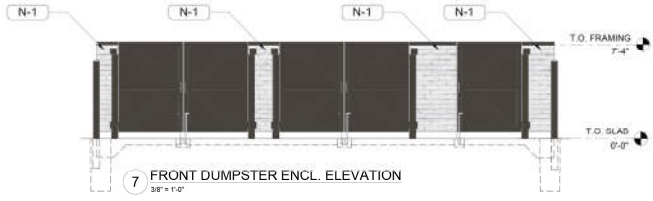
4 ELEVATION - RIGHT SIDE (EAST)
1/4" = 1'-0"



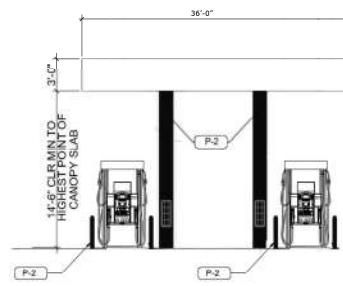
9 SIDE DUMPSTER ENCL. ELEVATION
3/8" = 1'-0"



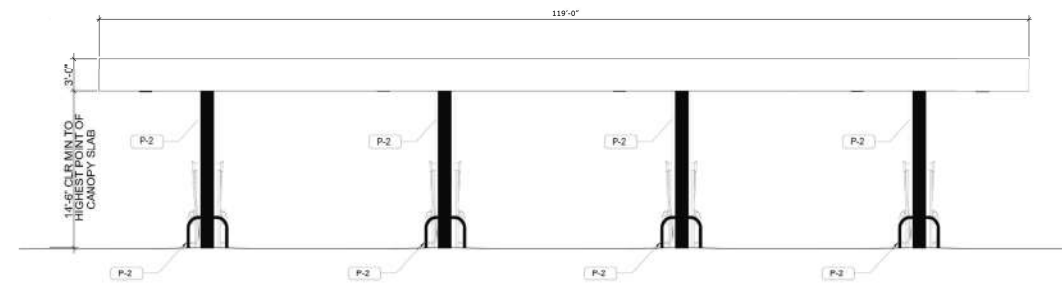
8 REAR DUMPSTER ENCL. ELEVATION
3/8" = 1'-0"



7 FRONT DUMPSTER ENCL. ELEVATION
3/8" = 1'-0"

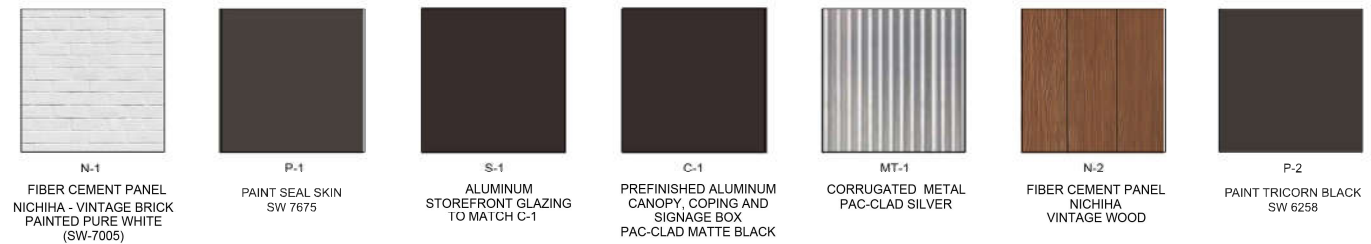


5 GAS CANOPY ELEVATION - SIDE
1/4" = 1'-0"



6 GAS CANOPY ELEVATION - FRONT
1/4" = 1'-0"

MATERIAL SCHEDULE



7-ELEVEN, INC.
3200 Hackberry Rd. Irving, Texas 75063
7-ELEVEN #1046837
FM 518 & WEBBPORT
LEAGUE CITY, TX

Rev. # Date
Proto 08.21.2016

Job#: 200-229
Scale: NTS
Date: 05.21.20
Drawn By: NI
Checked By: AM

Documents prepared by The Dimension Group are to be used for the specific use for which they are intended. Any extension of use to other parties without the express written consent of The Dimension Group is done at the user's own risk. The Dimension Group bears no liability from all claims and lawsuits.

Alexandra Malis
NCAARB, LEED BD+C

NOT FOR REGULATORY APPROVAL PERMITTING OR CONSTRUCTION

SHEET:
PP