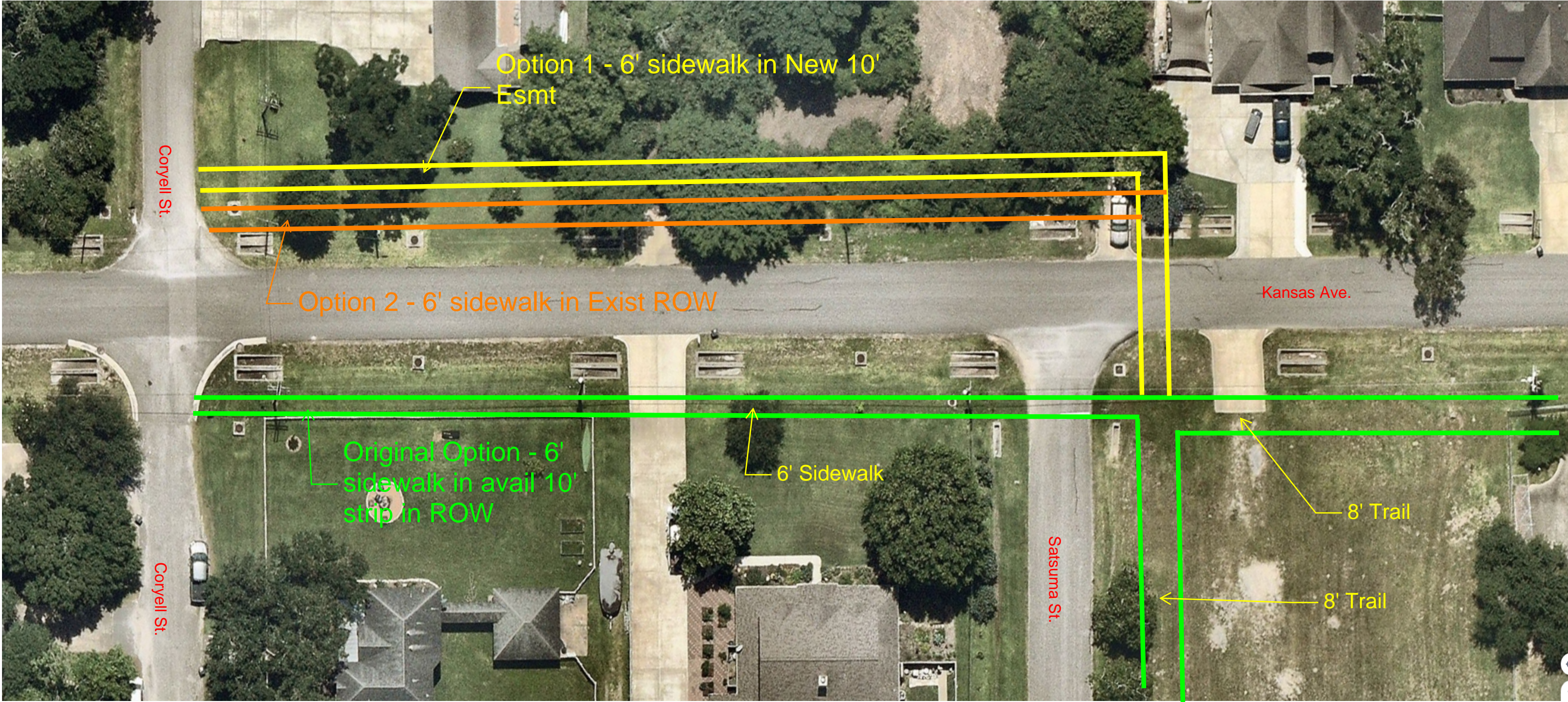
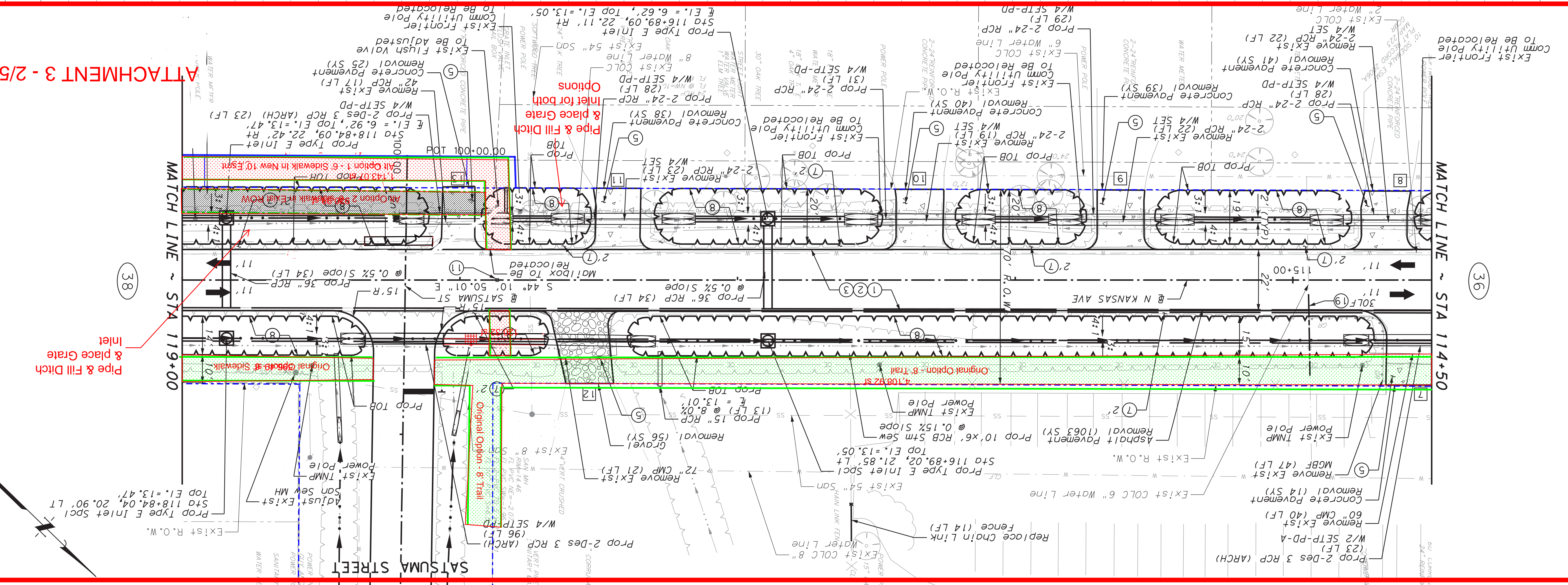
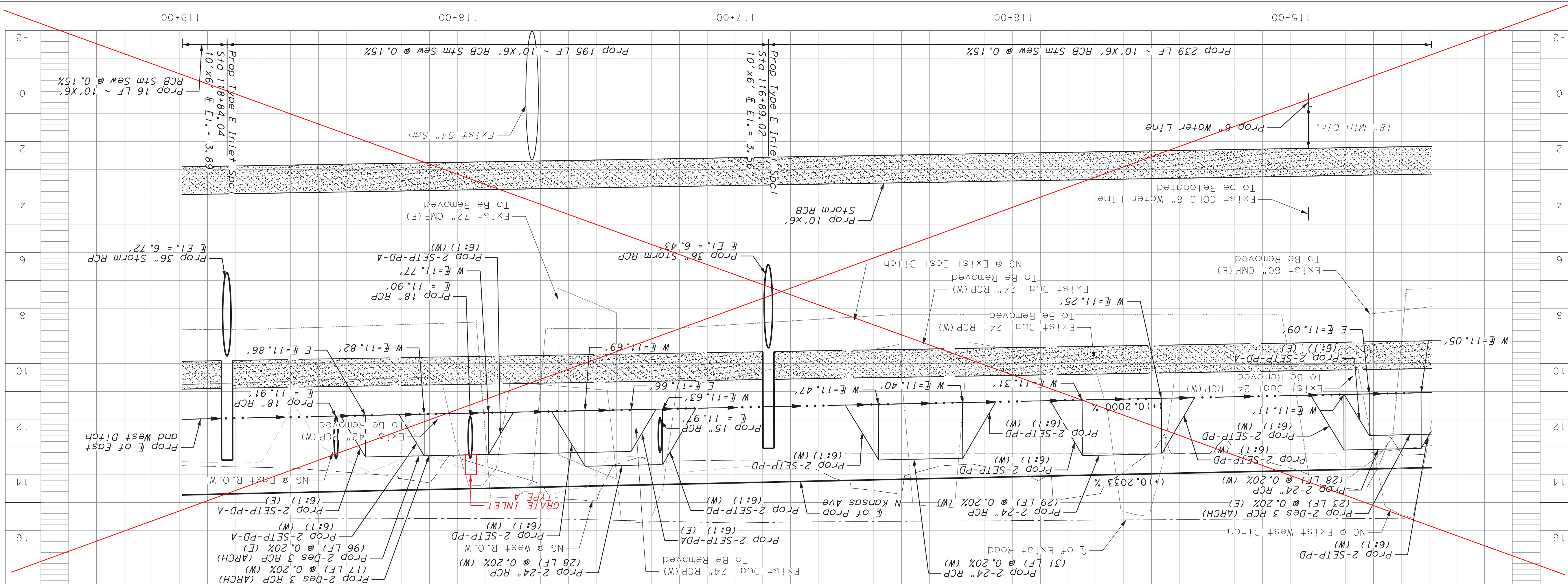


General Layout - OPTIONS



RECORD DRAWINGS



LEGEND

1	6" LIME TREATED SUBGRADE
2	8" CRUSHED CONCRETE BASE
3	2" HMAc
4	6" CONCRETE TRAIL
5	CONCRETE DRIVEWAY
6	ASPHALT DRIVEWAY
7	BLACK SODDING
8	HYDROMULCH SEEDING
9	REFL PAV MKR (W) 24" (SLD)
10	REFL PAV MKR (W) 12" (SLD)
11	4" 2-WAY REFL PAV MKR
12	PROPOSED TYPE 4 CURB RAMP
13	RELOCATED STOP SIGN
14	PROP 2" GATE VALVE & BOX
15	PROP 2" WET CONNECTION
16	PROP 2"x45" BEND, AB
17	PROP 2"x2" TEE, AB
18	REMOVE GATE VALVE & BOX
19	RELOCATE WATER LINE SEE
20	DRIVEWAY #
21	GRAVEL REMOVAL
22	CONCRETE PAVEMENT REMOVAL
23	MILL AND ASPHALT OVERLAY
24	EXIST TRAFFIC FLOW
25	PROP TRAFFIC FLOW
26	OE OVERHEAD ELECTRIC
27	OH-C OVERHEAD COPPER
28	B-C BURIED COPPER
29	F/O BURIED FIBER OPTIC
30	SS-SANITARY SEWER
31	W---COLC WATER LINE

NOTES:

1. GRAVEL REMOVAL PAID UNDER ITEM 105 6021
2. SAWCUTS ARE INCIDENTAL TO VARIOUS BID ITEMS
3. POWER POLES AND UTILITY POLES TO BE RELOCATED BY OTHERS
4. ALL PAVEMENT MARKINGS WILL BE REFLORIZED THERMOPLASTIC
5. ALL WATER LINE FITTINGS INCIDENTAL TO VARIOUS BID ITEMS
6. TYPE E INLETS PAID UNDER ITEM 465 6154
7. ITEM 0672 6009 REFL BLUE PAV MKRS PAID UNDER

REVISIONS

NO.	DATE	REVISIONS
15	2/14/18	SHIFT RCB 4' TOWARD
14	7/23/18	ADDED GRATE INLET
13	7/23/18	ADDED 12" RCP
12	9/6/18	ADDED RED REFLECTORS

SCALE: 1" = 20'

DATE: 9/6/2018

JOB NO.: 05523-0005-00

SUBMITTED: SURV. BY: DWN. BY: CCL

F.B. NO.: _____

STA 114+50 TO STA 119+00

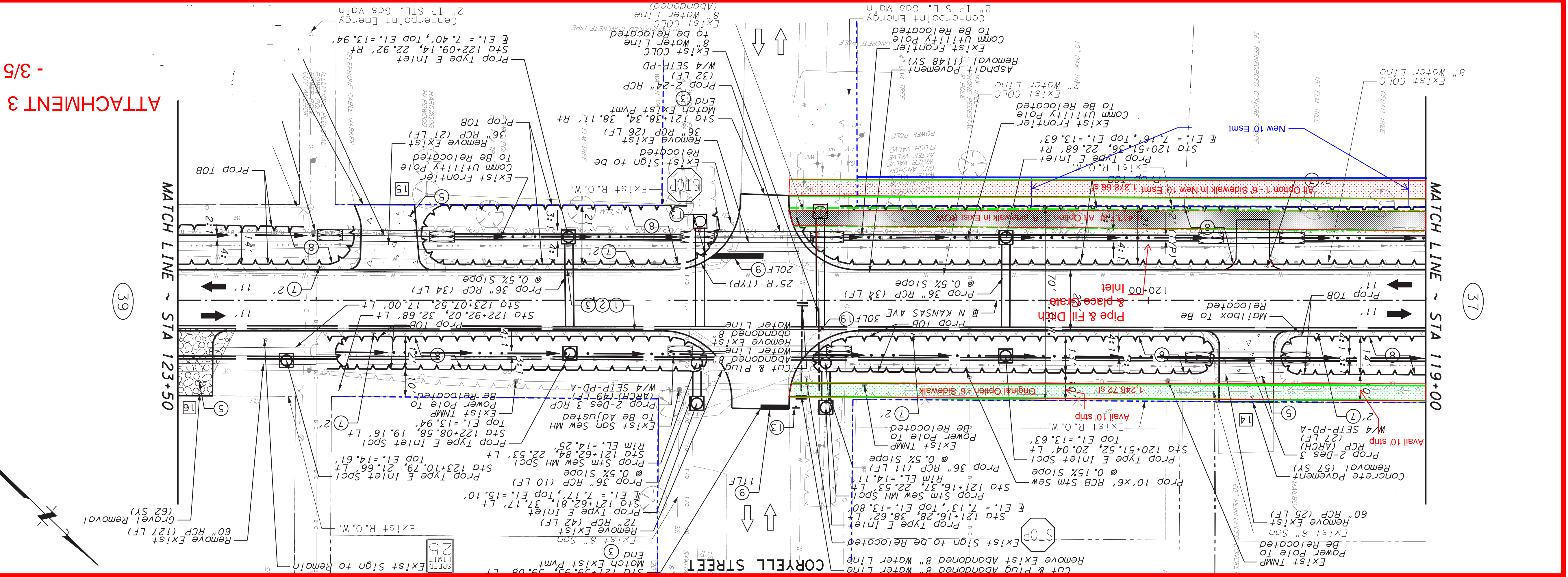
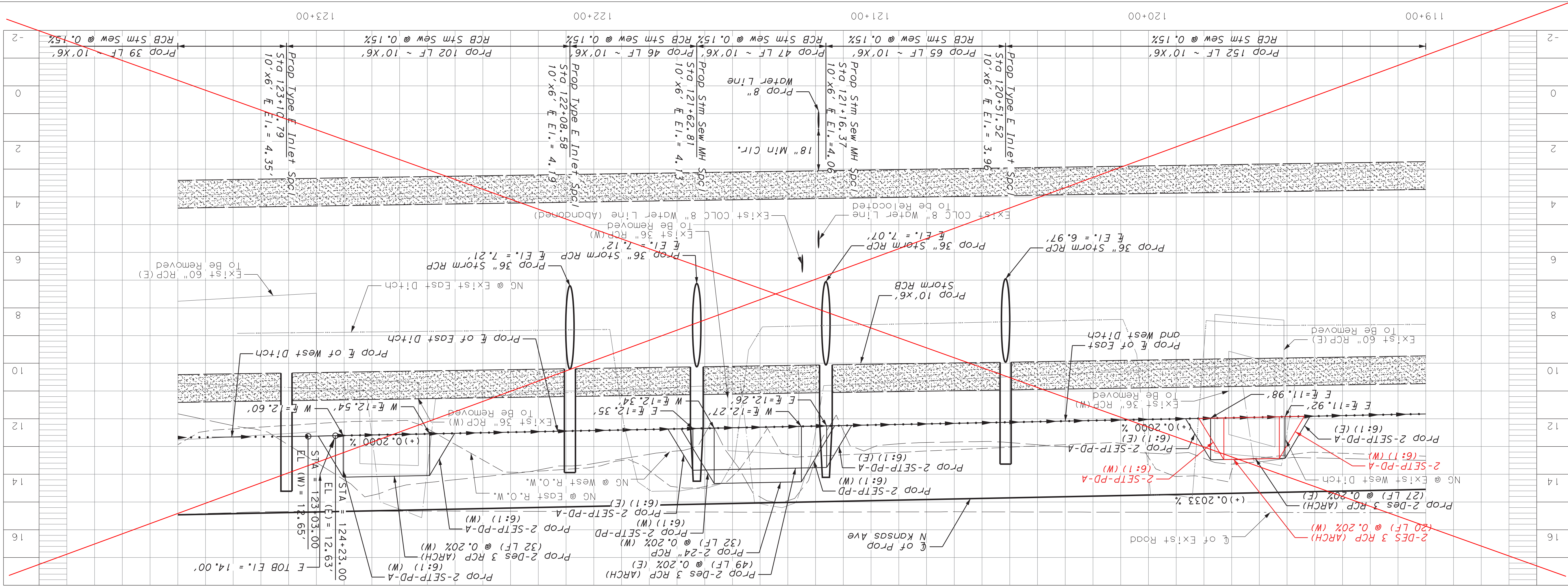
NORTH KANSAS AVENUE RECONSTRUCTION

CITY OF LEAGUE CITY GALVESTON COUNTY, TEXAS

Texas Board of Professional Engineers Registration No. C-439

6330 West Loop South, Suite 150 - Bellaire, TX 77401 - 713.777.5537

RECORD DRAWINGS



LEGEND

1

6" LIME TREATED SUBGRADE

2

8" CRUSHED CONCRETE BASE

3

2" HMAc

4

6" CONCRETE TRAIL

5

CONCRETE DRIVEWAY

6

ASPHALT DRIVEWAY

7

BLACK SODDING

8

HYDRMULCH SEEDING

9

REFL PAV MKR (W) 24" (SLD)

10

REFL PAV MKR (W) 12" (SLD)

11

4" 2-WAY REFL BLUE PAV MKR

12

PROPOSED TYPE 4 CURB RAMP

13

RELOCATED STOP SIGN

14

PROP 2" GATE VALVE & BOX

15

PROP 2" WET CONNECTION

16

PROP 2"x45" BEND, AB

17

PROP 2"x2" TEE, AB

18

REMOVE GATE VALVE & BOX

19

RELOCATE WATER LINE SEE

20

DRIVEWAY #

21

GRAVEL REMOVAL

22

CONCRETE PAVEMENT REMOVAL

23

MILL AND ASPHALT OVERLAY

24

EXIST TRAFFIC FLOW

25

PROP TRAFFIC FLOW

26

OE OVERHEAD ELECTRIC

27

OH-C OVERHEAD COPPER

28

B-C BURIED COPPER

29

F/O BURIED FIBER OPTIC

30

-SS SANITARY SEWER

31

W --- COLC WATER LINE

32

NOTES:

33

1. GRAVEL REMOVAL PAID UNDER

34

2. SAWCUTS ARE INCIDENTAL TO

35

3. VARIOUS BID ITEMS

36

4. ALL PAVEMENT MARKINGS WILL

37

BE REFLORIZED THERMOPLASTIC

38

5. ALL WATER LINE FITTINGS

39

INCIDENTAL TO VARIOUS BID ITEMS

40

6. TYPE E INLETS PAID UNDER

41

ITEM 465 6154

42

7. REFL BLUE PAV MKRS PAID UNDER

43

ITEM 0672 6009

44

15 2/14/18 SHIFT RCB 4" TOWARDS &

45

3/22/18 REMOVED PROP SIDEWALK

46

5/17/18 ADDED 12"x18" DRIVEWAY

47

5/17/18 ADDED TYPE E INLETS AT

48

CORRELL/KANSAS

49

NO. DATE

50

REVISIONS

51

APP.

52

CITY OF LEAGUE CITY

53

GALVESTON COUNTY, TEXAS

54

NORTH KANSAS AVENUE

55

RECONSTRUCTION

56

PLAN AND PROFILE

57

STA 119+00 TO STA 123+50

58

SCALE: 1" = 20'

59

60 40 20 0

60

LEGEND

61

1 6" LIME TREATED SUBGRADE

62

2 8" CRUSHED CONCRETE BASE

63

3 2" HMAc

64

4 6" CONCRETE TRAIL

65

5 CONCRETE DRIVEWAY

66

6 ASPHALT DRIVEWAY

67

7 BLACK SODDING

68

8 HYDRMULCH SEEDING

69

9 REFL PAV MKR (W) 24" (SLD)

70

10 REFL PAV MKR (W) 12" (SLD)

71

11 4" 2-WAY REFL BLUE PAV MKR

72

12 PROPOSED TYPE 4 CURB RAMP

73

13 RELOCATED STOP SIGN

74

14 PROP 2" GATE VALVE & BOX

75

15 PROP 2" WET CONNECTION

76

16 PROP 2"x45" BEND, AB

77

17 PROP 2"x2" TEE, AB

78

18 REMOVE GATE VALVE & BOX

79

19 RELOCATE WATER LINE SEE

80

20 DRIVEWAY #

81

21 GRAVEL REMOVAL

82

22 CONCRETE PAVEMENT REMOVAL

83

23 MILL AND ASPHALT OVERLAY

84

24 EXIST TRAFFIC FLOW

85

25 PROP TRAFFIC FLOW

86

26 OE OVERHEAD ELECTRIC

87

27 OH-C OVERHEAD COPPER

88

28 B-C BURIED COPPER

89

29 F/O BURIED FIBER OPTIC

90

30 -SS SANITARY SEWER

91

31 W --- COLC WATER LINE

92

32 NOTES:

93

33 1. GRAVEL REMOVAL PAID UNDER

94

34 2. SAWCUTS ARE INCIDENTAL TO

95

35 3. VARIOUS BID ITEMS

96

36 4. ALL PAVEMENT MARKINGS WILL

97

37 BE REFLORIZED THERMOPLASTIC

98

38 5. ALL WATER LINE FITTINGS

99

39 INCIDENTAL TO VARIOUS BID ITEMS

100

40 6. TYPE E INLETS PAID UNDER

101

41 ITEM 465 6154

102

42 7. REFL BLUE PAV MKRS PAID UNDER

103

43 ITEM 0672 6009

104

44 15 2/14/18 SHIFT RCB 4" TOWARDS &

105

45 3/22/18 REMOVED PROP SIDEWALK

106

46 5/17/18 ADDED 12"x18" DRIVEWAY

107

47 5/17/18 ADDED TYPE E INLETS AT

108

48 CORRELL/KANSAS

109

49 NO. DATE

110

50 REVISIONS

111

51 APP.

112

52 CITY OF LEAGUE CITY

113

53 GALVESTON COUNTY, TEXAS

114

54 NORTH KANSAS AVENUE

115

55 RECONSTRUCTION

116

56 PLAN AND PROFILE

117

57 STA 119+00 TO STA 123+50

118

58 SCALE: 1" = 20'

119

59 60 40 20 0

120

60 LEGEND

121

61 1 6" LIME TREATED SUBGRADE

122

62 2 8" CRUSHED CONCRETE BASE

123

63 3 2" HMAc

124

64 4 6" CONCRETE TRAIL

125

65 CONCRETE DRIVEWAY

126

66 ASPHALT DRIVEWAY

127

67 BLACK SODDING

128

68 HYDRMULCH SEEDING

129

69 REFL PAV MKR (W) 24" (SLD)

130

70 REFL PAV MKR (W) 12" (SLD)

131

71 4" 2-WAY REFL BLUE PAV MKR

132

72 PROPOSED TYPE 4 CURB RAMP

133

73 RELOCATED STOP SIGN

134

74 PROP 2" GATE VALVE & BOX

135

75 PROP 2" WET CONNECTION

136

76 PROP 2"x45" BEND, AB

137

77 PROP 2"x2" TEE, AB

138

78 REMOVE GATE VALVE & BOX

139

79 RELOCATE WATER LINE SEE

140

80 DRIVEWAY #

141

81 GRAVEL REMOVAL

142

82 CONCRETE PAVEMENT REMOVAL

143

83 MILL AND ASPHALT OVERLAY

144

84 EXIST TRAFFIC FLOW

145

85 PROP TRAFFIC FLOW

146

86 OE OVERHEAD ELECTRIC

147

87 OH-C OVERHEAD COPPER

148

88 B-C BURIED COPPER

149

89 F/O BURIED FIBER OPTIC

150

90 -SS SANITARY SEWER

151

91 W --- COLC WATER LINE

152

92 NOTES:

153

93 1. GRAVEL REMOVAL PAID UNDER

154

94 2. SAWCUTS ARE INCIDENTAL TO

155

95 3. VARIOUS BID ITEMS

156

96 4. ALL PAVEMENT MARKINGS WILL

157

97 BE REFLORIZED THERMOPLASTIC

158

98 5. ALL WATER LINE FITTINGS

159

99 INCIDENTAL TO VARIOUS BID ITEMS

160

100 6. TYPE E INLETS PAID UNDER

161

101 ITEM 465 6154

162

102 7. REFL BLUE PAV MKRS PAID UNDER

163

103 ITEM 0672 6009

164

104 15 2/14/18 SHIFT RCB 4" TOWARDS &

165

105 3/22/18 REMOVED PROP SIDEWALK

166

106 5/17/18 ADDED 12"x18" DRIVEWAY

167

107 5/17/18 ADDED TYPE E INLETS AT

168

108 CORRELL/KANSAS

169

109 NO. DATE

170

110 REVISIONS

171

111 APP.

172

112 CITY OF LEAGUE CITY

173

113 GALVESTON COUNTY, TEXAS

174

114 NORTH KANSAS AVENUE

175

115 RECONSTRUCTION

176

116 PLAN AND PROFILE

177

117 STA 119+00 TO STA 123+50

178

118 SCALE: 1" = 20'

179

119 60 40 20 0

180

120 LEGEND

181

121 1 6" LIME TREATED SUBGRADE

182

122 2 8" CRUSHED CONCRETE BASE

183

123 3 2" HMAc

184

124 4 6" CONCRETE TRAIL

185

125 CONCRETE DRIVEWAY

186

126 ASPHALT DRIVEWAY

187

127 BLACK SODDING

188

128 HYDRMULCH SEEDING

189

129 REFL PAV MKR (W) 24" (SLD)

190

130 REFL PAV MKR (W) 12" (SLD)

191

131 4" 2-WAY REFL BLUE PAV MKR

192

132 PROPOSED TYPE 4 CURB RAMP

193

133 RELOCATED STOP SIGN

194

134 PROP 2" GATE VALVE & BOX

195

135 PROP 2" WET CONNECTION

196

136 PROP 2"x45" BEND, AB

197

137 PROP 2"x2" TEE, AB

198

138 REMOVE GATE VALVE & BOX

199

139 RELOCATE WATER LINE SEE

200

140 DRIVEWAY #

201

141 GRAVEL REMOVAL

202

142 CONCRETE PAVEMENT REMOVAL

203

143 MILL AND ASPHALT OVERLAY

204

144 EXIST TRAFFIC FLOW

205

145 PROP TRAFFIC FLOW

206

146 OE OVERHEAD ELECTRIC

207

147 OH-C OVERHEAD COPPER

208

148 B-C BURIED COPPER

209

149 F/O BURIED FIBER OPTIC

210

150 -SS SANITARY SEWER

211

151 W --- COLC WATER LINE

212

152 NOTES:

213

153 1. GRAVEL REMOVAL PAID UNDER

214

154 2. SAWCUTS ARE INCIDENTAL TO

215

155 3. VARIOUS BID ITEMS

216

156 4. ALL PAVEMENT MARKINGS WILL

217

157 BE REFLORIZED THERMOPLASTIC

218

158 5. ALL WATER LINE FITTINGS

219

159 INCIDENTAL TO VARIOUS BID ITEMS

220

160 6. TYPE E INLETS PAID UNDER

221

161 ITEM 465 6154

222

162 7. REFL BLUE PAV MKRS PAID UNDER

223

163 ITEM 0672 6009

224

164 15 2/14/18 SHIFT RCB 4" TOWARDS &

225

165 3/22/18 REMOVED PROP SIDEWALK

226

166 5/17/18 ADDED 12"x18" DRIVEWAY

227

167 5/17/18 ADDED TYPE E INLETS AT

228

168 CORRELL/KANSAS

229

169 NO. DATE

230

170 REVISIONS

231

171 APP.

232

172 CITY OF LEAGUE CITY

233

173 GALVESTON COUNTY, TEXAS

234

174 NORTH KANSAS AVENUE

235

175 RECONSTRUCTION

236

176 PLAN AND PROFILE

237

177 STA 119+00 TO STA 123+50

238

178 SCALE: 1" = 20'

239

179 60 40 20 0

240

180 LEGEND

241

181 1 6" LIME TREATED SUBGRADE

242

182 2 8" CRUSHED CONCRETE BASE

243

183 3 2" HMAc

244

184 4 6" CONCRETE TRAIL

245

185 CONCRETE DRIVEWAY

246

186 ASPHALT DRIVEWAY

247

187 BLACK SODDING

248

188 HYDRMULCH SEEDING

249

189 REFL PAV MKR (W) 24" (SLD)

250

190 REFL PAV MKR (W) 12" (SLD)

251

191 4" 2-WAY REFL BLUE PAV MKR

252

192 PROPOSED TYPE 4 CURB RAMP

253

193 RELOCATED STOP SIGN

254

194 PROP 2" GATE VALVE & BOX

255

195 PROP 2" WET CONNECTION

256

196 PROP 2"x45" BEND, AB

257

197 PROP 2"x2" TEE, AB

258

198 REMOVE GATE VALVE & BOX

259

199 RELOCATE WATER LINE SEE

260

200 DRIVEWAY #

261

201 GRAVEL REMOVAL

262

202 CONCRETE PAVEMENT REMOVAL

263

203 MILL AND ASPHALT OVERLAY

264

204 EXIST TRAFFIC FLOW

265

205 PROP TRAFFIC FLOW

266

206 OE OVERHEAD ELECTRIC

267

207 OH-C OVERHEAD COPPER

268

208 B-C BURIED COPPER

269

209 F/O BURIED FIBER OPTIC

270

210 -SS SANITARY SEWER

271

211 W --- COLC WATER LINE

272

212 NOTES:

273

213 1. GRAVEL REMOVAL PAID UNDER

274

214 2. SAWCUTS ARE INCIDENTAL TO

275

215 3. VARIOUS BID ITEMS

276

216 4. ALL PAVEMENT MARKINGS WILL

277

217 BE REFLORIZED THERMOPLASTIC

278

218 5. ALL WATER LINE FITTINGS

279

219 INCIDENTAL TO VARIOUS BID ITEMS

280

220 6. TYPE E INLETS PAID UNDER

281

221 ITEM 465 6154

282

222 7. REFL BLUE PAV MKRS PAID UNDER

283

223 ITEM 0672 6009

284

224 15 2/14/18 SHIFT RCB 4" TOWARDS &

285

225 3/22/18 REMOVED PROP SIDEWALK

286

226 5/17/18 ADDED 12"x18" DRIVEWAY

287

227 5/17/18 ADDED TYPE E INLETS AT

288

228 CORRELL/KANSAS

289

229 NO. DATE

290

230 REVISIONS

291

231 APP.

292

232 CITY OF LEAGUE CITY

293

233 GALVESTON COUNTY, TEXAS

294

234 NORTH KANSAS AVENUE

295

235 RECONSTRUCTION

296

236 PLAN AND PROFILE

297

237 STA 119+00 TO STA 123+50

298

238 SCALE: 1" = 20'

299

239 60 40 20 0

300

240 LEGEND

301

241 1 6" LIME TREATED SUBGRADE

302

242 2 8" CRUSHED CONCRETE BASE

303

243 3 2" HMAc

304

244 4 6" CONCRETE TRAIL

305

245 CONCRETE DRIVEWAY

306

246 ASPHALT DRIVEWAY

307

247 BLACK SODDING

308

248 HYDRMULCH SEEDING

309

249 REFL PAV MKR (W) 24" (SLD)

310

250 REFL PAV MKR (W) 12" (SLD)

311

251 4" 2-WAY REFL BLUE PAV MKR

312

252 PROPOSED TYPE 4 CURB RAMP

313

253 RELOCATED STOP SIGN

314

254 PROP 2" GATE VALVE & BOX

315

255 PROP 2" WET CONNECTION

316

256 PROP 2"x45" BEND, AB

317

257 PROP 2"x2" TEE, AB

318

258 REMOVE GATE VALVE & BOX

319

259 RELOCATE WATER LINE SEE

320

260 DRIVEWAY #

321

261 GRAVEL REMOVAL

322

262 CONCRETE PAVEMENT REMOVAL

323

263 MILL AND ASPHALT OVERLAY

324

264 EXIST TRAFFIC FLOW

325

265 PROP TRAFFIC FLOW

326

266 OE OVERHEAD ELECTRIC

327

267 OH-C OVERHEAD COPPER

328

268 B-C BURIED COPPER

329

269 F/O BURIED FIBER OPTIC

330

270 -SS SANITARY SEWER

331

271 W --- COLC WATER LINE

332

272 NOTES:

333

273 1. GRAVEL REMOVAL PAID UNDER

334

274 2. SAWCUTS ARE INCIDENTAL TO

335

275 3. VARIOUS BID ITEMS

336

276 4. ALL PAVEMENT MARKINGS WILL

337

277 BE REFLORIZED THERMOPLASTIC

338

278 5. ALL WATER LINE FITTINGS

339

279 INCIDENTAL TO VARIOUS BID ITEMS

340

280 6. TYPE E INLETS PAID UNDER

341

281 ITEM 465 6154

342

282 7. REFL BLUE PAV MKRS PAID UNDER

343

283 ITEM 0672 6009

344

284 15 2/14/18 SHIFT RCB 4" TOWARDS &

345

285 3/22/18 REMOVED PROP SIDEWALK

346

286 5/17/18 ADDED 12"x18" DRIVEWAY

347

287 5/17/18 ADDED TYPE E INLETS AT

348

288 CORRELL/KANSAS

349

289 NO. DATE

350

290 REVISIONS

351

291 APP.

352

292 CITY OF LEAGUE CITY

353

293 GALVESTON COUNTY, TEXAS

354

294 NORTH KANSAS AVENUE

355

295 RECONSTRUCTION

356

296 PLAN AND PROFILE

357

297 STA 119+00 TO STA 123+50

358

298 SCALE: 1" = 20'

359

299 60 40 20 0

360

300 LEGEND

361

301 1 6" LIME TREATED SUBGRADE

362

302 2 8" CRUSHED CONCRETE BASE

363

303 3 2" HMAc

364

304 4 6" CONCRETE TRAIL

365

305 CONCRETE DRIVEWAY

366

306 ASPHALT DRIVEWAY

367

307 BLACK SODDING

368

308 HYDRMULCH SEEDING

369

309 REFL PAV MKR (W) 24" (SLD)

370

310 REFL PAV MKR (W) 12" (SLD)

371

311 4" 2-WAY REFL BLUE PAV MKR

372

312 PROPOSED TYPE 4 CURB RAMP

373

313 RELOCATED STOP SIGN

374

314 PROP 2" GATE VALVE & BOX

375

315 PROP 2" WET CONNECTION

376

316 PROP 2"x45" BEND, AB

377

317 PROP 2"x2" TEE, AB

378

318 REMOVE GATE VALVE & BOX

379

319 RELOCATE WATER LINE SEE

380

320 DRIVEWAY #

381

321 GRAVEL REMOVAL

382

322 CONCRETE PAVEMENT REMOVAL

383

323 MILL AND ASPHALT OVERLAY

384

324 EXIST TRAFFIC FLOW

385

325 PROP TRAFFIC FLOW

386

326 OE OVERHEAD ELECTRIC

387

327 OH-C OVERHEAD COPPER

388

328 B-C BURIED COPPER

389

329 F/O BURIED FIBER OPTIC

390

330 -SS SANITARY SEWER

391

331 W --- COLC WATER LINE

392

332 NOTES:

393

333 1. GRAVEL REMOVAL PAID UNDER

394

334 2. SAWCUTS ARE INCIDENTAL TO

395

335 3. VARIOUS BID ITEMS

396

336 4. ALL PAVEMENT MARKINGS WILL

397

337 BE REFLORIZED THERMOPLASTIC

398

338 5. ALL WATER LINE FITTINGS

399

339 INCIDENTAL TO VARIOUS BID ITEMS

400

340 6. TYPE E INLETS PAID UNDER

401

341 ITEM 465 6154

402

342 7. REFL BLUE PAV MKRS PAID UNDER

403

343 ITEM 0672 6009

404

344 15 2/14/18 SHIFT RCB 4" TOWARDS &

405

345 3/22/18 REMOVED PROP SIDEWALK

406

346 5/17/18 ADDED 12"x18" DRIVEWAY

407

347 5/17/18 ADDED TYPE E INLETS AT

408

348 CORRELL/KANSAS

409

349 NO. DATE

410

350 REVISIONS

411

351 APP.

412

352 CITY OF LEAGUE CITY

413

353 GALVESTON COUNTY, TEXAS

414

354 NORTH KANSAS AVENUE

415

355 RECONSTRUCTION

416

356 PLAN AND PROFILE

417

357 STA 119+00 TO STA 123+50

418

358 SCALE: 1" = 20'

419

359 60 40 20 0

420

360 LEGEND

421

361 1 6" LIME TREATED SUBGRADE

422

362 2 8" CRUSHED CONCRETE BASE

423

363 3 2" HMAc

424

364 4 6" CONCRETE TRAIL

425

365 CONCRETE DRIVEWAY

426

366 ASPHALT DRIVEWAY

427

367 BLACK SODDING

428

368 HYDRMULCH SEEDING

429

369 REFL PAV MKR (W) 24" (SLD)

430

370 REFL PAV MKR (W) 12" (SLD)

431

371 4" 2-WAY REFL BLUE PAV MKR

432

372 PROPOSED TYPE 4 CURB RAMP

433

373 RELOCATED STOP SIGN

434

374 PROP 2" GATE VALVE & BOX

435

3



Satsuma at Kansas Looking south



Satsuma at Kansas Looking south

