

PLANS OF PROPOSED WALTER HALL PARK SPECIAL EVENT TRAFFIC CONTROL



INDEX TO SHEETS

<u>SHEET NO.</u>	<u>SHEET DESCRIPTION</u>
1	COVER SHEET
2-3	TRAFFIC CONTROL PARK NORTH ENTRANCE
4	TRAFFIC CONTROL PARK SOUTH ENTRANCE



SITE MAP
N.T.S.



APPROVED BY:

CITY OF LEAGUE CITY
TRAFFIC ENGINEER

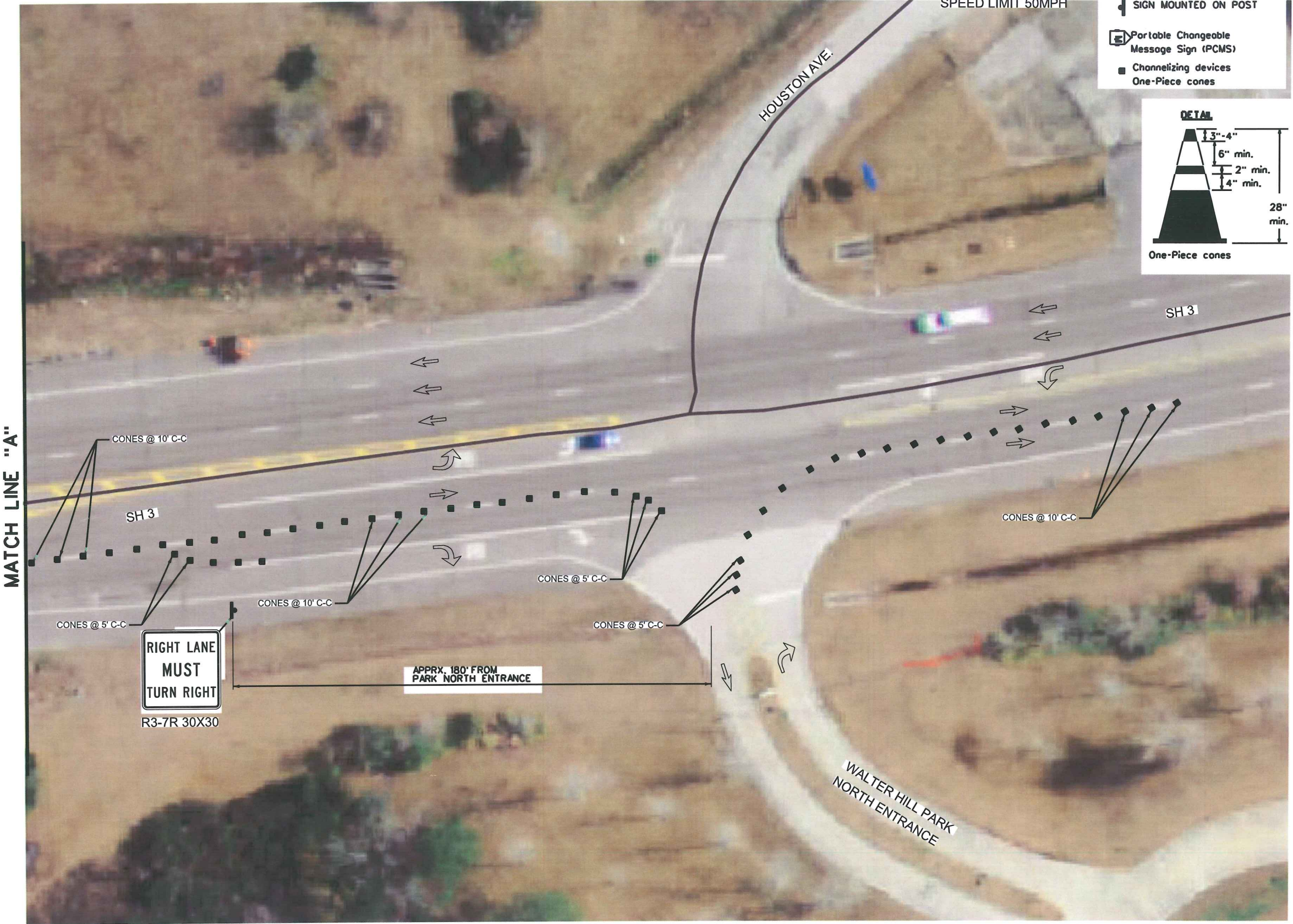
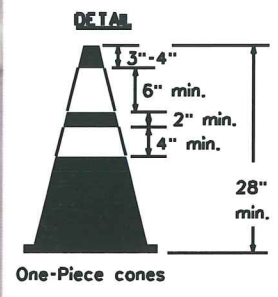
4-4-12

DATE

WALTER HALL PARK
TRAFFIC CONTROL



- LEGEND**
- ← DIRECTION OF TRAFFIC FLOW
 - █ SIGN MOUNTED ON POST
 - ▣ Portable Changeable Message Sign (PCMS)
 - Channelizing devices One-Piece cones



NOTES:

WARNING: UNDERGROUND UTILITIES CONTRACTOR IS RESPONSIBLE FOR LOCATING AND PROTECTING UNDERGROUND UTILITIES THAT MAY BE AFFECTED BY THIS PROJECT. GIVE UTILITY COMPANIES THE OPPORTUNITY TO LOCATE THEIR LINES BEFORE DIGGING. CALL LOCAL UTILITY COORDINATING COMMITTEE OR AGENCY TO HAVE UTILITY LOCATIONS MARKED.

WARNING: OVERHEAD ELECTRICAL LINES OVERHEAD ELECTRICAL LINES MAY EXIST ON THE PROPERTY. WE HAVE NOT ATTEMPTED TO MARK THOSE LINES SINCE THEY ARE CLEARLY VISIBLE, BUT SHOULD BE LOCATED PRIOR TO BEGINNING ANY CONSTRUCTION. TEXAS LAW, SECTION 752, HEALTH AND SAFETY CODE, FORBIDS ALL ACTIVITIES IN WHICH PERSONS OR THINGS MAY COME WITHIN SIX (6) FEET OF LIVE OVERHEAD HIGH VOLTAGE LINES. PARTIES RESPONSIBLE FOR THE WORK, INCLUDING CONTRACTORS, ARE LEGALLY RESPONSIBLE FOR THE SAFETY OF CONSTRUCTION WORKERS UNDER THIS LAW. THIS LAW CARRIES BOTH CRIMINAL AND CIVIL LIABILITY. FOR UTILITY LOCATES, CONTRACTOR SHALL CALL: LONESTAR-CALL BEFORE YOU DIG AT:
1-800-669-8344
CITY WATER & SANITARY SEWER: DIG TEST AT: 1-800-344-8377
CITY STORM SEWER: DIG TEST AT: 1-800-344-8377
CITY TRAFFIC AT: 281-554-1199



DATE	REVISION	BY

SH 3 @ WALTER HILL
PARK
NORTH ENTRANCE



PROJECT NO.	
DRAWN: M.M.B.	Checked
SCALE: N.T.S.	DATE: APRIL/2012
SHEET 1	OF 3

SDATES
STIMES
\$\$\$\$\$DGN\$SPECIFICATION\$\$\$\$\$

WALTER HALL PARK
TRAFFIC CONTROL

NOTES:

WARNING:
UNDERGROUND UTILITIES CONTRACTOR IS RESPONSIBLE FOR LOCATING AND PROTECTING UNDERGROUND UTILITIES THAT MAY BE AFFECTED BY THIS PROJECT. GIVE UTILITY COMPANIES THE OPPORTUNITY TO LOCATE THEIR LINES BEFORE DIGGING. CALL LOCAL UTILITY COORDINATING COMMITTEE OR AGENCY TO HAVE UTILITY LOCATIONS MARKED.

WARNING:
OVERHEAD ELECTRICAL LINES/OVERHEAD ELECTRICAL LINES MAY EXIST ON THE PROPERTY. WE HAVE NOT ATTEMPTED TO MARK THOSE LINES SINCE THEY ARE CLEARLY VISIBLE, BUT SHOULD BE LOCATED PRIOR TO BEGINNING ANY CONSTRUCTION. TEXAS LAW, SECTION 752, HEALTH AND SAFETY CODE, FORBIDS ALL ACTIVITIES IN WHICH PERSONS OR THINGS MAY COME WITHIN SIX (6) FEET OF LIVE OVERHEAD HIGH VOLTAGE LINES. PARTIES RESPONSIBLE FOR THE WORK, INCLUDING CONTRACTORS, ARE LEGALLY RESPONSIBLE FOR THE SAFETY OF CONSTRUCTION WORKERS UNDER THIS LAW. THIS LAW CARRIES BOTH CRIMINAL AND CIVIL LIABILITY.

FOR UTILITY LOCATES, CONTRACTOR SHALL CALL: LONESTAR-CALL BEFORE YOU DIG AT:
1-800-669-8344
CITY WATER & SANITARY SEWER:
DIG TEST AT: 1-800-344-8377
CITY STORM SEWER:
DIG TEST AT: 1-800-344-8377
CITY TRAFFIC AT: 281-554-1199



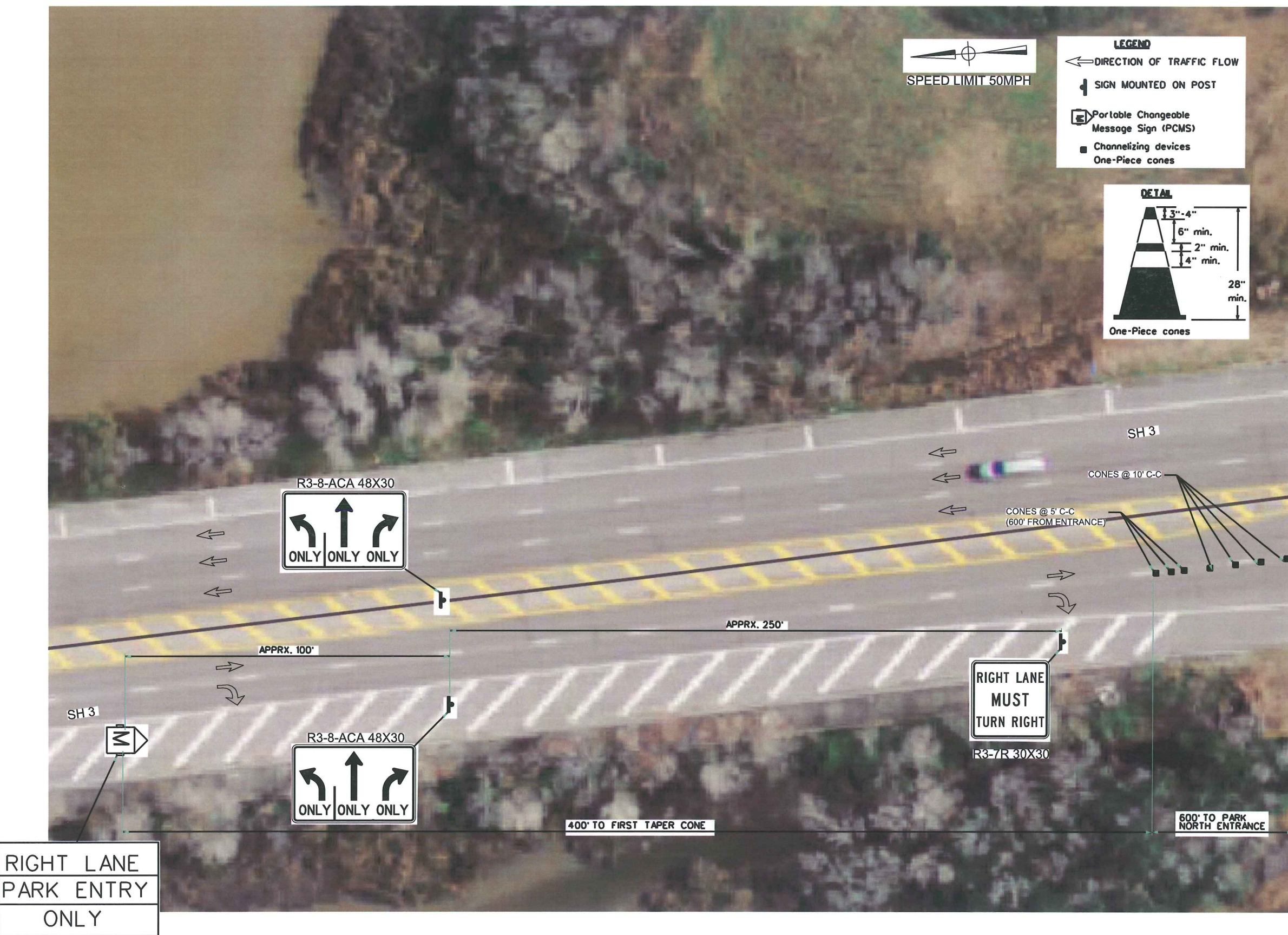
DATE	REVISION	BY

SH 3 @ WALTER HILL
PARK
NORTH ENTRANCE



Robert Linc Wright
4-4-12

PROJECT NO.	
DRAWN: M.M.B.	Checked
SCALE: N.T.S.	DATE: APRIL / 2012
SHEET 2	OF 3

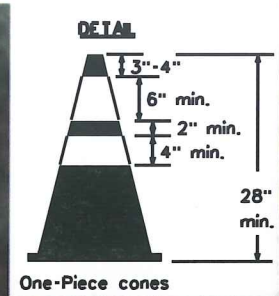


RIGHT LANE
PARK ENTRY
ONLY

DATE: 4/1/12 TIME: 11:55 AM SPECIFICATIONS: 11555

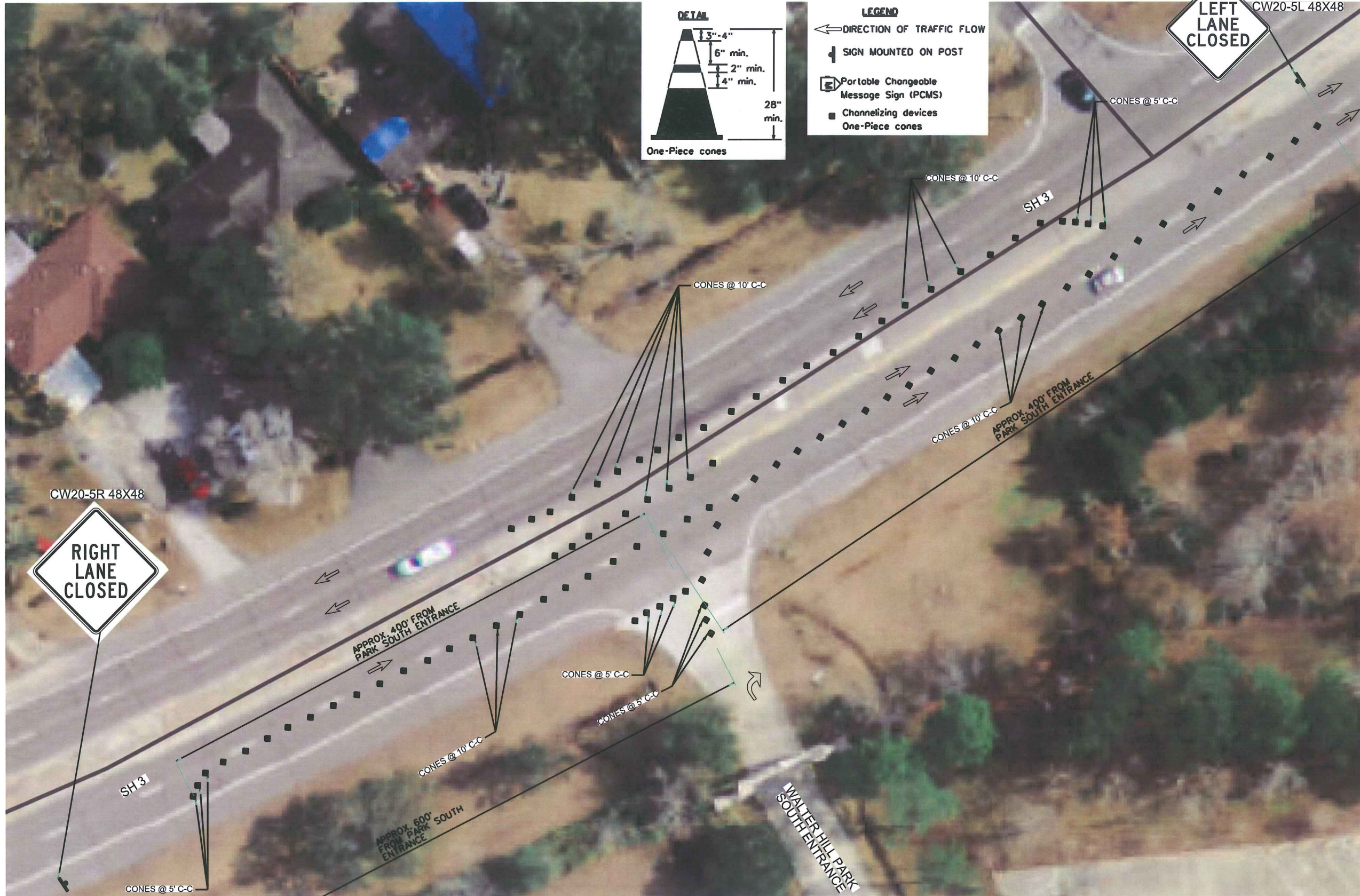
WALTER HALL PARK
TRAFFIC CONTROL

SPEED LIMIT 50MPH



LEGEND

- ← DIRECTION OF TRAFFIC FLOW
- ⊥ SIGN MOUNTED ON POST
- PCMS Portable Changeable Message Sign (PCMS)
- Channelizing devices One-Piece cones



NOTES:

WARNING: UNDERGROUND UTILITIES CONTRACTOR IS RESPONSIBLE FOR LOCATING AND PROTECTING UNDERGROUND UTILITIES THAT MAY BE AFFECTED BY THIS PROJECT. GIVE UTILITY COMPANIES THE OPPORTUNITY TO LOCATE THEIR LINES BEFORE DIGGING. CALL LOCAL UTILITY COORDINATING COMMITTEE OR AGENCY TO HAVE UTILITY LOCATIONS MARKED.

WARNING: OVERHEAD ELECTRICAL LINES OVERHEAD ELECTRICAL LINES MAY EXIST ON THE PROPERTY. WE HAVE NOT ATTEMPTED TO MARK THOSE LINES SINCE THEY ARE CLEARLY VISIBLE, BUT SHOULD BE LOCATED PRIOR TO BEGINNING ANY CONSTRUCTION. TEXAS LAW, SECTION 752, HEALTH AND SAFETY CODE, FORBIDS ALL ACTIVITIES IN WHICH PERSONS OR THINGS MAY COME WITHIN SIX (6) FEET OF LIVE OVERHEAD HIGH VOLTAGE LINES. PARTIES RESPONSIBLE FOR THE WORK, INCLUDING CONTRACTORS, ARE LEGALLY RESPONSIBLE FOR THE SAFETY OF CONSTRUCTION WORKERS UNDER THIS LAW. THIS LAW CARRIES BOTH CRIMINAL AND CIVIL LIABILITY. FOR UTILITY LOCATES, CONTRACTOR SHALL CALL: LONESTAR-CALL BEFORE YOU DIG AT:
1-800-669-8344
CITY WATER & SANITARY SEWER: DIG TEST AT: 1-800-344-8377
CITY STORM SEWER: DIG TEST AT: 1-800-344-8377
CITY TRAFFIC AT: 281-554-1199



DATE	REVISION	BY

SH 3 @ WALTER HILL
PARK
SOUTH ENTRANCE



PROJECT NO. _____
DRAWN: M.M.B. Checked _____
SCALE: N.T.S. DATE: APRIL / 2012
SHEET 3 OF 3

DATES: _____
 TIMES: _____
 SPECIFICATIONS: _____