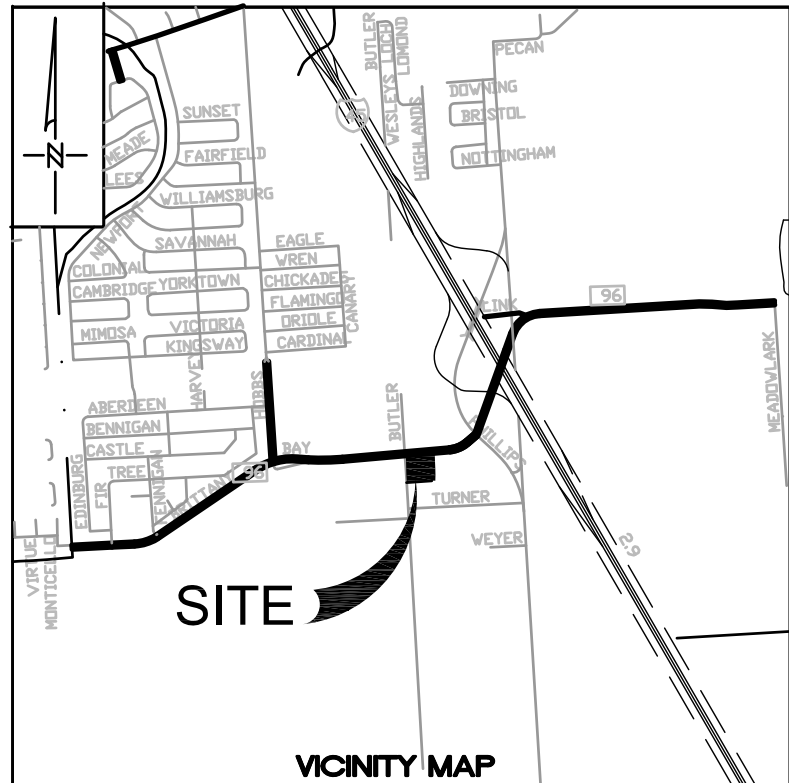
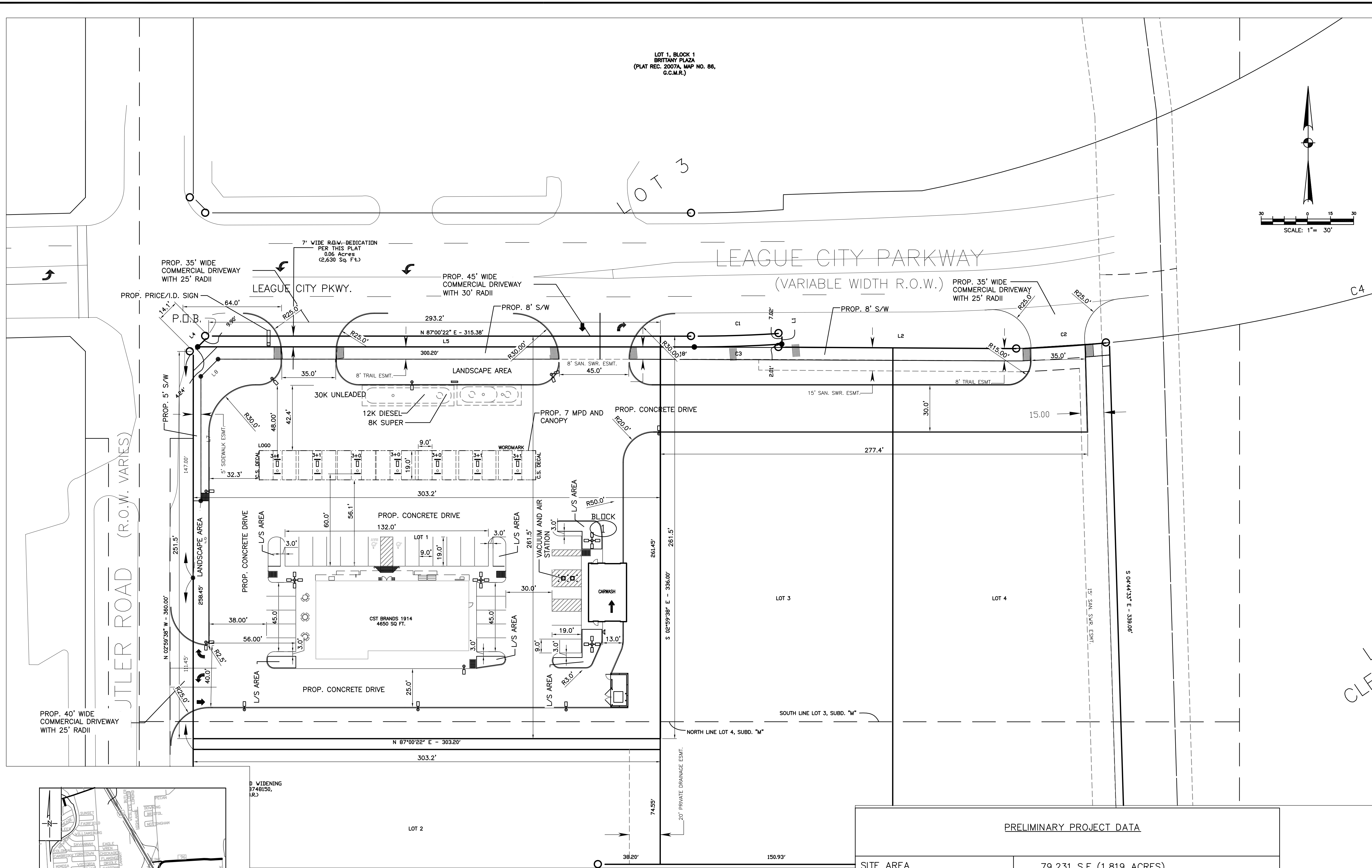


11 Sep 2015 2:24PM jdbrooks  
F:\project\BROOK\_SP\VALERO\342295 League City Parkway @ Butler Road\Exhibit\4-27-15 site plans to CST\CST 1914 site plan.dwg  
Includes Xref(s): x-site.dwg; X-TBLK.dwg; x-topo for exhibit.dwg



KEY MAP 658U  
SCALE: N.T.S.

PRELIMINARY PROJECT DATA	
SITE AREA	79,231 S.F. (1.819 ACRES)
BUILDING AREA	4650 S.F.
PARKING PROVIDED	42 SPACES
H.C. PARKING PROVIDED	2 SPACES
TOTAL PARKING (38 REQUIRED)	44 SPACES (14 SPACES UNDER FUEL CANOPY)
IMPERVIOUS COVER	±60,404 S.F. (76.24%)
PERVIOUS	±18827 S.F. (23.76%)

**BROOKS & SPARKS, INC.**  
CONSULTING ENGINEERING  
TEXAS BOARD PROFESSIONAL ENGINEERS NO. F-880  
21020 PARK ROW  
KATY, TX. 77449  
PHONE: (281) 578-9595  
FAX: (281) 578-9686

CST BRANDS, INC.

CST CORNER STORE  
NO. 1914

LOCATED AT  
1625 LEAGUE CITY PARKWAY  
LEAGUE CITY, TX 77573

PRELIMINARY SITE PLAN

NO.	DATE	REVISIONS	BY

DRAWN BY: JDB/MAG  
DESIGNED BY: MAG/GM  
PROJECT NO. 342-0292  
SCALE:

CHECKED BY: MAG/GWM  
APPROVED BY: GWM/FEB  
DATE: AUGUST 2015  
SHEET: