

## **Compressor fact finding REPORT**

**League City**

**Odin COMPRESSOR SC50 #8749**

---

**Your Order:** 45058727

---

**Our Ref. No.:** 804120

---

**Date:** 02. August 2016

---

<b>Persons involved:</b>	<b>Jens Schueler</b>	<b>Siemens – STE Frankenthal, DE</b>
	<b>Michael Debess</b>	<b>Siemens A/S – ACC Helsingør, DK</b>

---

**Purpose:** Fact finding for compressor #8749

Odin compressor SC50, serial number 62008749 has been received in Frankenthal Germany 26<sup>th</sup> of July 2016.

This compressor has been disassembled and checked for damaged and reusable parts in July 2016.

During the inspection our control department in Frankenthal has identified the following main parts to be replaced:

H303 Labyrinth sealing	Photo no. 1 + 2
X115 Thrust bearing	Photo no. 3
X116 Counter bearing	Photo no. 4
X124 Bearing complete Ø100	Photo no.5 + 6
X143 Bearing complete Ø100	Photo no. 7 + 8
X153 PT – 100 sensor	Photo no.9
X154 PT – 100 sensor	Photo no.10
R413 Thrust collar	Photo no.14
R420 Rotor shaft with bushings	Photo no 16 + 17
R427 Rotor magnet	Photo no 18 +19
R414 Impeller	Photo no 20+21
D136 Bushings D118/D117	
A501 Service parts, o - rings, screws, shims, filters etc.	

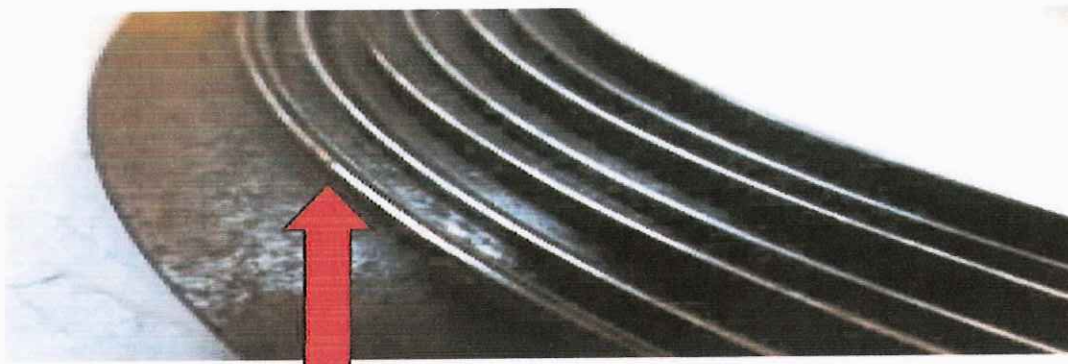


Photo no. 1: Labyrinth ring H303 with damaged cams.

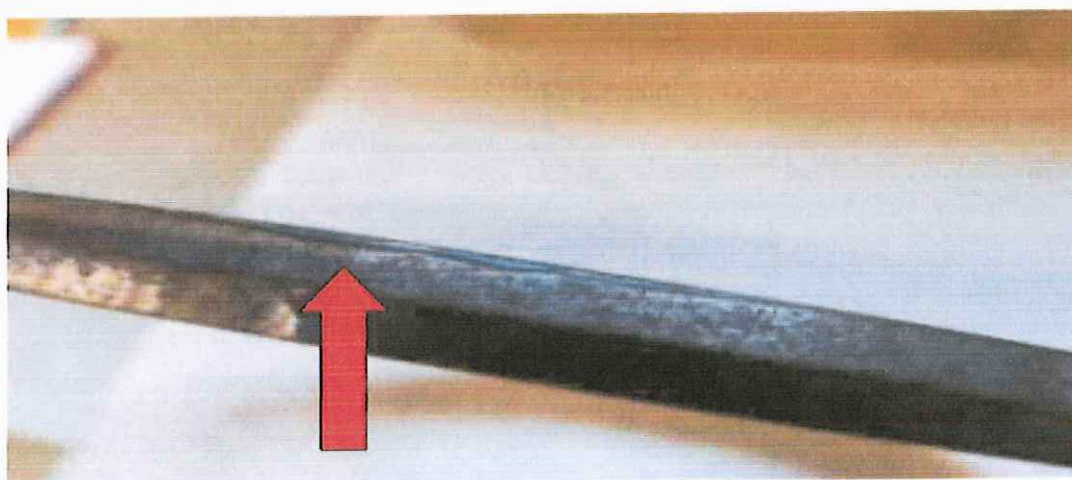


Photo no. 2: Labyrinth ring H303 with signs of over heating

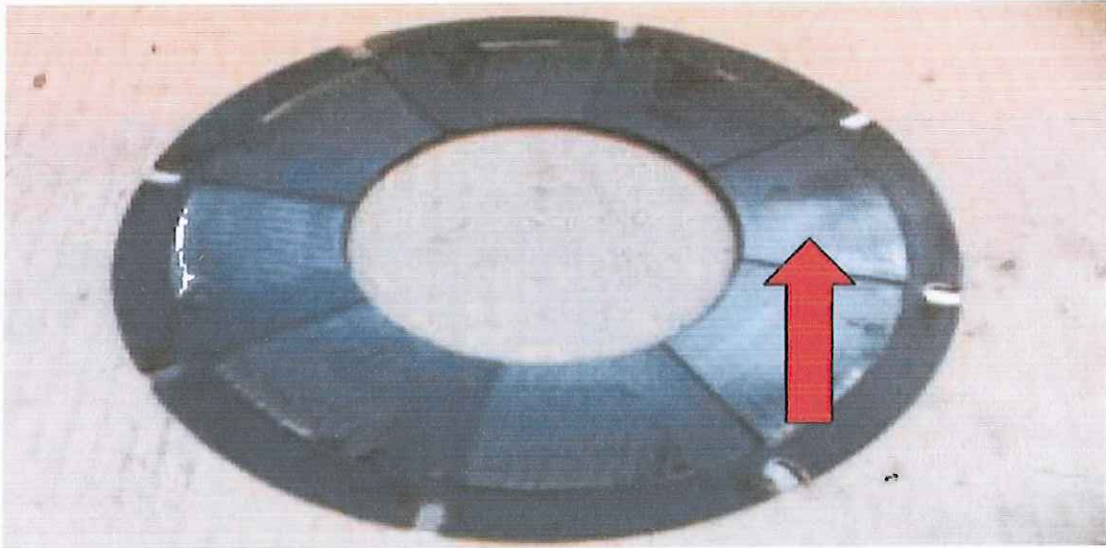


Photo no. 3: Thrust bearing X115 with clear wear marks on air foils.

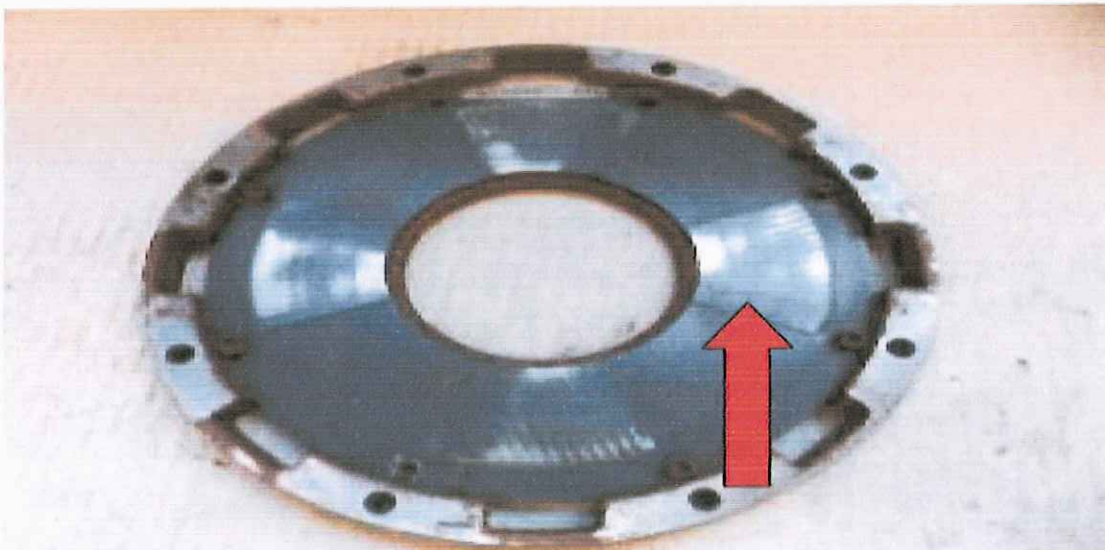


Photo no. 4: Counter bearing X116 with clear wear marks on air foils.



Photo 5 + 6: Bearing complete Ø100, X124 is damaged and shall be replaced. Quoted on 457360



Photo 7 + 8: Bearing complete Ø100 , X143 is damaged and shall be replaced. Quoted on 457360





Photo 9: PT – 100 sensors X153 and X154 is damaged.



Photo no. 10 Rotor parts.

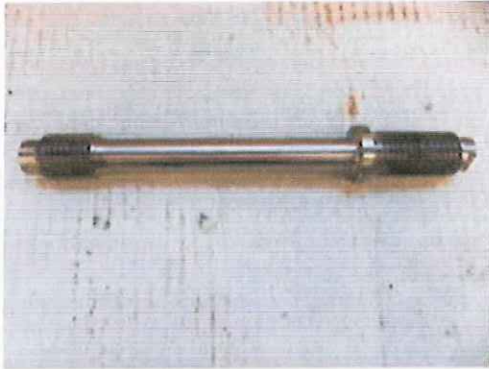


Photo 11: The central screw is visually in OK condition



Photo no. 12: Rotor nut R407 is visually in OK condition



Photo no. 13: Spinner R412 appears to be in ok condition



Photo no. 14: Thrust collars R413 is corroded.



Photo no. 15: The stop ring R408 shows sign of corrosion

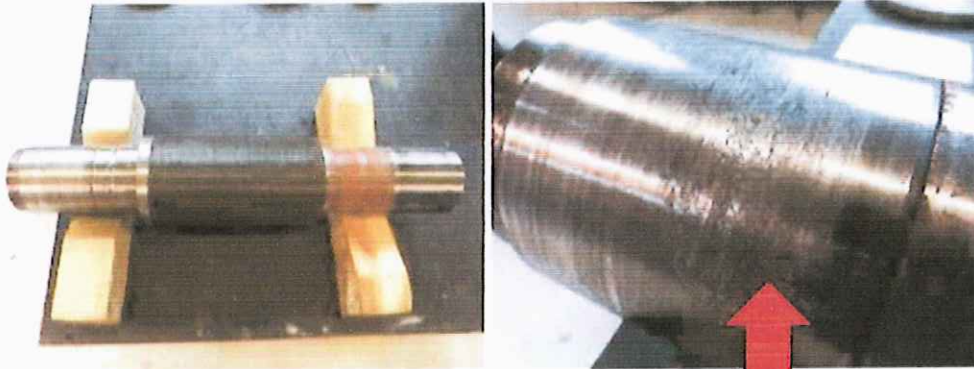


Photo no. 16 + 17: The rotor shaft with bushings R420 is corroded and damaged



Photo no. 18 + 19: The rotor magnet DBL120908B R427 is damaged.

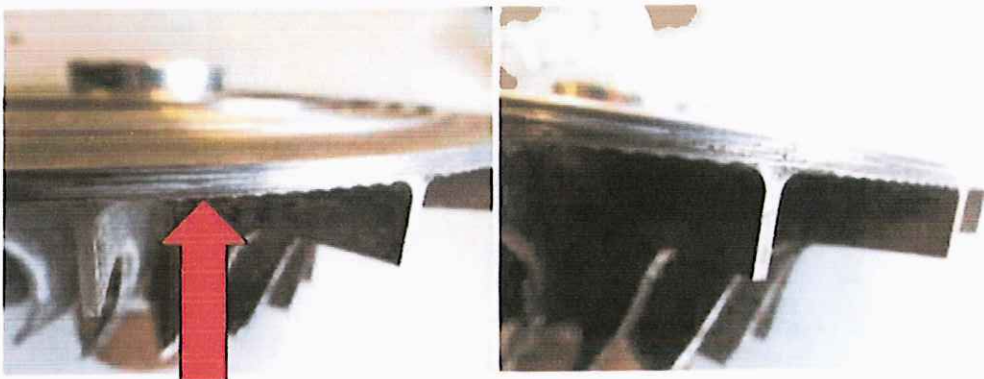


Photo 20 + 21: Impeller R414 with wear marks from contour ring.



League city  
REPORT  
#8749 SC50

Fact finding

02. august 2016 MD/8749-A

Helsingore, 2<sup>nd</sup> of august 2016

Michael Debess

Siemens A/S  
Aeration Competence Center  
Michael Debess

