



# City of League City, TX

300 West Walker  
League City TX 77573

## Text File

File Number: 15-0747

Agenda Date: 12/22/2015

Version: 1

Status: Consent Agenda

In Control: City Council

File Type: Agenda Item

Agenda Number: 11H.

### Title

Consider and take action on a resolution to approve the annual purchase of line repair materials from HD Supply Waterworks in the estimated amount of \$175,000 (Assistant City Manager)

### ..Background:

Approval of this item will provide for the purchase of annual line repair materials for the line repair department.

On Tuesday, November 24, 2015 sealed bids (16-008) were opened and evaluated. A total of two bidders provided bids. Overall, HD Supply Waterworks prices increased approximately 3.4% since their current contract, Bid #13-034, dated October 1, 2013. Based on the overall quality, performance and the number of items HD Supply provided unit prices on 402 line items out of 405 versus CPR Services who bid on 335 line items out of 405, HD Supply shall be awarded this contract. Comparing both vendors, minus all no bid items, HD Supply's overall total was \$22,854.21 less than CPR Services. The quantities listed are estimates and may vary; therefore this bid will be awarded on unit pricing. This will be a one year contract with the option to renew for up to a total of two additional one (1) year periods including an escalation factor of not more than three percent (3%) each additional year.

Contract Origination: Standard City contract, approved by City Attorney.

### Attachment:

1. Data Sheet
2. Contract
3. Bid Tabulation
4. Resolution

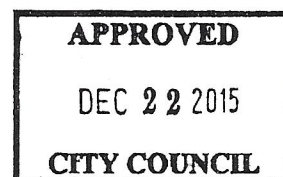
### FUNDING

{ } NOT APPLICABLE

{X} Funds are available from account Utility System - Repairs/Maintenance # 020-3321-685-5262

{ } Requires Budget Amendment to transfer from Account # \_\_\_\_\_ to Account # \_\_\_\_\_

*Resolution No. 2015-66*





## INVITATION TO BID

**BID #16-008**

### **MATERIALS FOR ANNUAL LINE REPAIRS**

The City of League City is now accepting sealed bids to supply the City with materials for line repairs.

**DEADLINE:** Sealed bid submittals must be received by **2:00 p.m., CST, Tuesday, November 24, 2015.** (The clock located at the receptionist desk in the lobby of City Hall will be the official time.) Bids received will be opened and read aloud immediately after the closing hour. Bids received after the deadline stated herein will not be opened and shall be considered void and unacceptable.

**MARK ENVELOPE:** *#16-008 – Materials for Annual Line Repairs*

**DELIVERY ADDRESS:** Please submit one (1) marked original and one (1) electronic copy (CD or flash drive) properly labeled and clearly marked with the Bid number and description to:

City of League City  
Purchasing Department  
300 West Walker  
League City, TX 77573  
Monday – Thursday: 8:00 am to 6:00 pm  
Friday: 8:00 am to 12:00 pm

Bids sent via courier must be sealed in a separate envelope inside of the mailer.

**POINT OF CONTACT:** All inquiries about this bid or specifications must be made, in writing, to Cathleen Timmerman, Contract Administrator, at [cathleen.timmerman@leaguecity.com](mailto:cathleen.timmerman@leaguecity.com).

Bidding forms, specifications and all necessary information may be obtained from the following website:  
<http://leaguecity.com/bids.aspx>.

The City of League City reserves the right to reject any and all bids, to waive irregularities, and to accept the bid deemed the most advantageous to the City.

**Deadline for submission of questions is Friday, November 18, 2015 by 5:00 p.m.**

Attachments:  
Attachment I (Hydrant)



## SECTION I – SCOPE OF WORK

**SCOPE:** The City of League City (COLC) seeks competitive bids on Line Repair Materials for the City. The purpose of these specifications is to describe the minimum requirements of the City of League City for the annual materials contract. This contract is intended for routine and continuous usage.

All parts must be new and unused.

Any governmental entity that has an Inter-local Agreement with the COLC shall be allowed to utilize this contract if there is a mutual agreement between the entity and the contractor. Any usage by any entity from this contract shall be between successful supplier and the individual entity and shall not affect the award of this bid.

**REQUIREMENTS:** Any variance in any item must be specified clearly under the Exceptions to Bidder's Proposal by Bidder in order to have a valid bid. Any exceptions taken may be just cause for disqualification. All unit pricing shall be specified on the attached pricing sheets (pages 4-27 and totals transferred to pages 28 and 29).

**NO LEAD BRASS:** As required in the Federal Government's "Reduction of Lead in Drinking Water Act" all brass valves, fittings, and meter components contained in this bid shall comply with the U.S. Drinking Water Act and the U.S. Environmental Protection Agency requirements.

All fittings and valves shall be manufactured in accordance with the latest revision of AWWA Standard C-800 and as further specified below.

All products supplied in this bid, whose wetted surfaces come into contact with potable (drinking) water shall contain no greater than a weighted average of 0.25 percent lead when used with respect to the wetted surfaces of pipes, pipe fittings, plumbing fittings, and fixtures. These products are considered to be classified as No-lead, Low Lead, Lead Free, Federalloy, and Envirobrass.

All brass fittings and valves shall have the manufacturers name and an identifying mark signifying the fitting or valve to be constructed of a "No-lead" brass alloy.

Any brass part of the fitting or valve not in contact with potable water shall be made of 85-5-5-5 brass alloy.

All brass valves and fittings shall be certified by an ANSI accredited test lab per ANSI/INSF Standard 61, Drinking Water Components – Health Effects, Section 8. The lead content of the wetted components in contact with potable water shall also be verified by an ANSI accredited test lab. If requested an affidavit certifying compliance with the above standards shall be signed and submitted by the manufacturing firm's Quality Assurance or Engineering Manager.

Material certifications to be furnished upon request.



**ORDERING DATA:** The City of League City shall order brass fittings on an "as needed basis". Bidder shall specify on attached sheets any minimum order requirements for price bid. If no minimums are declared, no minimums will be allowed. Minimums may affect the evaluation of the bid.

**WARRANTY:** Bidder shall provide warranty or guarantee offered for product if available.

**ACCEPTANCE AND NONCONFORMING STANDARDS:** All deliveries shall be accepted subject to inspection, count, and/or testing. A waiver on one occasion does not constitute a waiver on future occasions.

**NON-FUNDING CLAUSE:** The City of League City's budget is funded on an October 1<sup>st</sup> to September 30<sup>th</sup> fiscal year basis. Accordingly, the City of League City reserves the right to terminate this contract by giving Bidder thirty (30) days written notice, without liability to the City, in the event that funding for this contract is discontinued or is no longer available.





## SECTION II – MATERIAL SPECIFICATIONS

### Section 1: Water System Material

- A. Water Pipe: All pipe shall be made from PVC components or polyethylene as defined and described in ASTM D-1784 and AWWA C900-81. As per League City specifications class (150) C-900 pipe is required for six inch (6") through twelve inch (12") diameter pipe and schedule 40 pipe is required for one-half inch (1/2") through four inch (4") pipe. All pipe shall be in twenty foot (20') sections in the following sizes unless otherwise specified by vendor.

| Description                       | Estimated Quantity | Unit Price | Extended Price |
|-----------------------------------|--------------------|------------|----------------|
| 1/2" SCH 40                       | 100                | .21        | 21.00          |
| 3/4" SCH 40                       | 100                | .31        | 31.00          |
| 1" SCH 40                         | 100                | .35        | 35.00          |
| 2" SCH 40                         | 200                | .80        | 160.00         |
| 3" SCH 40                         | 200                | 1.63       | 326.00         |
| 4" SCH 40                         | 600                | 2.38       | 1428.00        |
| 4" C900                           | 400                | 1.90       | 760.00         |
| 6" C900                           | 200                | 3.50       | 700.00         |
| 8" C900                           | 500                | 6.18       | 3090.00        |
| 10" C900                          | 100                | 10.52      | 1052.00        |
| 12" C900                          | 100                | 13.20      | 1320.00        |
| 3/4" Black Polyethylene 200 psi   | 500                | .19        | 95.00          |
| 1" Black Polyethylene 200 psi     | 500                | .29        | 145.00         |
| 1 1/2" Black Polyethylene 200 psi | 400                | .61        | 244.00         |
| 2" Black Polyethylene 200 psi     | 200                | .90        | 180.00         |
| Section 1A Sub-Total              |                    |            | 9587.00        |

- B. Fire Hydrants: The operating nut shall be bronze (ASTM B-62) non-rising pentagonal in shape, measuring 1 1/2" from point to flat. Pentagon shall have a depth of at least 1 1/4". The hold down nut shall incorporate a resilient weather seal protecting the operating mechanism from the elements. There shall be a clear embossed arrow near the operating nut indicating the direction of opening which shall be counterclockwise.

A lubrication chamber shall be provided, sealed top and bottom with "O" rings and filled with a non-toxic lubricant which shall remain fluid through a temperature range of -60 degrees to +150 degrees. The design shall be such that the thrust collar and the threaded operating parts are automatically lubricated each time the hydrant is cycled. There shall not be less than two (2) "O" rings separating the oil reservoir from the water way, and that portion of the stem contacting these "O" rings shall be sleeved with bronze. An anti-friction device shall be in place above the thrust collar to further minimize operating torque.

The hydrant bonnet shall be attached to the upper barrel by not less than eight bolts and nuts, utilizing a flat rubber gasket as a pressure seal.

Hydrants shall be "three-way", having two (2) 2 1/2" hose nozzles with national standard threads and one (1) pumper nozzle measuring 4 1/2" inside diameter with national standard threads conforming to the City of League City's standard. Nozzles shall thread counterclockwise into hydrant barrel utilizing "O" ring pressure seals. A suitable nozzle lock shall be utilized.



Hydrants shall be "traffic-model" having upper and lower barrels joined approximately two inches (2") above the ground line by a separate and breakable "swivel" flange providing 360 degrees rotation of upper barrel for proper nozzle facing. This flange shall employ not less than eight (8) bolts. The pressure seal between the barrels shall be a cloth inserted flat rubber gasket. The ground line, which shall be clearly embossed on the lower barrel, shall not be less than eighteen inches (18") from the centerline of the lowest nozzle.

The stem shall be two-piece, not less than 1 1/4" diameter (excluding threaded or machined areas) and shall be connected by a breakable stem coupling near the ground line flange which shall be of metal similar to the stem to minimize galvanic action at this point. Screws, pins, bolts, or fasteners used in conjunction with the stem coupling shall be stainless steel. The weakened portion of the coupling shall be below the coupling pins eliminating failure due to excessive torque.

Hydrant show and barrel casings shall be fabricated of ASTM A-126, Class B gray iron or ductile iron ASTM A-536, but no combination thereof, assuring uniform strength of all cast diameter of the hydrant barrels shall be no less than seven inches (7").

Main valves shall be "compression type", closing with pressure and shall not be less than 5 1/4" diameter. Composition of the main valve shall be molded rubber of neoprene having a durometer hardness of 90 +/-5 and shall not be less than one inch (1") thick.

Hydrants shall be equipped with drain valves which drain the barrel when the hydrant is closed and seal shut when the hydrant is opened. These drain valves shall be an integral part of the one-piece bronze upper valve plate. They shall operate without utilizing springs, toggles, rubes, levers, or other intricate synchronizing mechanism.

Fire hydrants shall conform to requirements and tests of AWWA Standard for dry barrel fire hydrants C 502-80, or latest revision thereof, pertaining to the design, component materials, construction and manufacture except as modified or supplemented hereinafter.

The operating nut shall be non-rising, pentagonal shape measuring 1-1/2" from point of opposite flat. Pentagon shall have a depth of at least 1-1/4".

A weather cap shall be affixed which conceals the hold down nut and on which is embossed an arrow indicating the opening direction. The direction of opening shall be counterclockwise.

A lubrication reservoir shall be provided, sealed top and bottom by "O" rings and filled with a viscous, non-toxic lubricant. The design shall be such that the bearing surfaces and threaded parts are automatically lubricated when the hydrant is operated. There shall be not less than two "O" rings separating the waterways from the oil reservoir and that portion of the stem making this seal shall be sleeved with bronze. An anti-friction washer shall be in place above the thrust collar to minimize operation torque.

The bonnet shall be attached to the upper barrel by not less than eight bolts utilizing a cloth impregnated rubber gasket as a pressure seal.

Hydrants shall be three-way, having two 2-1/2" hose nozzles being right hand National Standard Thread and one 5" Storz quick connection pumper nozzle. Nozzles shall thread counter-clockwise into barrel with "O" ring pressure seals. Storz connection shall be install per manufactures recommendations and have matching cap with cable tether.





Hydrants shall be traffic model having upper and lower barrels joined approximately 2" above the final grade line by a separate and breakable swivel flange providing 360 degree rotation of the upper barrel. This flange shall include a minimum of eight bolts. The pressure seal between the barrels shall be cloth impregnated rubber gasket, an "O" ring is not acceptable. The ground line shall not be less than eighteen inches below the centerline of the lowest nozzle and shall be clearly embossed on the lower barrel. A breakable stem coupling shall join the two-piece stem adjacent to the ground-line flange and shall be of similar metal. Screws, pins, fasteners or bolts used in the coupling shall be stainless steel. The weakened portion of the stem coupling shall be below the coupling pins.

Upper and lower barrels shall be fabricated of cast iron so as to minimize the possibility of shoe damage upon traffic impact.

Main valves shall be compression type, closing with the pressure, and shall be not less than 5 1/4" in diameter. Composition of the main valve shall be rubber or neoprene having a durometer hardness of 90 + 5 and shall be not less than 1" thick.

Hydrant shall be equipped with drain valves which drain the barrel when the hydrant is closed and sealed shut when the hydrant is in the open position. These drain valves shall be an integral part of the upper valve plate and shall operate without employing springs, tubes, levers, toggles or other intricate mechanism. A gravel bed around the weep holes is required; see COLC "Fire Hydrant and Valve Detail" for additional information (Attachment I).

The upper valve plate, seat ring and drain ring (shoe bushing) must be bronze and work in conjunction to form an all-bronze drain-way. Drain holes drilled in the shoe must be bronze lined.

Two drain openings are required; the bronze seat ring must thread into a bronze drain ring or shoe bushing providing a bronze to bronze connection. Seat ring seals shall be "O" ring type. Zinc content of bronze parts shall not exceed 16%.

The 6" shoe connection shall be an approved mechanically restrained joint and have ample blocking pads for sturdy setting and concrete blocking. A minimum of six bolts is required to fasten the shoe to the lower barrel.

The interior of the shoe, including the lower valve plate and cap nut shall have a protective epoxy coating of at least 4 mils. If cap nut is utilized, it must be locked in place with a stainless steel lock washer or similar non-corrosive device.

Fire hydrant shall be those types and models meeting the above criteria and installation shall be in accordance with manufacturer's recommendation and as shown in the "Standard Details".

All above ground parts of the fire hydrant shall be field coated after installation with an approved rust inhibiting paint. The body parts, bonnet, and caps shall be Carmine Red in color.

**NOTE: FAILURE TO COMPLY WITH ANY OF THESE REQUIREMENTS MAY RESULT IN REJECTION OF THE PROPOSED HYDRANTS.**

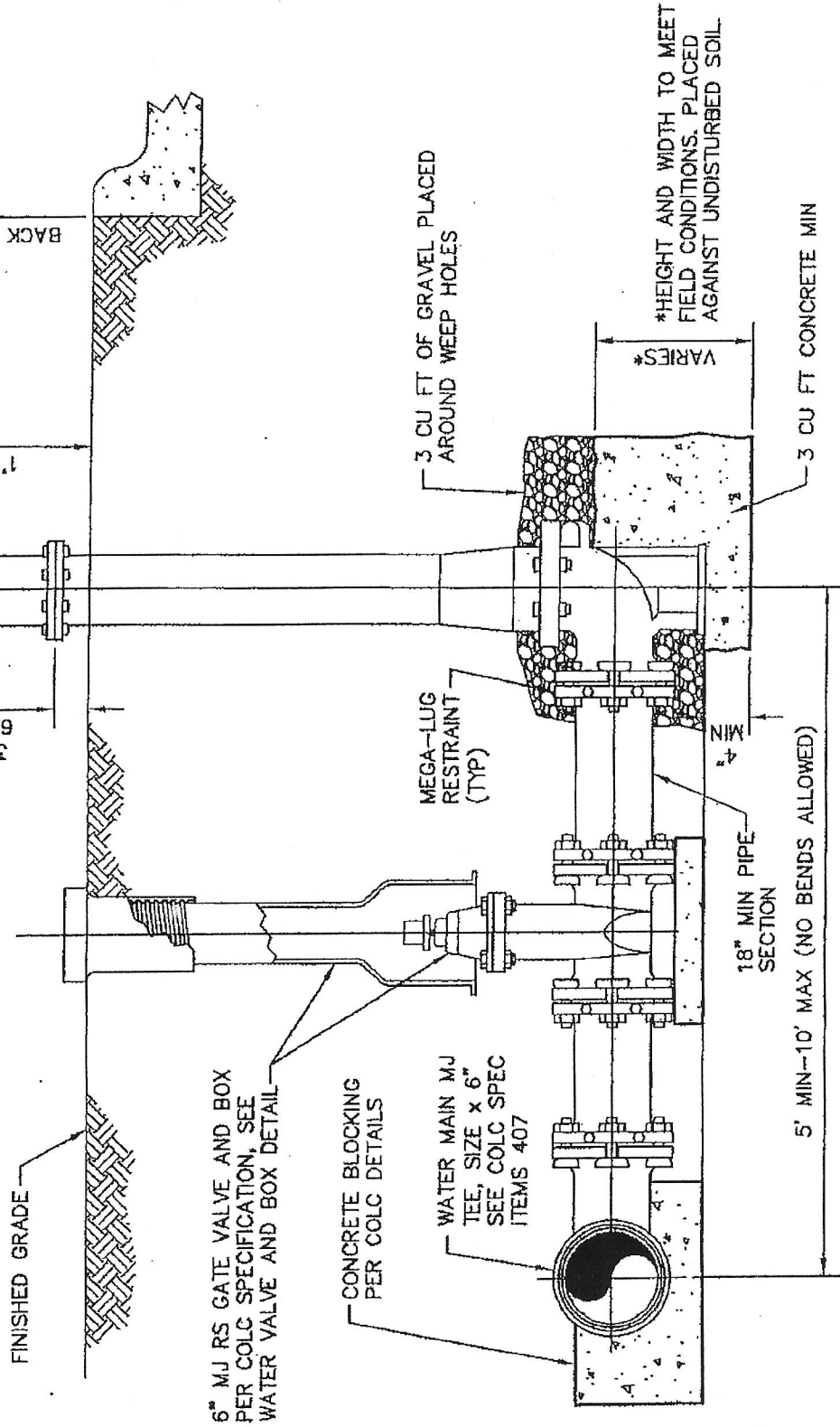
# ATTACHMENT I

④

AMERICAN DARLING OR APPROVED  
EQUAL MJ FIRE HYDRANT PER COLC  
SPEC ITEM 407.9, 4' MIN BURY

## NOTES:

1. OIL SHALL BE PLACED IN HYDRANT AT THE TIME OF INSTALLATION.
2. PUMPER NOZZLE SHALL BE EQUIPPED WITH STORZ 5" HOSE CONNECTOR WITH CAP AND FACE ROADWAY.
3. VALVE BONNET TO BE ASSEMBLED WITH STAINLESS STEEL BOLTS.
4. WHEN APPROVED BY CITY, A MJ SWIVEL TEE MAY BE SUBSTITUTED FOR THE ALL BELL MJ TEE.



## FIRE HYDRANT AND VALVE DETAIL

4-2012

NTS





Sect 1B (cont.) American Darling B-84-B

Manufacturer Type

| Description            | Estimated Quantity | Unit Price | Extended Price |
|------------------------|--------------------|------------|----------------|
| 4 foot                 | 3                  | 1823.00    | 5496.00        |
| 5 foot                 | 3                  | 1895.00    | 5685.00        |
| Extension Kits: 6 inch | 20                 | 130.00     | 2600.00        |
| 1 foot                 | 20                 | 151.00     | 3020.00        |
| 2 foot                 | 20                 | 195.00     | 3900.00        |
| 3 foot                 | 2                  | 245.00     | 490.00         |
| 4 foot                 | 2                  | 268.00     | 536.00         |
| 5 foot                 | 2                  | 420.00     | 840.00         |
| Flange Kits            | 3                  | 83.00      | 249.00         |
| Bonnet Repair Kits     | 10                 | 34.00      | 340.00         |
| Fire Hydrant Wrenches  | 15                 | 17.50      | 262.50         |
| Section 1B Sub-Total   |                    |            | 23418.50       |

- C. Fittings: All fittings described in the specifications shall comply with ANSI/AWWA C153/A21.53 for MJ fitting, ANSI/AWWA C110/A21.10 and C115/A21.15 for flanged fittings and ASTM D3034 for PVC products. All brass products must meet AWWA C800-89 or ASTM B-62 standards.

| Description                    | Estimated Quantity | Unit Price | Extended Price |
|--------------------------------|--------------------|------------|----------------|
| <b>ELBOW/BENDS 22.5 DEGREE</b> |                    |            |                |
| 4" C-900 MJ                    | 3                  | 38.00      | 114.00         |
| 6" C-900 MJ                    | 3                  | 56.00      | 168.00         |
| 8" C-900 MJ                    | 3                  | 78.00      | 234.00         |
| <b>ELBOW/BENDS 45 DEGREE</b>   |                    |            |                |
| 3/4" Sch 40 Glue Joint         | 10                 | .33        | 3.30           |
| 1" Sch 40 Glue Joint           | 10                 | .39        | 3.90           |
| 2" Sch 40 Glue Joint           | 10                 | .89        | 8.90           |
| 3" Sch 40 Glue Joint           | 10                 | 3.60       | 36.00          |
| 4" Sch 40 Glue Joint           | 10                 | 6.50       | 65.00          |
| 6" CI, MJ w/ acc pak           | 5                  | 59.00      | 295.00         |
| 8" CI, MJ w/ acc pak           | 5                  | 79.00      | 395.00         |
| 10" CI, MJ w/ acc pak          | 2                  | 114.00     | 228.00         |
| 12" CI, MJ w/ acc pak          | 2                  | 152.00     | 304.00         |
| <b>ELBOW/BENDS 90 DEGREE</b>   |                    |            |                |
| 3/4" Sch 40 Glue Joint         | 30                 | .15        | 4.50           |
| 1" Sch 40 Glue Joint           | 10                 | .26        | 2.60           |
| 2" Sch 40 Glue Joint           | 10                 | .76        | 7.60           |
| 3" Sch 40 Glue Joint           | 10                 | 2.80       | 28.00          |
| 4" Sch 40 Glue Joint           | 10                 | 5.00       | 50.00          |
| 6" CI, MJ w/ acc pak           | 5                  | 68.00      | 340.00         |
| 8" CI, MJ w/ acc pak           | 5                  | 91.00      | 455.00         |
| 10" CI, MJ w/ acc pak          | 2                  | 140.00     | 280.00         |
| 12" CI, MJ w/ acc pak          | 2                  | 178.00     | 356.00         |



| Description                                | Estimated Quantity | Unit Price | Extended Price |
|--|--------------------|------------|----------------|
| <b>COUPLINGS</b>                           |                    |            |                |
| 3/4" Sch 40 Glue Joint                     | 10                 | .12        | 1.20           |
| 1" Sch 40 Glue Joint                       | 10                 | .21        | 2.10           |
| 2" Sch 40 Glue Joint                       | 10                 | .45        | 4.50           |
| 3" Sch 40 Glue Joint                       | 5                  | 1.60       | 8.00           |
| 4" Sch 40 Glue Joint                       | 10                 | 2.30       | 23.00          |
| <b>COMPRESSION COUPLINGS Sch 40</b>        |                    |            |                |
| 3/4" x 3/4"                                | 10                 | 2.60       | 26.00          |
| 1" x 1"                                    | 10                 | 3.30       | 33.00          |
| 2" x 2"                                    | 10                 | 6.80       | 68.00          |
| 3" x 3"                                    | 10                 | 16.00      | 160.00         |
| 4" x 4"                                    | 10                 | 27.90      | 279.00         |
| <b>TRANSITION COUPLINGS, RUBBER</b>        |                    |            |                |
| 2" CI x PVC                                | 10                 | 1.90       | 19.00          |
| 3" CI x PVC                                | 10                 | 2.60       | 26.00          |
| 4" CI x PVC                                | 10                 | 3.30       | 33.00          |
| 4" CI x AC                                 | 10                 | 3.50       | 35.00          |
| 6" CI x PVC                                | 10                 | 7.00       | 70.00          |
| 6" CI x AC                                 | 10                 | 7.60       | 76.00          |
| 8" CI x PVC                                | 10                 | 10.80      | 108.00         |
| 8" CI x AC                                 | 10                 | 11.70      | 117.00         |
| 10" CI x PVC                               | 10                 | 16.20      | 162.00         |
| 10" CI x AC                                | 10                 | 16.20      | 162.00         |
| 12" CI x PVC                               | 10                 | 19.00      | 190.00         |
| 12" CI x AC                                | 10                 | 19.00      | 190.00         |
| <b>TOP BOLT COUPLING 262 OR EQUIVALENT</b> |                    |            |                |
| 2"   | 6                  | 77.00      | 462.00         |
| 3"   | 6                  | 101.00     | 606.00         |
| 4" 4.25-5.63                               | 6                  | 130.00     | 780.00         |
| 4" over size                               | 6                  | 130.00     | 780.00         |
| 6" 6.42-7.68                               | 20                 | 171.00     | 3420.00        |
| 8" 8.54-9.84                               | 20                 | 194.00     | 3880.00        |
| 10" 10.7-12.0                              | 4                  | 247.00     | 988.00         |
| 10" 10.96-12.66                            | 20                 | 269.00     | 5380.00        |
| 12" 12.40-13.66                            | 10                 | 302.00     | 3020.00        |
| 12" over size 13.15-14.41                  | 20                 | 360.00     | 7200.00        |
| <b>TEE</b>                                 |                    |            |                |
| 3/4" Sch 40 Glue Joint                     | 10                 | .19        | 1.90           |
| 1" Sch 40 Glue Joint                       | 10                 | .35        | 3.50           |
| 2" Sch 40 Glue Joint                       | 10                 | .95        | 9.50           |
| 2" CI, MJ w/ acc pak                       | 20                 | 65.90      | 1318.00        |
| 3" Sch 40 Glue Joint                       | 10                 | 4.00       | 40.00          |
| 4" Sch 40 Glue Joint                       | 10                 | 7.40       | 74.00          |
| 6" x 6" x 6" CI MJ w/ acc pak              | 10                 | 99.00      | 990.00         |





| Description                    | Estimated Quantity | Unit Price | Extended Price |
|--------------------------------|--------------------|------------|----------------|
| <b>TEE (cont. from pg. 8)</b>  |                    |            |                |
| 6" x 8" x 8" CI MJ w/acc pak   | 10                 | 118.00     | 1180.00        |
| 8" x 8" x 8" CI MJ w/acc pak   | 10                 | 136.00     | 1360.00        |
| 10" x 10" x 6" CI MJ w/acc pak | 10                 | 152.00     | 1520.00        |
| 10" x 10" x 8" CI MJ w/acc pak | 10                 | 172.00     | 1720.00        |
| 12" x 12" x 6" CI MJ w/acc pak | 5                  | 182.00     | 910.00         |
| 12" x 12" x 8" CI MJ w/acc pak | 5                  | 204.00     | 1020.00        |
| <b>ADAPTOR, MALE</b>           |                    |            |                |
| 1/2" Sch 40 Glue Joint         | 15                 | .12        | 1.80           |
| 3/4" Sch 40 Glue Joint         | 15                 | .14        | 2.10           |
| 1" Sch 40 Glue Joint           | 15                 | .23        | 3.45           |
| 2" Sch 40 Glue Joint           | 15                 | .49        | 7.35           |
| 3" Sch 40 Glue Joint           | 15                 | 2.10       | 31.50          |
| 4" Sch 40 Glue Joint           | 10                 | 2.70       | 27.00          |
| <b>ADAPTOR, MALE, THREADED</b> |                    |            |                |
| 4" Sch 40                      | 10                 | 2.70       | 27.00          |
| 6" Sch 40                      | 10                 | 7.00       | 70.00          |
| 8" Sch 40                      | 10                 | 31.00      | 310.00         |
| <b>ADAPTOR, FEMALE</b>         |                    |            |                |
| 1/2" Sch 40 Glue Joint         | 10                 | .15        | 1.50           |
| 3/4" Sch 40 Glue Joint         | 30                 | .19        | 5.70           |
| 1" Sch 40 Glue Joint           | 10                 | .22        | 2.20           |
| 2" Sch 40 Glue Joint           | 10                 | .49        | 4.90           |
| 3" Sch 40 Glue Joint           | 10                 | 1.70       | 17.00          |
| 4" Sch 40 Glue Joint           | 10                 | 2.80       | 28.00          |
| 6" Sch 40 Glue Joint           | 10                 | 10.20      | 102.00         |
| <b>CAP, FEMALE THREADED</b>    |                    |            |                |
| 2" Brass                       | 10                 | 11.40      | 114.00         |
| 2" Galvanized                  | 10                 | 2.30       | 23.00          |
| 4" Sch 40                      | 10                 | 3.10       | 31.00          |
| <b>PLUG, CAST IRON</b>         |                    |            |                |
| 4" MJ w/ acc pak               | 10                 | 12.00      | 120.00         |
| 4" x 2" Center MJ w/ACC Packs  | 10                 | 22.00      | 220.00         |
| 4" Push On                     | 10                 | 15.00      | 150.00         |
| 6" MJ w/ acc pak               | 10                 | 23.00      | 230.00         |
| 6" Push On                     | 10                 | 25.00      | 250.00         |
| 8" MJ w/ acc pak               | 5                  | 35.00      | 175.00         |
| 8" Push On                     | 5                  | 35.00      | 175.00         |
| 10" MJ w/ acc pak              | 5                  | 62.00      | 310.00         |
| 12" MJ w/ acc pak              | 2                  | 61.00      | 122.00         |
| 6" x 2" center, MJ w/ acc pak  | 10                 | 34.00      | 340.00         |
| 8" x 2" center, MJ w/ acc pak  | 5                  | 46.00      | 230.00         |
| 10" x 2" center, MJ w/ acc pak | 5                  | 71.00      | 405.00         |
| 12" x 2" center, MJ w/ acc pak | 2                  | 71.00      | 142.00         |

355



| Description  | Estimated Quantity | Unit Price | Extended Price |
|--|--------------------|------------|----------------|
| <b>CROSS</b>   |                    |            |                |
| 4" X 4" Sch 40   | 10                 | 8.60       | 86             |
| 4" x 4" CI, MJ w/ acc pak                                  | 10                 | 110.00     | 1100           |
| 6" x 6" Sch 40   | 10                 | 48.80      | 488.00         |
| 6" x 6" CI, MJ w/ acc pak                                  | 10                 | 141.00     | 1410.00        |
| 8" x 8" Sch 40   | 10                 | 78.90      | 789.00         |
| 8" x 8" CI, MJ w/ acc pak                                  | 10                 | 155.00     | 1550.00        |
| 10" x 10" Sch 40   | 10                 | 177.80     | 1778.00        |
| 10" x 10" CI, MJ w/ acc pak                                | 10                 | 234.00     | 2340.00        |
| 12" x 12" Sch 40   | 10                 | 271.00     | 2710.00        |
| 12" x 12" CI, MJ w/ acc pak                                | 10                 | 361.00     | 3610.00        |
| <b>REDUCERS</b>  |                    |            |                |
| 2" x 1" Sch 40 Glue Joint                                  | 10                 | 1.70       | 17.00          |
| 4" x 2" Sch 40 Glue Joint                                  | 10                 | 10.50      | 105.00         |
| 6" x 4" Sch 40 Glue Joint                                  | 10                 | 12.40      | 124.00         |
| 6" x 4" CI, MJ w/ acc pak                                  | 10                 | 46.00      | 460.00         |
| 8" x 6" CI, MJ w/ acc pak                                  | 5                  | 62.00      | 310.00         |
| 10" x 8" CI, MJ w/ acc pak                                 | 5                  | 85.00      | 425.00         |
| 12" x 10" CI, MJ w/ acc pak                                | 2                  | 109.00     | 218.00         |
| <b>CORPORATION STOPS; MIP x PJ x CTS</b>                   |                    |            |                |
| 3/4" x 3/4" x 3/4" (F1100-3)                               | 10                 | 22.90      | 229.00         |
| 1" x 1" x 1" (F1100-4)                                     | 10                 | 34.70      | 347.00         |
| 2" x 2" x 2" (FB1100-7)                                    | 10                 | 165.70     | 1657.00        |
| <b>CORPORATION STOPS; CC x CTS COMP</b>                    |                    |            |                |
| 3/4" x 3/4" x 3/4" (F1000-3)                               | 10                 | 22.90      | 229.00         |
| 1" x 1" x 1" (F1000-4)                                     | 10                 | 34.70      | 347.00         |
| <b>CORPORATION STOPS; CC TAPER x PJ x CTS</b>              |                    |            |                |
| 2" x 2" x 2"   | 10                 | 165.70     | 1657.00        |
| <b>CORPORATION STOPS FITTING ADAPTING FLAIR NTO TO CTS</b> |                    |            |                |
| 3/4" (C04-33)  | 20                 | 11.90      | 238.00         |
| 1" x 3/4" (C04-54)   | 20                 | 14.90      | 298.00         |
| 1 1/4" x 1" (C04-54)                                       | 20                 | 18.90      | 378.00         |
| 1" (C04-44)  | 20                 | 17.60      | 352.00         |
| 1 1/4" (C04-55)  | 20                 | 29.00      | 580.00         |
| 1 1/2" (C04-66)  | 20                 | 40.70      | 814.00         |
| 2" (C04-77)  | 20                 | 63.00      | 1260.00        |





| Description  | Estimated Quantity | Unit Price | Extended Price |
|--|--------------------|------------|----------------|
| <b>CURB STOPS; BALL VALVES; FIP x FIP</b>  |                    |            |                |
| 2" curbstop x CTS PJ   | 10                 | 191.00     | 1910.00        |
| 2" curbstop for cast iron box  | 10                 | 217.00     | 2170.00        |
| 1 1/2" curbstop for cast iron box  | 10                 | 144.00     | 1440.00        |
| 3/4 " curbstop for cast iron box single  | 10                 | 47.00      | 470.00         |
| 3/4 " curbstop for cast iron box double  | 10                 | 25.80      | 258.00         |
| 3/4 CI   | 35                 |            |                |
| <b>CURB STOPS; BALL VALVES; FIP x FIP (cont. from pg. 10)</b>                      |                    |            |                |
| 5/8" x 3/4" x 3/4" x 3 3/4" (B11-233 WR)   | 15                 | 25.80      | 387.00         |
| 3/4" x 3/4" x 3/4" x 3 3/8" (B11-333WR)  | 10                 | 38.30      | 383.00         |
| 3/4" x 1" x 1" x 3 11/16" (B11-344WR)  | 10                 | 42.50      | 425.00         |
| 1" x 1" x 1" x 3 13/16" (B11-444WR)  | 10                 | 58.40      | 584.00         |
| <b>STRAIGHT BALL VALVE; PJ x CTS x MJ</b>  |                    |            |                |
| 1" x 1" (BF43-777W) BF43-444WNL  | 5                  | 71.60      | 358.00         |
| 2" x 2" (FG83-777W)  | 5                  | 216.00     | 1080.00        |
| <b>STRAIGHT METER COUPLING METER TRAILS</b>  |                    |            |                |
| 5/8" x 3/4" x 2.5" (C38-23-2.5)  | 20                 | 6.80       | 136.00         |
| 3/4" x 3/4" x 3" (C38-23-3)  | 20                 | 8.30       | 166.00         |
| 1" x 2.625" (C38-44-2.625)   | 20                 | 10.50      | 210.00         |
| <b>PACK JOINT COUPLINGS</b>  |                    |            |                |
| 1" x 3/4" x 3/4" wye (Y66-243)   | 10                 | 54.00      | 540.00         |
| 1" x 1" x 1" tee (T444-444)  | 10                 | 33.20      | 332.00         |
| <b>PACK JOINT EXPANSION COUPLING EXPANSION WHEEL ASSEMBLY FOR 1" CAST IRON BOX</b> |                    |            |                |
| 3/4" standard (EC-23)  | 10                 | 14.00      | 140.00         |
| <b>PACK JOINT COUPLING PVC x CTS</b>   |                    |            |                |
| 2" x 2" (C74-77) C47-77NL  | 10                 | 78.80      | 788.00         |
| <b>PACK JOINT COUPLINGS MIP x CTS</b>  |                    |            |                |
| 3/4" x 3/4" (C84-33)   | 15                 | 10.50      | 157.50         |
| 3/4" x 1" (C84-34)   | 15                 | 11.60      | 174.00         |
| 1" x 3/4" (C84-43)   | 15                 | 11.50      | 172.50         |
| 1" x 1" (C84-44)   | 15                 | 12.40      | 186.00         |
| 2" x 2" (C84-77)   | 15                 | 49.80      | 747.00         |

4293

231.50



| Description  | Estimated Quantity | Unit Price | Extended Price |
|--|--------------------|------------|----------------|
| <b>PACK JOINT COUPLINGS MIP x PVC</b>                                |                    |            |                |
| 3/4" x 3/4" (C87-33)   | 10                 | 13.90      | 139.00         |
| 3/4" x 1" (C87-34)   | 10                 | 20.50      | 205.00         |
| 1" x 1" (C87-44)   | 10                 | 21.70      | 217.00         |
| 2" x 2" (C87-77)   | 10                 | 62.00      | 620.00         |
| <b>PACK JOINT COUPLINGS CTS x CTS</b>                                |                    |            |                |
| 3/4" x 1" (C44-34)   | 40                 | 14.90      | 596.00         |
| 3/4" x 3/4" (C44-33)   | 40                 | 12.80      | 512.00         |
| 1" x 1" (C44-44)   | 10                 | 14.60      | 146.00         |
| 1" x 1 1/4" (C44-45)   | 10                 | 21.20      | 212.00         |
| 1 1/4" x 1 1/4" (C44-55)   | 10                 | 24.80      | 248.00         |
| 1 1/2" x 1 1/2" (C44-66)   | 10                 | 49.00      | 490.00         |
| 2" x 2" (C44-77)   | 10                 | 66.20      | 662.00         |
| <b>PACK JOINT COUPLINGS CTS X CTS 90 DEGREE BEND BRASS FITTING</b>   |                    |            |                |
| 3/4" x 3/4" (L44-33)   | 20                 | 16.50      | 330.00         |
| 3/4" x 1" (L44-34)   | 20                 | 18.60      | 372.00         |
| 1" x 1" (L44-44)   | 20                 | 21.20      | 424.00         |
| 1 1/4" x 1 1/4" (L44-55)   | 20                 | 37.60      | 752.00         |
| 1 1/2" x 1 1/2" (L44-66)   | 20                 | 68.30      | 1366.00        |
| 2" x 2" (L44-77)   | 20                 | 138.00     | 2760.00        |
| <b>PACK JOINT COUPLINGS CTX X CTS (WYE'S PART # Y44-243-Y68-337)</b> |                    |            |                |
| 1" x 3/4" (Y44-243)  | 20                 | 26.00      | 520.00         |
| 1 1/2" x 1" (Y44-264)  | 20                 | 64.00      | 1280.00        |
| 2" x 1" (Y48-274)  | 20                 | 53.00      | 1060.00        |
| <b>PACK JOINT COUPLINGS FIP x PVC</b>                                |                    |            |                |
| 3/4" x 3/4" (C17-33)   | 10                 | 13.80      | 138.00         |
| 3/4" x 1" (C17-34)   | 10                 | 21.80      | 218.00         |
| <b>PACK JOINT COUPLINGS FIP x PE PIPE</b>                            |                    |            |                |
| 3/4" x 3/4" (C16-33)   | 10                 | 13.30      | 133.00         |
| 3/4" x 1" (C16-34)   | 10                 | 18.50      | 185.00         |
| 1" x 1" (C16-44)   | 10                 | 17.00      | 170.00         |
| 2" x 2" (C16-77)   | 10                 | 67.00      | 670.00         |
| <b>PACK JOINT COUPLINGS FIP x CTS</b>                                |                    |            |                |
| 3/4" x 3/4" (C14-33)   | 10                 | 11.00      | 110.00         |
| 1" x 1" (C14-44)   | 10                 | 15.00      | 150.00         |
| 2" x 2" (C14-77)   | 10                 | 52.00      | 520.00         |

450



| Description  | Estimated Quantity | Unit Price | Extended Price |
|--|--------------------|------------|----------------|
| <b>INSERT STIFFNERS</b>  |                    |            |                |
| 3/4" x 1"  | 20                 | 1.00       | 20.00          |
| 3/4" x 3/4"  | 20                 | 1.00       | 20.00          |
| 1" x 1"  | 20                 | 1.05       | 21.00          |
| 1" x 1 1/4"  | 20                 | 1.30       | 26.00          |
| 1 1/2" x 1 1/2"  | 20                 | 1.45       | 29.00          |
| 2" x 2"  | 20                 | 1.45       | 29.00          |
| <b>PIPE RESTRANS C-900, DUCT IRON, A/C WATER AND SEWER LINES</b> |                    |            |                |
| 4"   | 20                 | 20.70      | 414.00         |
| 6"   | 20                 | 25.90      | 518.00         |
| 8"   | 20                 | 35.00      | 700.00         |
| 10"  | 20                 | 60.00      | 1200.00        |
| 12"  | 20                 | 63.90      | 1278.00        |
| <b>PJ COUPLINGS; IP x PVC; PJ BOTH ENDS</b>                      |                    |            |                |
| 3/4" x 3/4" (C57-33)   | 10                 | 16.60      | 166.00         |
| <b>SLEEVES, CI, MJ w/ acc pak</b>                                |                    |            |                |
| 2" x 7" Short  | 10                 | 43.00      | 430.00         |
| 2" x 12" Long  | 10                 | 64.00      | 640.00         |
| 4" x 7" Short  | 10                 | 33.00      | 330.00         |
| 4" x 12" Long  | 10                 | 40.00      | 400.00         |
| 6" x 7" Short  | 10                 | 53.00      | 530.00         |
| 6" x 12" Long  | 10                 | 63.00      | 630.00         |
| 8" x 7" Short  | 10                 | 65.00      | 650.00         |
| 8" x 12" Long  | 10                 | 92.00      | 920.00         |
| 10" x 12" Long   | 10                 | 109.00     | 1090.00        |
| 12" x 12" Long   | 10                 | 118.00     | 1180.00        |
| <b>REPAIR COUPLINGS C-900</b>                                    |                    |            |                |
| 6" x 7"  | 10                 | 28.80      | 288.00         |
| 6" x 12"   | 10                 | 28.80      | 288.00         |
| 8" x 7"  | 10                 | 66.80      | 668.00         |
| 8" x 12"   | 10                 | 66.80      | 668.00         |
| 10" x 12"  | 10                 | 132.00     | 1320.00        |
| 12" x 12"  | 10                 | 193.00     | 1930.00        |
| <b>GASKETS - RUBBER YOKE</b>                                     |                    |            |                |
| 3/4" iron box (GT 118)   | 500                | .21        | 105.00         |
| 1" iron box (GT123)  | 500                | .24        | 120.00         |
| 2 1/2" replacement gaskets                                       | 500                | 4.50       | 2250.00        |
| <b>GASKETS - RUBBER FLANGE GASKET, BLACK</b>                     |                    |            |                |
| 1 1/2" rubber gasket   | 200                | .56        | 112.00         |
| 2"   | 200                | .97        | 194.00         |





| Description   | Estimated Quantity | Unit Price | Extended Price   |
|---|--------------------|------------|------------------|
| <b>FIBER GASKETS, BLACK</b>                                     |                    |            |                  |
| 3/4" x 1/16"  | 1000               | .09        | 90.00            |
| 3/4" x 1/32"  | 1000               | .09        | 90.00            |
| 1" x 1/16"  | 1000               | .10        | 100.00           |
| 1" x 1/32"  | 1000               | .10        | 100.00           |
| <b>PROBING RODS WITH TIPS SS</b>                                |                    |            |                  |
| Probing rod tips  | 100                | 5.50       | 550.00           |
| Gray hand pump  | 10                 | 25.70      | 257.00           |
| 4 feet  | 10                 | 20.80      | 208.00           |
| 5 feet  | 10                 | 22.20      | 220.00           |
| 6 feet  | 10                 | 23.20      | 232.00           |
| <b>HYMAX Flanged Adapter, or equivalent</b>                     |                    |            |                  |
| 1.5"  | 10                 | 92.50      | 925.00           |
| 2"  | 10                 | 92.50      | 925.00           |
| 3"  | 10                 | 131.00     | 1310.00          |
| 4"  | 10                 | 169.00     | 1690.00          |
| 4" O.S.   | 10                 | 169.00     | 1690.00          |
| 6"  | 10                 | 214.00     | 2140.00          |
| 8"  | 10                 | 293.00     | 2930.00          |
| 10"   | 10                 | 496.00     | 4960.00          |
| <b>HYMAX Flanged Adapter, or equivalent (cont. from pg. 13)</b> |                    |            |                  |
| 10" O.S.  | 10                 | 496.00     | 4960.00          |
| 12"   | 10                 | 573.00     | 5730.00          |
| 12" O.S.  | 10                 | 573.00     | 5730.00          |
| <b>MEGALUG FLANGES</b>  |                    |            |                  |
| 4" Megalug flange ACC Pack                                      | 10                 | 20.70      | 207.00           |
| 6" Megalug flange ACC Pack                                      | 10                 | 26.00      | 260.00           |
| 8" Megalug flange ACC Pack                                      | 10                 | 35.00      | 350.00           |
| 10" Megalug flange ACC Pack                                     | 10                 | 60.00      | 600.00           |
| 12" Megalug flange ACC Pack                                     | 10                 | 63.00      | 630.00           |
| 2" Flanged x CTS PJ   | 10                 | 216.00     | 2160.00          |
| 2" Flanged x PVC PJ   | 10                 | 224.00     | 2240.00          |
| 2" Flanged x FIP  | 10                 | 192.00     | 1920.00          |
| 2" FIP x CTS PJ   | 10                 | 191.00     | 1910.00          |
| <b>Section 1C Sub-Total</b>                                     |                    |            | <b>162930.00</b> |





- D. Service Saddles: Services saddles will be single bad, epoxy coated (12 mils) with stainless steel band and bolts. Body will be high strength ductile iron per ASTM A536. Threads should be CC per AWWA C800 or standard female iron pipe or BSP. Band will be two inch (2") minimum width. Bolts will be 5/8" NC threaded bolts of 18-8 gauge stainless steel. Welds shall be corrosion resistant. Gasket to be Buna-N rubber per ASTM D2000. Nuts and washers should be 18-8 type 304 stainless steel with fluorocarbon coating (Ford FC101 or equal).

| Description          | Estimated Quantity | Unit Price | Extended Price |
|----------------------|--------------------|------------|----------------|
| 2" x 3/4"            | 5                  | 18.80      | 94.00          |
| 2" x 1"              | 5                  | 18.80      | 94.00          |
| 3" x 3/4"            | 5                  | 19.00      | 95.00          |
| 3" x 1"              | 5                  | 19.00      | 95.00          |
| 4" x 3/4"            | 10                 | 20.40      | 204.00         |
| 4" x 1"              | 10                 | 20.40      | 204.00         |
| 6" x 3/4"            | 5                  | 23.60      | 118.00         |
| 6" x 1"              | 5                  | 23.60      | 118.00         |
| 6" x 2"              | 5                  | 27.70      | 138.50         |
| 8" x 3/4"            | 5                  | 28.00      | 140.00         |
| 8" x 1"              | 5                  | 28.00      | 140.00         |
| 8" x 2"              | 5                  | 36.60      | 183.00         |
| 10" x 3/4"           | 5                  | 31.10      | 155.50         |
| 10" x 1"             | 5                  | 31.10      | 155.50         |
| 10" x 2"             | 5                  | 38.00      | 190.00         |
| 12" x 3/4"           | 5                  | 36.00      | 180.00         |
| 12" x 1"             | 5                  | 36.00      | 180.00         |
| 12" x 2"             | 5                  | 44.20      | 221.00         |
| Section 1D Sub-Total |                    |            | 2705.50        |

- E. Tapping Sleeves: Tapping sleeves should be stainless steel, ASTM A-36, 36,000 psi minimum. Sleeve flange outlet should conform to AWWA C207 Class D-ANSI, 150 lb drilling used for U.S. pipe standards. Bolt holes should straddle pipe center line. Sleeve should have an epoxy coated body suitable in most field applications, rated for 150 psi working pressure. Nuts and bolts standard per ASTM A242 and AWWA C111. Test plug should be 3/4" with square operating head. Gasket to be Buna-N per ASTM D2000 BA508, resistant to water, oil, and hydrocarbon fluids. Maximum 212 degree Fahrenheit continuous service. Sleeves to be used on AC, CI, DI, or PVC pipe (Ford Tapping Sleeve FTS or equivalent).

| Description          | Estimated Quantity | Unit Price | Extended Price |
|----------------------|--------------------|------------|----------------|
| 6" x 6"              | 5                  | 322.00     | 1610.00        |
| 10" x 6"             | 5                  | 336.00     | 1680.00        |
| 10" x 8"             | 5                  | 438.00     | 2190.00        |
| 12" x 6"             | 5                  | 355.00     | 1775.00        |
| 8" x 4"              | 5                  | 299.00     | 1495.00        |
| 8" x 6"              | 5                  | 326.00     | 1630.00        |
| 8" x 8"              | 5                  | 409.00     | 2045.00        |
| 12" x 8"             | 5                  | 452.00     | 2260.00        |
| Section 1E Sub-Total |                    |            | 14685.00       |



- F. Full Circle Clamps: The repair clamp is to have stainless steel single bands type 304 for corrosion resistance, flexibility and strength. Lugs are to be ultra high strength ductile iron (ASTM A-536), with mutually supporting sliding fingers and band locks. These clamps will be used with DI, CI, or PVC piping. FORDESI with grade 30 gasket for A/C pipe or equivalent.

| Description                      | Estimated Quantity | Unit Price | Extended Price |
|----------------------------------|--------------------|------------|----------------|
| 12" x 12" x 13.44-14.20 A/C      | 10                 | 168.00     | 1680.00        |
| 12" x 12" x 13.20-13.50 C-900    | 10                 | 94.00      | 940.00         |
| 12" x 7.5" x 13.44-14.20 A/C     | 10                 | 99.00      | 990.00         |
| 12" x 7.5" x 13.20-13.50 C-900   | 10                 | 59.00      | 590.00         |
| 12" x 15" x 13.20-13.50 A/C      | 10                 | 119.00     | 1190.00        |
| 12" x 7.5" x 12.006-13.02 SCH.40 | 10                 | 56.90      | 569.00         |
| 12" x 7.5" x 12.06-13.20 DI      | 10                 | 58.50      | 585.00         |
| 10" x 12" x 11.24-11.95 A/C      | 10                 | 146.00     | 1460.00        |
| 10" x 12" x 11.10-11.40 C-900    | 10                 | 85.80      | 858.00         |
| 10" x 7.5" x 11.24-11.95 A/C     | 10                 | 83.00      | 830.00         |
| 10" x 7.5" x 11.10-11.40 C-900   | 10                 | 51.90      | 519.00         |
| 10" x 15" x 11.24-11.95 A/C      | 10                 | 162.00     | 1620.00        |
| 8" x 12" x 9.27-9.67 A/C         | 10                 | 74.60      | 746.00         |
| 8" x 7 1/2" x 8.99-9.39 C-900    | 10                 | 42.60      | 426.00         |
| 8" x 7 1/2" x 8.54-8.94 SCH 40   | 10                 | 41.30      | 413.00         |
| 8" x 7 1/2" x 9.27-9.67 A/C      | 10                 | 44.60      | 446.00         |
| 8" x 15" x 9.27-9.67 A/C         | 10                 | 88.00      | 880.00         |
| 6" x 12" x 7.45-7.85 A/C SMOOTH  | 10                 | 75.80      | 758.00         |
| 6" x 12" x 7.05-7.45 A/C ROUGH   | 10                 | 73.70      | 737.00         |
| 6" x 7 1/2" x 6.84-7.24 SCH 40   | 10                 | 45.30      | 453.00         |
| 6" x 7 1/2" x 7.05-7.45 A/C      | 10                 | 46.00      | 460.00         |
| 6" x 15" x 7.45-7.85 A/C SMOOTH  | 10                 | 87.00      | 870.00         |
| 6" x 15" x 7.05-7.45 A/C ROUGH   | 10                 | 85.40      | 854.00         |
| 4" x 7 1/2" x 4.45-4.73 SCH 40   | 10                 | 37.10      | 371.00         |
| 4" x 7 1/2" x 4.95-5.53 A/C      | 10                 | 58.70      | 587.00         |
| 4" x 7 1/2" x 4.95-5.14 C-900    | 10                 | 38.80      | 388.00         |
| 4" x 7 1/2" x 4.95-5.53 A/C      | 10                 | 58.70      | 587.00         |
| 3" x 7 1/2" x 3.13-3.50 SCH 40   | 10                 | 33.00      | 330.00         |
| 3" x 7 1/2" x 3.45-3.70 CI       | 10                 | 33.80      | 338.00         |
| 3" x 7 1/2" x 3.74-4.17 A/C      | 10                 | 56.40      | 564.00         |
| 3" x 15" x 3.74-4.17 A/C         | 10                 | 109.00     | 1090.00        |
| 2" x 7 1/2" x 2.35-2.63 CI       | 25                 | 28.40      | 710.00         |
| 2" x 12" x 2.35-2.63 CI          | 25                 | 50.50      | 1262.50        |
| 1 1/4" x 6" CI                   | 10                 | 27.60      | 276.00         |
| 1 1/2" x 6" PVC                  | 10                 | 28.00      | 280.00         |
| 1" x 3" PVC                      | 10                 | 13.50      | 135.00         |
| 3/4" x 3" PVC                    | 10                 | 12.80      | 128.00         |





| Description                      | Estimated Quantity | Unit Price | Extended Price |
|----------------------------------|--------------------|------------|----------------|
| <b>TAPPED REPAIR CLAMPS</b>      |                    |            |                |
| 4" 4.74-5.14 F1-5.14-7.5-CC3     | 10                 | 56.00      | 560.00         |
| 4" 4.74-5.14 F1-5.14-7.5-CC4     | 10                 | 56.00      | 560.00         |
| 4" 4.95-5.35 F1-5.35-7.5-CC3     | 10                 | 56.00      | 560.00         |
| 4" 4.96-5.35 F1-5.35-7.5-CC4     | 10                 | 56.00      | 560.00         |
| 4" 5.22-5.62 F1-5.62-7.5-CC3     | 10                 | 57.00      | 570.00         |
| 4" 5.22-5.62 F1-5.62-7.5-CC4     | 10                 | 57.00      | 570.00         |
| 6" 5.95-6.35 F1-6.35-7.5-CC3     | 10                 | 57.00      | 570.00         |
| 6" 5.95-6.35 F1-6.35-7.5-CC4     | 10                 | 57.00      | 570.00         |
| 6" 6.56-6.96 F1-6.96-7.5-CC3     | 10                 | 62.00      | 620.00         |
| 6" 6.84-7.24 F1-7.24-7.5-CC3     | 10                 | 63.00      | 630.00         |
| 6" 6.84-7.24 F1-7.24-7.5-CC4     | 10                 | 63.00      | 630.00         |
| 6" 7.05-7.45 F1-7.45-7.5-CC3     | 10                 | 63.00      | 630.00         |
| 6" 7.05-7.45 F1-7.45-7.5-CC4     | 10                 | 63.00      | 630.00         |
| 6" 7.45-7.85 F1-7.85-7.5-CC3     | 10                 | 64.00      | 640.00         |
| 6" 7.45-7.85 F1-7.85-7.5-CC4     | 10                 | 64.00      | 640.00         |
| 8" 7.95-8.35 F1-8.35-7.5-CC3     | 10                 | 52.00      | 520.00         |
| 8" 7.95-8.35 F1-8.35-7.5-CC4     | 10                 | 52.00      | 520.00         |
| 8" 8.54-8.94 F1-8.94-7.5-CC3     | 10                 | 55.00      | 550.00         |
| 8" 8.54-8.94 F1-8.94-7.5-CC4     | 10                 | 55.00      | 550.00         |
| 8" 8.99-9.39 F1-9.39-7.5-CC3     | 10                 | 56.00      | 560.00         |
| 8" 8.99-9.39 F1-9.39-7.5-CC4     | 10                 | 56.00      | 560.00         |
| 8" 9.27-9.67 F1-9.67-7.5-CC3     | 10                 | 57.00      | 570.00         |
| 8" 9.27-9.67 F1-9.67-7.5-CC4     | 10                 | 57.00      | 570.00         |
| 8" 9.70-10.10 F1-10.10-7.5-CC3   | 10                 | 60.00      | 600.00         |
| 8" 9.70-10.10 F1-10.10-7.5-CC4   | 10                 | 60.00      | 600.00         |
| 10" 10.64-11.04 F1-11.04-7.5-CC3 | 5                  | 64.00      | 320.00         |
| 10" 10.64-11.04 F1-11.04-7.5-CC4 | 5                  | 64.00      | 320.00         |
| 10" 11.04-11.44 F1-11.44-7.5-CC3 | 5                  | 65.00      | 325.00         |
| 10" 11.04-11.44 F1-11.44-7.5-CC4 | 5                  | 65.00      | 325.00         |
| 10" 11.34-11.74 F1-11.74-7.5-CC3 | 5                  | 69.00      | 345.00         |
| 10" 11.34-11.74 F1-11.74-7.5-CC4 | 5                  | 69.00      | 345.00         |
| 10" 11.74-12.15 F1-12.15-7.5-CC3 | 5                  | 69.00      | 345.00         |
| 10" 11.75-12.15 F1-12.15-7.5-CC4 | 5                  | 69.00      | 345.00         |
| 12" 12.00-12.40 F1-12.40-7.5-CC3 | 5                  | 71.00      | 355.00         |
| 12" 12.00-12.40 F1-12.40-7.5-CC4 | 5                  | 71.00      | 355.00         |
| 12" 12.62-13.02 F1-13.02-7.5-CC3 | 5                  | 72.00      | 360.00         |
| 12" 12.62-13.02 F1-13.02-7.5-CC4 | 5                  | 72.00      | 360.00         |
| 12" 13.10-13.50 F1-13.50-7.5-CC3 | 5                  | 72.00      | 360.00         |
| 12" 13.10-13.50 F1-13.50-7.5-CC4 | 5                  | 72.00      | 360.00         |
| 12" 13.40-13.80 F1-13.80-7.5-CC3 | 5                  | 74.00      | 370.00         |
| 12" 13.40-13.80 F1-13.80-7.5-CC4 | 5                  | 74.00      | 370.00         |



| Description  | Estimated Quantity | Unit Price | Extended Price |
|--|--------------------|------------|----------------|
| <b>TAPPED REPAIR CLAMPS (cont. from pg. 17)</b>          |                    |            |                |
| 12" 13.70-14.10 FI-14.10-7.5-CC3                         | 5                  | 74.00      | 370.00         |
| 12" 13.70-14.10 FI-14.10-7.5-CC4                         | 5                  | 74.00      | 370.00         |
| 12" 14.00-14.40 FI-14.40-7.5-CC3                         | 5                  | 83.00      | 415.00         |
| 12" 14.00-14.40 FI-14.40-7.5-CC4                         | 5                  | 83.00      | 415.00         |
| <b>COUPLING LEAK CLAMPS FOR SCH-40 COUPLINGS</b>         |                    |            |                |
| 2" 2.38 FCC-2.38   | 5                  | 33.00      | 165.00         |
| 2 ½ 2.88 FCC-2.88  | 5                  | 38.00      | 190.00         |
| 3" 3.50 FCC-3.50   | 5                  | 38.00      | 190.00         |
| 3 ½ 4.00 FCC-4.00  | 5                  | 40.00      | 200.00         |
| 4" 4.50 FCC-4.50   | 5                  | 42.00      | 210.00         |
| 6" 6.63 FCC-6.63   | 5                  | 52.00      | 260.00         |
| 8" 8.63 FCC-8.63   | 5                  | 58.00      | 290.00         |
| <b>BELL JOINT LEAK CLAMPS FOR CAST IRON OR C-900 PVC</b> |                    |            |                |
| 4" 4.80-5.00 FBC-500                                     | 5                  | 74.00      | 370.00         |
| 6" 6.90-7.10 FBC-710                                     | 5                  | 83.00      | 415.00         |
| 8" 9.05-9.30 FBC-930                                     | 5                  | 115.00     | 575.00         |
| 10" 11.10-11.40 FBC-1140                                 | 5                  | 144.00     | 720.00         |
| 12" 13.20-13.50 FBC-1350                                 | 5                  | 156.00     | 780.00         |
| <b>BELL JOINT LEAK CLAMPS FOR STANDARD STEEL SIZE</b>    |                    |            |                |
| 4" 4.50 FBC-450  | 5                  | 77.00      | 385.00         |
| 6" 6.63 FBC-663  | 5                  | 84.00      | 420.00         |
| 8" 8.63 FBC-863  | 5                  | 116.00     | 580.00         |
| 10" 10.75 FBC-1075                                       | 5                  | 145.00     | 725.00         |
| 12" 12.75 FBC-1275                                       | 5                  | 156.00     | 780.00         |
| <b>BOLT EXTENSION KITS FOR BELL CLAMPS</b>               |                    |            |                |
| FBC-450 FBC-863 BEK-1-4                                  | 5                  | 5.00       | 25.00          |
| FBC-930 BEK-2-4  | 5                  | 7.60       | 38.00          |
| FBC-1140 FBC-1275 BEK-2-6                                | 5                  | 10.50      | 52.50          |
| <b>MISC REPAIR CLAMPS</b>                                |                    |            |                |
| 12"x 6" 14.00914.40                                      | 10                 | 61.00      | 610.00         |
| 12"x 6" 14.00914.40                                      | 10                 | 61.00      | 610.00         |
| 24" x 12.5" triple band clamp 25.60-26.80                | 10                 | 459.00     | 4590.00        |
| 26" bell joint clamp 25.80-26.32                         | 10                 | 444.00     | 4440.00        |
| 10" x 10" double band 11.60-12.40                        | 10                 | 134.00     | 1340.00        |
| 10" x 7.5" 11.75-12.15                                   | 10                 | 53.00      | 530.00         |
| 10" x 12.5" 11.75-12.15                                  | 10                 | 91.00      | 910.00         |
| 8" x 7.5" 9.70-10.10                                     | 10                 | 47.00      | 470.00         |





| Description                                   | Estimated Quantity | Unit Price | Extended Price  |
|---|--------------------|------------|-----------------|
| <b>MISC REPAIR CLAMPS (cont. from pg. 18)</b> |                    |            |                 |
| 4" x 7.5" 4.74-5.14                           | 10                 | 30.00      | 300.00          |
| 3 to 4" x 12.5" 3.96-4.25                     | 10                 | 47.00      | 470.00          |
| 3" x 7.5" 3.73-4.00                           | 10                 | 27.00      | 270.00          |
| 2.5" x 12.5" 2.70-3.00                        | 10                 | 41.00      | 410.00          |
| 2.5" x 7.5" 2.70-3.00                         | 10                 | 26.00      | 260.00          |
| <b>Section 1F Sub-Total</b>                   |                    |            | <b>69121.00</b> |

G. Meter Boxes and Lids:

| Description  | Estimated Quantity | Unit Price | Extended Price |
|--|--------------------|------------|----------------|
| 3/4" x 3/4" Single Service Meter box to be Ford Yoke Box or approved equivalent. Body and lid to be CIYM 241-233-T (angle in -- straight out).         | 20                 | 140.00     | 2800.00        |
| 1" Single Service Yoke Box YL111-444-T or approved equivalent. Body and lid to be cast iron.   | 20                 | 289.00     | 5780.00        |
| 3/4" x 3/4" Double Service Meter box to be Ford Double Gulf Box DG 248-243-T or approved equivalent. Body and lid to be CI (Angle in -- straight out). | 20                 | 256.00     | 5120.00        |
| 2" Protector Meter Box w/ Epoxy Coat -- Body and lid to be cast iron, epoxy coated. FPMB7EP-T.   | 20                 | 551.00     | 11020.00       |
| Epoxycoated CI lid for 2" meter box  | 20                 | 77.00      | 1540.00        |
| CI lid for 1" box with reader  | 20                 | 93.00      | 1860.00        |
| CI lid for single 3/4" box with reader   | 20                 | 84.00      | 1680.00        |
| CI lid for double 3/4" box with reader   | 20                 | 77.00      | 1540.00        |
| Single concrete boxes with reader lid  | 20                 | 64.00      | 1280.00        |
| Double concrete box with reader lid  | 20                 | 63.00      | 1260.00        |
| Grade adjuster for 1" CI box   | 20                 | 23.00      | 460.00         |
| Grade adjuster for 3/4" CI box   | 20                 | 23.00      | 460.00         |
| Rubber spacers with 2" hole  | 20                 | 5.50       | 110.00         |
| Plastic DFW lid with reader  | 20                 | 8.00       | 160.00         |
| Plastic Brooks lid with reader   | 20                 | 8.00       | 160.00         |
| Concrete lid, double with reader   | 20                 | 39.00      | 780.00         |
| Concrete lid, single with reader   | 20                 | 36.00      | 720.00         |
| Meter Box Keys MBLK  | 1                  | 7.00       | 7.00           |



| Description                                     | Estimated Quantity | Unit Price | Extended Price |
|---|--------------------|------------|----------------|
| Meter boxes & Lids (cont. from pg. 18)          |                    |            |                |
| Combination Yoke Box/Dallas Lid Key Part #9505  | 1                  | 28.00      | 28.00          |
| Ball Valve Yoke Box Wrench-SAVW                 | 1                  | 8.00       | 8.00           |
| Yoke Box Valve Wrench-MBVW                      | 1                  | 26.00      | 26.00          |
| 2" backflow preventer for 3" construction meter | 1                  | 499.00     | 499.00         |
| Coupling assembly for 3" construction meter     | 1                  | 39.00      | 39.00          |
| Section IG Sub-Total                            |                    |            | 37337.00       |

- H. Gate Valves: Gate valves are to be resilient seat, Mueller Model C506; American Darling Model CRS-80 or equivalent. Part and construction of value shall be domestic dual manufactured.

| Description                     | Estimated Quantity | Unit Price | Extended Price |
|---------------------------------|--------------------|------------|----------------|
| 2" brass, threaded              | 6                  | 29.70      | 178.20         |
| 2" cast iron, MJ with acc pak   | 6                  | 227.00     | 1362.00        |
| 2" cast iron female threaded    | 6                  | 203.00     | 1218.00        |
| 4" cast iron, MJ with acc pak   | 2                  | 349.00     | 698.00         |
| 6" cast iron, MJ with a acc pak | 10                 | 448.00     | 4480.00        |
| 8" cast iron, MJ with acc pak   | 2                  | 702.00     | 1404.00        |
| 10" cast iron, MJ with acc pak  | 10                 | 1091.00    | 10910.00       |
| 12" cast iron, MJ with acc pak  | 10                 | 1373.00    | 13730.00       |
| Section IH Sub-Total            |                    |            | 33980.20       |

- I. Valve Boxes:

| Description                               | Estimated Quantity | Unit Price | Extended Price |
|---|--------------------|------------|----------------|
| Black adjustable, black iron 18 x 24      | 20                 | 27.50      | 550.00         |
| Valve box lid, 4" diameter 24 x 36        | 20                 | 7.00       | 140.00         |
| Adjustable valve box top, Part #IVBSTS 10 | 50                 | 11.00      | 550.00         |
| Adjustable valve bottom, Part #VB2612     |                    | 13.25      |                |
| Section II Sub-Total                      |                    |            | 1240.00        |

SECTION 1 TOTAL: \$ 321998.70 (Pages 4-20)



**Section 2: Wastewater Materials**

- A. Sewer Pipe: All pipes shall be made from PVC components as defined and described in ASTM D-1784 for rigid ply (vinyl chloride) compounds and chlorinated poly (vinyl chloride) compounds. As per League City specifications SDR 35 and SDR 26 is required. The fluid tight integral bell gasket shall be the only gasket bid.

| Description          | Estimated Quantity | Unit Price | Extended Price |
|----------------------|--------------------|------------|----------------|
| 4" SCH 40 DWV        | 400                | 2.38       | 952.00         |
| 4" SDR 35            | 400                | .79        | 316.00         |
| 4" SDR 26 CL 160     | 400                | 1.13       | 452.00         |
| 6" SDR 35            | 400                | 1.62       | 648.00         |
| 6" SCH 40, DWV       | 400                | 3.99       | 1596.00        |
| 6" SDR 26 CL 160     | 400                | 2.22       | 888.00         |
| 8" SDR 35            | 200                | 2.84       | 568.00         |
| 8" SDR 26 CL 160     | 200                | 3.89       | 778.00         |
| 8" SCH 40 DWV        | 200                | 6.05       | 1210.00        |
| 10" SDR 35           | 200                | 4.81       | 962.00         |
| 10" SDR-26 CL 160    | 200                | 5.69       | 1138.00        |
| 10" SCH 40 DWV       | 20                 | 8.36       | 167.20         |
| Section 2A Sub-Total |                    |            | 9675.20        |

- B. Fiberglass Manholes: Fiberglass manholes shall be manufactured with a standard 48" inside diameter for the barrel portion. The top shall be hemispherical-shaped reducer with a 22 1/2" inside diameter man way. Lengths shall be as specified herein. Fiberglass manholes shall be of one-piece construction as manufactured by Owens/Corning or equivalent.

| Description          | Estimated Quantity | Unit Price | Extended Price |
|----------------------|--------------------|------------|----------------|
| 4 ft.                | 2                  | 659.00     | 1318.00        |
| 5 ft.                | 2                  | 747.00     | 1494.00        |
| 6 ft.                | 2                  | 829.00     | 1658.00        |
| 8 ft.                | 2                  | 991.00     | 1982.00        |
| Section 2B Sub-Total |                    |            | 6452.00        |

- C. Manhole Rings and Covers: Manhole rings and covers should be imprinted with the "City of League City" oak tree symbol and "Sanitary Sewer" embossed on the covers. Covers should have no vent holes. Rings and covers are to be cast iron moldings. They must be manufactured in the United States of America. Vulcan Part #V-1418-2N, Western Iron Works WM-18 or equivalent.

| Description  | Estimated Quantity | Unit Price | Extended Price |
|--|--------------------|------------|----------------|
| Rings and covers 23.5" w/ logo                     | 30                 | 232.00     | 6960.00        |
| Rings and covers 32" w/ logo                       | 30                 | 276.00     | 8280.00        |
| Throat rings 23 1/2" diameter by 3" thick concrete | 50                 | 23.00      | 1150.00        |
| Sewer cleanout boot                                | 10                 | 47.00      | 470.00         |
| 23.5" Bolted Rings and Lids w/logo                 | 20                 | 311.00     | 6220.00        |
| Section 2C Sub-Total                               |                    |            | 23080.00       |





- D. In Flow Protectors: The manhole inflow protector and its associated valve body and components shall be manufactured from corrosion proof material suitable for atmospheres containing hydrogen Sulphide and diluted sulfuric acid as well as other gases associated with wastewater collection systems. White plastic with handle.

The cover body shall be made from an acetate, butyrate, styrene material that meets the federal standards of L.P. 1183 and can pass the following ASTM test requirements: D256; D638; D790, D784; D648.

The thickness shall not be less than 3/32" nor greater than 3/16".

The gasket shall be made of closed cell neoprene. The gasket shall have a pressure sensitive adhesive on one side and be placed under the cover rim by the manufacturer. The adhesive shall be compatible with the cover material so as to form a long lasting bond in either wet or dry conditions of use.

The gas relief valve shall be designed to relieve at a pressure of one (1) pound. The valve body shall be made of medium density polyethylene. The venting tube shall be capable of sealing on dirt and small debris. The valve shall have a leak down rate not exceeding ten (10) gallons in twenty-four (24) hours to eliminate the standing pond of water over the manhole cover after a rain storm.

| Description          | Estimated Quantity | Unit Price | Extended Price |
|----------------------|--------------------|------------|----------------|
| In-Flow Protectors   | 100                | 23.50      | 2350.00        |
| Section 2D Sub-Total |                    |            | 2350.00        |

- E. Manhole Rehab Sealants: A ready-mixed hand or trowel-applied base sewer joint compound, designed to prevent infiltration between manhole frames and cone sections.

| Description                                  | Estimated Quantity | Unit Price | Extended Price |
|--|--------------------|------------|----------------|
| Gulf States Concrete Joint Sealant           | 10                 | NB         |                |
| Ultra-High, single-component coal tar mastic | 10                 | 40.00      | 400.00         |
| TALCO 4"w x 4"l Rim Neck Epoxy               | 10                 | NB         |                |

A special blend of cement powders which is designed to set up in 45 seconds under job site conditions producing the instantaneous accelerating strength needed to stop hydrostatic water flow.

| Description                      | Estimated Quantity | Unit Price | Extended Price |
|----------------------------------|--------------------|------------|----------------|
| PAKMIX Fast Setting Concrete Mix | 20                 | NB         |                |



A two-component acrylic polymer modified hydraulic coating which is supplied in ready mix kits. When applied to concrete or masonry, a water proof surface is produced which is self-curing with exceptional adhesion, resilience, flexibility, toughness, and durability.

| Description                            | Estimated Quantity | Unit Price | Extended Price |
|--|--------------------|------------|----------------|
| Pro Plug 45 Stop Leak Hydraulic Cement | 20                 | 35.00      | 700.00         |

A chemical grout gel of a polymer which cures upon reaction with water, resistant to infiltration of water.

| Description                                | Estimated Quantity | Unit Price | Extended Price |
|--|--------------------|------------|----------------|
| Scotch Seal Brand Chemical Grout Gel #5610 | 20                 | 380.00     | 7600.00        |
| PVC Glue Quart                             | 20                 | 7.00       | 140.00         |
| PVC Primer Quart                           | 20                 | 6.00       | 120.00         |
| Section 2E Sub-Total                       |                    |            | 8960.00        |

F. Fernco Adaptors with Clamps:

| Description                      | Estimated Quantity | Unit Price | Extended Price |
|----------------------------------|--------------------|------------|----------------|
| 4" pvc-pvc                       | 50                 | 3.30       | 165.00         |
| 4" clay-pvc                      | 50                 | 3.30       | 165.00         |
| 4" concrete-pvc                  | 50                 | 3.50       | 175.00         |
| 4" clay-concrete                 | 10                 | 12.00      | 120.00         |
| 6" pvc-pvc                       | 20                 | 7.00       | 140.00         |
| 6" clay-pvc                      | 20                 | 7.00       | 140.00         |
| 6" concrete-pvc                  | 20                 | 7.80       | 156.00         |
| 6" clay-concrete                 | 10                 | 25.00      | 250.00         |
| 8" pvc-pvc                       | 10                 | 10.80      | 108.00         |
| 8" clay-pvc                      | 10                 | 10.80      | 108.00         |
| 8" concrete-pvc                  | 10                 | 11.70      | 117.00         |
| 8" clay-concrete                 | 10                 | 39.00      | 390.00         |
| 10" pvc-pvc                      | 10                 | 16.20      | 162.00         |
| 10" clay-pvc                     | 10                 | 16.20      | 162.00         |
| 10" concrete-pvc                 | 10                 | 16.20      | 162.00         |
| 10" clay-concrete                | 10                 | 53.00      | 530.00         |
| 12" pvc-pvc                      | 10                 | 19.00      | 190.00         |
| 12" clay-pvc                     | 10                 | 19.00      | 190.00         |
| 12" concrete-pvc                 | 10                 | 19.00      | 190.00         |
| 12" clay-concrete                | 10                 | 66.00      | 660.00         |
| 6" x 4" clay-pvc concentric      | 10                 | 8.20       | 82.00          |
| 6" x 4" pvc-pvc concentric       | 10                 | 8.20       | 82.00          |
| 6" x 4" concrete-pvc concentric  | 10                 | 8.20       | 82.00          |
| 6" x 4" clay-concrete concentric | 10                 | 31.00      | 310.00         |



| Description                        | Estimated Quantity | Unit Price | Extended Price  |
|------------------------------------|--------------------|------------|-----------------|
| 6" x 4" clay-pvc eccentric         | 10                 | 50.00      | 500.00          |
| 6" x 4" pvc-pvc eccentric          | 10                 | 50.00      | 500.00          |
| 6" x 4" concrete-pvc eccentric     | 10                 | 50.00      | 500.00          |
| 6" x 4" clay-concrete eccentric    | 10                 | 50.00      | 500.00          |
| 8" x 4" clay-pvc concentric        | 10                 | 65.00      | 650.00          |
| 8" x 4" pvc-pvc concentric         | 10                 | 54.00      | 540.00          |
| 8" x 4" concrete-pvc concentric    | 10                 | 54.60      | 546.00          |
| 8" x 4" clay-concrete concentric   | 10                 | 54.60      | 546.00          |
| 8" x 4" clay-pvc eccentric         | 10                 | 78.00      | 780.00          |
| 8" x 4" pvc-pvc eccentric          | 10                 | 87.00      | 870.00          |
| 8" x 4" concrete-pvc eccentric     | 10                 | 70.00      | 700.00          |
| 8" x 4" clay-concrete eccentric    | 10                 | 105.00     | 1050.00         |
| 8" x 6" clay-pvc concentric        | 10                 | 13.00      | 130.00          |
| 8" x 6" pvc-pvc concentric         | 10                 | 13.00      | 130.00          |
| 8" x 6" concrete-pvc concentric    | 10                 | 14.00      | 140.00          |
| 8" x 6" clay-concrete concentric   | 10                 | 42.00      | 420.00          |
| 10" x 8" clay-pvc eccentric        | 10                 | 124.00     | 1240.00         |
| 10" x 8" pvc-pvc eccentric         | 10                 | 122.00     | 1220.00         |
| 10" x 8" concrete-pvc eccentric    | 10                 | 122.00     | 1220.00         |
| 10" x 8" clay-concrete eccentric   | 10                 | 139.00     | 1390.00         |
| 10" x 8" clay-pvc concentric       | 10                 | 18.00      | 180.00          |
| 10" x 8" pvc-pvc concentric        | 10                 | 17.00      | 170.00          |
| 10" x 8" concrete-pvc concentric   | 10                 | 19.00      | 190.00          |
| 10" x 8" clay-concrete concentric  | 10                 | 19.00      | 190.00          |
| 12" x 10" clay-pvc eccentric       | 10                 | 122.00     | 1220.00         |
| 12" x 10" pvc-pvc eccentric        | 10                 | 147.00     | 1470.00         |
| 12" x 10" concrete-pvc eccentric   | 10                 | 147.00     | 1470.00         |
| 12" x 10" clay-concrete eccentric  | 10                 | 116.00     | 1160.00         |
| 12" x 10" clay-pvc concentric      | 10                 | 23.00      | 230.00          |
| 12" x 10" pvc-pvc concentric       | 10                 | 21.00      | 210.00          |
| 12" x 10" concrete-pvc concentric  | 10                 | 23.00      | 230.00          |
| 12" x 10" clay-concrete concentric | 10                 | 82.00      | 820.00          |
| <b>RUBBER TAPPING SADDLES</b>      |                    |            |                 |
| 4" TST-4 (2313-74)                 | 20                 | 29.00      | 580.00          |
| <b>Section 2F Sub-Total</b>        |                    |            | <b>26528.00</b> |

G. Backflow Preventer:

| Description                 | Estimated Quantity | Unit Price | Extended Price |
|-----------------------------|--------------------|------------|----------------|
| 4" SCH 40                   | 10                 | 23.50      | 235.00         |
| 6" SCH 40                   | 10                 | 111.00     | 1110.00        |
| <b>Section 2G Sub-Total</b> |                    |            | <b>1345.00</b> |





H. PVC Fittings:

| Description                             | Estimated Quantity | Unit Price | Extended Price |
|---|--------------------|------------|----------------|
| <b>WYE'S</b>                            |                    |            |                |
| 4" x 4" Sch 40 DWV                      | 50                 | 7.80       | 390.00         |
| 4" x 4" SDR 35                          | 10                 | 3.60       | 36.00          |
| 4" x 4" SDR 26                          | 10                 | 24.00      | 240.00         |
| 6" x 4" SCH 40 DWV                      | 5                  | 17.00      | 85.00          |
| 6" x 4" SDR 35                          | 10                 | 12.80      | 128.00         |
| 6" x 4" SDR 26                          | 10                 | 30.00      | 300.00         |
| 6" x 6" Sch 40 DWV                      | 5                  | 22.80      | 114.00         |
| 6" x 6" SDR 35                          | 5                  | 14.70      | 73.50          |
| 6" x 6" SDR 26                          | 5                  | 36.00      | 180.00         |
| 8" x 4" SDR 35 Double                   | 10                 | 50.00      | 500.00         |
| 8" x 4" Sch 40 Double DWV               | 10                 | 62.00      | 620.00         |
| <b>TEES</b>                             |                    |            |                |
| 6" x 6" x 4" SDR 35                     | 10                 | 10.20      | 102.00         |
| 6" x 6" x 4" SDR 26                     | 10                 | 30.00      | 300.00         |
| 6" x 6" x 6" SDR 35                     | 10                 | 10.80      | 108.00         |
| 6" x 6" x 6" SDR 26                     | 10                 | 32.00      | 320.00         |
| 8" x 8" x 6" SDR 35                     | 10                 | 28.00      | 280.00         |
| 8" x 8" x 6" SDR 26                     | 10                 | 45.00      | 450.00         |
| 8" x 8" x 8" SDR 35                     | 10                 | 42.00      | 420.00         |
| 8" x 8" x 8" SDR 26                     | 10                 | 67.00      | 670.00         |
| <b>ELBOWS/BENDS Sweeping 90 Degrees</b> |                    |            |                |
| 4" SDR 35                               | 10                 | 2.80       | 28.00          |
| 4" SDR 26                               | 10                 | 19.00      | 190.00         |
| 6" SDR 40                               | 10                 | 16.00      | 160.00         |
| 6" SDR 35                               | 10                 | 12.00      | 120.00         |
| 6" SDR 26                               | 10                 | 42.00      | 420.00         |
| 8" SDR 40                               | 10                 | 24.00      | 240.00         |
| 8" SDR 35                               | 10                 | 53.00      | 530.00         |
| 8" SDR 26                               | 10                 | 83.00      | 830.00         |
| 10" SDR 40                              | 10                 | 174.00     | 1740.00        |
| 10" SDR 35                              | 10                 | 145.00     | 1450.00        |
| 10" SDR 26                              | 10                 | 184.00     | 1840.00        |
| 12" SDR 40                              | 10                 | 263.00     | 2630.00        |
| 12" SDR 35                              | 10                 | 209.00     | 2090.00        |
| 12" SDR 26                              | 10                 | 284.00     | 2840.00        |
| <b>ELBOWS/BENDS 90 Degrees</b>          |                    |            |                |
| 4" Sch 40 DWV                           | 5                  | 4.65       | 23.25          |
| 4" SDR 35                               | 5                  | 2.20       | 11.00          |
| 4" SDR 26                               | 5                  | 17.80      | 89.00          |
| 6" Sch 40 DWV                           | 5                  | 15.80      | 79.00          |
| 6" SDR 35                               | 10                 | 8.00       | 80.00          |



| Description                        | Estimated Quantity | Unit Price | Extended Price |
|------------------------------------|--------------------|------------|----------------|
| 6" SDR 26                          | 10                 | 19.80      | 198.00         |
| 8" Sch 40 DWV                      | 10                 | 21.00      | 210.00         |
| 8" SDR 35                          | 10                 | 28.00      | 280.00         |
| 8" SDR 26                          | 10                 | 83.00      | 830.00         |
| <b>ELBOWS/BENDS 22 1/2 Degrees</b> |                    |            |                |
| 4" Sch 40 DWV                      | 20                 | 3.30       | 66.00          |
| 4" SDR 35                          | 10                 | 2.10       | 21.00          |
| 4" SDR 26                          | 10                 | 13.00      | 130.00         |
| 6" Sch 40 DWV                      | 10                 | 19.00      | 190.00         |
| 6" SDR 35                          | 10                 | 9.15       | 91.50          |
| 6" SDR 26                          | 10                 | 25.00      | 250.00         |
| 8" Sch 40 DWV                      | 10                 | 52.00      | 520.00         |
| 8" SDR 35                          | 10                 | 23.00      | 230.00         |
| 8" SDR 26                          | 10                 | 44.00      | 440.00         |
| <b>ELBOWS/BENDS 45 Degrees</b>     |                    |            |                |
| 4" Sch 40 DWV                      | 50                 | 3.70       | 185.00         |
| 4" SDR 35                          | 10                 | 1.90       | 19.00          |
| 4" SDR 26                          | 10                 | 10.00      | 100.00         |
| 6" Sch 40 DWV                      | 10                 | 14.40      | 144.00         |
| 6" SDR 35                          | 5                  | 7.40       | 37.00          |
| 6" SDR 26                          | 5                  | 18.00      | 90.00          |
| 8" Sch 40 DWV                      | 5                  | 18.90      | 94.50          |
| 8" SDR 35                          | 5                  | 20.00      | 100.00         |
| 8" SDR 26                          | 5                  | 45.00      | 225.00         |
| <b>STRAIGHT COUPLINGS</b>          |                    |            |                |
| 4" Sch 40 DWV Glue Joint           | 10                 | 1.95       | 19.50          |
| 4" SDR 35 Glue Joint               | 10                 | 1.25       | 12.50          |
| 4" SDR 26 Glue Joint               | 10                 | 10.00      | 100.00         |
| 6" Sch 40 DWV Glue Joint           | 10                 | 6.10       | 61.00          |
| 6" SDR 35 Glue Joint               | 10                 | 4.60       | 46.00          |
| 6" SDR 26 Glue Joint               | 10                 | 16.00      | 160.00         |
| 8" Sch 40 DWV Glue Joint           | 10                 | 10.20      | 102.00         |
| 8" SDR 35 Glue Joint               | 10                 | 14.30      | 143.00         |
| 8" SDR 26 Glue Joint               | 5                  | 37.00      | 185.00         |
| 10" Sch 40 DWV Glue Joint          | 5                  | 35.00      | 175.00         |
| 10" SDR 35 Glue Joint              | 5                  | 40.00      | 200.00         |
| 10" SDR 26 Glue Joint              | 5                  | 54.00      | 270.00         |
| 12" Sch 40 DWV Glue Joint          | 2                  | 61.00      | 122.00         |
| 12" SDR 35 Glue Joint              | 2                  | 69.00      | 138.00         |
| 12" SDR 26 Glue Joint              | 2                  | 79.00      | 158.00         |
| <b>ADAPTOR, FEMALE, Threaded</b>   |                    |            |                |
| 4" Sch 40 DWV                      | 10                 | 2.70       | 27.00          |
| 4" SDR 35                          | 10                 | 2.50       | 25.00          |
| 4" SDR 26                          | 10                 | 2.50       | 25.00          |
| 6" Sch 40 DWV                      | 5                  | 8.70       | 43.50          |



| Description                                   | Estimated Quantity | Unit Price | Extended Price  |
|---|--------------------|------------|-----------------|
| 6" SDR 35                                     | 5                  | 11.80      | 59.00           |
| 6" SDR 26                                     | 5                  | 11.80      | 59.00           |
| 8" Sch 40 DWV                                 | 5                  | 50.00      | 250.00          |
| 8" SDR 35                                     | 5                  | 39.00      | 195.00          |
| 8" SDR 26                                     | 5                  | 39.00      | 195.00          |
| <b>ADAPTOR, FEMALE, Clean Out, Threaded</b>   |                    |            |                 |
| 4" Sch 40 DWV                                 | 15                 | 2.70       | 40.50           |
| 4" SDR 35                                     | 15                 | 2.50       | 37.50           |
| 4" SDR 26                                     | 15                 | 2.50       | 37.50           |
| 6" Sch 40 DWV                                 | 15                 | 8.70       | 130.50          |
| 6" SDR 35                                     | 15                 | 11.80      | 177.00          |
| 6" SDR 26                                     | 15                 | 11.80      | 177.00          |
| <b>ADAPTOR, FEMALE SPIGOT x FIP-PVC</b>       |                    |            |                 |
| 4" Sch 40 DWV                                 | 10                 | 2.70       | 27.00           |
| 4" SDR 35                                     | 10                 | 2.50       | 25.00           |
| <b>ADAPTOR, MALE, Clean Out, Threaded</b>     |                    |            |                 |
| 4" Sch 40 DWV                                 | 10                 | 3.90       | 39.00           |
| 4" SDR 35                                     | 10                 | 7.40       | 74.00           |
| 4" SDR 26                                     | 10                 | 7.40       | 74.00           |
| <b>ADAPTOR, MALE, Threaded</b>                |                    |            |                 |
| 4" Sch 40 DWV                                 | 10                 | 3.90       | 39.00           |
| 4" SDR 35                                     | 10                 | 7.40       | 74.00           |
| 4" SDR 26                                     | 10                 | 7.40       | 74.00           |
| 6" Sch 40 DWV                                 | 5                  | 7.00       | 35.00           |
| 6" SDR 35                                     | 5                  | 35.00      | 175.00          |
| 6" SDR 26                                     | 5                  | 35.00      | 175.00          |
| <b>CAPS, MALE, Threaded</b>                   |                    |            |                 |
| 4" Sch 40 DWV                                 | 10                 | 3.15       | 31.50           |
| 4" SDR 35                                     | 10                 | 1.50       | 15.00           |
| 4" SDR 26                                     | 10                 | 1.50       | 15.00           |
| 6" Sch 40 DWV                                 | 10                 | 4.00       | 40.00           |
| 6" SDR 35                                     | 5                  | 7.60       | 38.00           |
| 6" SDR 26                                     | 5                  | 7.60       | 38.00           |
| <b>ADAPTOR, MALE SPIGOT x MIP x slip -PVC</b> |                    |            |                 |
| 4" Sch 40 DWV                                 | 10                 | 3.90       | 39.00           |
| 4" SDR 35                                     | 10                 | 7.40       | 74.00           |
| 6" Sch 40 DWV                                 | 10                 | 7.00       | 70.00           |
| 6" SDR 35                                     | 10                 | 35.00      | 350.00          |
| <b>Section 2H Sub-Total</b>                   |                    |            | <b>30049.75</b> |

SECTION 2 TOTAL: \$ 108439.95 (pages 21-27)

GRAND TOTAL (Sections 1 & 2): \$ 430438.65





**BID SHEET**

**DUE DATE: Tuesday, November 24, 2015 by 2:00 p.m.**

| <b>Section 1      Water System Materials</b> |                        |                  |
|--|------------------------|------------------|
|  | <u>Description</u>     | <u>Price</u>     |
| 1A   | Water Pipes            | 9587.00          |
| 1B   | Fire Hydrants          | 23418.50         |
| 1C   | Fittings               | 162930.00        |
| 1D   | Service Saddles        | 2705.50          |
| 1E   | Tapping Saddles        | 14685.00         |
| 1F   | Full Circle Clamps     | 69121.00         |
| 1G   | Meter Boxes & Lids     | 37337.00         |
| 1H   | Gate Valves            | 33980.20         |
| 1I   | Valve Boxes            | 1240.00          |
|  | <b>Total Section 1</b> | <b>321998.70</b> |
| <b>Section 2      Wastewater Materials</b>   |                        |                  |
|  | <u>Description</u>     | <u>Price</u>     |
| 2A   | Sewer Pipes            | 9675.20          |
| 2B   | Fiberglass Manholes    | 6452.00          |
| 2C   | Manhole Rings          | 23080.00         |
| 2D   | In Flow Protectors     | 2350.00          |
| 2E   | Manhole Rehab          | 8960.00          |
| 2F   | Fernco Adaptors        | 26528.00         |



| Section<br>2 | Wastewater Materials<br>(continued) |           |
|--------------|-------------------------------------|-----------|
|              | Description                         | Price     |
| 2G           | Backflow Preventers                 | 1345.00   |
| 2H           | PVC Fittings                        | 30049.75  |
|              | Total Section 2                     | 108439.95 |
|              |                                     |           |
|              | Grand Total (Sections 1 and 2)      | 430438.65 |

Unit prices listed above are good for 90 calendar days

HD Supply Waterworks

Name of Firm/Company

Lyn Sanders Branch Manager

Agent's Name (Please Print) Agent's Title

7022 Easthaven Blvd Houston Texas 77017

Mailing Address City State Zip

713-378-0129 832-570-5179

Telephone Number Cell Phone Number

lyn.sanders@hdsupply.com

Email Address

*Lyn Sanders* 11/23/15

Authorized Signature Date



### BIDDER'S CERTIFICATION

The 1985 Texas Legislature passed HB620 relating to bids by nonresident contractors (now codified at Sections 2252.001 through 2252.004, Texas Government Code). The pertinent portion of the Act has been extracted and is as follows:

(3) "Nonresident bidder" refers to a person who is not a resident.

(4) "Resident bidder" refers to a person whose principal place of business is in this state, including a contractor whose ultimate parent company or majority owner has its principal place of business in this state.

A governmental entity may not award a governmental contract to a nonresident bidder unless the nonresident underbids the lowest bid submitted by a responsible resident bidder by an amount that is not less than the amount by which a resident bidder would be required to underbid the a nonresident bidder to obtain a comparable contract in the state in which the nonresident's principal place of business is located.

I certify that HD Supply Waterworks is a resident bidder of Texas  
as defined in Section 2252.001(4), Texas Government Code.  
(Company Name)

Signature Lyn Sanders  
Print Name Lyn Sanders

I certify that \_\_\_\_\_ is a Nonresident bidder as  
defined in Section 2252.001(3), Texas Government (Company Name) and our principal place  
of business is \_\_\_\_\_  
(City and State)

Signature \_\_\_\_\_  
Print Name \_\_\_\_\_





### SUPPLIER INFORMATION FORM

|                               |   |
|-------------------------------|---|
| COMPANY'S FULL BUSINESS NAME: | HD Supply Waterworks                      |
| PHYSICAL ADDRESS:             | 7022 Easthaven Blvd. Houston, Texas 77017 |
| PHONE #:                      | 713-378-0129                              |
| FAX #:                        | 713-378-0429                              |
| CONTACT PERSON:               | Lyn Sanders                               |
| PHONE #:                      | 713-378-0129                              |
| REMITTANCE ADDRESS:           | Same                                      |
| PHONE #:                      |   |
| FAX #:                        |   |
| CONTACT PERSON:               |   |
| PHONE #:                      |   |
| PAYMENT TERMS DISCOUNT:       | Net 30                                    |
| COMPANY TAX ID#:              | 1-03-0550887-0                            |