

# PLANS OF PROPOSED WALTER HALL PARK SPECIAL EVENT TRFFIC CONTOL



## INDEX TO SHEETS

| <u>SHEET NO.</u> | <u>SHEET DESCRIPTION</u>            |
|------------------|-------------------------------------|
| 1                | COVER SHEET                         |
| 2-3              | TRAFFIC CONTROL PARK NORTH ENTRANCE |
| 4                | TRAFFIC CONTROL PARK SOUTH ENTRANCE |



SITE MAP  
N.T.S.

APPROVED BY:



CITY OF LEAGUE CITY  
TRAFFIC ENGINEER

DATE

4-4-12



WALTER HALL PARK  
TRAFFIC CONTROL

NOTES:

**WARNING:**  
UNDERGROUND UTILITIES CONTRACTOR  
IS RESPONSIBLE FOR LOCATING AND  
PROTECTING UNDERGROUND UTILITIES  
THAT MAY BE AFFECTED BY THIS  
PROJECT. GIVE UTILITY COMPANIES  
THE OPPORTUNITY TO LOCATE THEIR  
LINES BEFORE DIGGING. CALL LOCAL  
UTILITY COORDINATING COMMITTEE OR  
AGENCY TO HAVE UTILITY LOCATIONS  
MARKED.

**WARNING:**  
OVERHEAD ELECTRICAL LINES OVERHEAD  
ELECTRICAL LINES MAY EXIST ON  
THE PROPERTY. WE HAVE NOT  
ATTEMPTED TO MARK THOSE LINES  
SINCE THEY ARE CLEARLY VISIBLE,  
BUT SHOULD BE LOCATED PRIOR TO  
BEGINNING ANY CONSTRUCTION.  
TEXAS LAW, SECTION 752, HEALTH  
AND SAFETY CODE, FORBIDS ALL  
ACTIVITIES IN WHICH PERSONS OR  
THINGS MAY COME WITHIN SIX (6) FEET  
OF LIVE OVERHEAD HIGH VOLTAGE  
LINES. PARTIES RESPONSIBLE FOR THE  
WORK, INCLUDING CONTRACTORS, ARE  
LEGALLY RESPONSIBLE  
FOR THE SAFETY OF CONSTRUCTION  
WORKERS UNDER THIS LAW. THIS LAW  
CARRIES BOTH CRIMINAL AND CIVIL  
LIABILITY.  
FOR UTILITY LOCATES, CONTRACTOR  
SHALL CALL: LONESTAR-CALL BEFORE  
YOU DIG AT:  
1-800-669-8344  
CITY WATER & SANITARY SEWER:  
DIG TEST AT: 1-800-344-8377  
CITY STORM SEWER:  
DIG TEST AT: 1-800-344-8377  
CITY TRAFFIC AT: 281-554-1199



| DATE | REVISION | BY |
|------|----------|----|
|      |          |    |
|      |          |    |
|      |          |    |
|      |          |    |

SH 3 @ WALTER HILL  
PARK  
NORTH ENTRANCE

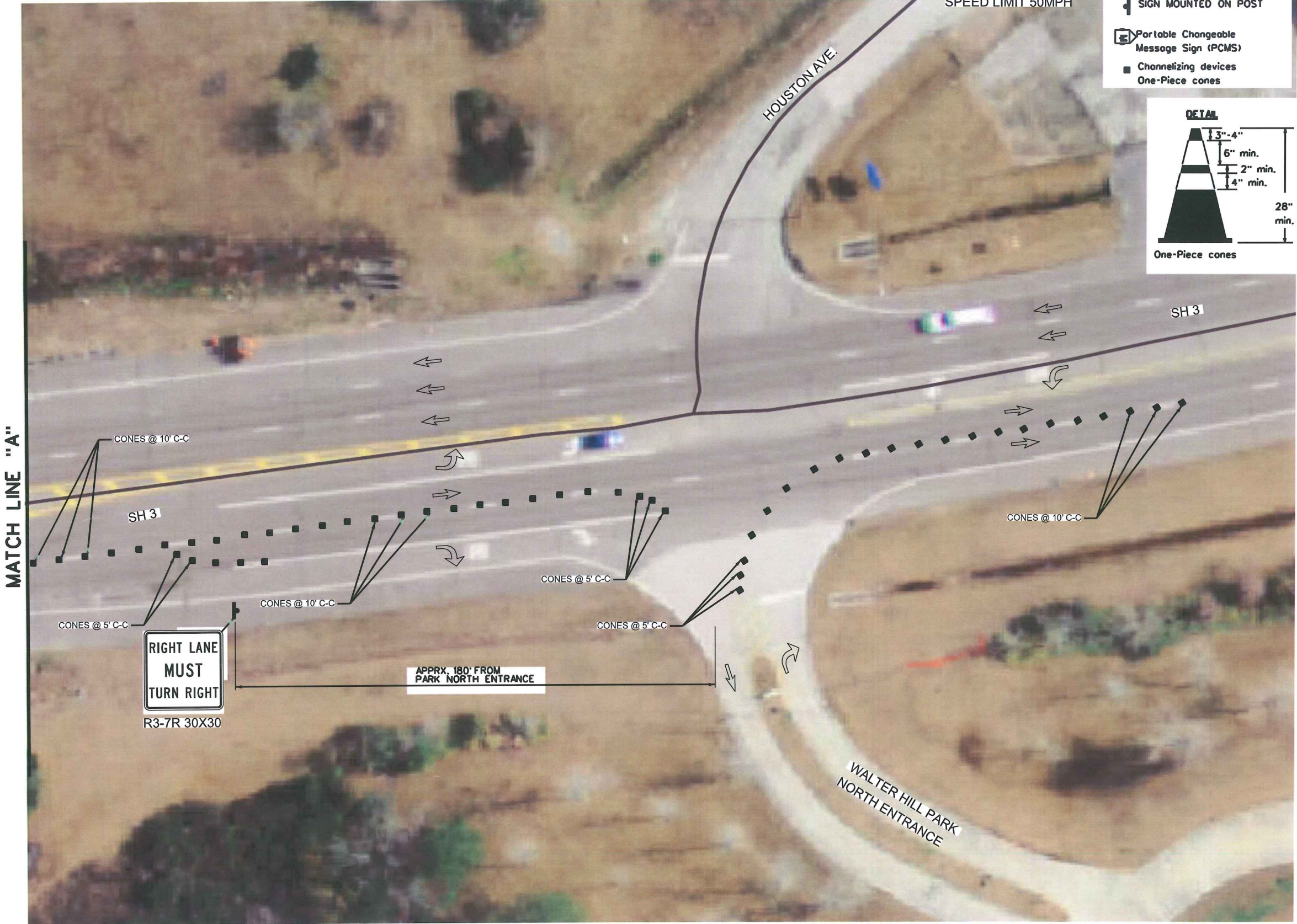
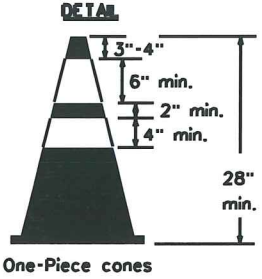


|               |                  |
|---------------|------------------|
| PROJECT NO.   |                  |
| DRAWN: M.M.B. | Checked          |
| SCALE: N.T.S. | DATE: APRIL/2012 |
| SHEET 1       | OF 3             |



SPEED LIMIT 50MPH

- LEGEND**
- ← DIRECTION OF TRAFFIC FLOW
  - SIGN MOUNTED ON POST
  - Portable Changeable Message Sign (PCMS)
  - Channelizing devices One-Piece cones





**NOTES:**

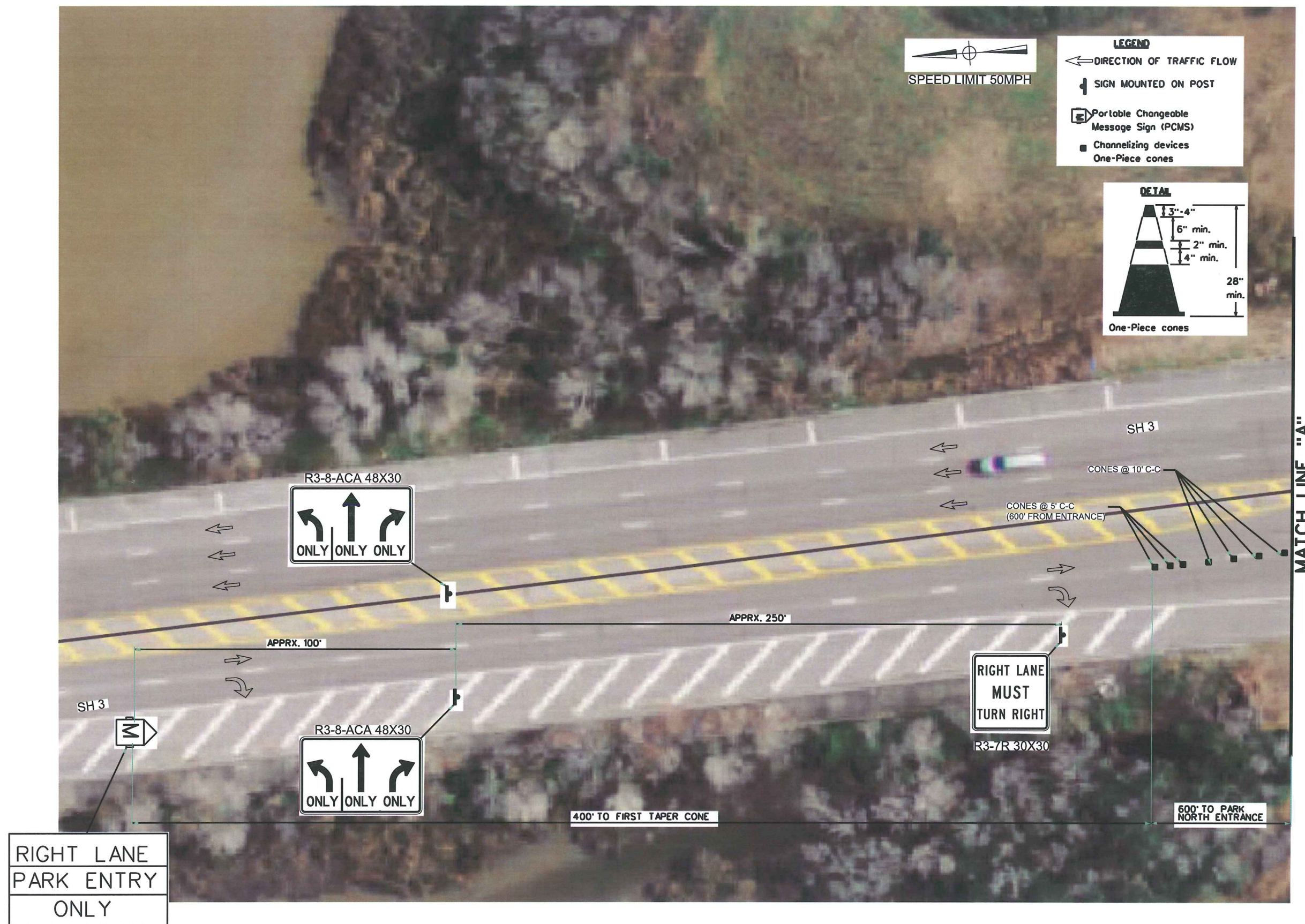
WARNING:  
OVERHEAD ELECTRICAL LINES OVERHEAD  
ELECTRICAL LINES MAY EXIST ON  
THE PROPERTY. WE HAVE NOT  
ATTEMPTED TO MARK THOSE LINES  
SINCE THEY ARE CLEARLY VISIBLE,  
BUT SHOULD BE LOCATED PRIOR TO  
BEGINNING ANY CONSTRUCTION.  
TEXAS LAW, SECTION 752, HEALTH  
AND SAFETY CODE, FORBIDS ALL  
ACTIVITIES IN WHICH PERSONS OR  
THINGS MAY COME WITHIN SIX (10) FEET  
OF LIVE OVERHEAD HIGH VOLTAGE  
LINES. PARTIES RESPONSIBLE FOR THE  
WORK, INCLUDING CONTRACTORS, ARE  
LEGALLY RESPONSIBLE  
FOR THE SAFETY OF CONSTRUCTION  
WORKERS UNDER THIS LAW. THIS LAW  
CARRIES BOTH CRIMINAL AND CIVIL  
LIABILITY.  
FOR UTILITY LOCATES, CONTRACTOR  
SHALL CALL: LONESTAR-CALL BEFORE  
YOU DIG AT:  
1-800-669-8344  
CITY WATER & SANITARY SEWER:  
DIG TEST AT: 1-800-344-8377  
CITY STORM SEWER:  
DIG TEST AT: 1-800-344-8377  
CITY TRAFFIC AT: 281-554-1199

[illegible]

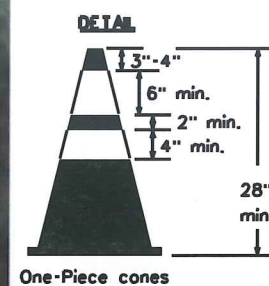
SH 3 @ WALTER HILL  
PARK  
NORTH ENTRANCE




|               |                  |
|---------------|------------------|
| PROJECT NO.   | ✓                |
| DRAWN: M.M.B. | Checked          |
| SCALE: N.T.S. | DATE: APRIL/2012 |
| SHEET 2       | OF 3             |







### LEGEND

- ← DIRECTION OF TRAFFIC FLOW
- ↓ SIGN MOUNTED ON POST
-  Portable Changeable Message Sign (PCMS)
- Channelizing devices  
One-Piece cones

SPEED LIMIT 50MPH



LEFT  
LANE  
CLOSED

CW20-5L 48X48

CONES @ 5' C-C

CONES @ 10' C-0

SH 3

CONES @ 10' C-C

C-C

APPROX. 400' FROM  
PARK SOUTH ENTRANCE

— CONES @ 10' C-C

CONES @ 5' C-C

CONES @ 5' C-C.

CONES @ 10' C-C

APPROX. 600'  
FROM PARK SOUTH  
ENTRANCE

CONES @ 5' C-C

CW20-5R 48X48



RIGHT  
LANE  
CLOSED

**NOTES:**

**WARNING:**  
UNDERGROUND UTILITIES CONTRACTOR  
IS RESPONSIBLE FOR LOCATING AND  
PROTECTING UNDERGROUND UTILITIES  
THAT MAY BE AFFECTED BY THIS  
PROJECT. GIVE UTILITY COMPANIES  
THE OPPORTUNITY TO LOCATE THEIR  
LINES BEFORE DIGGING. CALL LOCAL  
UTILITY COORDINATING COMMITTEE OR  
AGENCY TO HAVE UTILITY LOCATIONS  
MARKED.

**WARNING:**  
OVERHEAD ELECTRICAL LINES OVERHEAD  
ELECTRICAL LINES MAY EXIST ON  
THE PROPERTY. DO NOT  
ATTEMPT TO MARK THOSE LINES  
SINCE THEY ARE CLEARLY VISIBLE.  
BEGINNING ANY CONSTRUCTION  
TEXAS LAW, SECTION 752, HEALTH  
AND SAFETY CODE, FORBIDS ALL  
ACTIVITIES IN WHICH PERSONS OR  
THINGS MAY COME WITHIN SIX (6) FEET  
OF LIVE OVERHEAD HIGH VOLTAGE  
LINES. PARTIES RESPONSIBLE FOR THE  
WORK, INCLUDING CONTRACTORS, ARE  
LEGALLY RESPONSIBLE  
FOR THE SAFETY OF CONSTRUCTION  
WORKERS UNDER THIS LAW. THIS LAW  
CARRIES BOTH CRIMINAL AND CIVIL  
LIABILITY.

**LIABILITY.  
FOR UTILITY LOCATES, CONTRACTOR  
SHALL CALL: LONESTAR-CALL BEFORE  
YOU DIG AT:  
1-800-669-8344  
CITY WATER & SANITARY SEWER:  
DIG TEST AT: 1-800-344-8377  
CITY STORM SEWER:  
DIG TEST AT: 1-800-344-8377  
CITY TRAFFIC AT: 281-554-1199**

[illegible]

SH 3 @ WALTER HILL  
PARK  
SOUTH ENTRANCE



|               |                   |
|---------------|-------------------|
| PROJECT NO.   |                   |
| DRAWN: M.M.B. | Checked           |
| SCALE: N.T.S. | DATE: APRIL /2012 |
| SHEET 3       | OF 3              |