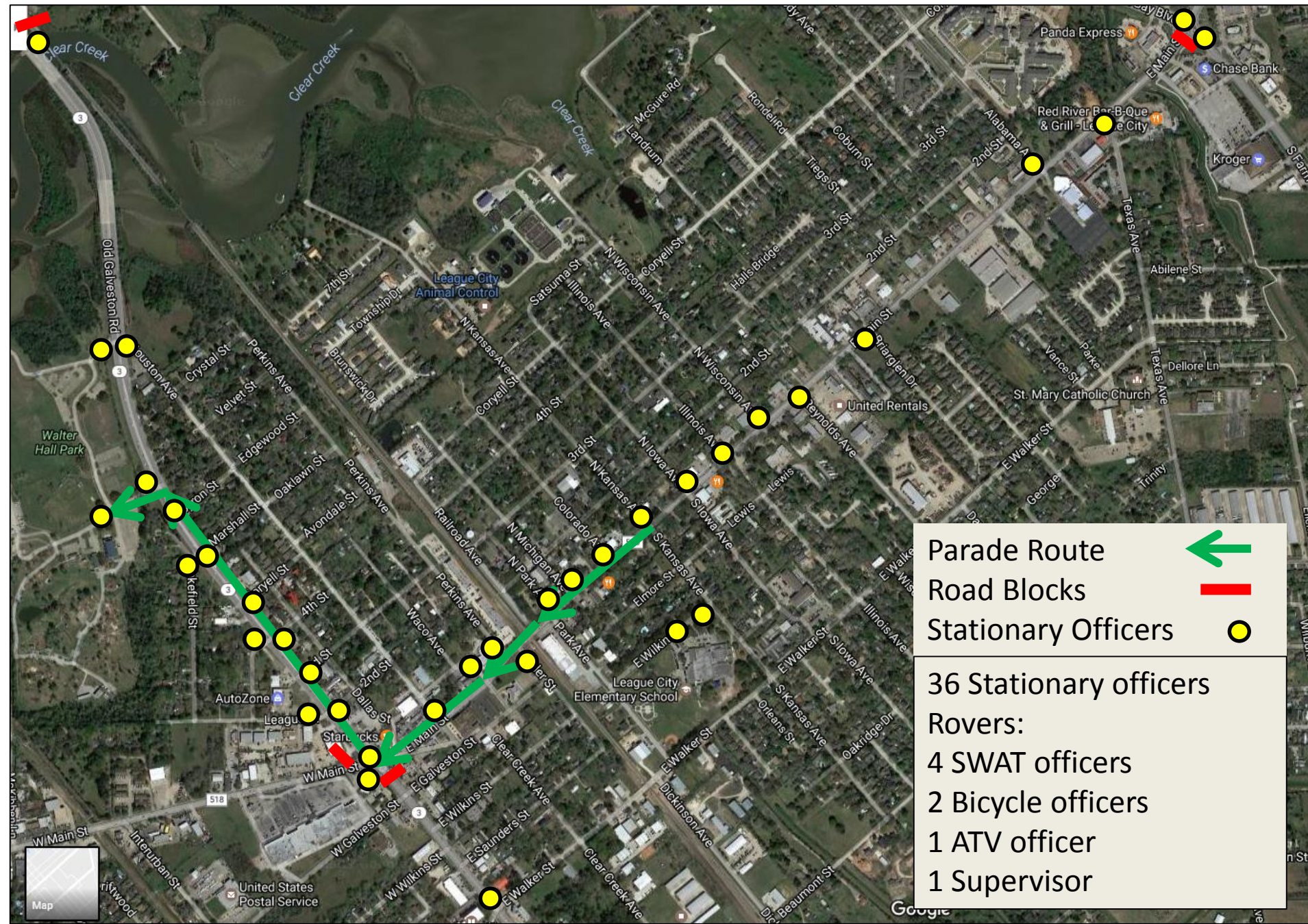


League City Music Fest Parade Route  
Saturday, May 6, 2017

The map shows the parade route starting at the intersection of Wakefield St and W Main St. The route proceeds north on Wakefield St, then turns east on W Main St, and finally turns south on W Galveston St. The route is marked with a thick green line and arrows. The map includes labels for various streets, landmarks like Walter Hall Park and League City Elementary School, and businesses like AutoZone and Starbucks. A text box in the top left corner provides the event details.







# DETOUR ROUTE

