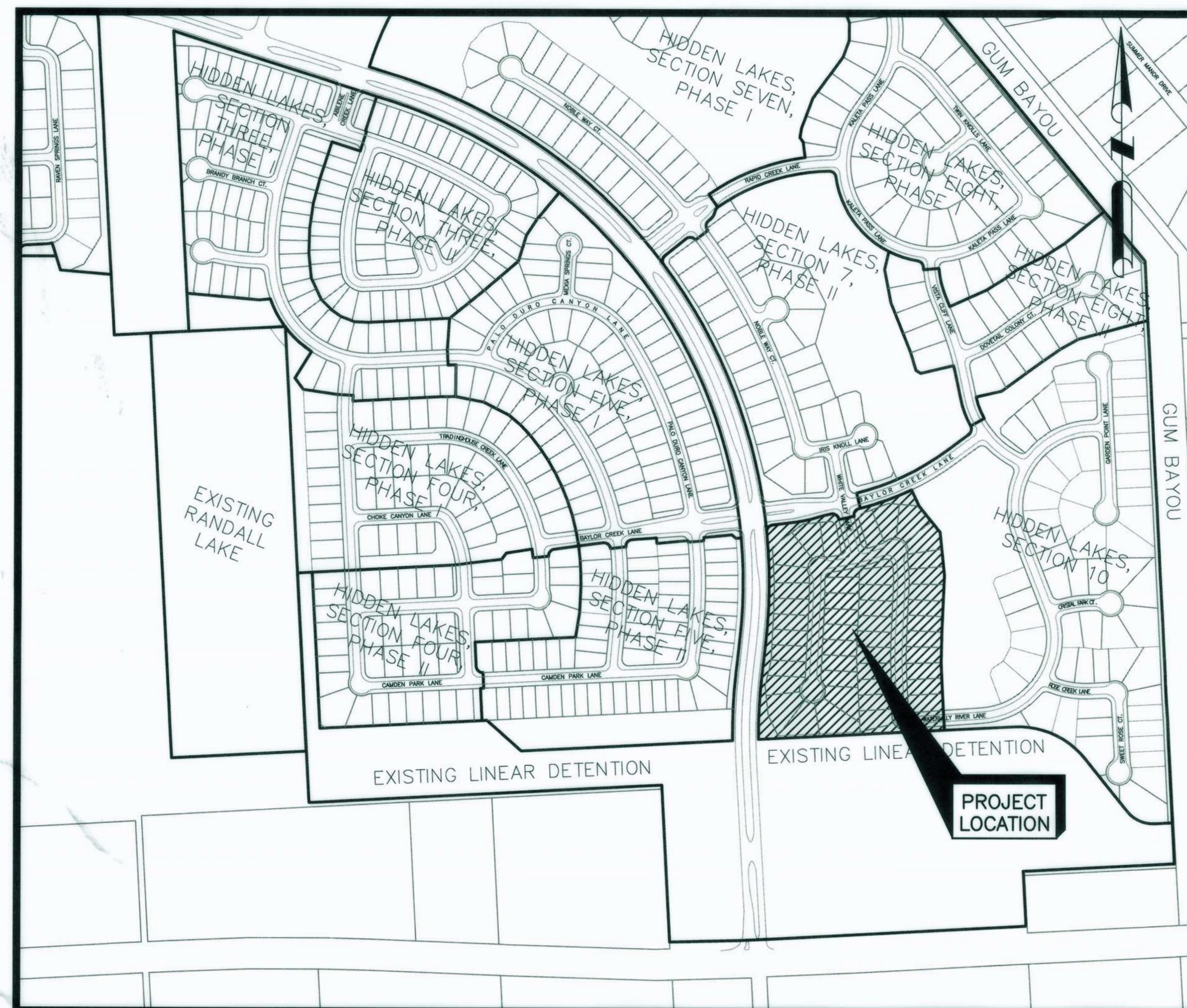


CONSTRUCTION PLANS FOR
WATERLINE, SANITARY SEWER, DRAINAGE FACILITIES AND PAVING
TO SERVE
HIDDEN LAKES SECTION 9
WITHIN GALVESTON COUNTY M.U.D. No. 45
GALVESTON COUNTY
LEAGUE CITY, TEXAS

RECORD DRAWINGS
4-20-2017

NOTE:
THIS PROJECT IS CONSTRUCTED IN GENERAL
CONFORMANCE WITH THESE PLANS AND
ELEVATIONS ON THESE DRAWINGS REPRESENT
WHAT WAS CONSTRUCTED WITHIN ENGINEERING
TOLERANCES.

THIS RECORD DRAWING SUBMITTAL OF THIS SECURITY
SIGNED AND APPROVED PLANS BY CITY OF LEAGUE CITY
ENGINEERS PREVENT THE CONSULTANT, DANNENBAUM,
FROM MANIPULATING THESE DOCUMENTS FOR A
TRUE SCALED REPRODUCTION.



INDEX OF DRAWINGS

SHEET NO. DESCRIPTION

01. COVER
02. CONSTRUCTION NOTES

INDEX SHEETS

03. WATER & SANITARY SEWER INDEX MAP
04. PAVING & DRAINAGE INDEX MAP
05. DRAINAGE AREA MAP
06. DRAINAGE AREA CALCULATIONS
07. TRAFFIC SIGNAGE & PAVEMENT MARKING PLAN
08. SITE GRADING PLAN

PLAN AND PROFILES

09. PLAN & PROFILE WHITE VALLEY LANE STA. 2+00.00 TO END
10. PLAN & PROFILE WATERLILY RIVER LANE STA. 0+00.00 TO END
11. PLAN & PROFILE ALLENDALE CLIFF LANE STA. 0+00.00 TO END
12. PLAN & PROFILE LAKESIDE HARBOUR COURT STA. -1+00.00 TO STA. 4+31.54
PLAN & PROFILE HARTFORD MILLS LANE STA. 1+00.00 TO STA. 6+50.81

DETAILS

13. STORM SEWER DETAILS
14. SANITARY SEWER DETAILS
15. WATER DETAILS
16. PAVING DETAILS
17. PEDESTRIAN FACILITIES CURB RAMPS
18. PAVING MARKING DETAILS

STORM WATER POLLUTION PREVENTION

19. STORM WATER POLLUTION PREVENTION PLAN
20. STORM WATER POLLUTION PREVENTION PLAN DETAILS

REVIEW SIGNATURES

ENGINEERING: *CS* DATE 11/23/16
TRAFFIC: N/A
FIRE MARSHAL: *Johnny L. Sims* 11/28/16
UTILITY LINE: *Ch. L. R.* 11/28/16
REPAIR:
CONSTRUCTION MANAGEMENT:

THE REVIEW SIGNATURES ABOVE FOR THIS SET OF
PLANS IN NO WAY IMPLIES APPROVAL OR
ACCEPTANCE AND IS PURELY A REFLECTION OF THE
CITY'S REVIEW PROCESS.

Christopher Sims
CHRISTOPHER SIMS, P.E.,
ASSISTANT CITY ENGINEER
CITY OF LEAGUE CITY

THE SIGNER OF THIS SET OF PLANS HAS NO OBJECTION TO THE
DESIGN OF THESE PLANS. THOUGH THE REVIEW PROCESS THESE
PLANS HAVE BEEN FOUND TO BE IN GENERAL COMPLIANCE WITH
LEAGUE CITY'S "GENERAL DESIGN AND CONSTRUCTION
STANDARDS" MANUAL AND CONSTRUCTION DETAILS. IT SHOULD BE
NOTED THAT ALL CALCULATIONS, MEASUREMENTS, AND OVERALL
LINE WORK WITHIN THESE PLANS SHOULD BE CHECKED AND
VERIFIED. THIS APPROVAL IS GOOD FOR 1 (ONE) YEAR FROM THE
DATE OF SIGNING AS SHOWN. THE PLANS SUBMITTED HAVE BEEN
PREPARED, SIGNED, AND SEALED BY A PROFESSIONAL ENGINEER
LICENSED TO PRACTICE ENGINEERING IN THE STATE OF TEXAS,
WHICH CONVEYS THE ENGINEER'S RESPONSIBILITY AND
ACCOUNTABILITY. DESIGN ENGINEER ASSUMES ALL RESPONSIBILITY
FOR ANY INCONSISTENCIES OR IMPERFECTIONS IN THESE PLANS.

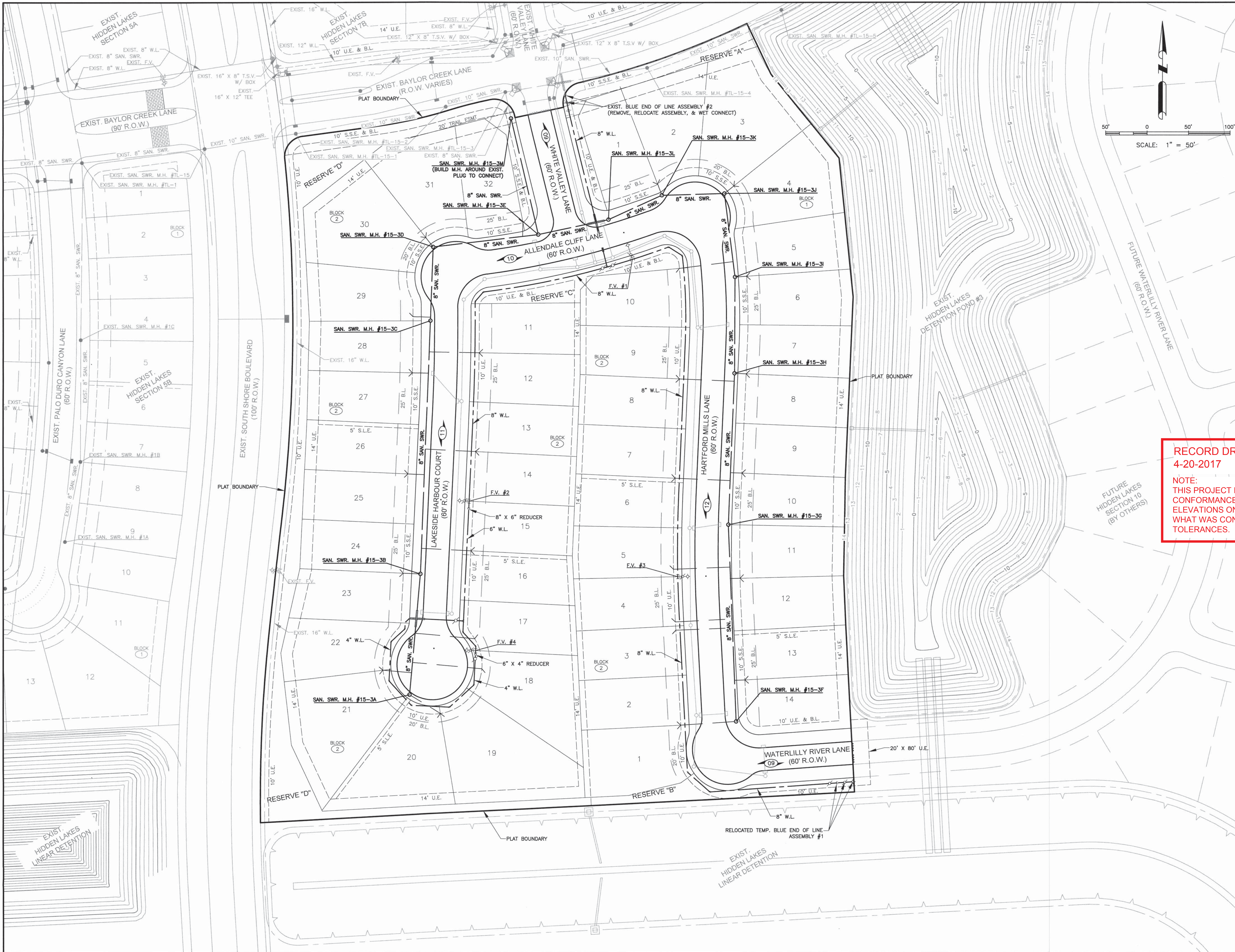
DANNENBAUM

ENGINEERING CORPORATION
T.B.P.E. FIRM REGISTRATION #392
3100 WEST ALABAMA HOUSTON, TEXAS 77098 (713) 520-9570

November 18, 2016

A PRE-CONSTRUCTION MEETING WITH THE CITY OF LEAGUE CITY
ENGINEERING DEPARTMENT IS REQUIRED AT LEAST 10 WORKING DAYS
PRIOR TO ON-SITE CONSTRUCTION ACTIVITIES. CALL 281-554-1440 FOR
A MEETING DATE & TIME. A PRE-CONSTRUCTION MEETING FOR THIS
PROJECT MAY NOT BE SCHEDULED AND CONSTRUCTION OF THE PROJECT
MAY NOT COMMENCE PRIOR TO APPROVAL OF THESE PLANS BY THE
CITY ENGINEER AS EVIDENCED BY HIS SIGNATURE.





BENCHMARK:

CITY OF LEAGUE CITY BENCHMARK
DESIGNATION GPS STA. 10.
ELEV.=20.06 FEET (1929 NGVD - 1987 ADJ.)
POINT IS A RAILROAD SPIKE - FROM THE
INTERSECTION OF CALDER ROAD TO ITS INTERSECTION WITH
ERVIN STREET. GO WEST ON ERVIN STREET
APPROXIMATELY 300 FEET TO AN ASPHALT DRIVEWAY
ON RIGHT (NORTH), ADDRESSED 1206 ERVIN STREET.
THE POINT IS LOCATED 69.1 FEET NORTHEASTERLY
OF A FIRE HYDRANT LOCATED ON THE OPPOSITE SIDE
OF ERVIN STREET, 54 FEET WESTERLY OF THE CENTER
OF A POWER POLE ON THE SAME SIDE OF ERVIN
STREET, AND 18.2 FEET NORTHWESTERLY OF THE
MOST EASTERLY END OF RCP CULVERT UNDER SAID
DRIVEWAY.

LEGEND

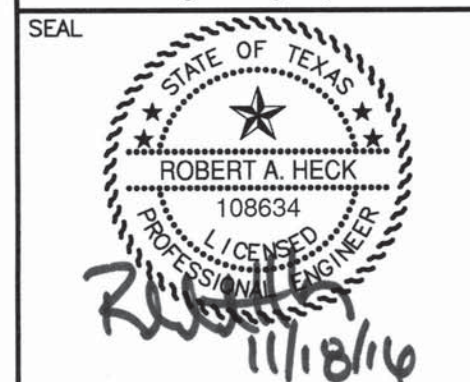
- SAN. SWR. LEAD
- PROP. SAN. SWR. WITH M.H.
- EXIST. SAN. SWR. WITH M.H.
- PROP. STM. SWR., INLET & M.H.
- EXIST. STM. SWR., INLET & M.H.
- PROP. WATER LINE, FLUSHING VALVE,
GATE VALVE, BLOW OFF VALVE, AND
VERTICAL OFFSET
- EXIST. WATER LINE, FLUSHING VALVE,
GATE VALVE, BLOW OFF VALVE, AND
VERTICAL OFFSET
- PLAT BOUNDARY
- BLOCK NUMBER
- SHEET REFERENCE NUMBER
- U.E., STM.S.E., W.L.E. & S.S.E.
- B.L.
- UTILITY EASEMENT
- STORM SEWER EASEMENT
- WATERLINE EASEMENT
- SANITARY SEWER EASEMENT
- BUILDING LINE

RECORD DRAWINGS
4-20-2017

NOTE:
THIS PROJECT IS CONSTRUCTED IN GENERAL
CONFORMANCE WITH THESE PLANS AND
ELEVATIONS ON THESE DRAWINGS REPRESENT
WHAT WAS CONSTRUCTED WITHIN ENGINEERING
TOLERANCES.

CONSTRUCTION DRAWINGS

City of League City
Engineering Dept.



DATE REVISION CKD. MADE APPD

DANNENBAUM
ENGINEERING CORPORATION
T.B.P.E. FIRM REGISTRATION #392
3100 WEST ALABAMA HOUSTON, TX 77098 (713) 520-9570

GALVESTON COUNTY M.U.D. NO. 45

HIDDEN LAKES
SECTION 9

LEAGUE CITY, TEXAS

WATER & SANITARY
SEWER INDEX MAP

DESIGN BY: EWS DATE: Nov. 18, 16 SHEET NO. 03 OF 20

DRAWN BY: EWS

APPROVED: RAH SCALE: 1" = 50' JOB NO. 4341-19

G:\1130\4341-19\DRAWINGS\CNSTR PLANS\03 W&SIM.dwg

2x3DEC40SC.DWT

ORIGINAL SCALE IN INCHES
FOR REDUCED PLANS