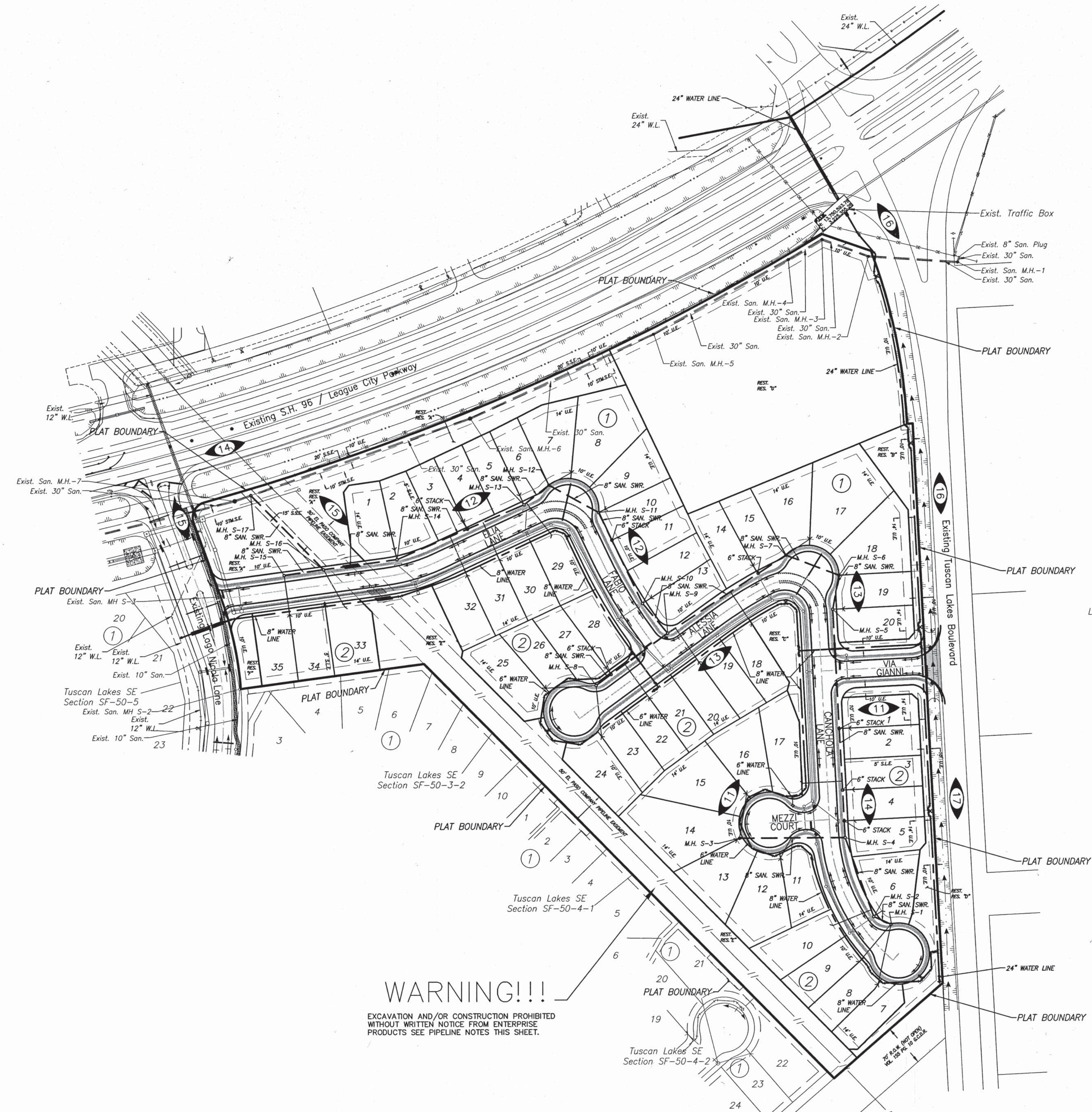


4
Date/Time : Tue, 19 Apr 2016 11:14:40am User Name : c:\cache
File Name : E:\Projects\1788-6050\1788-6050-6-Sheet Files\04-SF-50-6-SE-SAN.dwg



WARNING!!!
EXCAVATION AND/OR CONSTRUCTION PROHIBITED
WITHOUT WRITTEN NOTICE FROM ENTERPRISE
PRODUCTS SEE PIPELINE NOTES THIS SHEET.

SANITARY SEWER SYSTEM

LEGEND

- PROPOSED SANITARY SEWER AND MANHOLE
- EXISTING SANITARY SEWER AND MANHOLE
- DOUBLE SANITARY SEWER SERVICE LEAD
- SINGLE SANITARY SEWER SERVICE LEAD
- INDICATES UTILITY EASEMENT OR SANITARY SEWER EASEMENT
- INDICATES SHEET REFERENCES
- INDICATES BLOCK NUMBER

WATER DISTRIBUTION SYSTEM

LEGEND

- PROPOSED WATER LINE AND GATE VALVE AND BOX
- PROPOSED WATER LINE W/BENDS
- PROPOSED WATER LINE W/TEE
- PROPOSED WATER LINE W/FLUSHING VALVE UNIT
 - A. LINE SIZE X 6" TEE
 - B. 6" GATE VALVE AND BOX
 - C. FLUSHING VALVE

PIPELINE NOTES:

- Texas (TESS) One-Call at 1-800-344-8377 must be contacted at least 48 hours (2 working days) before any construction and/or excavation activities are initiated within the pipeline right of way so that Enterprise Products may have a representative present to ensure that there are no conflicts with the pipeline.
- To have the pipeline physically located and depth verified, please contact Enterprise Products' local field representative: Rodger Jablonski, office Tel. (713)-562-4978.
- The contractor is responsible for taking all necessary safety precautions and will be held responsible for any damages cause to the pipeline or property as a result of their work.
- No permanent structures may be constructed on the pipeline right of way.
- Contractor shall be responsible to comply with Enterprise Products' pipeline requirements when performing construction within pipeline easement.
- Contractor shall not be permitted to transport construction material or equipment longitudinally over the pipeline.
- The Enterprise Products representative on site will be Rodger Jablonski, Tel: (713)-562-4978 at office.

BENCHMARK:

CITY OF LEAGUE CITY MONUMENT 36
NGVD 1929, 1987 ADJ. DATUM
ELEV. 1924

NOTES:

- 100-YR. WATER SURFACE ELEVATION IN DETENTION BASIN
E = 17.937' PER MASTER DRAINAGE PLAN FOR
TUSCAN LAKES SUBDIVISION DATED 2009 BY LJA
ENGINEERING, INC.
- 25-YR. WATER SURFACE ELEVATION IN DETENTION BASIN
E = 16.321' PER MASTER DRAINAGE PLAN FOR
TUSCAN LAKES SUBDIVISION DATED 2009 BY LJA
ENGINEERING, INC.
1. ALL T.C. ELEVATIONS SHOWN ON PLAN AND PROFILE
ARE BASED ON 6" CURB.
2. WATER LINE WITH MECHANICAL JOINT SHALL BE
CONSTRUCTED AS PER CITY OF LEAGUE CITY
STANDARDS.
3. MANHOLE RIM ELEVATIONS SHOWN ON PLAN ARE
APPROXIMATE ONLY. UTILITIES CONTRACTOR SHALL
ADJUST MAN HOLE RIM TO 0.3' ABOVE FINISHED
GRADE.
4. REFER TO TRAFFIC CONTROL LAYOUT SHEET FOR
SIDEWALK, WHEELCHAIR RAMP AND SIGNAGE
LOCATIONS.
5. WATER LINE AND SANITARY SEWER CROSSING: ONE
FULL SECTION OF WATER LINE JOINT CENTERED AT
SANITARY MAIN CROSSING W/APPROVED RESTRAINED
JOINTS. MINIMUM OF ONE FULL JOINT SECTION OF
SANITARY SEWER JOINT (PSI 150 LINED DUCTILE IRON
OR GREEN PVC PIPE) CENTERED AT WATER LINE
CROSSING W/APPROVED RESTRAINED JOINTS FOR
WATER LINE AND SANITARY SEWER (NO SEPARATE
PAY).
6. PAVING CONTRACTOR SHALL TAKE EXTREME CAUTION
IN SUBGRADE MANIPULATION IN THIS AREA. STORM
SEWER PIPE IS IN OR WITHIN 6" (SIX INCHES) OF
SUBGRADE.
7. THE CONTRACTOR SHALL FIELD VERIFY ALL EXISTING
UTILITIES PRIOR TO CONSTRUCTION.
8. CAUTION: THERE ARE EXISTING UTILITIES WITHIN THE
PROJECT AREA. CONTRACTOR SHALL FIELD VERIFY
THE LOCATION OF ALL EXISTING UTILITIES AFFECTING
PROPOSED UTILITIES PRIOR TO CONSTRUCTION. IN
THE EVENT OF CONFLICT BETWEEN EXISTING UTILITIES
AND PROPOSED UTILITIES, THE CONTRACTOR SHALL
SUSPEND CONSTRUCTION IN THE VICINITY OF THE
CONFLICT AND SHALL COMMENCE ONLY UPON
AUTHORIZATION BY ENGINEER OR OWNER.

RECORD DRAWING

I HEREBY CERTIFY THAT THIS DRAWING
REFLECTS THE IMPROVEMENTS CONSTRUCTED
AS TO SIZE, LOCATION, AND GRADE; AND
THAT THE CONSTRUCTION WAS IN SUBSTANTIAL
COMPLIANCE WITH THE CONTRACT DOCUMENTS.

CONTRACTOR: *[Signature]* DATE: 4/5/17
TITLE: *P/M*

RECORD DRAWING

I HEREBY CERTIFY THAT THIS DRAWING
REFLECTS THE IMPROVEMENTS CONSTRUCTED
AS TO SIZE, LOCATION, AND GRADE; AND
THAT THE CONSTRUCTION WAS IN SUBSTANTIAL
COMPLIANCE WITH THE CONTRACT DOCUMENTS.

CONTRACTOR: *[Signature]* DATE: 3/2/17
TITLE: *P/M*

DATE	REVISION	BY

GALVESTON COUNTY MUNICIPAL
UTILITY DISTRICT NO. 44

TUSCAN LAKES SF 50-6 SE

WATER & SANITARY
SEWER LAYOUT

LJA Engineering, Inc.
2929 Briarpark Drive Phone 713.953.5200
Suite 600 Fax 713.953.5026
Houston, Texas 77042 FRN - F-1386

LJA PROJECT NO.: 1788-6050 & 1788-6050D
DESIGNED BY: M.E.F. DRAWN BY: C.L.E. DATE: APRIL 2016

DRAWING SCALE
SCALE: 1" = 100'
SHEET NO. 04 of 31

