



▷ 11011 Richmond Avenue | Suite 200 | Houston, TX 77042
Main 713.965.9996 + Fax 713.965.0044 + TBPE Firm F-11278

▷ HRGREEN.COM

July 10, 2017

Mrs. Candace Blalock
Engineering Department
500 West Walker Street
League City, TX 77573

RE: Proposal for Asphalt Overlay Improvements for:
Package #3: Various Streets West of Railroad and Shellside

Dear Mrs. Blalock:

HR Green is pleased to submit this proposal in the amount of \$151,388.00 for performing plans preparation, survey, bid-phase and construction phase services for the above referenced project. The project includes engineering design phase and construction phase services for an asphalt overlay project for various streets in the Shellside Area and West of the Railroad (Package #3).

This proposal is based on our understanding of the project as discussed with your staff and from site visits to the project. This proposal presents a general overview with preliminary construction cost estimate, scope of service and proposed fee.

GENERAL OVERVIEW

The limits for Package #3 include the following:

- Various Streets West of Railroad, East of Hwy 3 and North of Main Street. The approximate length of Mill & Overlay operations is 12,001 LF. The existing roadway consists of 30 foot wide open ditch asphalt pavement with roadside ditches.
- Various Streets within the Shellside Subdivision. The approximate length of Mill & Overlay operations is 5,883 LF. The existing roadway consists of 30 foot wide asphalt pavement with roadside ditches and curb and gutter.
- Preliminary Construction Cost Estimate for Package #3 is \$1,464,251.51 (with a 10% contingency).

The proposed pavement improvements will include a 3-inch Asphalt Overlay with base repair in select areas. The project will require Topographic Survey.

PROPOSED FEE

The proposed fee for Design Phase, Bid Phase Services, Construction Phase Services, Topographic Survey is \$151,388.00 (see Attachment "A"). As in our previous contract, Design Phase and Construction Phase services are based on lump sum fees and hourly charges will be based on raw labor rates times a multiplier of 3.10. Reimbursable expenses will be charged at cost plus 10%, and mileage will be charged at the prevailing federal rate.

SCOPE OF SERVICES

I. Design Phase Services and Bid-Phase Services

- Prepare Title Sheet with project limits
- Prepare Summary of Quantities sheet
- Prepare existing and proposed Typical Sections
- Prepare driveway taper details
- Survey layout sheets
- Prepare roadway plan sheets for open ditch and curb & gutter sections.
- Prepare Base Repair Detail to be used in select areas in need of base repair.
- Include TxDOT standard Traffic Control Detail sheets to be used for one-lane closure pavement operations. This does not include development of traffic control plan sheets or detour plan sheets.
- Prepare project layout sheet indicating the limits of the project.
- Pavement Markings for Stop Bars and Blue Reflector Fire Hydrant Markers at select locations.
- Attend monthly progress meetings
- Prepare engineers opinion of probable construction cost, bid documents and specification and attend Pre-Bid meeting.
- Assist the City in obtaining bids for the project.
- Make construction documents available on CivCast for vendor distribution.
- Provide information to and answer questions from bidders concerning construction documents.
- Evaluate the bids and low bidder qualifications and make recommendations to the City for the award of contract.
- Prepare five (5) contract document sets for execution by the successful Contractor.
- Review Contract documents provided by the Contractor and submit to the City for further execution.

II. Construction Phase Services

- Coordinate with the City and attend Pre-Construction meeting
- Prepare meeting minutes for the pre-construction meeting and provide copies to all attendees.
- Provide construction administration services for the project.
- Assist the City during construction phase.
- Review and respond accordingly to all submittals and RFI's.
- Prepare change orders necessitated by field conditions.
- Review contractor's pay estimates, evaluate completed work, and make payment recommendations to the City.
- Assist the City in conducting final observation of the project. Coordinate with the City and the Contractor on the punch list items identified in the final inspections.
- Assist the City with project close-out, conduct a final observation of the project and make recommendation for Final Payment on the Project.
- Visit the site at appropriate intervals to observe construction progress and quality of work and to determine if the work is proceeding in accordance with the plans.
- Provide one (1) set of reproducible record plans based on the red lined drawings provided to HR Green by the Contractor.



Mrs. Candace Blalock
July 10, 2017

- HR Green is not responsible for the means, methods, techniques, sequence of procedures of construction selected by the Contractor(s) or the safety precautions and programs incident to the work of the Contractor(s). HR Green is not responsible for the failure of the Contractor to perform the work in accordance with the construction documents. During site visits and on the basis of on-site observations HR Green will keep the City informed of the progress of the work, and will endeavor to identify to the City any defects or deficiencies in such work when they are observed.

III. Not Included in Scope:

- Drainage Study
- Drainage Plans
- Detailed measurements and investigations during construction phase are not part of this task.
- Full time site representation and inspection services during construction phase are not part of this task.
- Construction testing is not included in this proposal. It is our understanding that the City of League City will contract directly with a testing firm to perform testing services.

HR Green appreciates the opportunity to submit this proposal and we look forward to working with you and your staff on this important project. Please call should you have any questions or comments.

Sincerely,

HR GREEN, INC.

A handwritten signature in blue ink, appearing to read 'Stephen Sparks', is written over the company name.

Stephen Sparks, PE

Vice President

Attachments

ATTACHMENT "A" - LEVEL OF EFFORT (HR GREEN, INC)

METHOD OF PAYMENT: LUMP SUM

PACKAGE #3: SHELLSIDE AND WEST OF RAILROAD & EAST OF HWY 3 VARIOUS STREETS ASPHALT OVERLAY

TASK DESCRIPTION	PRINCIPAL/ DEPARTMENT MANAGER	SENIOR PROJECT MANAGER	SENIOR ENGINEER	PROJECT ENGINEER	SENIOR ENGINEER TECHNICIAN	CADD TECHNICIAN	CLERICAL	TOTAL LABOR HRS. & COSTS	NO OF DWGS	LABOR HRS PER SHEET
CONTRACT RATE PER HOUR (With 3.00 Moll.)	\$249.00	\$245.00	\$175.00	\$135.00	\$119.00	\$93.00	\$78.00			
PLANS PREPARATION										
AQUIRE AND REVIEW EXISTING DATA			2	1	1			4	N/A	N/A
SITE VISITS			4	4	4	4		16	N/A	N/A
REVIEW SURVEY TOPO (WALK-THRU)			2	8	8			18	N/A	N/A
REVIEW GEOTECHNICAL REPORT (NOT APPLICABLE)			0					0	N/A	N/A
TITLE SHEET: WITH PROJECT TITLE AND LIMITS OF PROJECT			1	1	2			4	3	1
GENERAL NOTES, SPECIFICATIONS AND PROVISIONS			1	1	2			4		
SUMMARY OF QUANTITIES SHEET			4	8	2	4		18	3	6
EXISTING TYPICAL SECTIONS			1	2	2			5	1	5
PROPOSED TYPICAL SECTIONS (OPEN DITCH AND CURB AND GUTTER)(2 SHEETS)			4	6	10			20	2	10
BASE REPAIR DETAIL SHEET			1	2	2	3		8	1	8
DRIVEWAY DETAILS SHEETS (2 submittals)			1	1	2	3		7	1	7
SURVEY CONTROL SHEETS: WITH BENCHMARKS AND PROJECT CONTROL (8 SHEETS)			1	2	2	3		8	8	1
SHEET LAYOUT (2 SHEETS - SHELLSIDE AND RAILROAD)			1	2	1	8		12	2	6
ROADWAY PLAN ONLY SHEETS (DB)(Scale: H 1"=20' Full, 1"=40' Half)(25 sheets-2 submittals)			32	64	100	140		336	25	13
TRAFFIC CONTROL STANDARD DETAILS: TxDOT TCP STANDARDS (11 SHEETS)			1	2	2	3		8	11	1
CONSTRUCTION PROJECT SIGN (1 SHEET)			1		2			3	1	3
PAVEMENT MARKING DETAILS (1 SHEET)			1	1	2			4	1	
BLUE REFLECTIVE MARKERS DETAILS (1 SHEET)			1	1	2			4	1	
COMPUTE & TABULATE REMOVAL QUANTITIES (2 submittals)			4	16	2			22		
COMPUTE & TABULATE ROADWAY QUANTITIES (2 submittals)			4	16	2			22		
COMPUTE MISCELLANEOUS QUANTITIES, ETC.			4	16	1			21		
QA/QC PREPARATION \ COMMENT RESPONSES (2 submittals)		1	4	16	1			22		
CONSTRUCTION COST ESTIMATE		1	8	8	4			21		
HOURS SUB-TOTALS	0	2	83	178	156	168	0	587	60	
CONTRACT RATE PER HOUR	\$249.00	\$245.00	\$175.00	\$135.00	\$119.00	\$93.00	\$78.00			
TOTAL LABOR COSTS	\$0.00	\$490.00	\$14,525.00	\$24,030.00	\$18,564.00	\$15,624.00	\$0.00	\$73,233.00		
% DISTRIBUTION OF STAFFING	0.00%	0.34%	14.14%	30.32%	26.58%	28.62%	0.00%			
SUBTOTAL PLANS PREPARATION								\$73,233.00		

TASK DESCRIPTION	PRINCIPAL/ DEPARTMENT MANAGER	SENIOR PROJECT MANAGER	SENIOR ENGINEER	PROJECT ENGINEER	SENIOR ENGINEER TECHNICIAN	CADD TECHNICIAN	CLERICAL	TOTAL LABOR HRS. & COSTS	NO OF DWGS	LABOR HRS PER SHEET
BID PHASE SERVICES										
PREPARE PROJECT BID MANUAL AND DOCUMENTS			8	8			1	17	N/A	N/A
UPLOAD PLANS TO CIVCAST			2				1	3		
ATTEND PRE-BID MEETING, ANSWER RFI's, PREPARE ADDENDUMS IF NECESSARY			8					8	11	1
EVALUATE BID TABULATIONS, VERIFY LOW BIDDER QUALIFICATIONS, AWARD LETTER			8	8				16	2	8
HOURS SUB-TOTALS	0	0	26	16	0	0	2	44	13	
CONTRACT RATE PER HOUR	\$249.00	\$245.00	\$175.00	\$135.00	\$119.00	\$93.00	\$78.00			
TOTAL LABOR COSTS	\$0.00	\$0.00	\$4,550.00	\$2,160.00	\$0.00	\$0.00	\$156.00	\$6,866.00		
% DISTRIBUTION OF STAFFING	0.00%	0.00%	59.09%	36.36%	0.00%	0.00%	4.55%			
SUBTOTAL BID PHASE SERVICES								\$6,866.00		

TASK DESCRIPTION	PRINCIPAL/ DEPARTMENT MANAGER	SENIOR PROJECT MANAGER	SENIOR ENGINEER	PROJECT ENGINEER	SENIOR ENGINEER TECHNICIAN	CADD TECHNICIAN	CLERICAL	TOTAL LABOR HRS. & COSTS	NO OF DWGS	LABOR HRS PER SHEET
CONSTRUCTION PHASE										
ATTEND PRE-CONSTRUCTION MEETING			4					4	11	0
ATTEND CONSTRUCTION PROGRESS MEETINGS, AS NEEDED			6					6	6	1

REVIEW SHOP DRAWINGS AND SUBMITTALS			3					3	2	2
RESPOND TO RFIS			3					3	3	1
ASSIST LEAGUE CITY CONSTRUCTION ENGINEER/INSPECTOR			3					3	3	1
ATTEND FINAL WALK THROUGH & PREPARE LETTER OF SUBSTANTIAL COMPLETION			6					6		
PREPARE AS-BUILT DRAWINGS			1		8			9	2	5
HOURS SUB-TOTALS	0	0	26	0	8	0	0	34	27	
CONTRACT RATE PER HOUR	\$249.00	\$245.00	\$175.00	\$135.00	\$119.00	\$93.00	\$78.00			
TOTAL LABOR COSTS	\$0.00	\$0.00	\$4,550.00	\$0.00	\$952.00	\$0.00	\$0.00	\$5,502.00		
% DISTRIBUTION OF STAFFING	0.00%	0.00%	59.09%	0.00%	18.18%	0.00%	0.00%			
SUBTOTAL CONSTRUCTION PHASE SERVICES								\$5,502.00		

TASK DESCRIPTION	PRINCIPAL/ DEPARTMENT MANAGER	SENIOR PROJECT MANAGER	SENIOR ENGINEER	PROJECT ENGINEER	SENIOR ENGINEER TECHNICIAN	CADD TECHNICIAN	CLERICAL	TOTAL LABOR HRS. & COSTS	NO OF DWGS	LABOR HRS PER SHEET
PROJECT MANAGEMENT										
PROJECT PROGRESS MEETINGS WITH CITY OF LEAGUE CITY (5 MEETINGS)			10					10	N/A	N/A
COORDINATION WITH CITY OF LEAGUE CITY (CONF. CALLS/EMAILS)			2					2	N/A	N/A
GENERAL PROJECT MANAGEMENT (PREPARE SUBMITTALS AND INVOICING)			8				8	16	N/A	N/A
HOURS SUB-TOTALS	0	0	20	0	0	0	8	28		
CONTRACT RATE PER HOUR	\$330.00	\$245.00	\$175.00	\$135.00	\$119.00	\$93.00	\$78.00			
TOTAL LABOR COSTS	\$0.00	\$0.00	\$3,500.00	\$0.00	\$0.00	\$0.00	\$624.00	\$4,124.00		
% DISTRIBUTION OF STAFFING	0.00%	0.00%	71.43%	0.00%	0.00%	0.00%	28.57%			
SUBTOTAL								\$4,124.00		

TASK DESCRIPTION	SUB CONSULTANT FEE							TOTAL LABOR HRS. & COSTS	NO OF DWGS	LABOR HRS PER SHEET
SUBCONSULTANT SERVICES										
SERVEY (KUO) WITH 10% MARK UP	\$55,320.00							\$55,320.00	N/A	N/A
HR GREEN 10% MARK UP FOR SURVEY PROJECT MANAGEMENT AND COORDINATION	\$5,532.00							\$5,532.00		
TOTAL LABOR COSTS								\$60,852.00		
SUBTOTAL SUBCONSULTANTS								\$60,852.00		

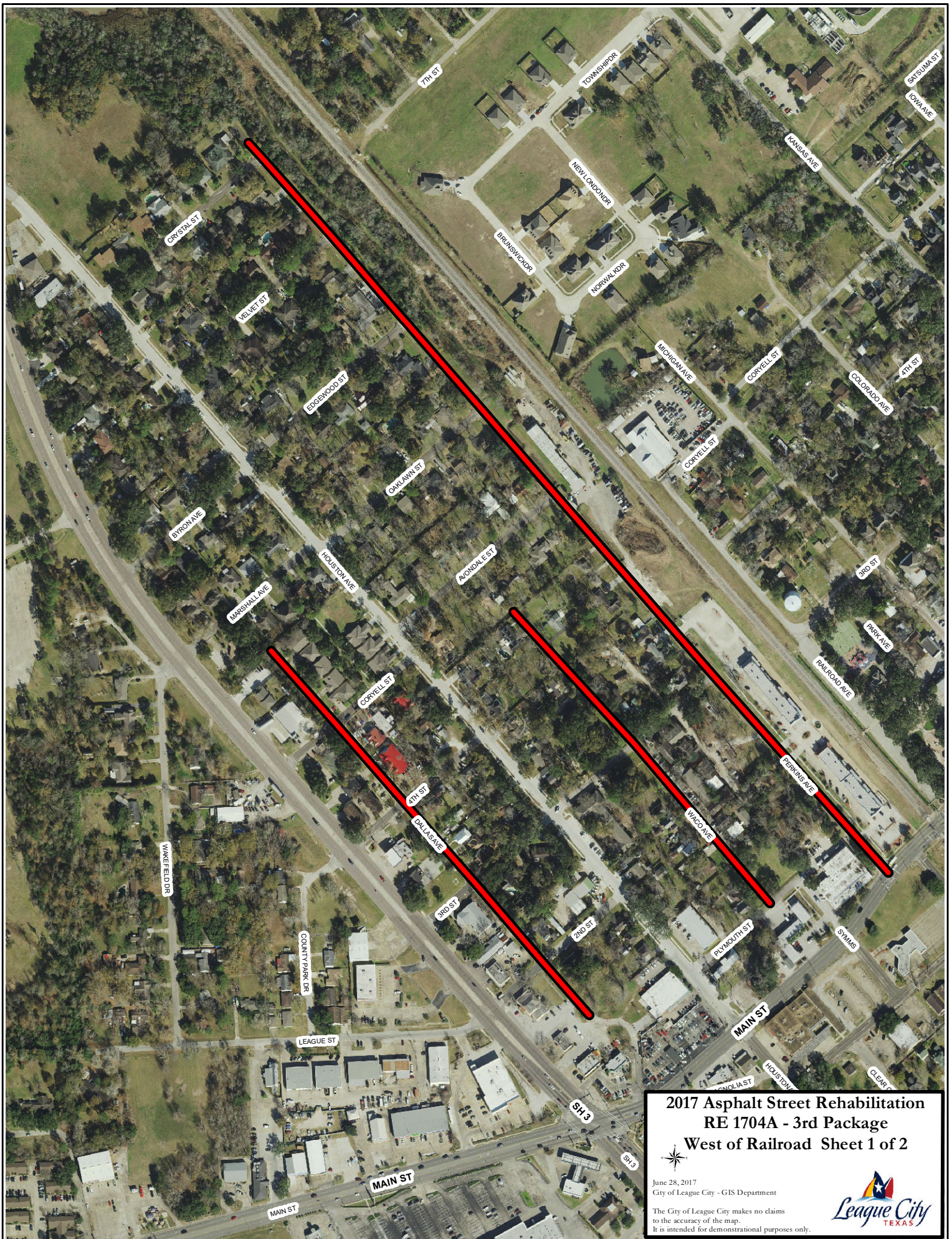
OTHER DIRECT EXPENSES	UNITS	COST/UNIT	QUANTITY					
Mileage (# of miles) (current state rate)	MI	\$0.543	800					\$434.40
CIVCAST	EA	\$100.00	1					\$100.00
Courier Services (Deliveries)	EA	\$30.00	0					\$0.00
Photocopies B/W (8.5 X 11) (Bid Book: 5 sets x 300 sheets)	EA	\$0.12	1500					\$180.00
Photocopies B/W (11 X 17) (Plans: 2 Submittals x 70)	EA	\$0.15	140					\$21.00
Photocopies B/W (22 X 34) (Plans: 2 Submittals x 70)	EA	\$0.54	140					\$75.60
Photocopies Color (8.5 X 11)	EA	\$0.80	0					\$0.00
Photocopies Color (11 X 17)	EA	\$1.50	0					\$0.00
Blackline Prints (11" X 17")	EA	\$1.10	0					\$0.00
Plots (Color on Bond)	SF	\$4.00	0					\$0.00
TOTAL OTHER DIRECT EXPENSES								\$811.00

SUMMARY	
TOTAL LABOR COSTS FOR PLANS PREPARATION	\$73,233.00
TOTAL LABOR COSTS FOR BID-PHASE SERVICES	\$6,866.00
TOTAL LABOR COSTS FOR CONSTRUCTION-PHASE SERVICES	\$5,502.00
TOTAL LABOR COSTS FOR PROJECT MANAGEMENT	\$4,124.00
TOTAL LABOR COSTS FOR SUBCONSULTANTS	\$60,852.00
OTHER DIRECT EXPENSES FOR HR GREEN, INC.	\$811.00
GRAND TOTAL	\$151,388.00

CITY OF LEAGUE CITY: PACKAGE #3 - VARIOUS STREETS ASPHALT OVERLAY AT SHELLSIDE AND RAILROAD AREA

3rd Constuction Package	Shellside	Mayhaw from Oregon to Florida	E to W	Open Ditch	316	Mill & Overlay
		Mayhaw from Virginia to Ohio	E to W	Open Ditch	320	Asphalt w/ Limestone Base
		Olive from Virginia to Ohio	E to W	Open Ditch	313	Mill & Overlay
		Olive from Ohio to Arkansas	E to W	Open Ditch	317	Mill & Overlay
		Peach from Ohio to Kentucky	E to W	Open Ditch	1,302	Mill & Overlay
		Peach from Kentucky to E. Dead End	E to W	Open Ditch	280	Mill & Overlay
		Strawberry from Virginia to Ohio	E to W	Open Ditch	309	Mill & Overlay
		Virginia from N. Dead End to Mulberry	N to S	Open Ditch	656	Mill & Overlay
		Virginia from Mulberry to Peach	N to S	Open Ditch	605	Mill & Overlay
		Virginia from Peach to Pear	N to S	Open Ditch	490	Asphalt w/ Limestone Base
		Virginia from Pear to S. Dead End	N to S	Open Ditch	964	Mill & Overlay
		Arkansas from Olive to Peach	N to S	Open Ditch	354	Mill & Overlay
		Arkansas from 1/2 Block North of Pear to S. Dead End	N to S	Open Ditch	1,135	Mill & Overlay
		Maryland from N. Dead End to Peach	N to S	Open Ditch	277	Mill & Overlay
		Maryland from Peach to Pear	N to S	Open Ditch	356	Asphalt w/ Limestone Base
		Maryland from Pear to FM 646	N to S	Open Ditch	1,089	Mill & Overlay
		Oklahoma from Peach to FM 646	N to S	Open Ditch	1,462	Mill & Overlay
		Kentucky from N. Dead End to FM 646	N to S	Open Ditch	1,765	Mill & Overlay
	West of RR & East of Hwy 3	Dallas from behind El Centinela to Dead End	N to S	Curb & Gutter	1,661	Mill & Overlay
		Waco from Plymouth to Dead End	N to S	Open Ditch	1,160	Mill & Overlay
		Perkins from E. Main to Dead End	N to S	Open Ditch	3,062	Mill & Overlay
				Total	18,193	

Preliminary Engineer's Opinion of Probable Construction Costs						
PRELIM						
For City of League City - Package 3 Asphalt Overlay						
Prepared By: HR Green, Inc.						
Date Prepared: July 3, 2017						
HARRIS CO.	A. Site Preparation Items					
SPEC	Item	Description	Quantity	Unit	Unit Price	Total Price
102	1	Clearing and Grubbing, Complete in Place, In accordance with Drawings and Specifications	181.9	STA	\$200.00	\$36,380.00
309	2	Milling Existing Pavement (Existing Rdwy & Drwy), In accordance with Drawings and Specifications	37,838	SY	\$3.25	\$122,973.50
Subtotal for Site Preparation						\$159,353.50
B. Pavement Items						
	Item	Description	Quantity	Unit	Unit Price	Total Price
104	3	Remove Gravel and Roadbed material on Kalichi Road (all depths), In accordance with Drawings and Specifications	2591	SY	\$12.00	\$31,092.00
230	4	8" Base Crushed Limestone (Type A or D)(Grade 1), in accordance with Drawings and Specifications	2591	SY	\$20.00	\$51,820.00
220	5	6" Lime Treated Subgrade, in accordance with Drawings and Specifications	2591	SY	\$3.00	\$7,773.00
110	6	Lime (Hydrated Lime - Dry), in accordance with Drawings and Specifications	3.88	Tons	\$200.00	\$776.00
340	7	Hot Mix - Hot Laid Asphaltic Concrete Pavement (Surface) (Varies 1-inch)(110lbs/SY), Complete in Place, In accordance with Drawings and Specifications	2100	Tons	\$100.00	\$210,000.00
340	8	Hot Mix - Hot Laid Asphaltic Concrete Pavement (Level-up) (Varies 1-inch)(110lbs/SY), Complete in Place, In accordance with Drawings and Specifications	2100	Tons	\$100.00	\$210,000.00
340	9	Hot Mix - Hot Laid Asphaltic Concrete Pavement (Surface) (Varies 1.5-inch)(165lbs/SY), Complete in Place, In accordance with Drawings and Specifications	214.0	Tons	\$100.00	\$21,400.00
340	10	Hot Mix - Hot Laid Asphaltic Concrete Pavement (Level-Up), (Varies 1.5-inch)(165lbs/SY) Complete in Place, In accordance with Drawings and Specifications	214.0	Tons	\$115.00	\$24,610.00
310	12	Tack Coat (MC-30)(0.25Gal/SY), Complete in Place, In accordance with Drawings and Specifications	4,042	Gal	\$3.00	\$12,126.00
310	11	Prime Coat (MC-30)(0.10Gal/SY), Complete in Place, In accordance with Drawings and Specifications	10,109	Gal	\$4.00	\$40,436.00
251	13	Base Repair (At Select Areas)(10" Black Base)(1100 lbs/SY), Complete in Place, In accordance with Drawings and Specifications	4162	Tons	\$115.00	\$478,630.00
TXDOT 134	14	Backfill Material, Reclaimed Asphalt Pavement (RAP) for Shoulder Dressing, In accordance with Drawings and specifications	181.9	STA	\$250.00	\$45,475.00
Subtotal for Pavement Items						\$1,134,138.00
C. Construction Traffic Control Items						
	Item	Description	Quantity	Unit	Unit Price	Total Price
671, 672	15	Temporary Traffic Handling and Control & Flagmen	5	Mo.	\$5,000.00	\$25,000.00
Subtotal for Construction Traffic Control Items						\$25,000.00
D. Signing and Pavement Marking Items						
	Item	Description	Quantity	Unit	Unit Price	Total Price
660	16	2-Way Blue Reflective Marker	31	Ea.	\$140.00	\$4,340.00
660	17	Thermo Pvmt Marking (24-inch)(White)(Solid), Complete in Place, In accordance with Drawings and Specifications	574	LF	\$10.00	\$5,740.00
660	18	Thermo Pvmt Marking (8-inch)(Yellow)(Solid), Complete in Place, In accordance with Drawings and Specifications	243	LF	\$0.55	\$133.65
663	19	Reflective Yellow Pavement Markers (4-inch)(2-Way)(Type II A-A), Complete in Place, In accordance with Drawings and Specifications	14	Ea.	\$5.50	\$77.00
DWGS	20	City Project Signs, Complete in Place, In accordance with Drawings and Specifications	2	Ea.	\$706.67	\$1,413.34
Subtotal for Sign and Pavement Marking Items						\$11,703.99
E. Supplemental Items						
	Item	Description	Quantity	Unit	Unit Price	Total Price
473	21	Adjust Exist Manhole to grade, In accordance with drawings and Specifications	10	Ea.	\$1,000.00	\$10,000.00
473	22	Adjust Existing Water Valves to grade, In accordance with Drawings and Specifications	10	Ea.	\$1,000.00	\$10,000.00
	23	Curb & Gutter concrete Raising/Leveling at select locations, shall be field verified and approved by City Engineer, in accordance with Drawings and Specifications	300	LF	\$20.00	\$6,000.00
Subtotal for Supplemental Items						\$26,000.00
A. Subtotal for Site Preparation						\$159,353.50
B. Subtotal for Pavement Items						\$1,134,138.00
C. Subtotal for Construction Traffic Control Items						\$25,000.00
D. Subtotal for Sign and Pavement Marking Items						\$11,703.99
E. Subtotal for Supplemental Items						\$26,000.00
Sub Total						\$1,356,195.49
10% Contingency						\$135,619.55
Grand Total						\$1,491,815.00



**2017 Asphalt Street Rehabilitation
RE 1704A - 3rd Package
West of Railroad Sheet 1 of 2**

June 28, 2017
City of League City - GIS Department

The City of League City makes no claims
to the accuracy of the map.
It is intended for demonstrational purposes only.



