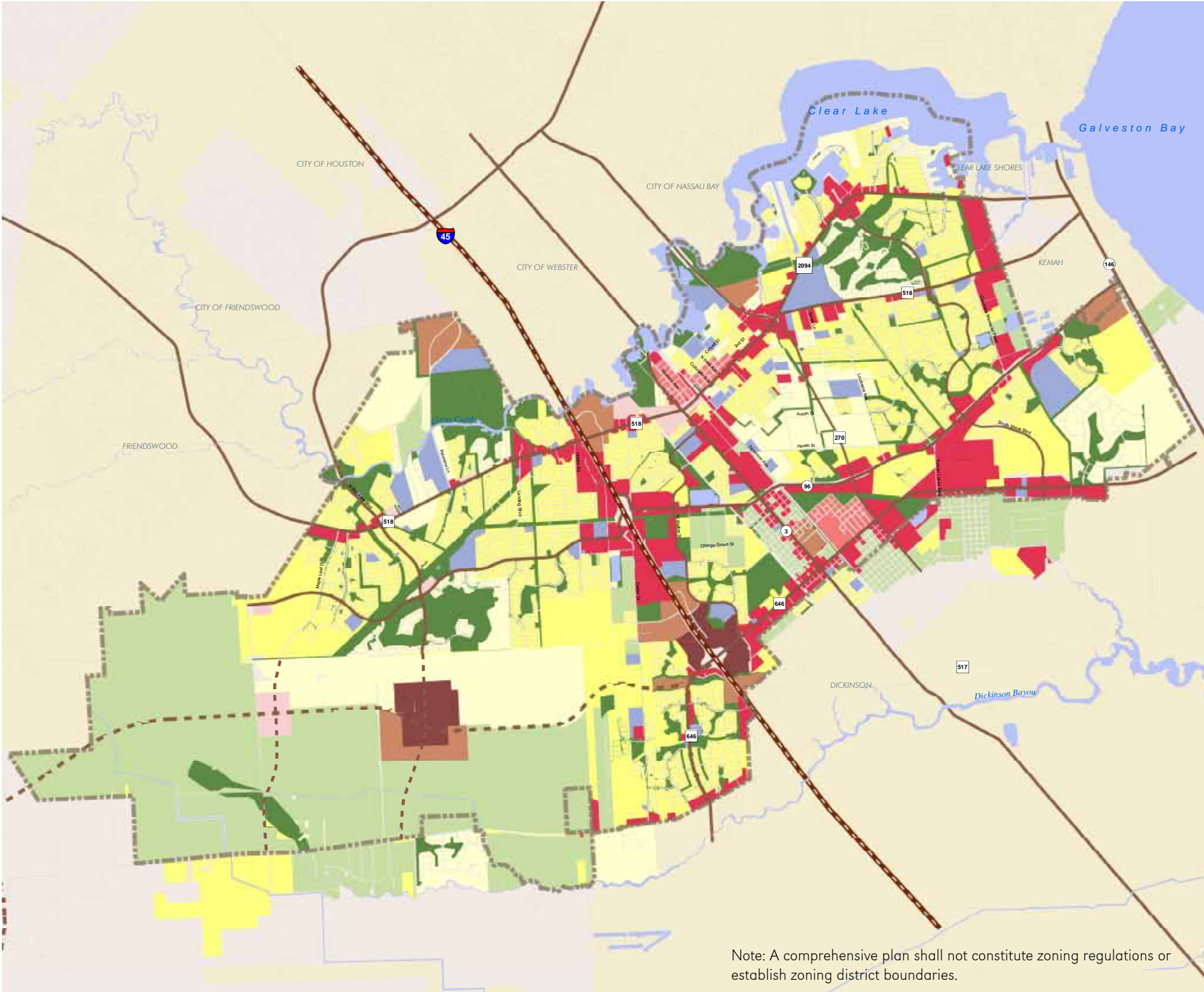


Figure 5.1 Future Land Use Plan



Impacts

Dwelling Units	77,446
Population	178,875
Employment	54,931
Jobs to Housing Balance	0.71
Water (MGD)	28.53
Sewer (MGD)	24.37

Land Use Acreages

Rural/Estate	27.2%
Suburban Residential	14.7%
Suburban Village	0.7%
Enhanced Auto Dominant Residential	27.0%
Enhanced Auto Dominant Commercial	8.8%
Suburban Commercial	0.9%
Urban Low	3.0%
Urban High	1.6%
Public/Institutional	3.5%
Parks/Open Space/Natural	12.7%
Total	100.0%

Legend

- Rural/Estate Residential
- Park/Open Space/Natural
- Suburban Residential
- Suburban Village
- Suburban Commercial
- Enhanced Auto Dominant Residential
- Enhanced Auto Dominant Commercial
- Urban High
- Urban Low
- Public/Institutional