



Cotton Logistics Catering Services

PROPERTY: LEAGUE CITY, TX



Table of Contents



TAB A: 5.3 QUALIFICATIONS AND EXPERIENCE

- 5.3.1 INTRODUCTION
- 5.3.2 RECENT EXPERIENCE
- 5.3.3 FACILITY DESCRIPTION
- 5.3.4 FEMA EXPERIENCE

TAB B: 5.4 PROJECT METHODOLOGY

- 5.4.1 METHODOLOGY
- 5.4.2 CLARIFICATION OF SERVICES
- 5.4.3 SAMPLE MENU
- 5.4.4 BAG LUNCH INFORMATION
- 5.4.5 CITY RESPONSIBILITIES
- 5.4.6 MOBILE KITCHEN PLANS



Table of Contents



TAB C: 5.5 RATES, FEES AND EXPENSES

5.5.1 FLAT RATE PER MEAL
ADDITIONAL SERVICES

TAB D: 5.6 REFERENCES

5.6.1 REFERENCES

TAB E: 5.7 CONFLICT OF INTEREST

CONFLICT OF INTEREST
QUESTIONNAIRE



Executive Summary



Cotton Logistics is thrilled for the opportunity to provide League City a Proposal that outlines the services we hope to provide. As a premier provider of emergency food services and other support services, we give our commitment to exceed expectations.

Building upon our existing reputation developed over years of the highest quality service, we pledge to provide the requested emergency services in a manner that will stand out in both execution and quality. We firmly believe that our service and support will reflect positively on both Cotton Logistics and League City.



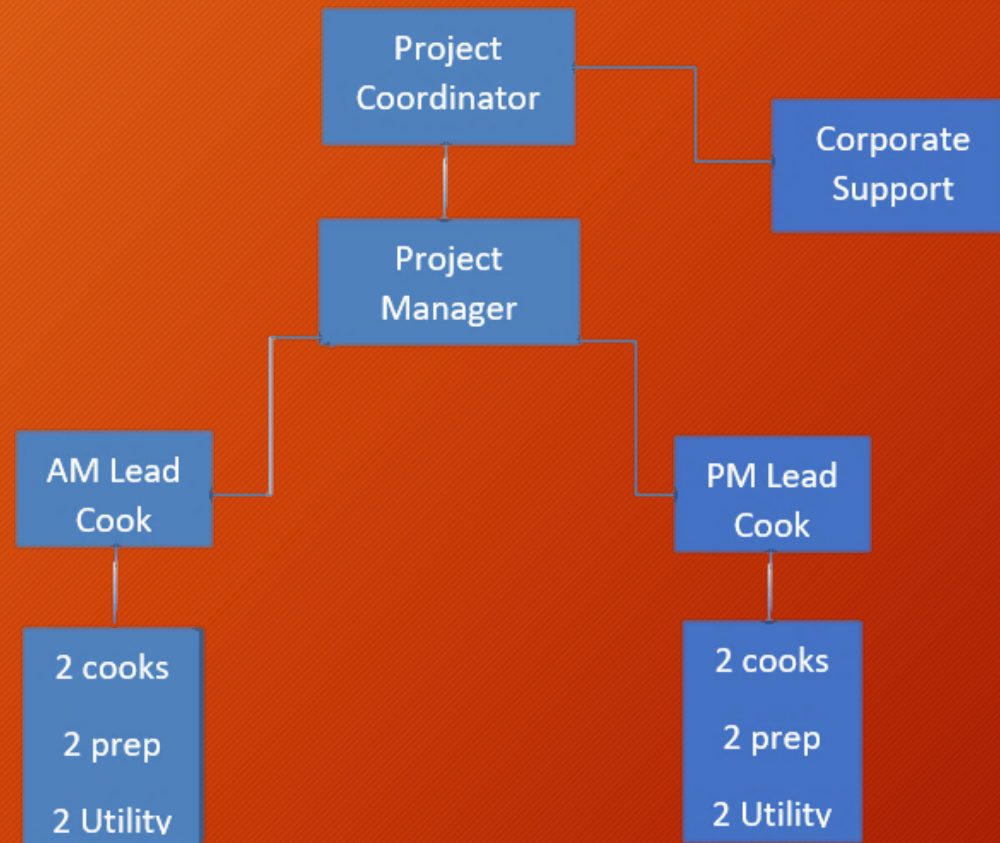
5.3.1 Qualifications



Cotton Logistics is a division of Cotton Commercial USA, a turnkey disaster recovery and emergency response company with over 20 years in the disaster recovery business. Cotton Commercial USA has offices in Houston, Dallas, Atlanta and satellite locations across the US. Cotton Logistics has offices in Houston, Midland and Lake Charles, LA, all of which are capable of supporting League City regardless of disaster geography involved in an event.

Supporting League City in the event of an emergency would be a Project Coordinator with NIMS training to interact with incident command, a project manager to ensure operational efficiency and proficiency, cooks, utility workers and back office support. All assigned associates will have state required food service certifications and all assets will be permitted by the state of Texas. See Appendix A for resumes of current Cotton management typical of those who will be assigned to an emergency.

5.3.1 Qualifications





5.3.2 Experience



The following is a list of recent experience in the emergency food services industry:

- March 2014 – Y City Oil Spill - Port O'Connor, TX – 750 meals three times per day for one month. Services included three remote service locations, delivery to Matagorda Island and delivery via ATV, VIP meal service, Incident Command responsibilities, etc... Oil spill event
- November 2015 - Circuits of the Americas – Austin, TX - 450 meals per day for approximately three weeks. Straight line wind event.
- July 2016 – Grand River Dam Authority – Chouteau, OK - 150 meals per day for three months. Turbine fire and restoration event
- January 2017 – International Paper – Cantonment, FL – 300 meals per day for approximately two weeks. Plant explosion.
- February 2017 – Phillips 66 – Paradis, LA – 175 meals per day for two weeks. Pipeline explosion.



5.3.3 Facility



Cotton Logistics has two locations from which it could service League City from a food service perspective in the event of an emergency.

In our Katy, TX facility we have a complete kitchen with cooler freezer and dry storage facilities that could service up to 500 persons for three meals a day. Additionally, this location acts as the staging area for all of our mobile assets.

Our Lake Charles, LA facility with the same amenities as our primary location, also acts as a staging area and will act as our back-up location should our Katy facility be out of commission or inaccessible.

Our methodology, as you will see in the upcoming information, does not include preparing the meals off site at either of these facilities and shipping and serving on site. These facilities will act as a “commissary” for our mobile kitchens which will be on site and preparing food fresh on location.



5.3.4 FEMA



Cotton is in compliance with all requirements of the Code of Federal Regulations (C.F.R.) Title 2 Part 215 and title 44 Subpart 13.16.

Cotton will utilize clear, concise and accurate documentation and billing; inhouse field accountants will utilize crew activity sheets, PMR's, work requests and change orders signed off by authorized municipal representatives. They will also provide a daily expense report and allocation of assets report.

Past performance with the cities of Beaumont and Port Arthur shows that our processes work as both municipalities were reimbursed in a timely manner for our services from FEMA



5.4.1 Methodology



Food service for any disaster situation supplied by Cotton Culinary for League City will be cooked fresh on site. Assets will be deployed from our primary location, Katy, Texas, and set up at a pre-determined location. These assets will include:

- 1 – 53 foot mobile Kitchen
- 1 – mobile cooler, food storage
- 1 - mobile freezer, food storage
- 1 – dry storage unit

Any ancillary items required such as grey water storage, potable water or additional generators will be supplied as required.

Deployment from the facility can happen immediately upon notification of safe access for an event with notice such a hurricane or flood event. For any no-notice event, deployment can occur no later than 12 hours with food service no later than 24 hours after a disaster has been declared.

Transit from primary location to League City is approximately two hours and food service can commence in 6 to 8 hours from deployment.



5.4.2 Clarifications



As previously mentioned, all food is to be prepared fresh on site. Groceries are to be delivered to and stored on site. Meals will be served at the requested times as follows:

6:00 AM – 8:00 AM Hot Breakfast

11:00 AM – 1:00 PM Hot or Sack Lunch

5:00 PM – 7:00 PM Hot Evening Meal

11:00 PM – 1:00 AM Hot or Sack Midnight





5.4.3 Sample Menu



ITEM	MONDAY	TUESDAY	WEDNESDAY	THURSDAY	FRIDAY	SATURDAY	SUNDAY
Egg	Scrambled Eggs	Scrambled Eggs	Scrambled Eggs	Scrambled Eggs	Scrambled Eggs	Scrambled Eggs	Scrambled Eggs
Egg	Loaded Scrambled Egg	Poached Egg	Western Scramble Egg	Loaded Scrambled Egg	Poached Egg	Western scrambled Egg	Loaded Scrambled Egg
Meat	Sausage Patties	Sausage Links	Sausage Patties	Sausage Links	Sausage Patties	Sausage Links	Sausage Patties
Meat	Bacon	Bacon	Ham	Bacon	Bacon	Country Fried Steaks	Bacon
Gravy	Sausage Gravy	Sausage Gravy	Red Gravy	Sausage Gravy	Red Gravy	White Gravy	Sausage Gravy
Bread	Biscuit / French Toast	Biscuit / Choc Chip Pancake	Biscuit / French Toast	Biscuit / Blueberry Pancake	Biscuit / French Toast	Biscuit / Banana Pancakes	Biscuit / French Toast
Potatoe	Hash Browns	Home Fries	Hash Brown Casserole	Hash Browns	Smothered Potatos	Hash Browns	Hash Browns
Grits	Grits	Cheddar Grits	Grits	Cheddar Grits	Grits	Cheddar Grits	Grits
Oatmeal	Oatmeal	Oatmeal	Oatmeal	Oatmeal	Oatmeal	Oatmeal	Oatmeal





5.4.3 Sample Menu



ITEM	MONDAY	TUESDAY	WEDNESDAY	THURSDAY	FRIDAY	SATURDAY	SUNDAY
ENTRÉE 1	Hamburger Steak w/ Onion Gravy	Chicken and Sausage Jambalaya	Beef Tacos	Meatball Marinara Sauce	Chicken Santa Fe	Roasted Pork Loin	Fried Fish
STARCH 1	Mashed Potatoes		Charro Beans	Spaghetti Pasta	Oven Roasted Reds	Scalloped Potato	Macaroni/Chees e
VEGETABLE 1	Buttered Peas	Cheesy Baked Cauliflower	Spanish Rice	Bahama Blend	Green Beans	Mixed Squash & Tomato	Roasted Vegetables
DESSERT	Assorted Cookies	Assorted Cookies	Assorted Cookies	Assorted Cookies	Assorted Cookies	Assorted Cookies	Assorted Cookies
BREAD	White Rolls	Corn Bread	Flour Tortillas	Garlic Stick	Wheat Rolls	Garlic Bread	Hushpuppies
DRINKS	SWEET & UNSWEET	SWEET & UNSWEET	SWEET & UNSWEET	SWEET & UNSWEET	SWEET & UNSWEET	SWEET & UNSWEET	SWEET & UNSWEET





5.4.3 Sample Menu



ITEM	MONDAY	TUESDAY	WEDNESDAY	THURSDAY	FRIDAY	SATURDAY	SUNDAY
ENTRÉE 1	Baked Chicken Breast W/ Sauce	Italian Meatballs	Grilled Ribeye Steak	Chicken Fajitas Beef Fajitas Peppers & Onions	Fried Catfish	BBQ Brisket	Smoked sausage Links Red Beans
ENTRÉE 2	Stuffed Bell Peppers	Italian Sausage w/ Peppers & Onions	Grilled Shrimp	Cheese Enchiladas	Chicken & Sausage Jambalaya	BBQ Ribs	Fried Chicken
STARCH 1	Wild Rice	Spaghetti Noodles	Butter & Parsily Potato's	Spanish Rice	Oven Roasted Potatoe's	Rice Pilaf	Steamed White Rice
STARCH 2	Mashed Potatoes	Oven Roasted Garlic Potatoes	Steak Fries	Charro beans	Hushpuppies	Scalloped potato's	Dirty Rice
VEGETABLE 1	Baja Blend	Fried squash & Zucchini	Seasoned Green Beans	Spiced corn	Stewed Okra n Tomatoes	Corn on the cob	Fried Okra
VEGETABLE 2	Buttered Peas	Calif blend	Sauteed Mushrooms	Queso and chips	Cheesey Baked califlower	Steamed broccoli	Glazed carrots
SALAD	Mixed Greens	Cesar Salad	Mixed Green	Mixed Greens	Creamy Coleslaw	Potato Salad	Spinach Salad
DESSERT	Apple Cobbler	Cherry Crisp	Strawberry Shortcake	Tres Leches	Bread Pudding w/ Carmel Sauce	Peach Cobbler	Brownies
BREAD	White/Wheat Rolls	Garlic Bread	White/Wheat Rolls	Flour Tortillias	Corn Bread	White/Wheat Rolls	White/Wheat Rolls





5.4.4 Delivered Meals



Sack lunches will consist of the following:

- Two sandwiches of whole meats on a variety of breads
- One bag of chips or similar side option
- One trail mix or similar snack
- One dessert style snack
- One piece of whole fruit
- Condiments
- One cutlery set to include napkin, salt and pepper
- Bottled water or canned soda

Meals can be delivered to remote or satellite locations. These meals can consist of sack lunches or can be the hot meal served at the base location. Cotton Culinary has complete SOP's that allow for all HACCP guidelines to be followed in delivery and service of complete hot meals.

With the establishment of "permanent" remote locations, Cotton Culinary can provide tent structures to provide for enclosed and conditioned service areas from which we can service crews or personnel who cannot travel to and from the base location for each meal service.



5.4.5 City Requirements



Cotton Logistics is fully self contained and can operate with little or no support from League City.

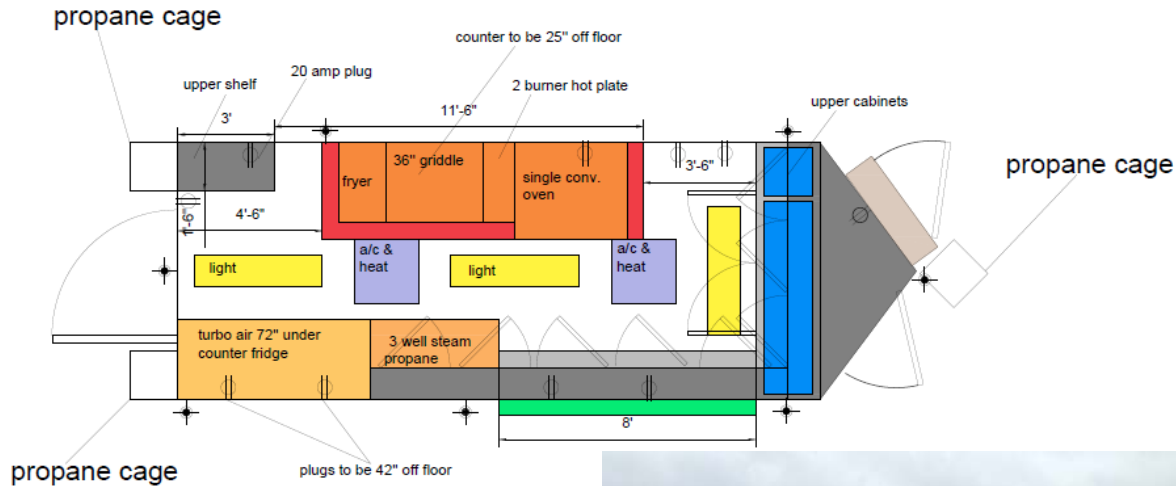
League City will be required to provide a safe and relatively secure location from which we can operate and will ultimately be responsible for our access into and out of the city during an emergency situation.

If League City could provide utilities at the site chosen for services, the cost to the city would be greatly reduced. Services required include:

- Electricity
- Potable water
- Sewage



5.4.6 Mobile Plans



- 8.5 x 20 concession
- black for exterior
- (2) a/c & heat units
- 10' commercial grease hood
- 100 amp electrical package with all plugs on there own separate circuit
- 36" generator box with slide out tray and drop leg
- 36" access door
- (2) 100 lb propane cages on rear
- 48" rear entry door
- sink package with 30 gal. fresh, 50 gal. waste, 6 gal. water heater
- city water fill box
- 8' concession window with glass and screens with flip up counter outside
- stainless steel for counter tops throughout
- (2) 7,000 lb axles with brakes
- 8' interior height
- steel wheels with radial tires
- extended tongue
- atp metal flooring
- insulated walls and ceiling
- aluminum mill finish walls and ceiling



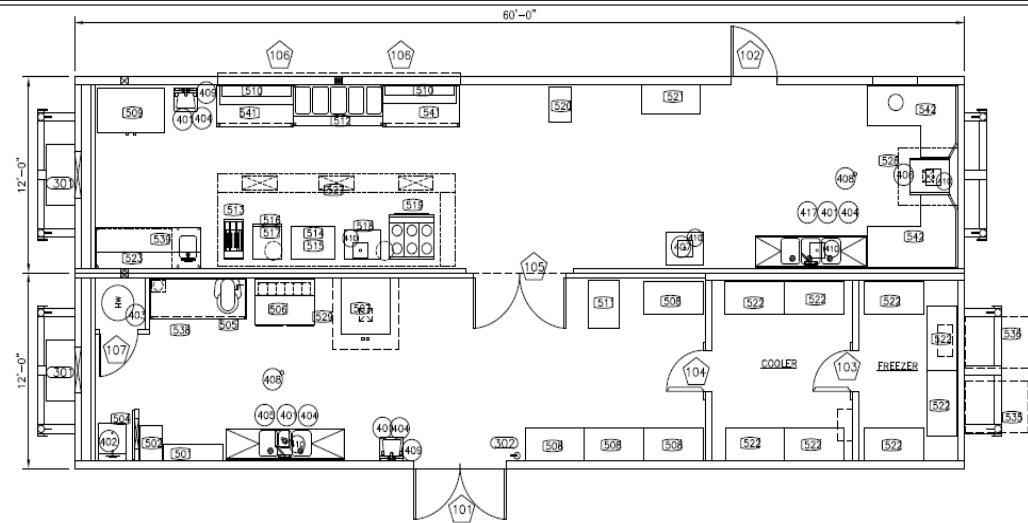


5.4.6 Mobile Plans



Cotton Logistics can use its existing relationship with several modular building manufacturers to secure modular kitchen units depending on what is in the current inventory.

Modular units of this type are readily available and can be outfitted and mobilized in a matter of weeks should the long term needs of League City outlast the temporary emergency requirements of any no notice event.



NO.	QTY.	SIZE	ITEM	DESCRIPTION	NO.	QTY.	SIZE	ITEM	DESCRIPTION
101	1	72x60	EXTERIOR	30 GAL. PRE-HANG STEEL DOOR-ROLL POLYURETHANE-FACTOR 0.00	501	1		BACK	POT RACK-CENTRAL EXCLUSIVE 43X-005
102	1	36x60	EXTERIOR	HARDWARE: PANIC W/LEVER TWIN A	502	1		BACK	PAN RACK-WALL SERIES 945-005
103	1	36x78	EXTERIOR	PAN CHANGER-TELL DOOR CLOSER	504	1		BACK	WOP. BACK-EX-TELL. VARIER 917-024
104	1	36x78	EXTERIOR	30 GAL. PRE-HANG STEEL DOOR-ROLL POLYURETHANE-FACTOR 0.00	505	1		30 QT	20 QT. W/HER-AVIS AX-420
105	1	60x90	EXTERIOR	HARDWARE: PANIC W/LEVER TWIN A	506	1		SWIVEL TABLE	W/HER-A SHELF-TWALEXEN 955-015
106	2	16x80	EXTERIOR	PAN CHANGER-TELL DOOR CLOSER	507	1		OVEN	CONVECTION OVEN-WILSON 515-555 V/44E SERIES
107	1	36x78	EXTERIOR	FREEZER DOOR-HEAT TREATED FRAME	508	4		SHELVING	DRY STORAGE SHELVING 48"x24"
108	1	36x78	EXTERIOR	HARDWARE: RASCON HARDWARE	509	1		REFRIGERATOR	DRY. DOOR-TURNING AIR 934-002
109	1	60x90	EXTERIOR	COOLER DOOR	510	2		REFRIGERATOR	REFRIGERATED UNIT W/2 DISPLAY (SHADES-SHAWNEE) 100010
110	1	60x90	EXTERIOR	HARDWARE: RASCON HARDWARE	511	1		CAN RACK	CAN RACK-WINWOLT 947-020
111	1	60x90	EXTERIOR	COOLER DOOR	512	1		HOT TAIL	HOT TAIL UNIT (2) W/200W (SHADES-SHAWNEE) 100010
112	1	60x90	EXTERIOR	HARDWARE: RASCON HARDWARE	513	1		FRYER	DRY. FRYER 35-04-FRYMASTER 300-070 SH/1E
113	1	60x90	EXTERIOR	COOLER DOOR	514	1		SHADES	PLAT. CHICKEN-WOLF WEISS40
114	1	60x90	EXTERIOR	HARDWARE: RASCON HARDWARE	515	1		SHADES	EQUIPMENT STAND FOR SHADES-SHAWNEE 100010
115	1	60x90	EXTERIOR	COOLER DOOR	516	1		SHADES	SHAWNEE 100010
116	1	60x90	EXTERIOR	HARDWARE: RASCON HARDWARE	517	1		SHADES	EQUIPMENT STAND FOR SHADES-SHAWNEE 100010
117	1	60x90	EXTERIOR	COOLER DOOR	518	1		SHADES	SHAWNEE 100010
118	1	60x90	EXTERIOR	HARDWARE: RASCON HARDWARE	519	1		SHADES	SHAWNEE 100010
119	1	60x90	EXTERIOR	COOLER DOOR	520	1		SHADES	SHAWNEE 100010
120	1	60x90	EXTERIOR	HARDWARE: RASCON HARDWARE	521	1		SHADES	SHAWNEE 100010
121	1	60x90	EXTERIOR	COOLER DOOR	522	1		SHADES	SHAWNEE 100010
122	1	60x90	EXTERIOR	HARDWARE: RASCON HARDWARE	523	1		SHADES	SHAWNEE 100010
123	1	60x90	EXTERIOR	COOLER DOOR	524	1		SHADES	SHAWNEE 100010
124	1	60x90	EXTERIOR	HARDWARE: RASCON HARDWARE	525	1		SHADES	SHAWNEE 100010
125	1	60x90	EXTERIOR	COOLER DOOR	526	1		SHADES	SHAWNEE 100010
126	1	60x90	EXTERIOR	HARDWARE: RASCON HARDWARE	527	1		SHADES	SHAWNEE 100010
127	1	60x90	EXTERIOR	COOLER DOOR	528	1		SHADES	SHAWNEE 100010
128	1	60x90	EXTERIOR	HARDWARE: RASCON HARDWARE	529	1		SHADES	SHAWNEE 100010
129	1	60x90	EXTERIOR	COOLER DOOR	530	1		SHADES	SHAWNEE 100010
130	1	60x90	EXTERIOR	HARDWARE: RASCON HARDWARE	531	1		SHADES	SHAWNEE 100010
131	1	60x90	EXTERIOR	COOLER DOOR	532	1		SHADES	SHAWNEE 100010
132	1	60x90	EXTERIOR	HARDWARE: RASCON HARDWARE	533	1		SHADES	SHAWNEE 100010
133	1	60x90	EXTERIOR	COOLER DOOR	534	1		SHADES	SHAWNEE 100010
134	1	60x90	EXTERIOR	HARDWARE: RASCON HARDWARE	535	1		SHADES	SHAWNEE 100010
135	1	60x90	EXTERIOR	COOLER DOOR	536	1		SHADES	SHAWNEE 100010
136	1	60x90	EXTERIOR	HARDWARE: RASCON HARDWARE	537	1		SHADES	SHAWNEE 100010
137	1	60x90	EXTERIOR	COOLER DOOR	538	1		SHADES	SHAWNEE 100010
138	1	60x90	EXTERIOR	HARDWARE: RASCON HARDWARE	539	1		SHADES	SHAWNEE 100010
139	1	60x90	EXTERIOR	COOLER DOOR	540	1		SHADES	SHAWNEE 100010
140	1	60x90	EXTERIOR	HARDWARE: RASCON HARDWARE	541	1		SHADES	SHAWNEE 100010
141	1	60x90	EXTERIOR	COOLER DOOR	542	1		SHADES	SHAWNEE 100010



5.5.1 Rates and Fees



PRICE MEAL (PER PERSON, 3 TIMES
PER DAY):

25 - \$107.66

50 - \$59.83

100 - \$35.92

200 - \$23.96

300 - \$19.97

PROPOSED PRICE STRUCTURE:

Day Rate for assets, fuel, labor for up to
300 people: \$4096 per day

One time mob and demob fee of
\$3076.93

Per meal cost of \$12



5.5.1 Other Services



Cotton Logistics can provide other services in conjunction with Cotton Commercial USA. Some of these functions include:

Housing

Toilets

Showers

Laundry services

Water distillation/desalination

Additionally, Cotton Commercial USA can provide complete disaster recovery and emergency response services to include:

- Fire and water restoration
- Debris removal
- Content cleaning, manipulation and inventory
- Emergency power
- Construction
- Roofing
- Environmental response



5.6.1 References



Nathan Hough – Kirby Inland Marine – 713-725-7860

David Koons – CB&I – 337-762-5269

David.G.Koons@CBI.com

Brent Beaver – Kinder Morgan – 713-369-8351

Brent_Beaver@kindermorgan.com

Chris Bachinski – Buckeye Bahamas Hub – 610-904-4674

Cbachinski@Buckeye.com



5.7 Conflict of Interest



SEE ATTACHED EXECUTED CONFLICTS OF INTEREST
QUESTIONNAIRE



Summary



Cotton Logistics is proposing both a per meal price and requested and an alternate method of a “day rate” for assets and staffing and a per meal price for the meals.

We would like the opportunity to discuss in detail our plans to execute a successful and enjoyable event and look forward to further discussions.

Thank you,

Cotton Logistics



Contact Us

Wes.Bratcher@Cottonteam.com

337-349-1450

[HTTP://COTTONLOGISTICS.COM](http://COTTONLOGISTICS.COM)

[HTTP://COTTONCULINARY.COM](http://COTTONCULINARY.COM)