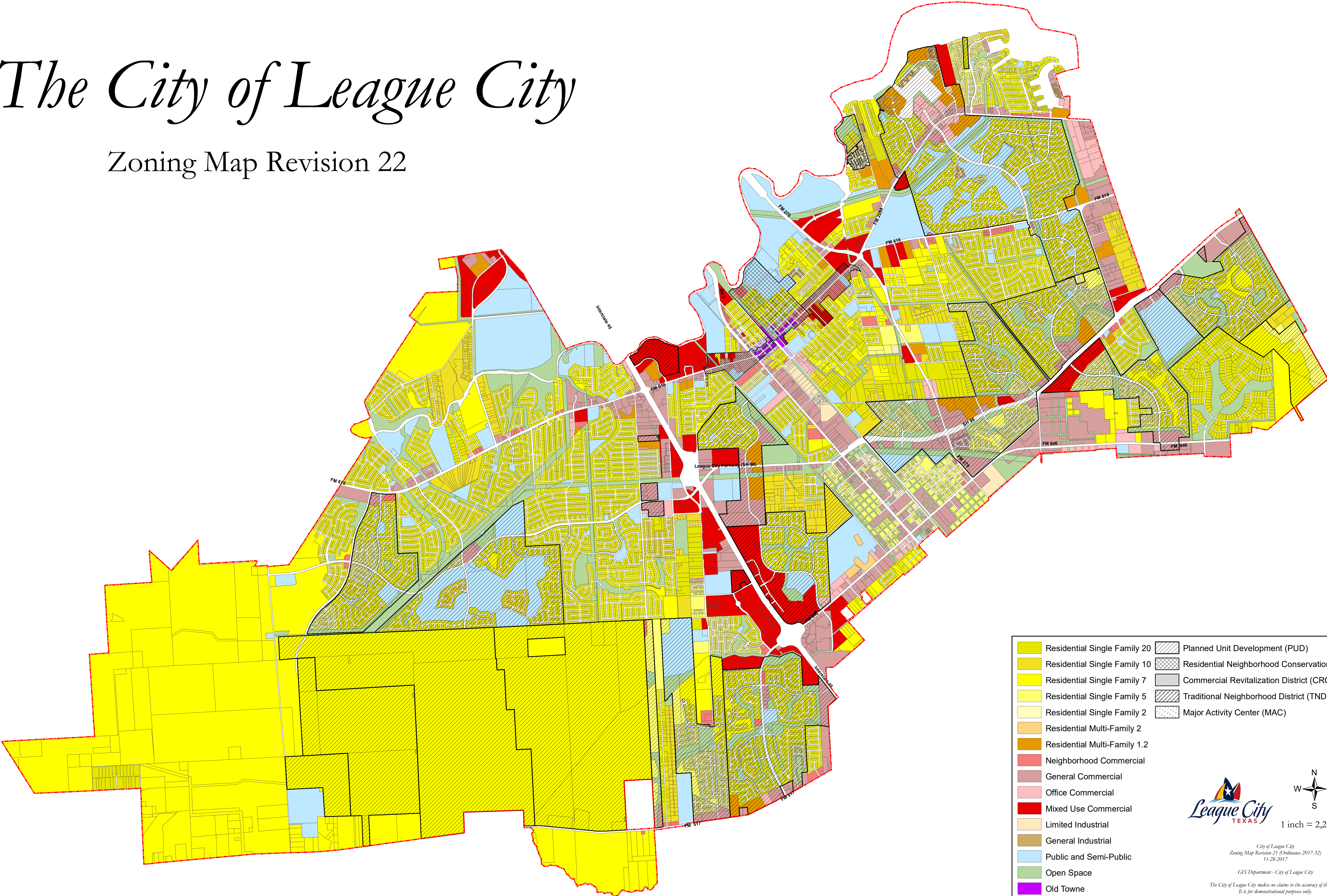


The City of League City

Zoning Map Revision 22



Residential Single Family 20

Residential Single Family 10

Residential Single Family 7

Residential Single Family 5

Residential Single Family 2

Residential Multi-Family 2

Residential Multi-Family 1.2

Neighborhood Commercial

General Commercial

Office Commercial

Mixed Use Commercial

Limited Industrial

General Industrial

Public and Semi-Public

Open Space

Old Towne

Old Towne Transition

Planned Unit Development (PUD)

Residential Neighborhood Conservation (RNC)

Commercial Revitalization District (CRC)

Traditional Neighborhood District (TND)

Major Activity Center (MAC)

City of League City

Zoning Map Revision 21 (Ordinance 2017-32)

11-28-2017

GIS Department - City of League City

The City of League City makes no claims to the accuracy of this map. It is for demonstrational purposes only.

1 inch = 2,200 feet