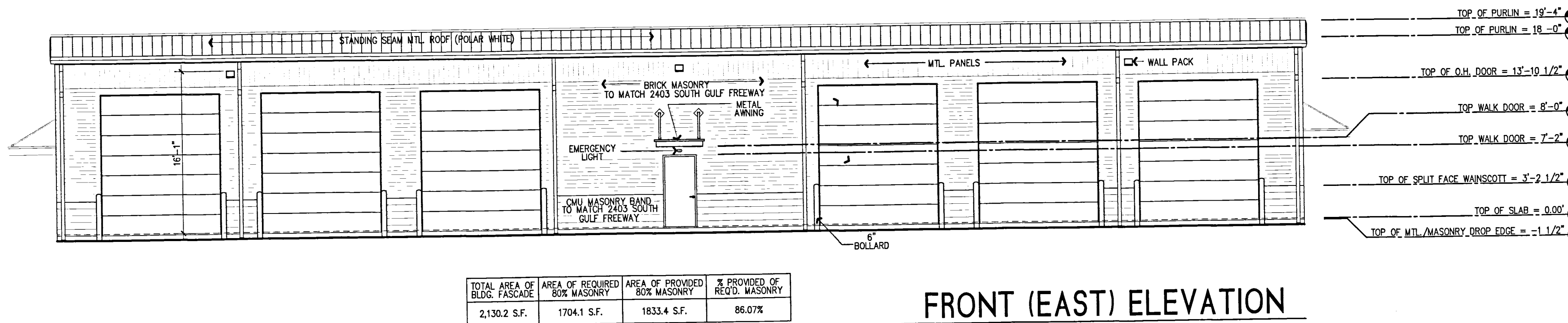
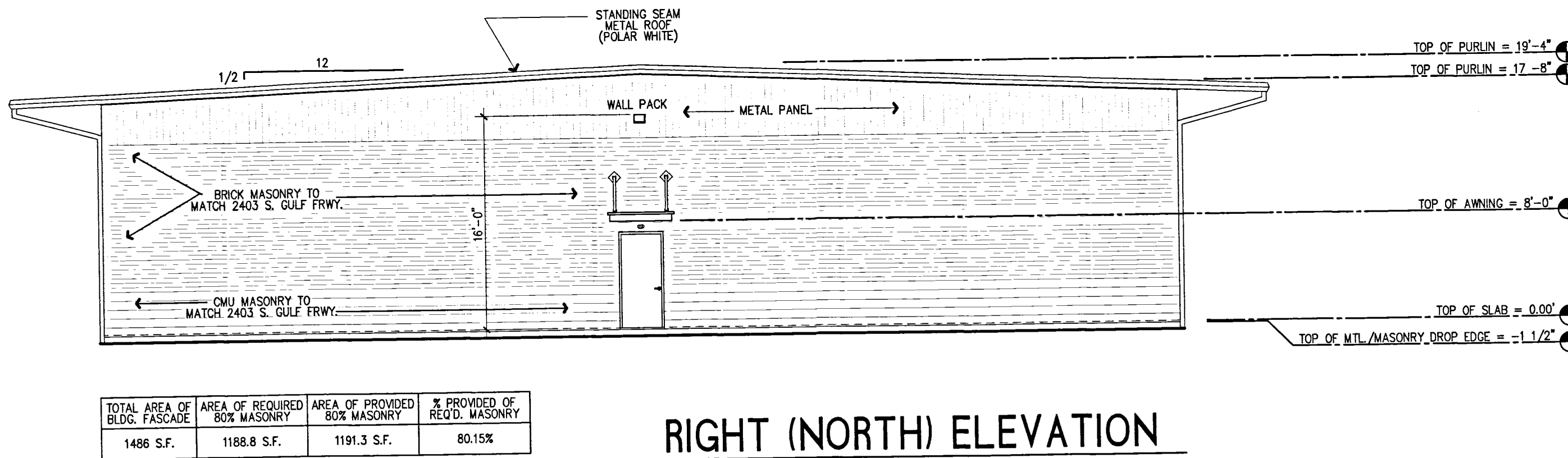
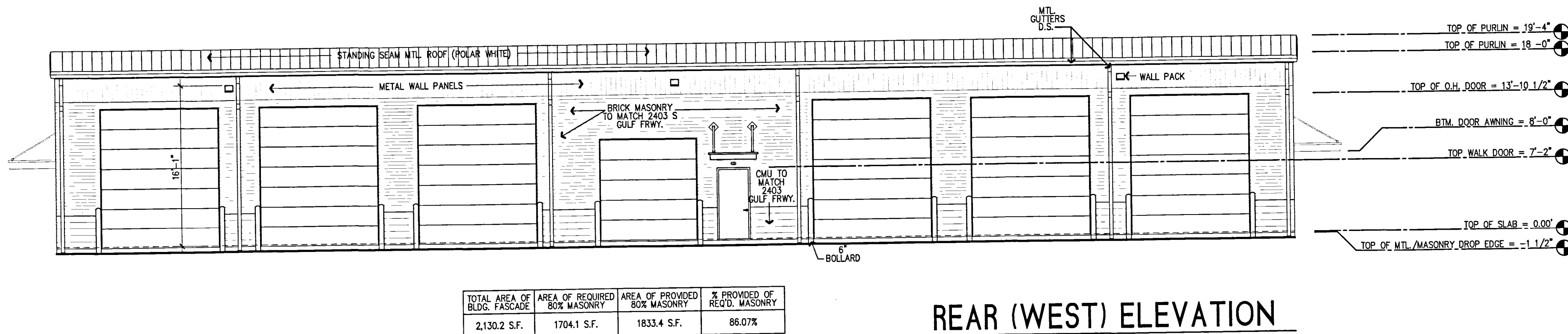
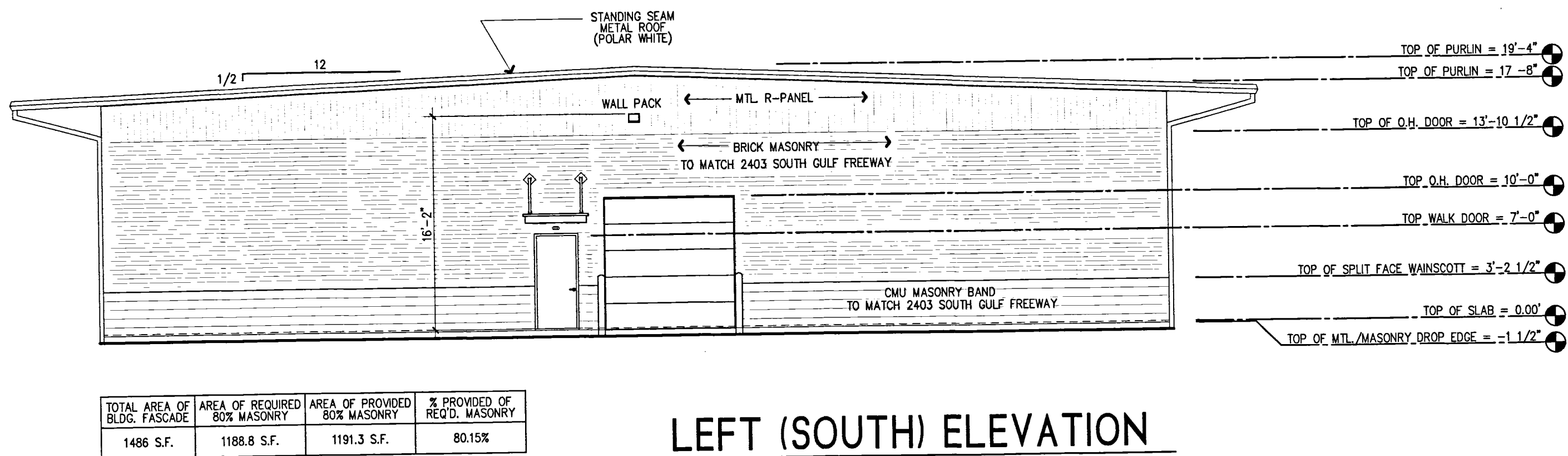


SD 35%	0
CD 65%	0
CD 95%	07.17.18
PERMIT	07.19.18
REVISION 1	0
REVISION 2	0
REVISION 3	0
REVISION 4	0

Written dimensions on these drawings shall have precedence over any dimensions shown on the drawings. Sub-Contractors shall verify and be responsible for all dimensions and conditions on the job and this office must be notified of any variation from the dimensions and conditions shown on these drawings.

Copyright © 2018 Wycoff Development and Construction, LLC. Drawings & Specifications are instruments of service and shall remain the property of Wycoff Development and Construction, LLC. They are not to be used on other projects or extensions of this project except by agreement in writing and with appropriate compensation.



\*ALL EXTERIOR GROUND, BUILDING, AND ROOFTOP MECHANICAL EQUIPMENT SHALL BE SCREENED FROM PUBLIC VIEW ON ALL SIDES. EQUIPMENT TO BE SCREENED INCLUDES, BUT IS NOT LIMITED TO: HEATING, AIR CONDITIONING, AND REFRIGERATION EQUIPMENT; PLUMBING LINES; DUCTWORK; TRANSFORMERS; AND METER BANKS. SCREENING MATERIALS MAY BE SOLID CONCRETE, WOOD, LANDSCAPING, OR OTHER OPAQUE MATERIAL THAT IS COMPATIBLE WITH THE BUILDING ARCHITECTURE AND EFFECTIVELY SCREENS MECHANICAL EQUIPMENT SO THAT IT IS NOT VISIBLE FROM A PUBLIC STREET OR ADJOINING LOT. SCREENING MATERIAL MAY HAVE EVENLY DISTRIBUTED OPENINGS OR PERFORATIONS NOT EXCEEDING 50 PERCENT OF THE SURFACE AREA. ROOFTOP EQUIPMENT MAY BE SCREENED USING ENCLOSURE, PARTIAL SCREENS, OR PARAPET WALLS\*

BRICK VENEER SHALL BE WEATHER RATED KILN FIRED CLAY OR SLATE MATERIAL, OR CONCRETE BRICK IF IT IS TO BE THE SAME AS ASTM C216 OR C652 AND SEVERE WEATHER RATED; SUCH SHALL BE NO LESS THAN TWO AND ONE QUARTER INCHES IN THICKNESS WHEN APPLIED AS A VENEER. IF STONE IS TO BE USED, IT SHALL BE UNPAINTED UPON AND SHALL BE NO LESS THAN THREE AND FIVE-EIGHTS INCHES IN THICKNESS WHEN APPLIED AS VENEER.