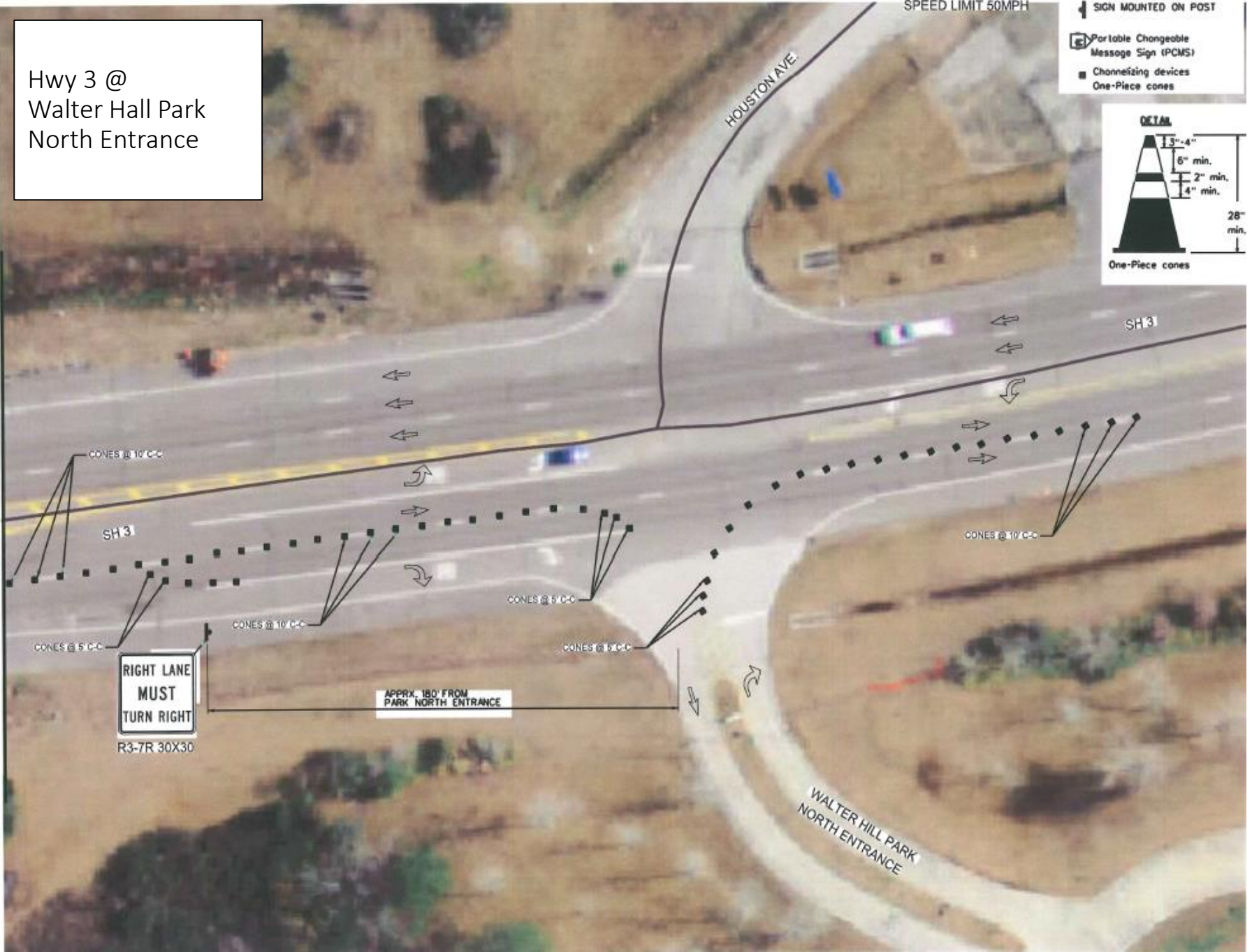
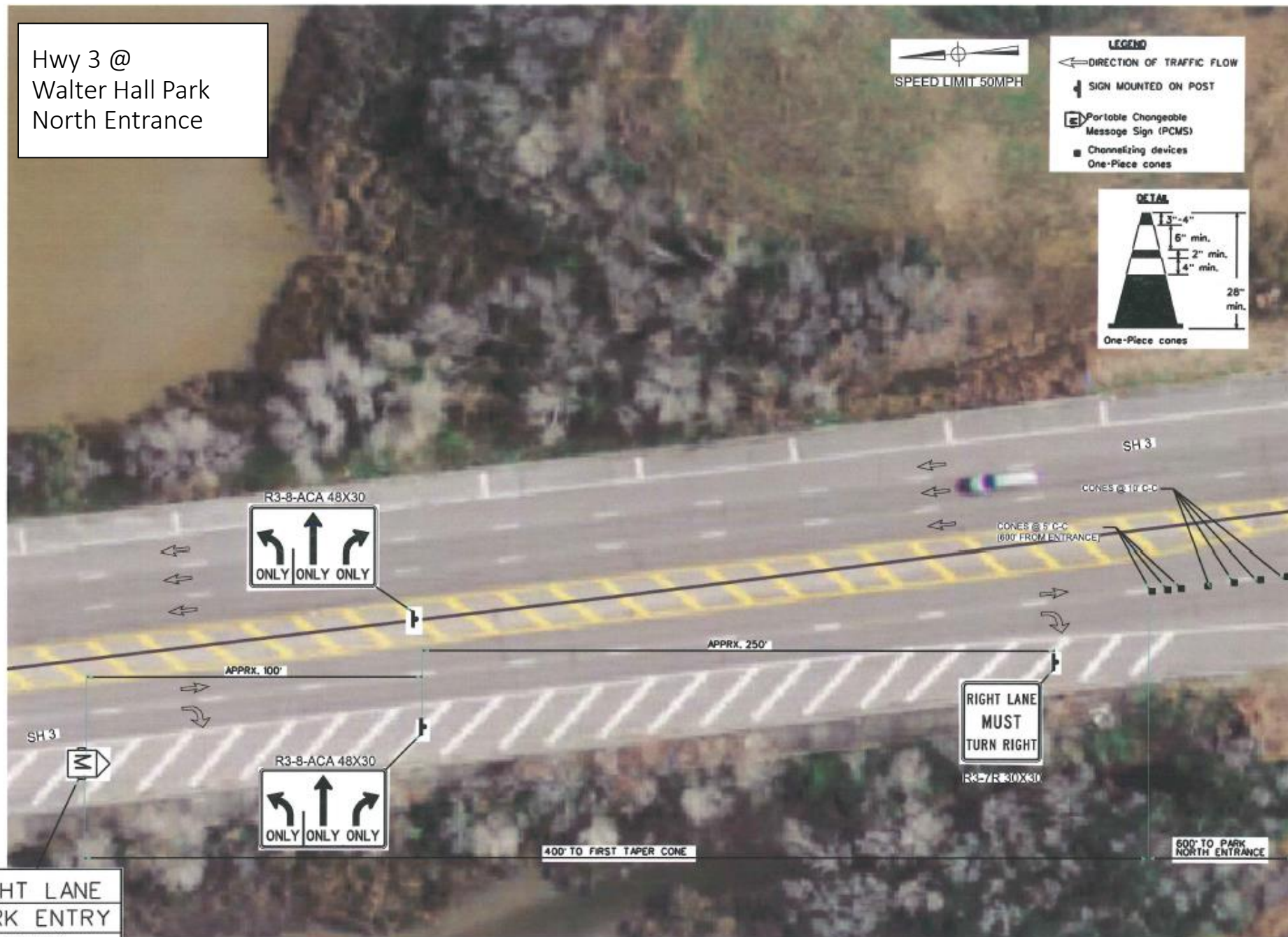
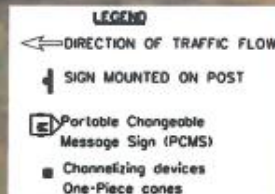


Hwy 3 @
Walter Hall Park
North Entrance

MATCH LINE "A"

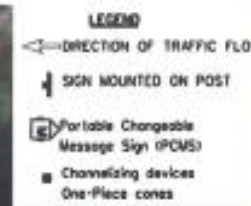
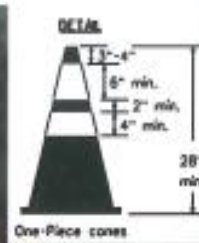


Hwy 3 @
Walter Hall Park
North Entrance



RIGHT LANE
PARK ENTRY
ONLY

Hwy 3 @
Walter Hall Park
South Entrance



CW20-5L 48X48

LEFT
LANE
CLOSED

CW20-5R 48X48

RIGHT
LANE
CLOSED

APPROX. 400 FEET FROM
PARK SOUTH ENTRANCE

APPROX. 400 FEET FROM
PARK SOUTH ENTRANCE

APPROX. 400 FEET FROM
PARK SOUTH ENTRANCE

WALTER HALL PARK
SOUTH ENTRANCE