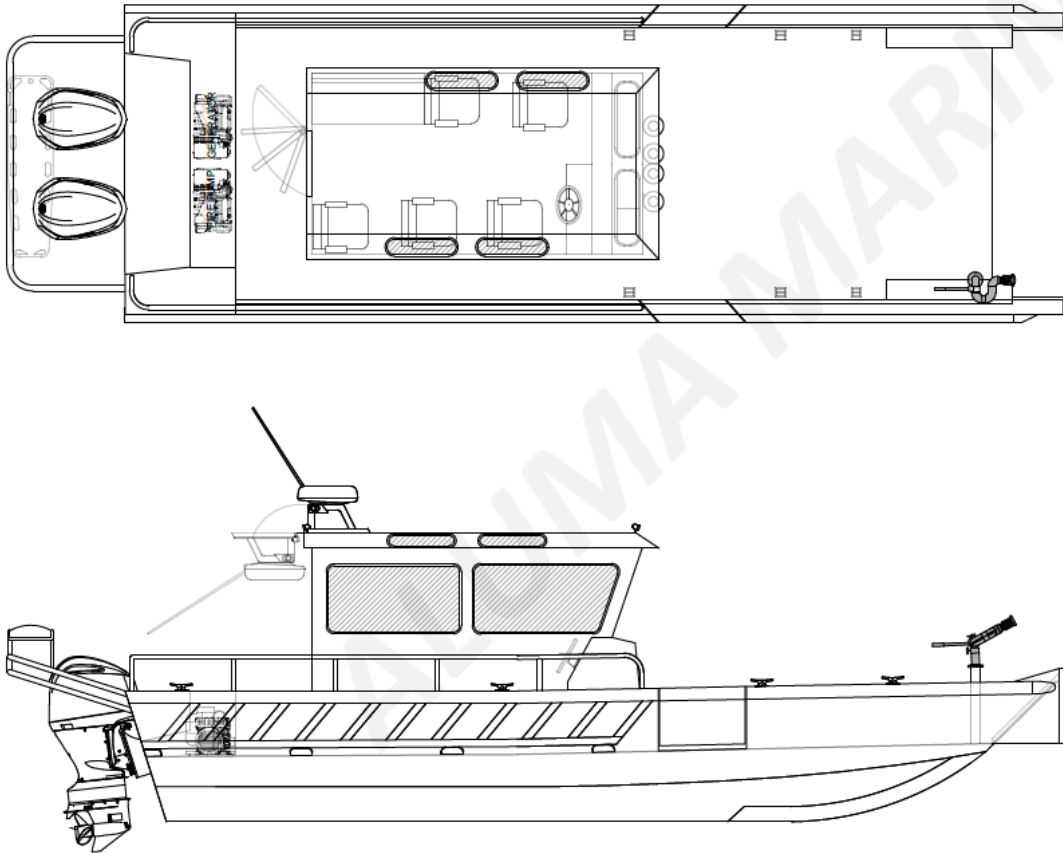


ALUMA MARINE, LLC

Presents

A Proposal For

RFP 20-Fire-001 R All Hazards Response Boat



COPY

Especially Prepared For

The City of League City

League City, TX



Request for Proposal Cover Sheet

DUE DATE: Tuesday, November 19, 2019 by 2:00 p.m.

OFFEROR FORM – Base

In accordance with the attached instructions, terms, conditions, and Scope of Specifications we submit the following proposal to City of League City.

TOTAL PROPOSED COST

\$ 335,805.18

Total Proposed Costs in Words

All prices are to be F.O.B. Destination. Any freight/delivery charges are to be included.

ALUMA MARINE, LLC

RFP #20-Fire-001 (R)

Section A

City of League City

ALUMA MARINE, LLC

HEADQUARTERS & MANUFACTURING

1901 Destrehan Avenue
Harvey, LA 70058
T: (504) 347-7898
F: (504) 347-2228
www.alumamarine.com

SALES & MARKETING OFFICE

P.O. BOX 565
Yaphank, NY 11980
T: (631) 924-2800
F: (631) 924-5700
www.alumamarine.com

COMPANY HISTORY

After 30 years of working in some of New Orleans' biggest shipyards, Darren decided to form his own company, fulfilling a lifetime dream. His goal was to one day operate a shipyard similar in size to the ones that he had worked and developed his skills in for all of those years.

In 2004 he made that leap from the large shipyards to being a small business owner. He began work out of his garage, using only the tools and equipment that he had accumulated over the years. As with most new small businesses, his only option was to reinvest the profits back into the business as it grew.

Darren is known in this market for his unique designs and superior craftsmanship. Combined with a business philosophy of honesty and integrity, business began to grow as soon as the doors were opened.

In February of 2007, the business finally outgrew the existing facility and moved to its current site. The new shipyard provided ample space for the current business, along with sufficient room for growth. To this facility, he added new equipment, including rough terrain cranes, a front loading fork lift, a 60 ton crane, and a fully furnished fabrication shop.

Prepared to handle the needs of new clientele, Aluma Marine has built a large portfolio of work in its 10+ years of business. Servicing clients from Hawaii to the Virgin Islands, including multiple state and national governments, Aluma Marine's quality and attention to detail has always left their clients impressed and satisfied.

ALUMA MARINE, LLC

HEADQUARTERS & MANUFACTURING

1901 Destrehan Avenue
Harvey, LA 70058
T: (504) 347-7898
F: (504) 347-2228
www.alumamarine.com

SALES & MARKETING OFFICE

P.O. BOX 565
Yaphank, NY 11980
T: (631) 924-2800
F: (631) 924-5700
www.alumamarine.com

COMPANY OVERVIEW

EXPERIENCE

- The owner, Darren Bolotte, has of over 30 years in the boat building industry. Visit our website at www.alumamarine.com.
- Established in February of 2004, Aluma Marine has completed many jobs including
 - 59 new vessels from 20' to 60' in length.
 - 7 new vessels 65' in length.
 - 20 refit / conversions from 25' to 120' in length.
 - 300 Vessels repaired from 25' to 140' in length.
- Aluma Marine has an experienced workforce of 25 employees who not only specialize in certain fields, but are skilled and able to fill multiple tasks. The employees range from:
 - 2 Supervisors
 - 11 Fitter / Welders
 - 4 Riggers
 - 3 Carpenters
 - 2 Painters
 - 3 Laborers
- In addition to new construction, Aluma Marine also specializes in repairs, refits, and conversions.

WORK SITE & EQUIPMENT

- Aluma Marine is located on the Harvey canal, just 10 miles south of the city of New Orleans. This area is home to many companies, both large and small, and has a direct outlet into the Mississippi river.

ALUMA MARINE, LLC

HEADQUARTERS & MANUFACTURING

1901 Destrehan Avenue

Harvey, LA 70058

T: (504) 347-7898

F: (504) 347-2228

www.alumamarine.com

SALES & MARKETING OFFICE

P.O. BOX 565

Yaphank, NY 11980

T: (631) 924-2800

F: (631) 924-5700

www.alumamarine.com

WORK SITE & EQUIPMENT (continued)

- Aluma Marine has an accommodating work area including:
 - 50' x 125' main covered building.
 - ' x ' rigging facility
 - 50' x 50' storage building.
 - 50' x 50' fabrication shop.
 - 3 storage containers for supplies.
 - 50' x 20' dock to accommodate multiple vessels.
 - Facility is located on 2 acres, which are fenced in with security cameras.
- Aluma Marine has, on site, all the necessary heavy equipment for the work performed, including:
 - 65 ton crane
 - 15 ton rough terrain crane
 - Front loading fork lift
 - 375 air compressor
 - 185 air compressor
 - 50 ton brake press
 - 150 ton brake press
 - 18" lathe
 - Mill worker
 - Shear

ALUMA MARINE, LLC

HEADQUARTERS & MANUFACTURING

1901 Destrehan Avenue
Harvey, LA 70058
T: (508) 347-7898
F: (508) 382-2104
www.alumamarine.com

SALES & MARKETING OFFICE

P.O. BOX 565
Yaphank, NY 11980
T: (631) 924-2800
F: (631) 924-5700
www.alumamarine.com

Aluma Marine Company Information

General Information

Name: Aluma Marine LLC

DUNS: 782886571

CAGE: 5M0R6

TIN: 41-219-1229

Points of Contact

Management & Operations: Darren Bolotte – 504-347-7898

Sales & Marketing: Malcolm Wisch – 631-924-2800

Billing & Office Operations: Adam Mott – 504-347-7898

REFERENCES

NAME OF CLIENT: New York City Department of Environmental Protection

CONTACT PERSON: Mike Wagner

ADDRESS: Wards Island Marine Operations

CITY/STATE/ZIP: Wads Island, NY 10007

TELEPHONE NUMBER/E-MAIL ADDRESS: (917) 681-3134

DESCRIPTION (SCOPE OF WORK): 30' Survey Vessel

ALUMA MARINE, LLC

HEADQUARTERS & MANUFACTURING
1901 Destrehan Avenue
Harvey, LA 70058
T: (508) 347-7898
F: (508) 382-2104
www.alumamarine.com

SALES & MARKETING OFFICE
P.O. BOX 565
Yaphank, NY 11980
T: (631) 924-2800
F: (631) 924-5700
www.alumamarine.com

30' NYC DEP SURVEY VESSELS

The (2) 30' Survey Vessels were designed and built for the New York City Department of Environment Protection. They were successively delivered in May, 2019 and have been in service since delivery. It is a rigid aluminum deep Vhull, full cabin with a heavy duty reinforced collar system. The vessel is designed with a closed cabin to comfortably accommodate a crew of six and eight passengers. There are two aft cabin lockers for storage. There is a water tight anchor locker in the bow

Length	30'
Beam	9'-11"
Fuel:	160 US gal. (2 tanks @ 80 gal. ea.)
Weight :	10,000 lbs.

Hull Construction Materials:

Bottom plating	¼" plate, 5086
Side plating	3/16" plate, 5086
Transom plating	¼" plate, 5086
Side plating	3/16" plate, 5086
Decks and floor	3/16" plate, 5086
Lifting strakes	2.594 x 3.625 spray rail, 6061

Scantlings:

Keel	½" x 5" flat bar, 6061 and ½' plate, 5086
Longitudes	3" x 1-1/2" x 3/8" bulb tee, 11" centers
Transverse frames	3/16" plate, 5086, 30" centers

Cabin construction:

Shell	3/16" plate, 5086
Framing	1/8" x 2" x 3" tubing, 1/8" x 1" x 2" tubing

ELECTRICAL 110 VAC**Northern Lights M773LW3 9kw generator**

Shore power

Dometic Penguin II 410a low profile roof mounted climate control

Electronics:

Furuno NAVNET 3D 12.1 Color Multi function LCD Display

Furuno DRS4D NavNet 3D 24" Radome

Furuno 522-LTD/20 Bronze Thru-Hull Transducer

Furuno GP330B NMEA 2000 GPS

Propulsion:

One (1) Std. and one (1) counter rotating Honda iST 250 HP marine engines

30' x 9'-11" Harbor Patrol Performance Chart

Propulsion: (2) two 250 HP Honda iST 4 stroke outboard engines

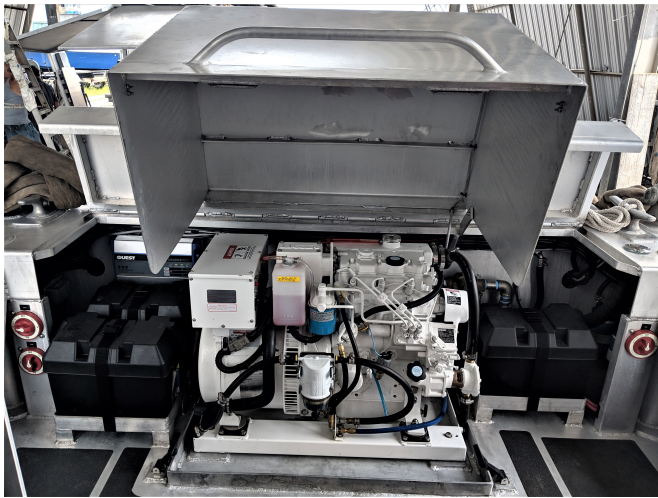
Personnel on board: (4) four

Fuel on Board: 80 Gallons

Sea State: 1

RPM	SPEED - MPH	FUEL - GPH	Range miles
3300	18	10.7	252.3
3600	25	13.3	282
4000	31	16.3	285.3
4250	34	19.2	265.6
4450	36	19.8	272.7
4800	40	24.8	241.9
5000	42	26.6	236.8
6000	52	29.2	267.1





REFERENCES

NAME OF CLIENT: U.S. Army Corps of Engineers Mobile District

CONTACT PERSON: Reid Poe

ADDRESS: 7861 13th Street

CITY/STATE/ZIP: Irvington, AL 36544

TELEPHONE NUMBER/E-MAIL ADDRESS: (251) 957-6019

DESCRIPTION (SCOPE OF WORK): 70' Foil Assisted Catamaran

NAME OF CLIENT: U.S. Army Corps of Engineers Norfolk District

CONTACT PERSON: Scott Titus

ADDRESS: 803 Front Street

CITY/STATE/ZIP: Norfolk, VA 23510

TELEPHONE NUMBER/E-MAIL ADDRESS: (757) 201-7665

DESCRIPTION (SCOPE OF WORK): 62' Foil Assisted Catamaran

NAME OF CLIENT: U.S. Army Corps of Engineers Baltimore District

CONTACT PERSON: Ryan Schuman

ADDRESS: 2611 Leahy Street

CITY/STATE/ZIP: Baltimore, MD 21230

TELEPHONE NUMBER/E-MAIL ADDRESS: (410) 9962-9564

DESCRIPTION (SCOPE OF WORK): 62' Foil Assisted Catamaran

ALUMA MARINE, LLC

HEADQUARTERS & MANUFACTURING
1901 Destrehan Avenue
Harvey, LA 70058
T: (508) 347-7898
F: (508) 382-2104
www.alumamarine.com

SALES & MARKETING OFFICE
P.O. BOX 565
Yaphank, NY 11980
T: (631) 924-2800
F: (631) 924-5700
www.alumamarine.com

CATAMARAN SURVEY VESSELS

Aluma Marine, working with Technology Associates, Inc. has constructed and delivered two High Speed Catamaran Survey Vessels for the Army Corps of Engineers.

“Catlett” - 62’ x 24’ Foil Assisted Catamaran was delivered in July, 2017 and serves in Baltimore, MD.

“Ewell” – 62’ x 24’ Foil Assisted Catamaran, was delivered in January, 2018 and serves in Norfolk, VA.

A third vessel, “Damrell”, a 70’ x 24’ Foil Assisted Catamaran is still under construction and will soon be delivered to Mobile AL.

These Foil assisted catamaran hydrographic survey boats are made of all marine aluminum alloy construction. They are propelled by two diesel engines and equipped with two diesel generators that provide electrical power. They have piping, electrical, navigation and electronics, heating, ventilation & air-conditioning systems, galley, living facilities and lifesaving equipment. AC and DC electrical systems have a single point ground, monitored system.

Electrical power is supplied by two 15 kW KOHLER (15EKOZD) diesel generators located in engine room. The generators are capable of auto parallel operation.

The vessels have a Moonpool constructed between the hulls. The aluminum transducer survey strut is connected to a stainless steel track. All dissimilar metals are isolated.

The Moon pool is provided with a water splash proof cover plate. Cover plate to be removed during strut operations. When the strut is not in operation moon pool opening is covered with the moon pool cover plate. Equipment housed inside the pod can be inspected, maintained and replaced by standing over the moon pool cover plate. Moon pool cover plate is provided with locking bracket.

Hydrographic survey operations are facilitated by the survey strut pod assembly and the A-frame supported davit deployed side-scan sonar tow fish. The hydrographic survey transducers are housed inside a survey pod that is attached to a retractable survey strut, which is installed on the aft bulkhead of the deckhouse. Survey strut is designed to move vertically on SS track and it is controlled by an electric winch. The winch can be accessed from top of the deck house. Strut along with the pod can be lowered through a 4.23' x 2.89' moon pool provide in the deck, which can be deployed during survey operations.

The track is constructed with SS material and it is connected to the house aft bulkhead via brackets using nut and bolts, and its top portion is supported by stanchions. The track also has a 6 ft removable section which can be used to replace UHMWPE sliding blocks when needed. The track contains locking positions at the bottom and top, to lock the survey strut in three different locations. Of which two positions can be used during survey operations and one is the locking position during non-operation mode. There is no load on the winch when the strut is in locked position. A 'V'-block is placed at the bottom of the track which acts as a dead stopper and restrict further movement of the strut. In this position, the pod bottom will be 1 foot below the base line. See figures below for various locking positions of the strut. At each locking position, the carriage is locked using locking brackets. Further V-block has provision to raise its position in the moon pool which then configures the strut to even with keel position if such desired for most surveys. Nevertheless, V-block do not require shifting always for even keel position as locking brackets can also be used to lock the strut in place in that position.



USACE CATLETT, Baltimore District



USACE EWELL, Norfolk District

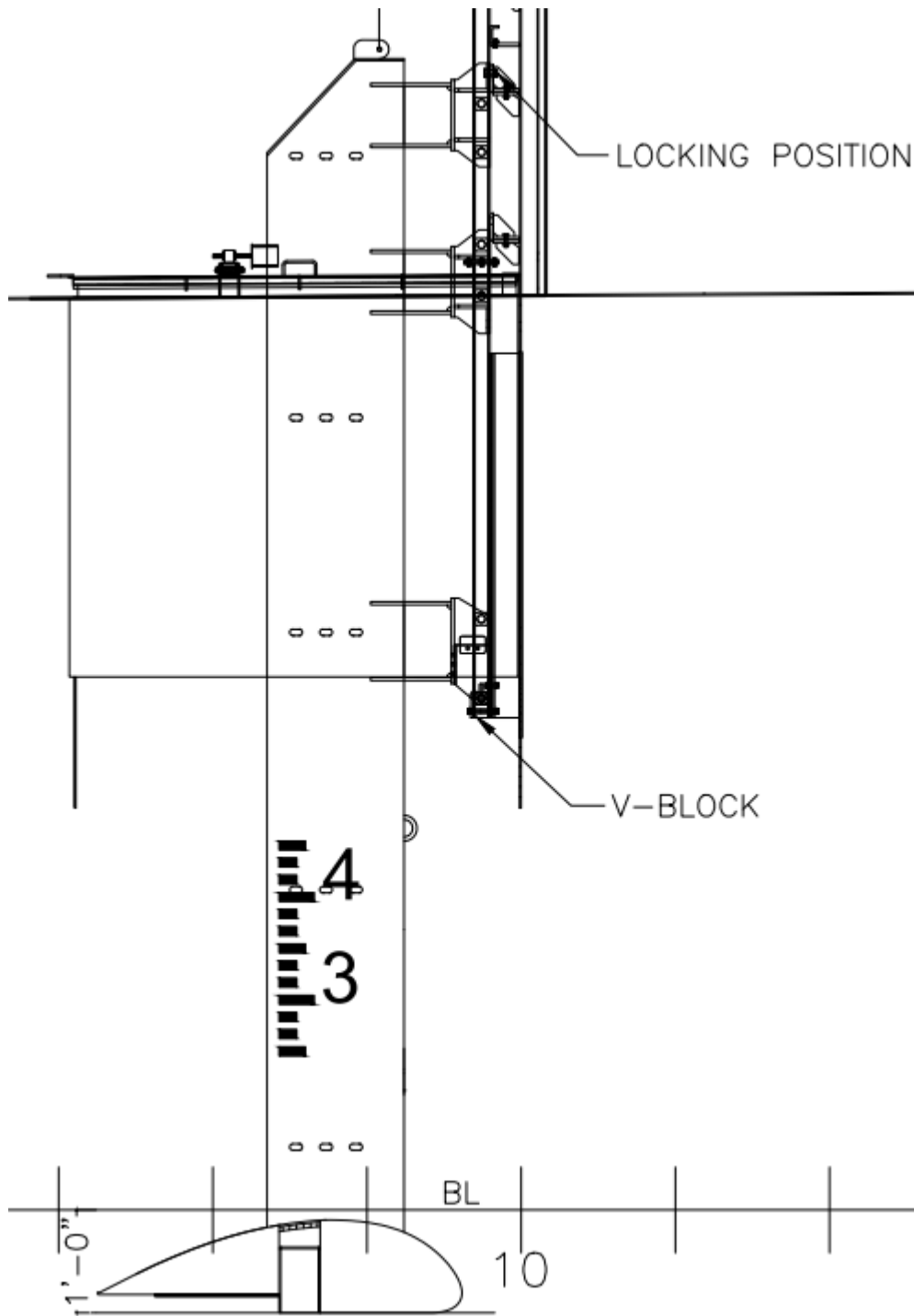


USACE DAMRELL, Mobile District

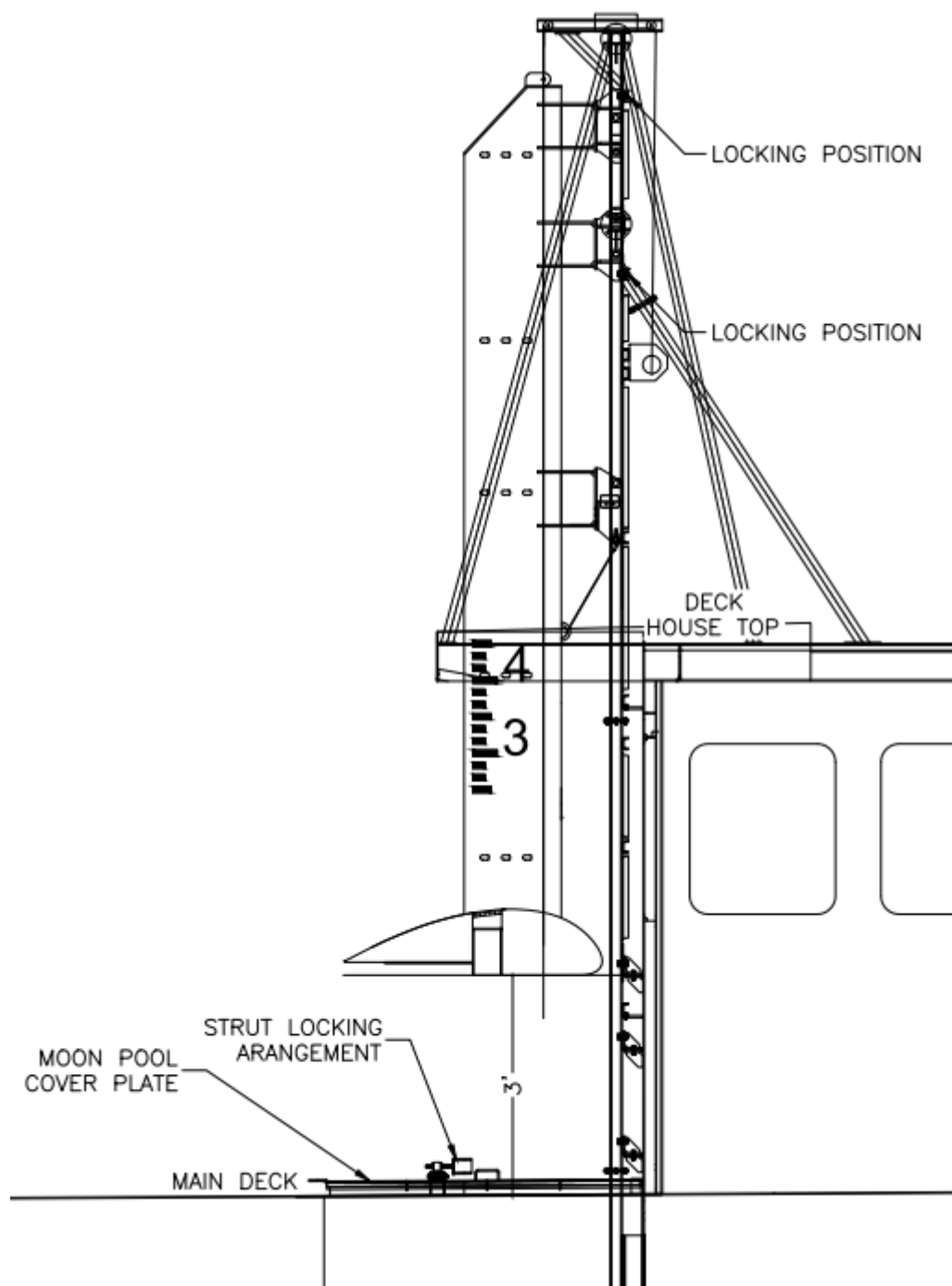


POD in the up position with the Moon pool hatch in the stowed position.

This illustration has the POD at 1' below BL showing locking positions.



POD at 3' above main deck showing locking positions





Upper section of the stainless-steel track.



POD in the up position with the Moon pool hatch in place and secured.



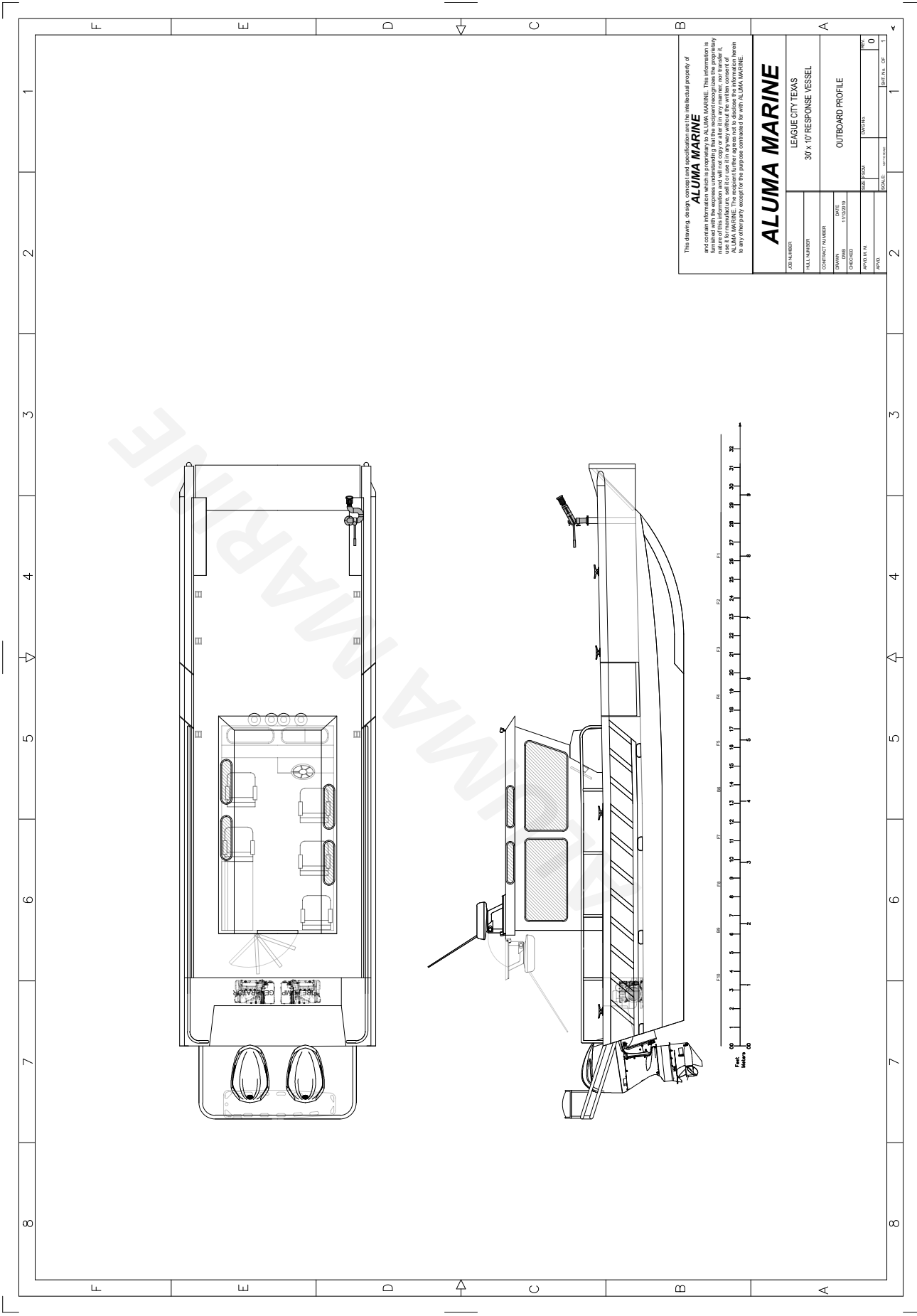
Transducer POD deployed.

ALUMA MARINE, LLC

RFP #20-Fire-001 (R)

Section B

City of League City



This drawing, design, concept and specification are the intellectual property of
ALUMA MARINE
and contain information which is proprietary to ALUMA MARINE. This information is
not to be used for any other purpose without the written consent of ALUMA MARINE.
ALUMA MARINE shall not be held responsible for any errors or omissions in this drawing
and shall not be held responsible for any damage or injury resulting from the use of this
drawing. ALUMA MARINE shall not be held responsible for any damage or injury resulting
from the use of this drawing. ALUMA MARINE shall not be held responsible for any
damage or injury resulting from the use of this drawing. ALUMA MARINE shall not
be held responsible for any damage or injury resulting from the use of this drawing.

ALUMA MARINE

LEAGUE CITY TEXAS
30' x 10' RESPONSE VESSEL

OUTBOARD PROFILE

JOB NUMBER	
ALL NUMBERS	
CONTAINER NUMBER	
DRAWN BY	ALMA
CHECKED BY	ALMA
APPROVED BY	
DATE	11/11/2016
SCALE	AS SHOWN
SHEET NO.	0
OF	1

ALUMA MARINE, LLC

WARRANTY STATEMENT

For the protection of its customers, Aluma Marine, LLC (Aluma) provides the original purchaser:

- A. A limited 1-year warranty on the hull structure; and
- B. A limited 1-year warranty on accessories installed by Aluma (see exclusions listed below).

1. This warranty is granted by Aluma Marine, LLC., 1901 Destrehan Avenue, Harvey, LA 70058.
2. Warranty coverage includes all parts manufactured or designed by Aluma including hulls, cabins, railings and other aluminum components. Also covered are products not manufactured by Aluma, except as noted in paragraph 4, which are installed on the boat and invoiced at time of initial delivery.
3. The following parts are not covered by this warranty for any defect, except as hereinafter noted:
 - (a) Engines, whether outboard, inboard/outboard or inboard, the engine manufacturer's warranty applies even when Aluma sells or installs the engine;
 - (b) Batteries and battery chargers, isolators, or isolation transformers;
 - (c) Electronics, including but not limited to radar, radios, GPS, depth finders, knot meters, sirens, loud hailers and other electronic equipment;
 - (d) Generators, fire pump engines and other non-propulsion engines. However, installation of the above equipment is the responsibility of Aluma and, if installation is faulty, Aluma assumes warranty responsibility for repairs;
 - (e) Damage to the drive train, propulsion engine, shaft, bearings, structure of the vessel or any other component caused by damaged or unbalanced propellers or misalignment of the propulsion/driveline components is not covered under this warranty; and
 - (f) Corrosion or damage to the hull, interior or exterior plate, running gear or other components due to the application of copper based, or otherwise corrosive to aluminum, anti-foul paints and other coatings.
4. None of the foregoing hull and accessory warranties applies to Aluma products which have been structurally altered without factory approval, subjected to abuse, negligence, accident or combat damage, or failure to operate and maintain the product in accordance with applicable marine practices; exceeding recommended horsepower, or loading capacities as indicated; or trailering damage due to inadequate bottom support, improper adjustment or loose tie-down straps. Further, that corrosion or electrolysis caused by the owner's installation of bronze, brass, steel or electrical components to the hull, cabin or other aluminum part is not covered by this warranty.
5. If, within the warranty period, a defect in materials or workmanship is recognized (other than improperly installed non-factory components), Aluma shall, at its option, repair or replace the defective hull or part. Repairs must be authorized in writing prior to commencement of work. Where hull integrity is questioned, the boat may be required to be returned to the factory for inspection, repair and/or replacement.
6. Hauling out, launching or freight to and from the factory or service location are not covered under this warranty obligation.
Further, Aluma assumes no obligation for lost revenues, project interruptions or schedule modifications during the period the vessel may be out of service.
7. Aluma reserves the right to make changes in the design of material of its product, without incurring any obligation to incorporate such changes in any product previously manufactured, advertised or sold. ALUMA MARINE, LLC MAKES NO OTHER EXPRESS WARRANTIES, AND INTENDS NO IMPLIED WARRANTIES, INCLUDING ANY IMPLIED WARRANTY OF MERCHANTABILITY OR FITNESS FOR A PARTICULAR PURPOSE. IF ANY IMPLIED WARRANTIES ARE FOUND TO EXIST, SUCH IMPLIED WARRANTIES WILL BE LIMITED TO THE 1-YEAR TIME PERIOD SET FORTH HEREIN. SOME STATES DO NOT ALLOW LIMITATIONS ON HOW LONG AN IMPLIED WARRANTY LASTS, SO THE ABOVE LIMITATION MAY NOT APPLY TO YOU. ALUMA MARINE, LLC WILL NOT BE LIABLE FOR INCIDENTAL OR CONSEQUENTIAL DAMAGES OF ANY KIND RESULTING FROM A BREACH OF ANY WARRANTY EXPRESS OR IMPLIED. SOME STATES DO NOT ALLOW THE EXCLUSION OR LIMITATION OF INCIDENTAL OR CONSEQUENTIAL DAMAGES, AND, THEREFORE, THE ABOVE LIMITATION OR EXCLUSION MAY NOT APPLY TO YOU.
8. To initiate a warranty claim, owners must promptly (no later than thirty (30) days after discovery of the defect) notify Aluma by referring to the nature of the defect, providing hull serial number, date of purchase and operational status. In no event, or under any circumstances, should warranty repairs commence without the express written permission from Aluma Marine, LLC to proceed with any repairs.
9. This warranty gives you specific legal rights that may vary from state to state.

ALUMA MARINE, LLC

RFP #20-Fire-001 (R)

Section C

City of League City

ALUMA MARINE, LLC

HEADQUARTERS & MANUFACTURING

1901 Destrehan Avenue
Harvey, LA 70058
T: (504) 347-7898
F: (504) 347-2228
www.alumamarine.com

SALES & MARKETING OFFICE

P.O. BOX 565
Yaphank, NY 11980
T: (631) 924-2800
F: (631) 924-5700
www.alumamarine.com

30' League City response vessel			
Item	Qty	Description	Cost
1	1	Metal work & hull arrangements materials	\$44,772.00
2	1	Metal work & hull arrangements labor	\$72,540.00
3	1	Rigging materials	\$39,567.60
4	1	Rigging labor	\$4,320.00
5	1	Painting materials	\$5,232.00
6	1	Painting labor	\$9,720.00
7	1	Electrical materials	\$28,183.20
8	1	Electrical labor	\$11,220.00
9	1	Carpentry materials	\$3,936.00
10	1	Carpentry labor	\$7,020.00
11	1	Engine & trailer	\$80,604.00
12	1	Engine & trailer labor	\$2,940.00
13	1	Delivery	\$6,000.00
14	1	Insurance & fees	\$19,750.38
			\$335,805.18

ALUMA MARINE, LLC

HEADQUARTERS & MANUFACTURING

1901 Destrehan Avenue
Harvey, LA 70058

T: (504) 347-7898

F: (504) 347-2228

www.alumamarine.com

SALES & MARKETING OFFICE

P.O. Box 565

Yaphank, NY 11980

T: (631) 924-2800

F: (631) 924-5700

www.alumamarine.com

SALES QUOTATION

DATE: 11/19/2019

QUOTATION #: 88027-1

RFP #: **20-Fire-001 R**

CUSTOMER: City of League City
Purchasing Department
300 West Walker
League City, TX 77573

**ALL HAZARDS
RESPONSE
BOAT**

TELEPHONE:

FAX:

E-MAIL: purchasing@leaguecitytx.gov

			UNIT
P/N	QTY	DESCRIPTION	COST EXT. COST

BASE BOAT

- 1 Aluma Marine 3010 All-Hazards Response Boat.
Includes Monohull Modified V Design; All-Welded
Heavy-Duty Marine Grade Aluminum Construction;
Walkaround Aft Pilothouse; Manually Operated Bow
Door (for Personnel Only) to Accommodate Stokes;
Starboard Side Helm; Overhead Radio Rack
WINDOW PACKAGE INCLUDES:
All Windows to be Tempered Safety Glass;
(2) Forward Leaning Windshields;
(2) Side Windows, Fixed/Sliding, (1) Each, P/S;
(1) Lockable Hinged Folding Door w/Window on Top
Half, Located on Aft Cabin Bulkhead;
(4) Overhead Spotter Windows, (2) Each Located
Above Operator & Companion Seats.

QUOTE #: 88027-1
CUSTOMER: City of League City

P/N	QTY	DESCRIPTION	UNIT COST	EXT. COST
-----	-----	-------------	--------------	-----------

**BASE BOAT
(CONT'D.)**

PRINCIPAL CHARACTERISTICS:

Length: 30'
Beam: 10'
Overall Height on Trailer: 13'6"
Draft: 24"
Person/Cargo Capacity: 4,000 Lbs.
Boat Weight: 15,200 Lbs. Approx.
Trailer Weight: 2,900 Lbs. Approx.

PROPULSION PACKAGE

- 2 300 HP Yamaha 4-Stroke Outboard Engines w/30" Shafts, Counter-Rotating. Includes Fuel Management System, Dual Key Management System, Dual Key Switch Panel, Power Trim and Tilt, Harnesses.

ENGINE INSTALLATION PACKAGE

- 1 Engine Installation Package, Twin Outboard Engines. Includes Filters, Valves, Gauges, Etc.
- 1 Steering Wheel.

QUOTE #: 88027-1
CUSTOMER: City of League City

P/N	QTY	DESCRIPTION	UNIT	
			COST	EXT. COST

PILOTHOUSE

NOTE: WALKAROUND PILOTHOUSE
APPROXIMATE DIMENSIONS ARE 9'L X 8'1"W
& INTERIOR CLEARANCE HEIGHT OF 76".
PILOTHOUSE IS TO BE FULLY ENCLOSED.

- 1 **GRAB RAIL PACKAGE INCLUDES:**
 - (2) Overhead Grab Rails in Pilothouse;
 - (1) Grab Rail Adjacent to Fire Pump Control Station;
 - (2) Grab Rails, Exterior Pilothouse Bulkhead;
 - (2) Grab Rails, Exterior Pilothouse Aft Bulkhead.
- 2 Suspension Seats Mounted on Storage Boxes, (1)
Each Operator & Companion.
- 2 Suspension Seats Mounted on Storage Boxes
Mounted on Starboard Side, Aft of Operator.
- 1 Seat Bench/Storage Box, Port Side, Aft of
Companion Seat (Sized to Accommodate Stokes).

QUOTE #: 88027-1
 CUSTOMER: City of League City

P/N	QTY	DESCRIPTION	UNIT	
			COST	EXT. COST

DECK & HULL EQUIPMENT

PLATING SCHEDULE:

Bottom Plating: .250" 5086
 Side Plating: .190" 5086
 Deck Plating: .124" 5086
 Deck Structure/Components: 5086 .190", .250" & .375"

- 2 Dive Doors, 34" Clear Opening, (1) Each, P/S.
- 1 Swimmer's Grab Rails Above Waterline, P/S.
- 1 Hull Anodes, As Required.
- 1 Padeye, Double, Aluminum, 3/4".
- 2 Side Safety Rails, 1.5" Aluminum Pipe, 6" Above Gunwale, 72" Forward of Dive Doors, (1) Each, P/S.
- 8 Cleats, Welded Aluminum, 10", (4) Each, P/S.
- 1 Rubber Bumper, 3" D-Shaped, Surrounding Sheerline P/S.
- 10 Fendering, Diagonal, D-Shaped, for Hull Protection on Topsides, (5) Each, P/S.
- 1 T-Handle Drain Plug.
- 8 Cargo Tiedowns, (4) Each, P/S.
- 1 Fuel Tank, Baffled, 160-Gallon, Internal.
- 1 Outboard Protection Bar w/Tow Line Guides, 2-Tier.
- 1 Tow Post, Single.
- 1 Push Knees, Pair. Includes Vertical Rubber D-Shaped Bumper.
- 2 Scuba Tank Racks, 2-Bottle Each.
- 1 Mast, Folding w/Shelves.
- 4 Mounting Plates for Antennas on Pilothouse Roof.

QUOTE #: 88027-1
CUSTOMER: City of League City

P/N	QTY	DESCRIPTION	UNIT	
			COST	EXT. COST

PAINT/COATINGS/GRAPHICS

- 1 Non-Skid Coating on Deck Area & Interior/Exterior of Pilothouse.
- 1 Reflective Stripe, Red, on Topsides, P/S, Below Sheerline.
- 1 Graphics "League City Public Safety" & League City Fire Marshal's Patch on Pilothouse Exterior Sides. All Graphics to be Reflective Material. Customer to Supply Required Artwork.
- 1 Anti-Fouling Paint.

QUOTE #: 88027-1
 CUSTOMER: City of League City

P/N	QTY	DESCRIPTION	UNIT COST EXT. COST
<u>DC ELECTRICAL</u>			
	1	12-Volt Electrical System. Includes (2) 12VDC Distribution Panels, Blue Seas, 6-Positions Each.	
	2	Bilge Pumps, Electric, Automatic, 2000 GPH.	
	2	Fans, 12-Volt, (1) Each Above Operator & Companion Seats.	
	4	Dome Lights, LED, Pilothouse, Overhead, White/Red.	
	1	Horn, Electric.	
	1	Spotlight, LED, Remote Control.	
	2	Windshield Wipers, Heavy-Duty, Electric.	
	2	Power Outlets, 12-Volt, on Console.	
	2	USB Charging Ports on Console, Blue Seas.	
	1	Wiring Labels.	
	4	Marine Batteries w/Battery Switches; (2) Batteries for Engine Starting Bank; (1) Battery for Fire Pump Motor; & (1) Battery for House Battery; 4-Position Battery Distribution Panel w/Switch for Each Battery; Crossover Switches to Allow Jumping & (3) Automatic Charging Relays; Includes Battery Boxes.	
	1	Navigation Lights, LED, As Required.	
	1	Whelen Ion Trio Emergency Lighting w/Red/Blue/White Lenses.	
	4	Floodlights, LED, Mounted on Pilothouse Roof, (1) Each Forward & Aft & (1) Each Facing P/S.	
	1	Courtesy Lights, LED, Red to Illuminate Walkaround Deck.	
	1	Whelen Siren/Loud Hailer System.	

QUOTE #: 88027-1
CUSTOMER: City of League City

P/N	QTY	DESCRIPTION	UNIT	COST	EXT. COST
-----	-----	-------------	------	------	-----------

AC ELECTRICAL

- 1 110VAC Distribution Panel w/Circuit Breakers.
- 1 Air Conditioner/Heater, Rooftop.
- 1 Shore Power System, 30-Amp. Includes Inlet; 50' Power Cable w/Plugs on Both Ends;& Battery Isolator.
- 1 Battery Charger, 4-Bank.
- 3 Duplex Outlets, 110VAC.
- 1 Generator Set, 5 Kw, Westerbeke.
- 1 Generator Set Installation Package.

MECHANICAL

- 1 Washdown System w/Hose, Raw Water.

SAFETY & NAVIGATION

- 1 Carbon Monoxide Detector in Pilothouse.
- 1 Gasoline Fume Detector in Fire Pump Compartment.
- 1 Fire Extinguisher, 10 Lb. ABC.
- 1 Fire Extinguisher, 10 Lb. C02.
- 1 Compass.

QUOTE #: 88027-1
 CUSTOMER: City of League City

P/N	QTY	DESCRIPTION	UNIT	
			COST	EXT. COST

ELECTRONICS

- 1 Raymarine Ray53 VHF Radio w/Antenna & Mount.
- 2 Raymarine Axiom Pro 9-Inch MFD Touch Screen w/GPS, Chart Plotter, Side Scan, Maps & Transducers, Real Vision 3D All-In-One Sonar & Installation of the Above.
- 1 Raymarine Radar/Radome, Model Quantum Q24C 18"; WiFi Dome w/10m Cables.
- 1 Cost to Install Customer-Supplied Motorola APX8500 Radio & Antenna.
- 1 AM/FM Radio w/2 Speakers.

FIRE SUPPRESSION SYSTEM

- 1 **FIRE SUPPRESSION SYSTEM INCLUDES:**
 - (1) Fire Pump, 1,000 GPM @ 150 PSI at the Pump;
 - (1) Pump Control Station, FRC Pump Boss 200 Pressure/RPM Controller;
 - (1) FRC Dash Mounted Pressure (PSI) & Flow (GPM) Meter;
 - (1) Remote Control 6" Stainless Shutoff Valve Between Sea Chest & Pump w/Controls on Main Console;
 - (1) TFT Inline Foam Inductor w/7' Pickup Tube;
 - (1) TFT Monitor Located Forward on Boat Interchangeable Fog Nozzle & Smooth Bore w/Stacked Tips & Stream Straightener. Monitor to be Located Near Bow Door; Monitor is to be Manual.
 - (2) TFT 2.5" Male Gated NST Discharges, (1) 5" TFT LDH Discharge Terminated w/a 5" Storz Connection;
 - (1) Thru-Hull Suction/Sea Chest w/6" Intake. Includes Screened Inlet & Valve at Sea Chest Outlet.
 - (1) Fresh Water Flushing Port Installed Just Ahead of Sea Chest Valve;
 - (1) Fire Suppression System in Fire Pump Compartment, Sea Fire.

QUOTE #: 88027-1
CUSTOMER: City of League City

			UNIT
P/N	QTY	DESCRIPTION	COST EXT. COST

TRAILER

- 1 Custom Aluminum Triple Axle Bunk Trailer w/Electric Brakes, Spare Tire & Tongue Jack on Trailer. Also Included are Galvanized Steel Wheels w/Electric Disc Brakes, Adjustable Bow Stop & Winch Stand w/Manual 2-Speed Winch & Strap, Submersible LED Trailer Lights.

TOTAL COST OF BOAT (USD) F.O.B. LEAGUE CITY, TX 335,805.18

QUOTE #: 88027-1
CUSTOMER: City of League City

NOTES:

- 1) This quotation expires January 14, 2019.
- 2) Terms: Progress payments.
- 3) Freight is F.O.B. League City, TX.
- 4) Availability: 210-240 days ARO.
- 5) This quotation is subject to approval and acceptance by Aluma Marine, LLC.
- 6) All applicable tax(es), duties and tariffs are additional and to be borne by customer.
- 7) All prices quoted above and payments are to be paid in U.S. dollars.
- 8) Manufacturer's Statement of Origin (MSO) will be sent upon receipt of final payment for boat.

CUSTOMER'S ACCEPTANCE

DATE:

PO#:

COMPANY:

BY:

AUTHORIZED SIGNATURE



OFFEROR FORM – Alternates

Alternate Item	Total Price
1. Furuno Solid Sate Doppler Radar Model DRS4D-NXT or equivalent	\$1962.40
2. Multi-function display: Furuno TZTL15F (15.6" display) or equivalent	\$4147.00
3. Furuno Class B AIS FA-50 or equivalent	\$981.20
4. 2 – Handheld thermal imager FLIR OS 640	\$6105.00
5. FLIR M 324CS Infrared camera	\$12,210.00
6. Minimum of 2 days of onsite training in League City, TX for minimum of 10 personnel	\$5500.00
7. Jack Plates for all propulsion engines	\$2640.00
8. 2 sliding doors on pilot house one next to the captain seat (starboard) and one next to the navigator seat (port)	\$6600.00
9. Two (2) Raymarine Axiom Pro 12 MFD touchscreen with GPS, Chart plotter, side scan, maps and transducers. Real vision 3D all in one sonar.	\$7480.00
10. One additional electric LED remote spot light installed on pilot house	\$1276.00
11. On the aft of the boat near the starboard dive door, a removeable winch structure to lift a minimum of 300 lbs.	\$3500.00
12. Replace two additional suspension seats with seat box on starboard aft of operation padded bench along interior starboard wall of pilot house with storage beneath; sized for stokes litter.	\$0.00
13. On forward part of cabin, approximately ½ size in height access door, water tight, for personnel to exit cabin onto forward deck space	\$2600.00
14. 15-year structural warrant on all hull, deck and cabin parts	\$5500.00



Aluma Marine, LLC.

Name of Firm/Company

Darren Bolotte

President

Agent's Name (Please Print)

Agent's Title

1901 Destrehan Ave, Bldg. A.

Harvey

LA

70058

Mailing Address

City

State

Zip

504-347-7898

504-347-2228

Telephone Number

Cell Phone Number

darren@alumamarine.com

Email Address

A handwritten signature in black ink, appearing to read "Darren Bolotte", written over a horizontal line.

11/19/2019

Authorized Signature

Date

ALUMA MARINE, LLC

RFP #20-Fire-001 (R)

Section D

City of League City

ALUMA MARINE, LLC

HEADQUARTERS & MANUFACTURING

1901 Destrehan Avenue
Harvey, LA 70058
T: (504) 347-7898
F: (504) 347-2228
www.alumamarine.com

SALES & MARKETING OFFICE

P.O. BOX 565
Yaphank, NY 11980
T: (631) 924-2800
F: (631) 924-5700
www.alumamarine.com

COMPANY REFERENCES

Jay Luhr

Owner
Luhr Bros, Inc.
PO Box 50
Columbia, IL 62236
(618) 406-1636

Charlie Piers

Owner
P & R Water Taxi, LLC
123 Ahui St.
Honolulu, HI 96803
(808) 478-8785

Duke Berghman

Owner
Buras Oilfield Services, LLC.
30975 Hwy 11
Buras, LA 70041
(504) 382-9346

Randy Hinojosa

General Manager
Midship Marine, Inc.
1029 Destrehan Ave.
Harvey, LA 70058
(504) 341-4359

Brian Hardcastle

Louisiana Wildlife & Fisheries
PO Box 37
Grand Isle, LA 70358
(985) 787-2163

ALUMA MARINE, LLC

RFP #20-Fire-001 (R)

Section E

City of League City

CONFLICT OF INTEREST QUESTIONNAIRE

For vendor doing business with local governmental entity

FORM CIQ

This questionnaire reflects changes made to the law by H.B. 23, 84th Leg., Regular Session.

This questionnaire is being filed in accordance with Chapter 176, Local Government Code, by a vendor who has a business relationship as defined by Section 176.001(1-a) with a local governmental entity and the vendor meets requirements under Section 176.006(a).

By law this questionnaire must be filed with the records administrator of the local governmental entity not later than the 7th business day after the date the vendor becomes aware of facts that require the statement to be filed. See Section 176.006(a-1), Local Government Code.

A vendor commits an offense if the vendor knowingly violates Section 176.006, Local Government Code. An offense under this section is a misdemeanor.

OFFICE USE ONLY

Date Received

1 Name of vendor who has a business relationship with local governmental entity.

Aluma Marine, LLC.

2 ☐ Check this box if you are filing an update to a previously filed questionnaire. (The law requires that you file an updated completed questionnaire with the appropriate filing authority not later than the 7th business day after the date on which you became aware that the originally filed questionnaire was incomplete or inaccurate.)

3 Name of local government officer about whom the information is being disclosed.

Non-applicable

Name of Officer

4 Describe each employment or other business relationship with the local government officer, or a family member of the officer, as described by Section 176.003(a)(2)(A). Also describe any family relationship with the local government officer. Complete subparts A and B for each employment or business relationship described. Attach additional pages to this Form CIQ as necessary.

A. Is the local government officer or a family member of the officer receiving or likely to receive taxable income, other than investment income, from the vendor?

☐ Yes

☐ No

B. Is the vendor receiving or likely to receive taxable income, other than investment income, from or at the direction of the local government officer or a family member of the officer AND the taxable income is not received from the local governmental entity?

☐ Yes

☐ No

5 Describe each employment or business relationship that the vendor named in Section 1 maintains with a corporation or other business entity with respect to which the local government officer serves as an officer or director, or holds an ownership interest of one percent or more.

6 ☐ Check this box if the vendor has given the local government officer or a family member of the officer one or more gifts as described in Section 176.003(a)(2)(B), excluding gifts described in Section 176.003(a-1).

7 
Signature of vendor doing business with the governmental entity

11/19/2019

Date

CONFLICT OF INTEREST QUESTIONNAIRE

For vendor doing business with local governmental entity

A complete copy of Chapter 176 of the Local Government Code may be found at <http://www.statutes.legis.state.tx.us/Docs/LG/htm/LG.176.htm>. For easy reference, below are some of the sections cited on this form.

Local Government Code § 176.001(1-a): "Business relationship" means a connection between two or more parties based on commercial activity of one of the parties. The term does not include a connection based on:

- (A) a transaction that is subject to rate or fee regulation by a federal, state, or local governmental entity or an agency of a federal, state, or local governmental entity;
- (B) a transaction conducted at a price and subject to terms available to the public; or
- (C) a purchase or lease of goods or services from a person that is chartered by a state or federal agency and that is subject to regular examination by, and reporting to, that agency.

Local Government Code § 176.003(a)(2)(A) and (B):

- (a) A local government officer shall file a conflicts disclosure statement with respect to a vendor if:

- (2) the vendor:

(A) has an employment or other business relationship with the local government officer or a family member of the officer that results in the officer or family member receiving taxable income, other than investment income, that exceeds \$2,500 during the 12-month period preceding the date that the officer becomes aware that

(i) a contract between the local governmental entity and vendor has been executed;
or

(ii) the local governmental entity is considering entering into a contract with the vendor;

(B) has given to the local government officer or a family member of the officer one or more gifts that have an aggregate value of more than \$100 in the 12-month period preceding the date the officer becomes aware that:

- (i) a contract between the local governmental entity and vendor has been executed; or
- (ii) the local governmental entity is considering entering into a contract with the vendor.

Local Government Code § 176.006(a) and (a-1)

- (a) A vendor shall file a completed conflict of interest questionnaire if the vendor has a business relationship with a local governmental entity and:

(1) has an employment or other business relationship with a local government officer of that local governmental entity, or a family member of the officer, described by Section 176.003(a)(2)(A);

(2) has given a local government officer of that local governmental entity, or a family member of the officer, one or more gifts with the aggregate value specified by Section 176.003(a)(2)(B), excluding any gift described by Section 176.003(a-1); or

(3) has a family relationship with a local government officer of that local governmental entity.

- (a-1) The completed conflict of interest questionnaire must be filed with the appropriate records administrator not later than the seventh business day after the later of:

- (1) the date that the vendor:

(A) begins discussions or negotiations to enter into a contract with the local governmental entity; or

(B) submits to the local governmental entity an application, response to a request for proposals or bids, correspondence, or another writing related to a potential contract with the local governmental entity; or

- (2) the date the vendor becomes aware:

(A) of an employment or other business relationship with a local government officer, or a family member of the officer, described by Subsection (a);

(B) that the vendor has given one or more gifts described by Subsection (a); or

(C) of a family relationship with a local government officer.



ALUMA MARINE, LLC

RFP #20-Fire-001 (R)

House Bill 89 Verification
Document

Public Information Act form

City of League City



City of League City House Bill 89 Verification

I, Darren Bolotte (Person name), the undersigned
representative of (Company or Business name) Aluma Marine, LLC.

(hereafter referred to as company) being an adult over the age of eighteen (18) years of age, after being duly sworn by the undersigned notary, do hereby depose and verify under oath that the company named-above, under the provisions of Subtitle F, Title 10, Government Code Chapter 2270:

1. Does not boycott Israel currently; and
2. Will not boycott Israel during the term of the contract.

Pursuant to Section 2270.001, Texas Government Code:

1. "Boycott Israel" means refusing to deal with, terminating business activities with, or otherwise taking any action that is intended to penalize, inflict economic harm on, or limit commercial relations specifically with Israel, or with a person or entity doing business in Israel or in an Israeli-controlled territory, but does not include an action made for ordinary business purposes; and
2. "Company" means a for-profit sole proprietorship, organization, association, corporation, partnership, joint venture, limited partnership, limited liability partnership, or any limited liability company, including a wholly owned subsidiary, majority-owned subsidiary, parent company or affiliate of those entities or business associations that exist to make a profit.

11-18-2019
DATE

Darren W. Bolotte
SIGNATURE OF COMPANY REPRESENTATIVE

On this the 18 day of November, 2019, personally appeared
Darren W. Bolotte, the above-named person, who after by me being
duly sworn, did swear and confirm that the above is true and correct.

NOTARY SEAL



Annette Buffone
NOTARY SIGNATURE

11/18/2019
Date



Texas Public Information Act

Steps to Assert that Information is Confidential or Proprietary

All proposals, data, and information submitted to the City of League City are subject to release under the Texas Public Information Act ("Act") unless exempt from release under the Act. You are not encouraged to submit data and/or information that you consider to be confidential or proprietary unless it is absolutely required to understand and evaluate your submission.

On each page where confidential or proprietary information appears, you must label the confidential or proprietary information. Do not label every page of your submission as confidential as there are pages (such as the certification forms and bid sheet with pricing) that are not confidential. It is recommended that each page that contains either confidential or proprietary information be printed on colored paper (such as yellow or pink paper). At a minimum, the pages where the confidential information appears should be labeled and the information you consider confidential or proprietary clearly marked.

Failure to label the actual pages on which information considered confidential appears will be considered as a waiver of confidential or proprietary rights in the information.

In the event a request for public information is filed with the City which involves your submission, you will be notified by the City of the request so that you have an opportunity to present your reasons for claims of confidentiality to the Texas Attorney General.

In signing this form, I acknowledge that I have read the above and further state (Please check one):

- ☒ The proposal/bid submitted to the City **contains NO confidential information** and may be released to the public if required under the Texas Public Information Act.
- ☐ The proposal/bid submitted **contains confidential information** which is labeled and which may be found on the following pages: _____
and any information contained on page number not listed above may be released to the public if required under the Texas Public Information Act.

Vendor/Proposer Submitting: Aluma Marine, LLC.

Signature:  Date: 11/19/2019

Print Name: Darren Bolotte Print Title: President