



## **REQUEST FOR PROPOSALS (RFP)**

**RFP #20-Fire-001 (R)**

### **All-Hazards Response Boat**

The City of League City is now accepting sealed proposals for an All-Hazards Response Boat.

**DEADLINE:** Sealed proposal submittals must be received by **2:00 p.m., CST, Tuesday, November 19, 2019**. (The clock located at the receptionist desk in the lobby of City Hall will be the official time.) Applicant names of all proposals received will be read aloud on this date at the City of League City, City Hall Executive Conference Room, 300 W. Walker Street, League City, TX 77573. Proposals received after the deadline stated herein will not be opened and shall be considered void and unacceptable.

**MARK ENVELOPE: #20-Fire-001 (R) All-Hazards Response Boat**

**DELIVERY ADDRESS:** Please submit one (1) marked original and five (5) exact duplicate copies of your complete proposal along with one (1) electronic copy (CD or flash drive) properly labeled and clearly marked with the RFP number and description to:

City of League City  
Purchasing Department  
300 West Walker  
League City, TX 77573  
Monday – Thursday: 7:30 am to 5:30 pm  
Friday: 7:30 am to 12:00 pm

Bids sent via courier must be sealed in a separate envelope inside of the mailer.

**POINT OF CONTACT:** All inquiries regarding this RFP must be made, in writing, to Purchasing Department, at [purchasing@leaguecitytx.gov](mailto:purchasing@leaguecitytx.gov). The City shall not be responsible for any verbal communication between any employee of the City and any potential firm. Only written requirements and qualifications will be considered. The City of League City reserves the right to reject any and all proposals, to waive irregularities, and to accept the proposal deemed the most advantageous to the City.

**Deadline for submission of questions is Wednesday, November 13, 2019 by 2:00 p.m.**

Released: Monday, November 4, 2019



**City of League City**  
**Request for Proposal #20-Fire-001 (R)**  
**All-Hazards Response Boat**

**1. Introduction:**

The City of League City is soliciting proposals from firms who are interested and qualified to produce an All-Hazards Response Boat. It is the intent of the City to select a single firm to accomplish all specifications outlined in this RFP..

**1.1 Clarification and Interpretation of RFP**

1.1.1 The words “must” or “will” or “shall” in this RFP indicate mandatory requirements. Taking exception to any mandatory requirement will be grounds for rejection of the proposal.

1.1.2 The City desires to avoid any misunderstanding where it is assumed that a feature is included in the proposal and turns out to be an optional, extra cost feature. As such, any question answered with an indication of compliance will be considered included at no additional cost. Any service that is referred to in the body of this response (does not pertain to attachments and brochures) will be considered included in the basic offer.

**1.2 Purpose**

The purpose of this RFP is to provide minimum requirements, solicit proposals and gain adequate information from which the City may evaluate the proposer’s products and services as they compare to other providers and as they pertain to the needs of the City’s organization as defined in this document.

**2. Background Information:**

**2.1 General**

League City is a home-rule, incorporated city with a 2018 population of approximately 106,803. The city encompasses approximately 52 square miles and is in the Houston metropolitan area. The city lies in north Galveston County southeast Harris County. League City is located approximately 26 miles southeast of downtown Houston and within 50 miles of Bush Intercontinental Airport. League City is experiencing rapid growth, adding approximately 3,000 residents a year. League City residents enjoy excellent schools, great parks, excellent public safety, recreational facilities, access to entertainment, and a unique heritage.

The city is governed by a Council/Manager form of government and municipal services are provided by 584 full-time equivalents. The City Council is an elected body consisting of the Mayor and seven Council Members. The City Manager, John Baumgartner, is responsible for all functions of city government. The organization is divided into functional departments and divisions reporting to the City Manager, and two (2) Assistant City Managers. The City is a CDBG entitlement community that receives federal funding from the Department of Housing and Urban Development.



**3. Scope of Work:**

The City of League City seeks competitive bids on an all-hazards response boat. Aside from the specifications please include in your statement of qualifications:

- Information about Quality Assurance Process
- Warrant Information
- Capabilities
- Relevant Experience (To include pictures of other relevant projects)
- General Arrangement and Drawings
- Timeline of build from contract award to delivery
- Qualifications
- Delivery no later than January 2021

All vendors shall be within 500 miles of 555 W. Walker, League City, TX 77573

**A. GENERAL SPECIFICATIONS:**

1. Hull Length: 30' minimum and 34' maximum (does not include outboard engines, engine bracket, engine guard, or rub rails)
2. Beam: 10 feet minimum (does not include rub rails)
3. Overall height not to exceed 13'6" to highest fixed point while on trailer and attached to a tow vehicle.
4. Draft should not exceed 24 inches from the keel to the waterline.
5. Person and cargo capacity 4,000 lbs.
6. Boat weight 15,200lbs approx.
7. Trailer weight 2,900lbs approx.
8. Combined boat and trailer weight 18,100 lbs. approx.
9. Fire pump rated at 800 - 1000 GPM at 150psi.
10. All outfitting to be marine grade

**B. HULL DESIGN & OUTFITTING:**

1. Hull shall be a mono-hull style modified "V" with dead rise to be determined by the builder to meet draft and performance requirements.



2. The boat shall have a bow door sized for personnel only (width should accommodate a standard stokes basket approximately 25"). The door shall have the ability to be latched in closed position.
3. Two 34" clear opening dive doors, one on the port side and one on the starboard side
4. Aluminum hull with rubber rub rail with swimmer's grab rails just above the waterline on port and starboard sides of vessel.
5. All decks shall be designed to be self-bailing and provide sufficient water egress.
6. Deck shall be the same level forward and aft to include the ability to walk around the pilot house on the deck.
7. Sacrificial anodes shall be provided to protect against galvanic corrosion.
8. The pump compartment shall be designed to facilitate easy access for pump, engine and mechanical maintenance.
9. A 3/4" aluminum double pad eye will be incorporated into the keel.
10. 1 ½" pipe safety railings are installed 6" above gunnel from dive doors, forward 72". Final hand rail designs will be approved by the customer prior to the start of manufacture.
11. Eight (8) 10" welded aluminum cleats.
12. Bottom plating .250" 5086
13. Side plating .190" 5086
14. Deck plating .124" 5086
15. Deck structure and component material are aluminum, they consist of 5086 aluminum alloy with thicknesses of .190", .250", and .375", and are fully welded to the hull and all deck height transverse bulkheads and longitudinal girders to contribute to the strength of the hull.
16. 3" Duramax D shaped rub rail along the full length of the boat at the gunnel height. With 5 diagonal D fenders installed both port and stbd.
17. Minimum of 2000GPH automatic bilge pumps. The number of pumps and locations to be determined by the vendor in accordance with applicable design standards and best practices.
18. One (1) T-handle drain plug.
19. ABYC approved carbon monoxide detector in cab. Gasoline fume detector in the pump engine compartment.





20. Recessed deck tie downs and a water wash down system.

**C. WELDING:**

1. The hull and superstructure are constructed of marine grade aluminum and MIG and TIG welded throughout.
2. All water seams are welded 100% on both sides.
3. Longitudinal structural members are stitch welded on opposite sides.
4. Hull plating and welds shall meet or exceed all applicable ABYC, ABS, or USCG standards

**D. FUEL SYSTEM:**

1. 160-gallon fuel tank minimum. Fuel supply for the fire pump is direct piped to the vessel fuel tank. The tank is made of aluminum. The tank is internally baffled to prevent shifting of the fuel load, and to ensure fuel pickup tube remains submerged in fuel. Shall be NFPA compliant.
2. Fuel tank is EPA compliant and meets all venting and overflow safety requirements.
3. Withdrawal tubes are stainless steel.
4. A WEMA fuel sender is attached to a NMEA fluid level interface to supply data to electronic gauges.

**E. TOWING EQUIPMENT:**

1. Minimum of 2" double pipe motor guard with tow line guides. The guard shall have an integrated stokes basket rack on top of guard.
2. Tow post shall be fitted aft on centerline.
3. Push knees shall be provided on the forward bow with Duramax rubber D shaped bumpers.
4. Scuba bottle storage will be provided forward. Quantity 4. Bottle storage when not in use will need be on spring hinges or equivalent. Final position of scuba bottle storage to be determined during pre-construction.

**F. PILOT HOUSE**

1. Note: measurements and arrangements are approximate and will be determined by the builder and the department during design prior to the start of manufacture.
2. The walk around pilot house 9' long by 8' 1" wide, with an interior clearance height of 76".



3. The pilot house is fully enclosed. Component material is all welded construction of 5086 aluminum alloy of 3/16" thickness.
4. The pilot house is equipped with two forward leaning windshields. One sliding and one fixed clamped tempered safety glass window on each side and two fixed clamped windows on aft wall of pilot house. One lockable hinged folding door on the aft face of the house.
5. The pilot house will have 4 overhead windows. Two over captain's head and two over passenger head.
6. The dash console provides ample room for electronics, throttles, switches, and steering wheel with cable components. Steering wheel to be outfitted with a speed wheel for low speed maneuvers.
7. Pilot house will have 2 ventilation/defrost fans to circulate air around windshield and cabin area.
8. 110V/220V rooftop unit for heating and A/C.
9. Includes marine fire extinguishers meeting or exceeding USCG or ABYC standards.
10. Helm station is starboard, overhead radio rack and final helm and console arrangement will be approved by the customer prior to the start of manufacture.
11. For proposal purposes, the following grab rails are anticipated. There is a grab rail alongside of the roof gutters on port and starboard sides. Final location and design of grab rails will be approved by the customer prior to the start of manufacture.
12. There are 2 overhead grab rails running lengthwise in the pilot house ceiling.
13. There is a grab rail near the console at the pump control station.
14. There are 2 grab rails on the exterior forward bulkhead of the pilot house.
15. There are 2 grab rails on the exterior aft bulkhead of the pilot house.
16. Four 12V red/white LED dome lights installed overhead inside of the cabin.
17. Suspension Seat and seat box with storage is provided for operator and navigator
18. Horn and compass provided.
19. Two additional suspension seats with seat box on starboard aft of the operator.
20. One padded bench along interior port wall of pilot house with storage beneath; sized for a stokes litter
21. Pilot house fitted with manual folding mast for installation of lighting and electronics.



22. All pilot house configuration specifications are anticipated. Final design will be approved by the customer prior to the start of manufacture.
23. Electric, remote LED spot light installed on pilot house.
24. AM/FM radio with a minimum of two speakers in the pilot house

**G. ELECTRICAL SYSTEM:**

1. The vessel's electrical system is 12VDC and 120VAC 60 Hz.
2. All electrical cable is marine grade tinned copper wire and labeled for each circuit.
3. Cables are routed in wire ways wherever possible. Cables are protected wherever exposed to potential damage.
4. Electrical cables are sized in accordance with the American Boat & Yacht Council recommendations.
5. All electrical cables are marked in accordance with the markings in electrical drawings.
6. All electrical switches are of marine grade and properly insulated.
7. The electrical system is grounded. The hull is not used as part of a galvanic feeding loop.
8. Wiring for radios, and all electronics are protected with circuit breakers. Additional circuit breakers are provided for future expansion of the electrical system.
9. Electrical compartments are provided in the cabin to house the electrical power, circuit protection and control components. Serviceable components are accessible. Power, circuit protection and control components are protected against the following: corrosion, excessive heat, excessive vibration, water spray and EMI and RFI.
10. Mounting plates for antenna are on the roof.
11. Heavy-duty wiper system.
12. Two (2) 12-volt power outlets and two (2) USB charging ports are provided in the dash console.
13. All wiring to be labeled at both ends.
14. Wiring diagrams and instruction manuals for manufacturer furnished items shall be provided on delivery.

**H. BATTERIES:**

1. Four marine batteries are installed complete with battery switches.



2. Two batteries are installed as the engine starting bank, one is for starting the pump motor and one is a dedicated house battery. A four-position battery distribution panel, located on the console, includes a battery switch for each battery, crossover switches to allow jumping in case of a dead battery, and 3 automatic charging relays that direct the alternator or battery charger to the weaker battery. All battery switches are located on lower panel of console.
3. All batteries shall be charged by the engines as well as by shore power.
4. All of the batteries are installed in plastic battery trays below a deck hatch outboard of the cabin.

**I. 120V AC ELECTRICAL:**

1. A 30-amp shore power system installed to supply battery charger.
2. Appropriate battery chargers are installed for use with the shore power system above.
3. Westerbeke 5 Kw generator (or equivalent) is installed to provide AC power

**J. 12V DC ELECTRICAL:**

1. Two Blue Seas 6 position distribution panels are installed on the console.
2. LED Navigation lights are installed to meet USCG requirements with hinging anchor light mast.
3. 12V 2000 GPH bilge pumps are installed with automatic float switch.
4. Includes 2 Blue Seas 12v/USB charging ports.
5. Additional breaker switches to be added for future addition of lighting.

**K. PROPULSION:**

1. A minimum of Twin Four Stroke outboards of 300HP or greater with appropriate shaft size as determined by the builder will be provided. These are complete with a fuel management system, dual key management system, dual key switch panel, power trim and tilt, harnesses. Minimum top speed of 38 knots.

**L. FIRE PUMP:**

1. The fire pump provided must be gasoline fueled, powered by a dedicated engine and capable of producing 800-1000 GPM at 150psi at the pump.
2. The pump control station is an FRC Pump Boss 200 Pressure/ RPM controller (or equal).
3. FRC dash mounted pressure (psi) and flow (gpm) meter.



4. Remote control 6" stainless shut off valve between the sea chest and pump with controls on the main console in the pilot house.
5. TFT Inline foam inductor with 6-7 ft pickup tube
6. TFT Monitor appropriately sized for fire system on front of boat with interchangeable fog nozzle and smooth bore with stacked tips and stream straightener. Location of monitor to be near the bow door however exact location will be determined during pre-construction.
7. Two (2) TFT 2.5 male gated NST discharges one 5" TFT LDH discharge terminated with a 5" Storz connection.
8. The pump is configured with through-hull suction into a sea chest with a minimum of 6" intake. The sea chest has a screened inlet, and a valve at the sea chest outlet.
9. Monitor to be manually operated
10. Fresh water flushing port installed just ahead of sea chest valve.
11. Fire suppression system is included in pump engine space.

**M. PAINT AND GRAPHICS:**

1. Deck area and interior/exterior of pilot house are painted with non-skid texture paint.
2. Single reflective red stripe around the exterior hull of vessel near the top of the hull.
3. Graphics "League City Public Safety" on pilot house along with League City Fire Department patch and League City Fire Marshal's Patch. Vector files of patches will be provided to the vendor. All graphics to be reflective.
4. Anti-Foulant Paint (hull) is provided.

**N. ELECTRONICS:**

1. One (1) Raymarine VHF provided.
2. Two (2) Raymarine Axiom Pro 9-inch (or larger) MFD touchscreen with GPS, Chart plotter, side scan, maps and transducers. Real vision 3D all in one sonar.
3. Raymarine Radar/radome provided.
4. Install one Motorola APX 8500 radio. Radio will be provided by agency.



**O. EMERGENCY LIGHTING, SIREN, AND WORK LIGHTS:**

1. Whelen Ion trio or equivalent emergency lighting shall be provided. Emergency lighting shall be visible from 360 degrees around the vessel. (Red/Blue/White)
2. LED Flood / work lights (4). These lights to be mounted on the pilot house and to illuminate the water around the boat. Also, the rear light to illuminate the deck area.
3. Courtesy lights for walkway illumination, red in color.
4. Siren / loudhailer with control panel shall be provided.

**P. TRAILER:**

1. A custom aluminum triple axle bunk trailer complete with electric brakes, spare tire, and tongue jack on trailer.
2. Galvanized steel wheels and electric disc brakes.
3. An adjustable bow stop and winch stand is provided with a manual 2-speed winch and strap.
4. Trailer LED lights are submersible.

**Q. WARRANTY:**

1. Warranty includes 1 full year limited warranty from bow to stern of vessel.
2. 10-year structural warranty on all hull, deck and cabin parts (including fuel tank).
3. All OEM equipment warranties passed through to customer.

**ALTERNATES (Priced separately):**

1. Furuno Solid Sate Doppler Radar Model DRS4D-NXT or equivalent
2. Multi-function display: Furuno TZTL15F (15.6" display) or equivalent
3. Furuno Class B AIS FA-50 or equivalent
4. 2 – Handheld thermal imager FLIR OS 640
5. FLIR M 324CS Infrared camera
6. Minimum of 2 days of onsite training in League City, TX for minimum of 10 personnel



7. Jack Plates for all propulsion engines
8. 2 sliding doors on pilot house one next to the captain seat (starboard) and one next to the navigator seat (port)
9. Two (2) Raymarine Axiom Pro 12 MFD touchscreen with GPS, Chart plotter, side scan, maps and transducers. Real vision 3D all in one sonar.
10. One additional electric LED remote spot light installed on pilot house
11. On the aft of the boat near the starboard dive door, a removeable winch structure to lift a minimum of 300 lbs.
12. Replace two additional suspension seats with seat box on starboard aft of operation padded bench along interior starboard wall of pilot house with storage beneath; sized for stokes litter.
13. On forward part of cabin, approximately ½ size in height access door, water tight, for personnel to exit cabin onto forward deck space.
14. 15-year structural warrant on all hull, deck and cabin parts

#### **4. Contract Terms and Conditions:**

##### **4.1 General**

This contract is for a term not to exceed two (2) years (proposers to submit schedule), with extension terms available, upon agreement of the parties. All rates/fees shall be fixed for the contract term, and for any subsequent renewal terms – there will be no provision for price adjustments at any renewal, as the annually renewable agreement is meant as an option for either party to exit the contractual obligation at its discretion.

##### **4.2 Indemnification**

It is understood that any resulting contract executed will contain the following language:

It is further agreed that the firm (separately and collectively the “Indemnitee”) shall indemnify, hold harmless, and defend the City, its officers, agents, and employees from and against any and all claims, losses, damages, causes of action, suits and liability of every kind, including all expenses of litigation, court costs, and attorney’s fees, for injury to or death of any person or for damage to any property arising out of or in connection with the work done by the firm under this contract. Such indemnity shall apply regardless of whether the claims, losses, damages, causes of action, suits or liability arise in whole or in part from the negligence of the City, any other party indemnified hereunder, the Firm, or any third party.



#### 4.3 Release

It is understood that any resulting contract executed will contain the following language:

The firm assumes full responsibility for the work to be performed hereunder and hereby releases, relinquishes, and discharges the City, its officers, agents, and employees from all claims, demands, and causes of action of every kind and character, including the cost of defense thereof, for any injury to or death of any person and any loss of or damage to any property that is caused by, alleged to be caused by, arising out of, or in connection with the firm's work to be performed hereunder.

This release shall apply regardless of whether said claims, demands, and causes of action are covered in whole or in part by insurance and regardless of whether such injury, death, loss, or damage was caused in whole or in part by insurance and regardless of whether such injury, death, loss or damage was caused in whole or in part by the negligence of the City, any other party released hereunder, the firm, or any third party.

### 5. Instructions to Proposers:

#### 5.1 General

This section outlines specific instructions for proposal submissions. **Proposers not adhering to these instructions shall be disqualified without further consideration.** The City shall have the right to cancel any or all item(s) without obligation if delivery is not made on or before the time(s) specified.

5.1.1 At the public opening, there will be no disclosure of contents to competing firms, and all proposals will be kept confidential during the negotiation process. Except for trade secrets and confidential information which the firm identifies as proprietary, all proposals will be open for public inspection after the contract award. All proposals become the property of the City of League City.

5.1.2 The City of League City requires comprehensive responses to every section within this RFP. Conciseness and clarity of content are emphasized and encouraged. Vague and general proposals will be considered non-responsive and will result in disqualifications. To facilitate the review of the responses, Firms shall follow the described proposal format. The intent of the proposal format requirements is to expedite review and evaluation. It is not the intent to constrain Vendors with regard to content, but to assure that the specific requirements set forth in this RFP are addressed in a uniform manner amenable to review and evaluation. Failure to arrange the proposal as requested may result in the disqualification of the proposal. **It is requested that proposals be limited to no more than 25 pages, excluding resumes and sample documents.** Proposals shall have 1" margins and be single-sided, single spaced, using Times New Roman 12 point font. All pages of the proposals must be numbered and the proposal must contain an organized, paginated table of contents corresponding to the sections and pages of the proposal.





**5.2 Submission Package**

Proposer's submission package shall consist of the following:

- i. Completed Proposal Cover Sheet
- ii. Tab A - Qualifications and Experience
- iii. Tab B - Project Methodology
- iv. Tab C- Pricing and Fees
- v. Tab D- Statement of Qualifications, to include References
- vi. Financial Statements, last 12 months
- vii. Tab E- Conflict of Interest Questionnaire
- viii. Tab F- Proposer Certification/Addenda Acknowledgement and Addenda(s), if applicable
- ix. House Bill 89 Verification Document
- x. Public Information Act form
- xi. Texas Public Information Act

**5.2 Project Timeline**

The vendor/contractor selection process will follow the timeline shown below. Estimated key milestone dates for the completion of the project are also included:

**Request for Proposals Issued: November 4, 2019**

**Deadline for Submitting Questions: November 13, 2019, 2:00 p.m.**

**Proposal Submission Deadline: November 19, 2019, 2:00 p.m.**

**Selection Process: November 19, 2019 beginning at 2pm**

**Planned Award of Contract: December 2019**

**Planned Notice to Proceed Issued: December 2019**

**5.3 Statement of Compliance**

By submission of a response to this RFP, proposer acknowledges full compliance with required specifications and all terms and conditions as detailed in the RFP.

**5.4 TAB A – Qualifications and Experience**

- 5.4.1 Briefly introduce your organization, providing a summary of the administration and staffing of your agency, including multiple offices, if applicable.
- 5.4.2 Describe the experience of your organization in the last thirty-six (36) months in performing services of similar size and scope.
- 5.4.3 Give a detailed description of your facility. Photos and other printed material can be used to aid in your description.

**5.5 TAB B – Project Methodology**

- 5.5.1 Provide an estimated timeline to complete the proposed work



- 5.5.2 Provide Drawings and/or Proof of Concept as well as production of all-hazard boat information
- 5.5.3 Provide Product shipment and Deliver Information
- 5.5.4 Provide any warranty and after shipment maintenance/repair information.
- 5.5.5 Work plan shall clearly distinguish the firm's duties and responsibilities and those of the City. Absence of this distinction shall mean the firm is assuming full responsibility for all tasks.
- 5.6 **TAB C – Pricing and Fees**
  - 5.6.1 The proposal shall provide a breakdown of fees for each phase of the project to include itemization of all costs (i.e., applicable delivery fees, manpower hours etc.)
  - 5.6.2 The proposal shall include an hourly fee schedule for additional services required for successful completion of this project but not specifically identified in this RFP or optional services that may enhance the City's benefit.

The City is not responsible for expenses incurred in preparing and submitting a proposal. Such costs shall not be included in the proposal.

- 5.7 **TAB D – Statement of Qualifications to include References**
  - 5.7.1 Provide at least five (5) references for governmental agencies for which you have provided this type of services. Include the name of the agency, contact name, telephone, email address, dates/length of the contract, and a brief summary of the work.
  - 5.7.2 Include names, telephone numbers and e-mails of person who the City of League City can contact for references regarding the firm's past performance on similar projects.

5.8 **TAB E – Conflict of Interest**

- 5.8.1 Provide a completed copy of the Conflict of Interest Questionnaire (Form CIQ).

The Texas legislature recently enacted House Bill 914 which added Chapter 176 to the Texas Local Government Code. Chapter 176 mandates the public disclosure of certain information concerning persons doing business or seeking to do business with the City of League City, including affiliations and business and financial relationships such persons may have with City of League City officers. The form can be located at the Texas Ethics Commission website:

[https://www.ethics.state.tx.us/filinginfo/conflict\\_forms.htm](https://www.ethics.state.tx.us/filinginfo/conflict_forms.htm)

By doing business or seeking to do business with the City of League City including submitting a response to this RFP, you acknowledge that you have been notified of the requirements of Chapter 176 of the Texas Local Government Code and you are representing that you are in compliance with them.



**Any information provided by the City of League City is for information purposes only. If you have concerns about whether Chapter 176 of the Texas Local Government Code applies to you or the manner in which you must comply, you should consult an attorney.**

The following are the current City Council and City employees who are anticipated to either recommend or approve award of the proposal.

City Council:	Mayor	Pat Hallisey
	Councilmember	Andy Mann
	Councilmember	Hank Dugie
	Councilmember	Larry Millican
	Mayor Pro Tem	Todd Kinsey
	Councilmember	Greg Gripon
	Councilmember	Chad Tressler
	Councilmember	Nick Long
City Staff:	City Manager	John Baumgartner
	Assistant City Manager	Odgen “Bo” Bass
	Assistant City Manager	Michael Kramm
	Fire Chief	Gary Warren
	Asst. Fire Chef/Fire Marshal	Tommy Cones
	Deputy Fire Marshal	Jeff Allen

## **6. Proposal Evaluation Process**

All proposals will be screened by an evaluation committee. The evaluation committee shall screen and rate all of the responses that are submitted. Evaluation ratings will be on a 100-point scale and those proposers selected for a short list may be invited to attend an interview, at the proposers own expense. Any invitation for an oral presentation will be solely for the purpose of clarifying proposals received from each qualifying proposer and will not represent any decision on the part of the evaluation committee as to the selection of a successful proposer.

The City’s process is as follows:

- 6.1 City staff shall recommend an evaluation committee which will be used to evaluate all proposals. The City will evaluate all proposals based on the following criteria:
  - 6.1.1 **Qualifications and Experience – 20 pts**
  - 6.1.2 **Schedule/Project Methodology/Drawings & Proof of Concept – 30 pts**
  - 6.1.3 **Pricing and Fees– 30 pts**
  - 6.1.4 **References – 20 pts**
- 6.2 Once proposals are scored, the evaluation team will select finalists and decide whether interviews should be conducted. After interviews are performed, if needed, the evaluation team may request the finalists to submit a Best and Final Offer (BAFO).



- 6.3 Should negotiations be unsuccessful, the City shall enter into negotiations with the next, highest ranked Vendor. The process shall continue until an agreement is reached with a qualified Vendor.
- 6.4 This RFP does not commit the City to pay for any direct and/or indirect costs incurred in the preparation and presentation of a response. All finalist(s) shall pay their own costs incurred in preparing for, traveling to and attending interviews.
- 6.5 The City reserves the right to negotiate the final fee prior to recommending any Vendor for a contract.

The City reserves the right to use all pertinent information (also learned from sources other than disclosed in the RFP process) that might affect the City's judgement as to the appropriateness of an award to the best evaluated proposer. This information may be appended to the proposal evaluation process results.



**Request for Proposal Cover Sheet**

**DUE DATE: Tuesday, November 19, 2019 by 2:00 p.m.**

**OFFEROR FORM – Base**

In accordance with the attached instructions, terms, conditions, and Scope of Specifications we submit the following proposal to City of League City.

Primary proposal for Endeavor 30 Fireboat with trailer and delivery

**TOTAL PROPOSED COST**

\$425,490.00

Four hundred twenty five thousand, four hundred ninety dollars and no cents.

**Total Proposed Costs in Words**

All prices are to be F.O.B. Destination. Any freight/delivery charges are to be included.



**Request for Proposal Cover Sheet**

**DUE DATE: Tuesday, November 19, 2019 by 2:00 p.m.**

**OFFEROR FORM – Base**

In accordance with the attached instructions, terms, conditions, and Scope of Specifications we submit the following proposal to City of League City.

Alternate proposal for Endeavor 34 Fireboat with trailer and delivery

**TOTAL PROPOSED COST**

\$ 466,260.00 \_\_\_\_\_

Four hundred sixty six thousand, two hundred sixty dollars and no cents. \_\_\_\_\_

**Total Proposed Costs in Words**

All prices are to be F.O.B. Destination. Any freight/delivery charges are to be included.



## **OFFEROR FORM – Alternates**

<b>Alternate Item</b>	<b>Total Price</b>
1. Furuno Solid Sate Doppler Radar Model DRS4D-NXT or equivalent	Not included in proposed price.
2. Multi-function display: Furuno TZTL15F (15.6" display) or equivalent	Not included in proposed price.
3. Furuno Class B AIS FA-50 or equivalent	Not included in proposed price.
4. 2 – Handheld thermal imager FLIR OS 640	Not included in proposed price.
5. FLIR M 324CS Infrared camera	Not included in proposed price.
6. Minimum of 2 days of onsite training in League City, TX for minimum of 10 personnel	Not included in proposed price.
7. Jack Plates for all propulsion engines	Not included in proposed price.
8. 2 sliding doors on pilot house one next to the captain seat (starboard) and one next to the navigator seat (port)	Included in price for Endeavor 34
9. Two (2) Raymarine Axiom Pro 12 MFD touchscreen with GPS, Chart plotter, side scan, maps and transducers. Real vision 3D all in one sonar.	Not included in proposed price.
10. One additional electric LED remote spot light installed on pilot house	Not included in proposed price.
11. On the aft of the boat near the starboard dive door, a removeable winch structure to lift a minimum of 300 lbs.	Not included in proposed price.
12. Replace two additional suspension seats with seat box on starboard aft of operation padded bench along interior starboard wall of pilot house with storage beneath; sized for stokes litter.	Included in price for both vessels
13. On forward part of cabin, approximately ½ size in height access door, water tight, for personnel to exit cabin onto forward deck space	\$2,500.00
14. 15-year structural warrant on all hull, deck and cabin parts	No additional cost. Standard.



Silver Ships Inc.

Name of Firm/Company

David Hunt

Project Manager

Agent's Name (Please Print)

Agent's Title

PO Box 1260, Theodore, AL 36590

Mailing Address

City

State

Zip

251-973-0000

251-472-7290

Telephone Number

Cell Phone Number

dhunt@silverships.com

Email Address

[SIGNED HARD COPY PROVIDED]

18 Nov 2019

Authorized Signature

Date





**PROPOSER CERTIFICATION AND ADDENDA ACKNOWLEDGEMENT**

By signature affixed, the bidder certifies that neither the bidder nor the firm, corporation, partnership, or institution represented by the bidder, or anyone acting for such firm, corporation, or institution has violated the anti-trust laws of this State, codified in Section 15.01, et seq., Texas Business and Commerce Code, or the Federal antitrust laws, nor communicated directly or indirectly the bid made to any competitor or any other person engaged in such fine of business.

Bidder has examined the specifications and has fully informed themselves as to all terms and conditions. Any discrepancies or omissions from the specifications or other documents have been clarified with City representatives and noted on the bid submitted.

Bidder guarantees product offered will meet or exceed specifications identified in this RFP.

**Bidder must initial next to each addendum received in order to verify receipt:**

Addendum #1 N/A      Addendum #2 \_\_\_\_\_      Addendum #3 \_\_\_\_\_  
Addendum #4 \_\_\_\_\_      Addendum #5 \_\_\_\_\_      Addendum #6 \_\_\_\_\_

**Bidder Must Fill in and Sign:**

NAME OF FIRM/COMPANY: Silver Ships Inc.  
REPRESENTATIVE's NAME: David Hunt  
REPRESENTATIVE's TITLE: Project Manager  
MAILING ADDRESS: PO Box 1260  
CITY, STATE, ZIP: Theodore, AL 36590  
PHONE & FAX NUMBERS: 251-973-0000    FAX 251-973-2711  
E-MAIL ADDRESS: dhunt@silverships.com  
AUTHORIZED SIGNATURE: [SIGNED HARD COPY PROVIDED]  
DATE: 18 Nov 2019



**NO PROPOSAL NOTIFICATION**

RFP #20-Fire-001  
All-Hazards Response Boat

SUPPLIER NAME: \_\_\_\_\_

ADDRESS: \_\_\_\_\_

\_\_\_\_\_

AGENT'S NAME: \_\_\_\_\_ TELEPHONE: \_\_\_\_\_

The CITY OF LEAGUE CITY is interested in receiving competitive pricing on all items bid. We also desire to keep your firm as a bidder and a supplier of materials and equipment. Therefore, it is important for us to determine why you are not bidding on this item. We will analyze your input carefully and try to determine if future changes are needed in our specifications and procedures.

I did not bid for the following reasons: (PLEASE CHECK ONE OF THE LISTED REASONS)

\_\_\_\_\_ Do not supply the requested product.

\_\_\_\_\_ Quantities offered are too small or too large to be supplied by your company. (Please circle one of the underlined.)

\_\_\_\_\_ Specifications are "too tight" or written around a particular product. (Please elaborate on this item.)

\_\_\_\_\_ Cannot bid against manufacturer or jobber on this item. (Please circle one of the underlined).

\_\_\_\_\_ Time frame for bidding was too short for my organization.

\_\_\_\_\_ Not awarded a previous contract by the City when you felt you were low bidder.

\_\_\_\_\_ Other \_\_\_\_\_

**Failure to submit a bid or no-bid notification may result in removal from future bidders' lists.**

If you wish to remain on the City's bid list for this item, please indicate:

\_\_\_\_\_ I wish to remain. \_\_\_\_\_ I do not wish to remain.



## SECTION II – GENERAL SPECIFICATIONS

### 1.0 INTENTION OF SPECIFICATIONS

The City of League City is now accepting sealed proposals for All-Hazards Response Boat.

### 2.0 PROPOSAL ACCEPTANCE

The City of League City reserves the right to accept or reject any and all proposals, to accept any proposal deemed advantageous and to waive irregularity in the proposals. By bidding, the Contractor acknowledges and will adhere to all bid specifications as stated within this bid packet.

### 3.0 TERM OF CONTRACT

This contract is for a term not to exceed two (2) years (proposers to submit schedule), with extension terms available, upon agreement of the parties. All rates/fees shall be fixed for the contract term, and for any subsequent renewal terms – there will be no provision for price adjustments at any renewal, as the annually renewable agreement is meant as an option for either party to exit the contractual obligation at its discretion.

### 4.0 TERMINATION OF CONTRACT

The City of League City reserves the right to terminate the contract immediately in the event of the following actions on part of the successful Contractor:

- a. By failing to pay insurance, liens, claims, or other charges.
- b. By failing to pay any payments due the City, State or Federal Government from the successful bidder or its principals, including, but not limited to payments identified in this agreement or any taxes, fees, assessments, or liens.
- c. Upon the institution of voluntary or involuntary bankruptcy proceedings against the successful bidder or upon dissolution of the firm or business.
- d. By violation of any provision of the agreement.
- e. By failing to respond within the prescribed time, including weekends and holidays.
- f. By providing substandard service, or service the City deems to be otherwise unacceptable.
- g. Multiple instances of missed pickups.
- h. Additionally, the City and Contractor reserve the right to terminate the contract without cause upon written notice thirty (30) days prior to the date of termination.

### 5.0 EVALUATION AND AWARD

The City shall consider all factors it believes to be relevant in selecting the offer that provides the best value for the City including, but not limited to: (a) adherence to service description/specification/qualification requirement; and (b) price. The City of League City reserves



the right to accept or reject any bid or combination of bids deemed advantageous to it; however, it is the intent of the City to award to a single service provider representing the best value to the City with regard to the factors cited above.

6.0 SPECIFICATION CHANGES

**NO PERSON** has the authority to verbally alter these specifications. Any changes to specifications will be made in writing and posted to the City of League City website at: <http://leaguecitytx.gov/bids.aspx>.

7.0 INVOICES

Invoices must be itemized and issued by department on a monthly basis. Any invoice, which cannot be verified by the contract price and/or is otherwise incorrect, will be returned to the Contractor for correction. Invoices submitted for payment shall be addressed to: City of League City, Accounts Payable, 300 W. Walker St, League City, TX 77573 and emailed to [accountspayable@leaguecitytx.gov](mailto:accountspayable@leaguecitytx.gov).

8.0 REFERENCES

Provide references for similarly successful projects from five (5) agencies, firms, or industry customers, to include the name of the agency/firm, contact name, telephone and **email address**.

9.0 INDEMNITY CLAUSE

The Contractor agrees to indemnify and save harmless the City of League City and its officers, agents and employees from any and all claims, causes or action, and damages of every kind, for injury to or death of any person and damages, to property arising out of or in connection with the work done by Contractor under this contract, and including acts or omissions of the City of League City or its officers, agents, or employees in connection with said contract.

10.0 EQUAL OPPORTUNITY EMPLOYER

The successful Contractor shall warrant and agree that he/she is an Equal Opportunity Employer. Should complaints of any form of discrimination, either in dispensation of the service, or within company hiring policies be substantiated, this contract may be terminated immediately.

11.0 INSURANCE REQUIREMENTS

An original, certified copy of an insurance certificate listing the City of League City as additional insured, must be submitted within ten (10) days of request. The successful Contractor will be required to maintain, at all times during performance of the contract, the insurance detailed below.



Failure to provide this insurance certificate within the specified amount of time may result in disqualification of bid.

(a) Workman's Compensation Insurance as required by laws and regulations applicable to and covering employees of Contract engaged in the performance of the work under this agreement with a limit of not less than \$1,000,000.00

(b) Employers Liability Insurance protecting contractor against common law liability, in the absence of statutory liability, for employee bodily injury arising out of the master-servant relationship with a limit of not less than \$1,000,000.00.

(c) Comprehensive General Liability Insurance including products/completed operation with limits of liability of not less than: Bodily Injury \$1,000,000.00 per each person, \$1,000,000.00 per each occurrence/aggregate; Property Damage \$1,000,000.00 per each occurrence;

(d) Excess Liability Insurance Comprehensive General Liability, Comprehensive Automobile Liability and coverages afforded by the policies above, with the minimum limits of \$1,000,000.00 excess of specified limits.

An original, certified copy of an insurance certificate listing the City of League City as additional insured, must be submitted within ten (10) days of request. The successful Contractor will be required to maintain, at all times during performance of the contract, the insurance detailed on the "Insurance Requirements" form, which is provided as an attachment. Failure to provide this insurance certificate within the specified amount of time may result in disqualification of bid.

## **12.0 PRICING**

Prices for all goods and/or services shall be firm for the duration of this contract. Prices shall be all inclusive. No price changes, additions or subsequent qualifications will be honored during the course of the initial contract. If there are any additional charges of any kind, other than those mentioned above, specified or unspecified, Contractor MUST indicate the items required and attendant costs or forfeit the right to payment for such items.

## **13.0 COMPLIANCE**

All equipment, supplies and work furnished under this contract shall comply with applicable laws, ordinances and regulations. Contractor shall obtain and pay for such permits and inspections as are required for the legal performance of this work, unless otherwise specified.

## **14.0 ASSIGNMENT**

The successful Contractor may not assign, sell or otherwise transfer this contract without prior written consent of the City of League City.



**15.0 CONTRACTOR'S RESPONSIBILITY**

At the time of the opening of bids, each Contractor shall be presumed to have inspected the sites (if applicable) and to have read and be thoroughly familiar with the contract requirements. The failure or omission of any Contractor to examine any form, instrument, document or site shall in no way relieve any bidder from any obligation in respect to this bid.

**16.0 ALTERNATE VENDOR(S)**

To insure an uninterrupted source of service, City of League City reserves the right to award multiple contracts. The entire contract will be awarded to a "primary" Contractor as the lowest responsive and responsible Contractor, and an "alternate" Contractor for use as necessary due to time constraints, availability, etc., on the part of the primary. City of League City reserves the right to use other vendors when the response time is not met. Also, the City shall reserve the right to purchase from the alternate source if the following conditions exist:

16.1 Service and/or products are not acceptable (does not meet specifications), and Contractor fails to provide alternate, acceptable offering;

16.2 Contractor fails to respond to need for service, i.e. does not return phone calls.

**17.0 ESTIMATED QUANTITIES**

Quantities indicated are estimated based upon the best available information. The City reserves the right to increase or decrease the quantities by any amount deemed necessary to meet its needs without any adjustments in the bid price.

**18.0 COMPLIANCE WITH LAWS**

Bidder shall comply with all Federal and State laws and City Ordinances and Codes applicable to the Bidder's operation under this contract. These specifications and the contract resulting here from shall be fully governed by the laws of the State of Texas, and shall be fully performable in Galveston County, Texas, where venue for any proceeding arising hereunder will lie.

**19.0 SILENCE OF SPECIFICATIONS**

The apparent silence of specifications as to any detail, or the apparent omission from it of a detailed description concerning any point, shall be regarded as meaning that only the best commercial practice is to prevail and that only material and workmanship of the finest quality shall be used. All interpretations of specifications shall be made on the basis of this statement.



**20.0 SEVERABILITY**

If any section, subsection, paragraph, sentence, clause, phrase or word of these requirements or specifications shall be held invalid, such holding shall not affect the remaining portions of these requirements and the specifications and it is hereby declared that such remaining portions would have been included in these requirements and the specifications as though the invalid portion had been omitted.

**21.0 ETHICS ACKNOWLEDGEMENT**

Contractor hereby acknowledges that it is familiar with the provisions of Section 2-34(i) of the Code of Ordinances of the City of League City which provides, among other things, that if within two (2) years after the commencement of this contract or agreement Contractor hires a City official, former City official, appointed City officer, former appointed City officer, appointed City executive employee, or former appointed City executive employee who, while acting in such capacity, had substantial and personal involvement with the negotiation of this contract or agreement, then this contract or agreement shall, at the option of the City Manager, be cancelled and/or Contractor shall be barred from additional contracting with the City of League City for a period of three (3) years.

**22.0 CONFLICT OF INTEREST**

Chapter 176 of the Texas Local Government Code requires that any person, who enters or seeks to enter in to a contract for the sale or purchase of property, goods or services with a local government entity and who has an employment or other business relationship with a local government officer of family member of the officer, as described by Texas Local Government Code Section 176.006, shall file a completed conflict of interest questionnaire with the City within seven (7) business days after the later of:

1. The date the person begins discussions or negotiations to enter in to a contract, including submission of a bid or proposal, or
2. The date the person becomes aware of facts that require the statement to be filed.

Additional information and the form to be used to file this notice can be found at:

[www.ethics.state.tx.us/filinginfo/conflict\\_forms.htm](http://www.ethics.state.tx.us/filinginfo/conflict_forms.htm).

**23.0 RIGHT OF ASSURANCE**

Whenever one (1) party to this contract in good faith has reason to question the other party's intent to perform, he may demand that the other party give a written assurance of this intent to perform.



In the event that demand is made and no assurance is given within five (5) days, the demanding party may treat this failure as an anticipatory repudiation of this contract.

#### 24.0 DISCLOSURE OF INTERESTED PARTIES

In compliance with Texas Government Code § 2252.908, the winning bidder must submit a Disclosure of Interested Parties (Texas Ethics Commission Form 1295) to the City at the time of contract execution. Pursuant to the rules prescribed by the Texas Ethics Commission (TEC), Form 1295 must be completed online through the TEC's website, [www.ethics.state.tx.us/file](http://www.ethics.state.tx.us/file), where it will be assigned a certificate number. The winning bidder must print, sign and notarize, and provide to the City. Neither the City nor its consultants have the ability to verify the information included in Form 1295, and neither have an obligation nor undertake responsibility for advising any bidder with respect to the proper completion of the TEC Form 1295.

Please sign and return the compliance agreement which addresses the State of Texas House and Senate bills discussed below.

HB 1295: Beginning January 1, 2016, state law requires awarded vendors contracting with the City to complete and submit the Certificate of Interested Parties (Form 1295). This form is located on the Texas Ethics Commission website and should be completed and submitted upon notification of pending award at [https://www.ethics.state.tx.us/whatsnew/elf\\_info\\_form1295.htm](https://www.ethics.state.tx.us/whatsnew/elf_info_form1295.htm)

HB 89: Beginning September 1, 2017, state law prohibits governmental entities from contracting with companies who boycott Israel. The Texas State Comptroller maintains a list of companies that boycott Israel. Inclusion on this list will prevent the City of League City from entering into a contract with the contractor. Below is a link to the list. <https://comptroller.texas.gov/purchasing/publications/divestment.php>

SB 252: Beginning September 1, 2017, a governmental entity may not enter into a governmental contract with a company that does business with Iran, Sudan, or any known terrorist organization. The Texas State Comptroller maintains a list of companies known to have contracts with or provide supplies or services to a foreign terrorist organization. Inclusion on this list will prevent the City of League City from entering into a contract with the contractor. Below is a link to the list. <https://comptroller.texas.gov/purchasing/publications/divestment.php>





**City of League City  
House Bill 89 Verification**

I, David Hunt (Person name), the undersigned  
representative of (Company or Business name) Silver Ships Inc.

(hereafter referred to as company) being an adult over the age of  
eighteen (18) years of age, after being duly sworn by the undersigned notary, do hereby depose and  
verify under oath that the company named-above, under the provisions of Subtitle F, Title 10,  
Government Code Chapter 2270:

1. Does not boycott Israel currently; and
2. Will not boycott Israel during the term of the contract.

*Pursuant to Section 2270.001, Texas Government Code:*

1. *"Boycott Israel" means refusing to deal with, terminating business activities with, or otherwise taking any action that is intended to penalize, inflict economic harm on, or limit commercial relations specifically with Israel, or with a person or entity doing business in Israel or in an Israeli-controlled territory, but does not include an action made for ordinary business purposes; and*
2. *"Company" means a for-profit sole proprietorship, organization, association, corporation, partnership, joint venture, limited partnership, limited liability partnership, or any limited liability company, including a wholly owned subsidiary, majority-owned subsidiary, parent company or affiliate of those entities or business associations that exist to make a profit.*

18 Nov 2019  
DATE

[SIGNED HARD COPY PROVIDED]  
SIGNATURE OF COMPANY REPRESENTATIVE

On this the \_\_\_\_\_ day of \_\_\_\_\_, 20\_\_\_\_, personally appeared  
\_\_\_\_\_, the above-named person, who after by me being  
duly sworn, did swear and confirm that the above is true and correct.

NOTARY SEAL

\_\_\_\_\_  
NOTARY SIGNATURE

\_\_\_\_\_  
Date



## **Texas Public Information Act**

### Steps to Assert that Information is Confidential or Proprietary

All proposals, data, and information submitted to the City of League City are subject to release under the Texas Public Information Act ("Act") unless exempt from release under the Act. You are not encouraged to submit data and/or information that you consider to be confidential or proprietary unless it is absolutely required to understand and evaluate your submission.

**On each page where confidential or proprietary information appears,** you must label the confidential or proprietary information. Do not label every page of your submission as confidential as there are pages (such as the certification forms and bid sheet with pricing) that are not confidential. It is recommended that each page that contains either confidential or proprietary information be printed on colored paper (such as yellow or pink paper). At a minimum, the pages where the confidential information appears should be labeled and the information you consider confidential or proprietary clearly marked.

**Failure to label the actual pages on which information considered confidential appears will be considered as a waiver of confidential or proprietary rights in the information.**

In the event a request for public information is filed with the City which involves your submission, you will be notified by the City of the request so that you have an opportunity to present your reasons for claims of confidentiality to the Texas Attorney General.

**In signing this form, I acknowledge that I have read the above and further state (Please check one):**

- ☒ The proposal/bid submitted to the City **contains NO confidential information** and may be released to the public if required under the Texas Public Information Act.
- ☐ The proposal/bid submitted **contains confidential information** which is labeled and which may be found on the following pages: \_\_\_\_\_  
and any information contained on page number not listed above may be released to the public if required under the Texas Public Information Act.

Vendor/Proposer Submitting: Silver Ships Inc.

Signature: [SIGNED HARD COPY PROVIDED] Date: 18 Nov 2019

Print Name: David Hunt Print Title: Project Manager



**Awarded vendor will be required to execute this agreement prior to commencement of service. This is provided for INFORMATIONAL PURPOSES ONLY. Any exceptions to this agreement shall be included in proposal response.**

This AGREEMENT ("Agreement") is entered into by and between [REDACTED] ("Contractor"), located at [REDACTED] and City of League City ("City"), a municipal corporation, located at 300 W. Walker, League City, Texas 77573 on the date set forth below.

**Terms:**

1. **Scope of Services:** Contractor will perform the designated services and/or provided the designated products, as set forth in **Exhibit A**, which is attached and incorporated herein, and which can be generally described as [REDACTED].
2. **Term and Termination:** This Agreement shall begin on [REDACTED], and shall terminate on [REDACTED]. This City reserves the right to terminate this Agreement for convenience upon seven (7) days-notice to the Contractor. Upon such termination, the City shall pay Contractor, at the rate set out in **Exhibit A**, for services satisfactorily performed or products satisfactorily provided up through the date of termination. Notwithstanding any provision in this Agreement to the contrary, the City will not be required to pay or reimburse Contractor for any services performed or for expenses incurred by Contractor after the date of the termination notice that could have been avoided or mitigated by Contractor. This Agreement is eligible for [REDACTED] renewal option(s) with a term of [REDACTED] year.
3. **Compensation:** Contractor shall be paid for the services, as set forth in **Exhibit A**, attached and incorporated for all purposes. In no event shall the total compensation exceed \$ [REDACTED] during the term of this Agreement. The City shall pay Contractor in accordance with the Texas Government Code 2251. Contractor must submit invoices for all services, which invoices must include dates of service and details of services provided. Payment for delivery of services rendered shall not be unreasonably withheld or delayed. If the City disapproves any amount submitted for payment by Contractor, the City shall give Contractor specific reasons for disapproval in writing. Upon resolution of any disputed charges, Contractor shall submit an amended invoice covering any remaining charges to the City.
4. **Insurance:** The Contractor [REDACTED] is required/[REDACTED] is not required to maintain insurance through the term of this Agreement.

If required by the City, Contractor shall maintain Comprehensive General Liability insurance coverage of \$1,000,000 per occurrence or medical malpractice insurance (whichever applies) throughout the entire term of the Agreement. If at any point during the Agreement, Contractor will enter City property, Contractor shall also maintain the following insurance: (i) Worker's Compensation coverage with statutory limits for the State of Texas, including Employers Liability coverage of \$500,000 per accident; (ii) Commercial Automobile Liability coverage of \$1,000,000 Combined Single Limit; (iii) for engineers and architects only: Professional Liability coverage of \$5,000,000 per occurrence; and (iv) for builders only: Builder's Risk coverage in the amount of the construction cost, including protection against named windstorm and flood. All policies must contain a waiver of subrogation against City. Comprehensive General Liability and Commercial Automobile Liability policies must name the City as Additional Insured. Contractor shall pay all insurance deductibles and



deductibles must not exceed \$10,000 unless approved in advance by City. Contractor shall provide City Certificates of Insurance evidencing these insurance requirements prior to the start of work.

5. **Independent Contractor:** Contractor is an independent contractor and is not an employee, partner, joint venture, or agent of the City. Contractor understands and agrees that he/she will not be entitled to any benefits generally available to City of League City employees. Contractor shall be responsible for all expenses necessary to carry out the services under this Agreement, and shall not be reimbursed by the City for such expenses except as otherwise provided in this Agreement.
6. **Intellectual Property:** This Agreement shall be an Agreement for services and the parties intend and consider any work created as a result of this Agreement, including any and all documentation, images, products or results, to be a work for hire under federal copyright law. Ownership of the work shall belong to and remain the exclusive property of the City. The work may be edited at any time within the City's discretion. If the work would not be considered a work-for-hire under applicable law, Contractor hereby assigns, transfers, and conveys any and all rights, title and interest to City of League City, including without limitation all copyrights, patents, rights of reproduction, rights to ownership, and right to secure registrations, renewals, reissues and extensions thereof. As the sole copyright holder of the work, the City maintains and asserts the rights to use, reproduce, make derivative works from, and/or edit the Work in any form of medium, expression or technology now known or hereafter developed, at any time within the City's discretion. Contractor shall not sell, disclose or obtain any other compensation for the services provided herein. If the work is one to which the provisions of 17 U.S.C. § 106A apply, the Contractor hereby waives and appoints the City to assert on the Contractor's behalf the Contractor's moral rights or any equivalent rights regarding the form or extent of any alteration to the work (including, without limitation, removal or destruction) or the making of any derivative works based on the Work, including, without limitation, photographs, drawings or other visual reproductions of the work, in any medium, for the City's purposes.
7. **Confidentiality:** During the course of the work and/or services to be provided under this Agreement, Contractor may come in contact with confidential information of the City. Contractor agrees to treat as confidential the information or knowledge that becomes known to Contractor during performance of this Agreement and not to use, copy, or disclose such information to any third party unless authorized in writing by the City. This provision does not restrict the disclosure of any information that is required to be disclosed under applicable law. Contractor shall promptly notify the City of any misuse or unauthorized disclosure of its confidential information and upon expiration of this Agreement shall return to the City all confidential information in Contractor's possession or control. Contractor shall further comply with all information security policies of the City that may apply and shall not make any press releases, public statements or advertisement referring to the services provided under this Agreement or the engagement of Contractor without the prior written approval of the City.
8. **Warranties and Representations:** Contractor warrants and agrees that Contractor shall perform the Services and conduct all operations in conformity with all applicable federal, state, and local laws, rules, regulations, and ordinances. For any Service performed on premises owned or controlled by the City, Contractor warrants and agrees that Contractor will perform the Services in compliance with all City Rules, including but not limited to, prohibitions related to tobacco use, alcohol, and other drugs.
9. **Licenses/Certifications:** Contractor represents and warrants that it will obtain and maintain in effect, and pay the cost of all licenses, permits or certifications that may be necessary for Contractor's performance of this Agreement. If Contractor is a business entity, Contractor warrants, represents, covenants, and agrees that it is duly organized, validly existing and in good standing under the laws of the state of its incorporation; and is duly authorized and in good standing to conduct



business in the State of Texas, that it has all necessary power and has received all necessary approvals to execute and deliver the Agreement and is authorized to execute this Agreement according to its terms on behalf of Contractor.

10. **Performance/Qualifications:** Contractor agrees and represents that Contractor has the personnel, experience, and knowledge necessary to qualify Contractor for the particular duties to be performed under this Agreement. Contractor warrants that all services performed under this Agreement shall be performed consistent with generally prevailing professional or industry standards.
11. **Conflict of Interest:** Contractor warrants, represents, and agrees that Contractor presently has no interest and shall not acquire any interest, direct or indirect, that would conflict in any manner or degree with Contractor's performance of the Services hereunder. Contractor further warrants and affirms that no relationship or affiliation exists between Contractor and the City that could be construed as a conflict of interest with regard to this Agreement.
12. **INDEMNIFICATION: CONTRACTOR SHALL DEFEND, INDEMNIFY AND HOLD HARMLESS THE CITY , AND EACH OF ITS DIRECTORS, OFFICERS, AGENTS AND EMPLOYEES FROM AND AGAINST ALL CLAIMS, ACTIONS, SUITS, DEMANDS, PROCEEDINGS, COSTS, DAMAGES AND LIABILITIES, INCLUDING WITHOUT LIMITATION ATTORNEYS' FEES AND REASONABLE LITIGATION COSTS, ARISING OUT OF, CONNECTED WITH, OR RESULTING FROM ANY ACTS OR OMISSIONS OF CONTRACTOR OR ANY AGENT, EMPLOYEE, SUBCONTRACTOR, OR SUPPLIER OF CONTRACTOR IN THE EXECUTION OR PERFORMANCE OF THIS CONTRACT, TO THE EXTENT THE CLAIM ARISES FROM NEGLIGENCE, WILLFUL ACT, BREACH OF CONTRACT OR VIOLATION OF LAW.**
13. **Force Majeure:** Neither the City nor Contractor shall be liable for any delay in the performance of this Agreement, nor for any other breach, nor for any loss or damage arising from uncontrollable forces such as fire, theft, storm, war, or any other force majeure that could not have been reasonably avoided by exercise of due diligence.
14. **Notices:** Any notice given under this contract by either party to the other may be affected either by personal delivery in writing or by mail, registered or certified postage prepaid with return receipt requested. Mailed notices shall be addressed to the addresses of the parties as they appear in the contract. Notices delivered personally shall be deemed communicated at the time of actual receipt. Mailed notice shall be deemed communicated three (3) days after mailing.
15. **Texas Family Code Child Support Certification:** Pursuant to Section 231.006, *Texas Family Code*, Contractor certifies that it is not ineligible to receive the award of or payments under the Agreement and acknowledges that the Agreement may be terminated, and payment may be withheld if this certification is inaccurate.
16. **State Auditor:** Contractor understands that acceptance of funds under the Agreement constitutes acceptance of the authority of the Texas State Auditor's Office, or any successor agency (collectively, "Auditor"), to conduct an audit or investigation in connection with those funds. Contractor agrees to cooperate with the Auditor in the conduct of the audit or investigation, including without limitation providing all records requested. Contractor will include this provision in all contracts with permitted subcontractors.





17. **Jurisdiction:** Any disputes under this Agreement shall be brought in a court of competent jurisdiction in Galveston, Texas and governed by Texas law.
18. **Alternative Dispute Resolution:** To the extent that Chapter 2260, Texas Government Code, is applicable to this Contract and is not preempted by other applicable law, the dispute resolution process provided for in Chapter 2260 and the related rules adopted by the Texas Attorney General Pursuant to Chapter 2260, shall be used by the City and the Contractor to attempt to resolve any claim for breach of contract made by Contractor that cannot be resolved in the ordinary course of
19. business. The Director of Finance of the City shall examine Contractor's claim and any counterclaim and negotiate with Contractor in an effort to resolve such claims. The parties hereto specifically agree that (i) neither the occurrence of an event giving rise to a breach of contract claim nor the pendency of a claim constitute grounds for the suspension of performance by Contractor, (ii) neither the issuance of this Contract by the City nor any other conduct, action or inaction of any representative of the City relating to this contract constitutes or is intended to constitute a waiver of the City's or the state's sovereign immunity to suit; and (iii) the City has not waived its right to seek redress in the courts.
20. **Entire Agreement:** This Agreement contains the entire Agreement between the parties and supersedes all prior agreements, arrangements, and understanding, oral or written between the parties relating to this Agreement. This Agreement may not be modified except by mutual written agreement of the parties executed subsequent to this Agreement.
21. **Eligibility to Receive Payment:** Contractor certifies that, as a matter of State law, it is not ineligible to receive the Agreement and payments pursuant to the Agreement and acknowledges that the Agreement may be terminated, and payment withheld if this representation is inaccurate.
22. **Payment of Debt/Delinquency to State:** Contractor certifies that it is not indebted to the City of League City and is current on all taxes owed to the City of League City. Contractor agrees that any payments owing to Contractor under the Agreement may be applied directly toward any debt or delinquency that Contractor owes the City of League City regardless of when it arises, until such debt or delinquency is paid in full.
23. **Products and Materials Produced in Texas:** If Contractor will provide services under the Agreement, Contractor covenants and agrees that in performing its duties and obligations under the Agreement, it will purchase products and materials produced in Texas when such products and materials are available at a price and delivery time comparable to products and materials produced outside of Texas.
24. **Risk of Loss:** If applicable, all work performed by Contractor pursuant to the Agreement will be at Contractor's exclusive risk until final and complete acceptance of the work by City. In the case of any loss or damage to the work prior to City's acceptance, such loss or damage will be Contractor's responsibility.
25. **Publicity:** Contractor shall not use City's name, logo or likeness in any press release, marketing materials or other public announcement without receiving City's prior written approval.
26. **Legal Construction/Severability:** In the event that any one or more of the provisions contained in this contract shall for any reason be held to be invalid, illegal or unenforceable in any respect, such invalidity, illegality or unenforceability shall not affect any other provision, and this contract shall be construed as if such invalid, illegal or unenforceable provisions had never been contained in it. To this end, the provisions of this contract are declared to be severable. The Parties may mutually agree to renegotiate the contract to cure such illegality/invalidity or unconstitutionality if such may be reasonably accomplished.



27. **Limitations:** The Parties are aware that there are constitutional and statutory limitations on the authority of City to enter into certain terms and conditions of the Agreement, including, but not limited to, those terms and conditions relating to liens on City's property; disclaimers and limitations of warranties; disclaimers and limitations of liability for damages; waivers, disclaimers and limitations of legal rights, remedies, requirements and processes; limitations of periods to bring legal action; granting control of litigation or settlement to another party; liability for acts or omissions of third parties; payment of attorneys' fees; dispute resolution; indemnities; and confidentiality (collectively, the "Limitations"), and terms and conditions
28. related to the Limitations will not be binding on City except to the extent authorized by the laws and Constitution of the State of Texas.
29. **Sovereign Immunity:** Except as otherwise provided by Texas law, neither the execution of the Agreement by City nor any other conduct, action or inaction of any City representative relating to the Agreement is a waiver of sovereign immunity by City.
30. **Authority:** Contractor warrants and represents that Contractor has full power and authority to enter into and perform this Agreement and to make the grant of rights contained herein. The person signing on behalf of the City represents that he/she has authority to sign this Agreement on behalf of City.
31. **Non-Waiver:** No covenant or condition of this Agreement may be waived except by written consent of the waiving party. Forbearance or indulgence by one party in any regard whatsoever shall not constitute a waiver of the covenant or condition to be performed by the other party.
32. **Prohibition on Boycotting Israel:** Pursuant to Section 2270.002, Texas Government Code, by executing this Agreement Contractor verifies that Contractor: (1) does not boycott Israel; and (2) will not boycott Israel during the term of this Agreement.
33. **Prohibition Against Business with Iran, Sudan or Foreign Terrorists Organizations:** Contractor warrants, covenants, and represents that Contractor is not engaged in business with Iran, Sudan, or any company identified on the list referenced in Section 2252.152, Texas Government Code

*(Remainder of page intentionally left blank -signature block on next page)*



Executed this \_\_\_\_\_ day of \_\_\_\_\_, \_\_\_\_\_.

\_\_\_\_\_ - “Contractor”

\_\_\_\_\_  
(Type Name and Position)

CITY OF LEAGUE CITY – “City”

\_\_\_\_\_  
John Baumgartner, City Manager

**Attest:**

\_\_\_\_\_  
Diana Stapp, City Secretary

**Approved as to Form:**

\_\_\_\_\_  
Office of the City Attorney

*Note: Modification of this Form requires approval by the Office of the City Attorney.*





## **Exhibit A**

### **Scope of Services/Description of Products**

(Exhibit A has a total of [Click or tap here to enter text.](#) page(s), which includes this page)

[Click or tap here to enter text.](#)



**Proposal for**  
**League City Texas**  
**All-Hazards Response Boat**  
**RFP #20-Fire-001 (R)**



**Technical Proposal**



## Table of Contents

1.0	Executive Summary.....	4
1.1	Customer Need.....	4
1.2	Offered Outcome. ....	4
1.3	Solution. ....	4
2.0	Capabilities.....	5
2.1	About Silver Ships. ....	5
2.2	Qualifications. ....	5
2.1.1	Relevant Experience.....	5
2.1.2	Financially Sound.....	5
2.1.3	Technically Capable.....	5
2.3	Silver Ships' Mission and Values. ....	6
3.0	Production Approach .....	7
3.1	Program Management Team (PMT) Leadership. ....	7
3.2	Design and Engineering Overview .....	8
3.2.1	Detailed Design Initiation Point / Design Maturity. ....	8
3.3	Major Design and Engineering Effort. ....	8
3.3.1	Stage 1: .....	8
3.3.2	Stage 2 .....	8
3.4	Design / Engineering Capabilities and Manpower. ....	9
3.5	Production .....	9
3.5.1	Facility Overview.....	9
3.5.2	Construction Approach.....	9
3.6	Quality Assurance Process .....	10
3.6.1	Quality Objectives. ....	10
3.6.2	Quality Assurance Approach.....	11
3.6.3	Quality Assurance Resources.....	11
3.6.4	Quality Assurance Checkpoints. ....	11
4.0	Specifications .....	13

**Attachments**

Attachment A1 – General Arrangement Drawings for Endeavor 30  
Attachment A2 – General Arrangement Drawings for Endeavor 34  
Attachment B – References and Past Performance  
Attachment C – Warranty

## 1.0 Executive Summary

**1.1 Customer Need.** Silver Ships understands that the intent of this solicitation is to obtain a top of the line, heavy-duty, ruggedized commercial aluminum fire and rescue vessel capable of operating primarily in the waters, and adjacent waterways, of League City, TX. As evidenced by other vessels provided to departments on similar waterways, Silver Ships design provides for the additional stability and seakeeping to support operations in extremely rough conditions. All of our vessels are constructed to meet ISO 12217 Category B stability and all ABYC standards.

**1.2 Offered Outcome.** Silver Ships' proposed design and integrated systems for the vessel, consisting of the boat, its propulsion systems and outfitting equipment, will enable the vessel and its crew to safely and successfully complete their mission. The general layout for the boat was chosen to insure clear communication during and throughout operational deployment which will maximize situation awareness and crew protection.

Starting with the requirements, to the initial layout, to the final design, our focus has been on the crew's ability to interface with their boat and how the boat would impact their ability to carry out various operations. Silver Ships continues to evaluate systems to deliver best approach/cost solution utilizing our systematic approach to production, which continues to guide our process of evaluating best cost, practice and design. This ensures that the vessel will be mission-ready and mission-capable.

Our boats range in size from 21 to 65 in length, are built to American Boat & Yacht Council (ABYC) Standards, can be built to U.S. Coast Guard Regulations for Inspected Vessels, if required, and are currently operating on a worldwide basis. Silver Ships product line s include all-welded aluminum boats used for the following applications: military, police, fire, rescue, EMS, patrol, utility, survey, landing craft, line handling, oil spill services, water sampling, water taxis, workboats, pilot boats and passenger boats. Silver Ships also offers a complete Refurbishment Program for all makes and models of aluminum workboats.

**1.3 Solution.** The proposed solution from Silver Ships is our Endeavor Series monohull fire boat. We have provided two options based on the enclosed specifications. Endeavor Series vessels have been designed for the demanding requirements associated with fire, rescue and dive operations. Over the past 30 years, the Explorer Series of boats has been used in many applications, from fire and rescue service to many patrol and research missions.

## **2.0 Capabilities**

**2.1 About Silver Ships.** Founded in 1985 by Mike McCarty, Silver Ships' vision is to provide customers with boats designed, built, outfitted and best-suited to meet their operational needs while offering the maximum in crew safety and outstanding performance.

Throughout its history, Silver Ships, a family owned business has continued to fulfill its Mission Statement by producing high-quality aluminum boats for military, federal, state and municipal government as well as commercial applications through collaboration with highly skilled design, engineering and production resources. With corporate headquarters located in Theodore, Alabama, Silver Ships' production facilities are situated on a 16-acre plant site and utilizes state-of-the-art boatbuilding equipment.



**2.2 Qualifications.** We have long standing relationships in direct support of US government and DoD customers including Navy Special Warfare, Marine Corps Special Operations and the US Army Corps of Engineers. The rigorous demands of ensuring quality vessels are built to the strictest standards have a positive impact on all craft designed and built at Silver Ships.

**2.1.1 Relevant Experience.** In addition to our Federal and military customers, Silver Ships has a vast array of State, Local and Municipal customers including law enforcement, fire / rescue first responders, commercial vessel assist and commercial survey operators. Silver Ships relevant experience couples both our 30-year history and lessons learned with recent knowledge enhancing our overall capability. Detailed experience, references and past performance are provided in our past performance attachment to this technical volume.

**2.1.2 Financially Sound.** Silver Ships has a strong financial position with significant resources on hand to successfully bring all projects to completion. Our fully integrated production and resource review process relies on key performance indicators to show effective application of resources to projects. With zero debt and all facilities and equipment wholly owned by Silver Ships, we do not rely on outside capital to finance projects. This strong financial position greatly reduces risk for our customers.

Silver Ships' Dun and Bradstreet rating is among the highest in our industry indicating solid financial standing.

### **2.1.3 Technically Capable.**

#### **2.1.3.1 Design.**

Silver Ships specializes in the design, manufacture and outfitting of custom all welded aluminum craft optimized for both performance and durability. All our craft are CAD designed at the outset. Upon completion of final design and approval from the customer, Silver Ships develops CAD lofted cut packages which are provided to our router shop to generate NC cut components using our C.R. Onsrud state of the

art CNC router. Our hull structural members have interlocking, NC cut, notches to ensure proper alignment and structural integrity.

#### **2.1.3.2 Quality Assurance / Quality Management.**

Silver Ships has an established Quality Management System that is integrated from top management through the production level. Silver Ship's Quality Management System requirements are applicable to commercial, law enforcement and military boats.

**2.3 Silver Ships' Mission and Values.** Silver Ships is committed to helping our customers meet their goals and achieve their missions. In line with our commitment, our core values are the principles that define our behavior. They shape our strategy and set our priorities. Internally, they guide our culture, and externally, they are fundamental to our success. Our vision has always been to provide customers with a boat designed, built and outfitted to best suit their operational needs.

**Integrity** – We commit to the highest ethical standards in all that we do. We conduct our activities honestly and ethically. We earn our reputation as a highly ethical company through the integrity of our decisions and actions.

**Respect** – We encourage diversity of culture, background, experience, thoughts and ideas. We demonstrate respect for our colleagues and customers through professionalism in our words and actions. We benefit as a team from our differences, where diversity contributes to innovative ideas and drives better results for our customers.

**Trust** – We follow through on commitments to our teammates and customers. We earn our customers' trust by providing quality service and delivering on our promises, striving for continuous improvement. We maintain open and honest communications with our employees, partners and customers.

**Teamwork** – We are “one team, one fight,” working together to achieve our goals. We use resources, best practices and capabilities across our company to meet our customers' requirements.

**Mission** – We make business decisions that are first and foremost based on achieving customer mission success. We provide services and solutions that are relevant, innovative, timely and affordable—consistently exceeding customer expectations. We are proud to do meaningful work and help our customers achieve their goals in service to their constituents.

### 3.0 Production Approach

#### 3.1 Program Management Team (PMT) Leadership.

Our management process is founded on experienced leadership and supported through a PMT organization for the oversight and execution of support activities. Our PMT is comprised of a government business development and contract management team with a contract lead for each award. The contract management team is supported by our Technical Lead / Production supervisor and our contract support and administration staff.

**Table 1. Silver Ships PMT Roles, Responsibilities, Authority**

Role	Responsibilities	Authority	Coordinates with
<b>Silver Ships Contract Lead</b>	<ul style="list-style-type: none"> <li>• Total Contract Management</li> </ul>	<ul style="list-style-type: none"> <li>• Commit Silver Ships Resources</li> </ul>	<ul style="list-style-type: none"> <li>• Contracting Officer</li> <li>• Government POCs</li> <li>• Technical Leads</li> <li>• Silver Ships Admin/Contract Support Staff</li> </ul>
<b>Engineering and Technical Lead</b>	<ul style="list-style-type: none"> <li>• Vessel design</li> <li>• CAD design and production drawings</li> <li>• Stability analysis</li> <li>• Hull form design</li> </ul>	<ul style="list-style-type: none"> <li>• Technical design approval</li> </ul>	<ul style="list-style-type: none"> <li>• Silver Ships Contract Lead</li> <li>• Government Technical POC</li> <li>• Production Supervisor</li> </ul>
<b>Production Supervisor</b>	<ul style="list-style-type: none"> <li>• Team Performance</li> <li>• Daily Task Execution</li> <li>• Task Technical, Quality, and Schedule Performance</li> <li>• Teammate Performance</li> </ul>	<ul style="list-style-type: none"> <li>• Technical execution of Task award</li> <li>• Commitment of personnel and material assets to Task</li> </ul>	<ul style="list-style-type: none"> <li>• Silver Ships Contract Lead</li> <li>• Government POC</li> </ul>
<b>Silver Ships Administrative and Contract Support Staff</b>	<ul style="list-style-type: none"> <li>• Invoicing Compliance</li> <li>• Administrative Support</li> </ul>	<ul style="list-style-type: none"> <li>• Invoice Approval and Submission</li> </ul>	<ul style="list-style-type: none"> <li>• Silver Ships Contract Lead</li> <li>• Government Accounting Staff</li> </ul>



### **3.2 Design and Engineering Overview**

Silver Ships has provided our design and engineering approach for boat design and construction below. This overview demonstrates that our approach meets the design requirements by providing descriptive narratives to define the processes and resources that will be used to complete the detail design and construction efforts. These detailed design efforts begin prior to proposal development with proposal design efforts focused on the validation that the proposed craft will meet the technical requirements of the solicitation. This can include stability, structure, weight estimates, speed and power range calculations. The process detailed below is focused on production design which incorporates any design changes or clarifications based on customer input after contract award. All changes are sent to the customer for approval before production begins.

#### **3.2.1 Detailed Design Initiation Point / Design Maturity.**

Silver Ship's detailed design initiation point begins with a thorough review of all customer specifications and a comparison of requirements against similar past projects. This specification review includes a deep dive analysis to determine the likely operational requirement driving the specification. This analysis provides context for the design team to begin initial estimation on hull form and general arrangements.

### **3.3 Major Design and Engineering Effort.**

#### **3.3.1 Stage 1:**

The goal of Stage 1 is to finalize the 3D model with all major systems, sub-systems and outfitting included. This is achieved through obtaining customer input during design reviews at major junctures in the process. The culmination of this stage is the Preliminary Design Review. In addition to presentation of the design model to the customer, other outputs of Stage 1 include:

- General Arrangement Drawings
- Hull Form Review, Structural and Stability Calculations
- Auxiliary Systems Design and Calculations (e.g. HVAC, etc.)
- Speed-Power calculations, Range Calculations, and Endurance Calculations
- Cabin / Workstation Layout
  - Cabin outfitting selections and supporting test results (e.g. Shock Mitigating Seats, etc.)

Stage 1 further includes the creation of first drafts of initial Building Plans, and to generate essential documents that will be required to validate production planning. This includes finalizing and updating drawings from design inception.

#### **3.3.2. Stage 2**

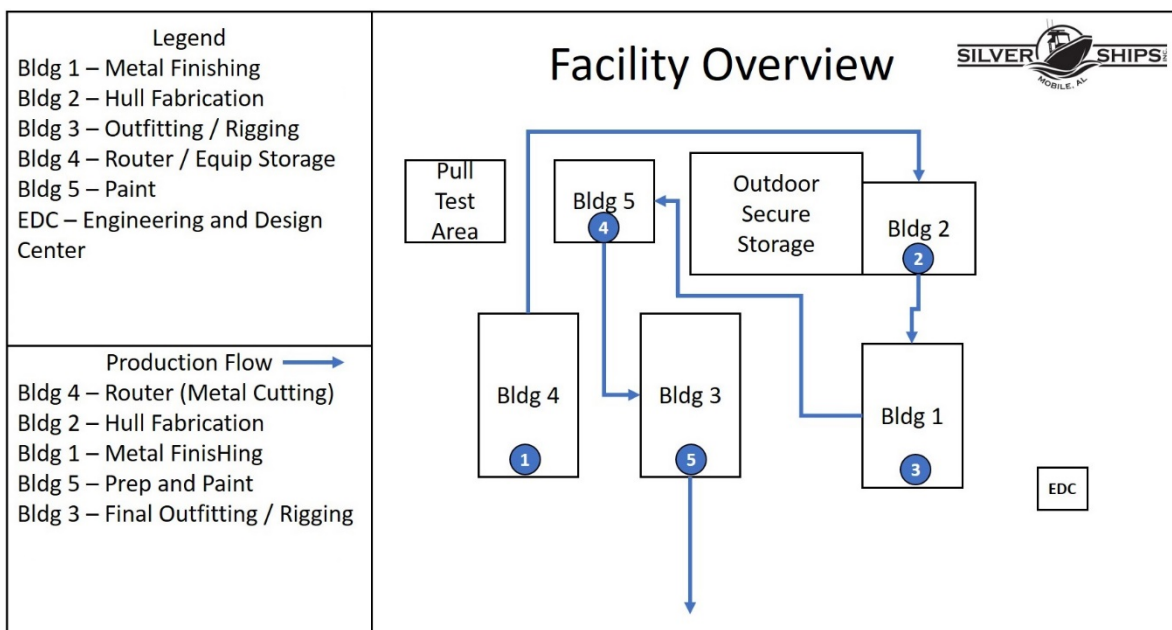
The goal of Stage 2 is the validation and finalization of the outputs of Stage 1; including any updates and revisions based on the Preliminary Design Review. At the completion of Stage 2, all documentation and testing will be completed in preparation for a Critical Design Review with the customer. Upon completion of Stage 2, Silver Ships will prepare for the start of production.

### 3.4 Design / Engineering Capabilities and Manpower.

Silver Ships utilizes primarily our in-house design and engineering center personnel. They include our Lead Naval Architect, CAD designers, 3D modelers and electrical engineering. Our lead architect has experience across the range of shipbuilding to include small and large vessels in the commercial and recreational sector as well as more recent experience working on programs in support of larger US Navy ships.

### 3.5 Production

**3.5.1 Facility Overview.** Figure 2 below provides an overall scale layout of the Silver Ships manufacturing facilities with the nominal production flow depicted. Figure 3 provides detailed layouts of the primary facilities with interior areas labeled.



*Scale Overall Layout and Production Flow*

**3.5.2 Construction Approach.** Silver Ships construction approach begins with the completion of the design phase and the development of initial work instructions by our planning team. These work instructions are developed in a coordinated effort between our design team for production drawings, our production team and our planning team. Upon completion, the work instructions are delivered to the production supervisors for implementation.

Following completion and approval of the design, in parallel with the development of work instructions, our design team extracts the individual metal components from the 3D model of the craft in order to create cut packages. These CAD lofted cut packages are optimized to minimize metal waste and support a smooth flow of metal parts in sequence to the welding floor. All Silver Ships aluminum plating and structure are cut using a state of the art CR Onsrud CNC router.

### **3.5.2.1 Key Production Milestones.**

#### Hull construction

- Assemble and secure the internal structure inverted on a jig purpose built for that vessel
- Structure alignment check utilizing laser survey equipment
- Hull and side plating are placed and welded

Following the completion of the hull, the vessel is flipped and moved into the finish metal shop for completion of all internal metal components, deck and superstructure.

- Quality Control spot checks are continuous
- Primarily utilizing Metal Inert Gas (MIG) welding in structure and fabrication
- Tungsten Inert Gas (TIG) welding for special applications

#### After completion of the welding fabrication of each vessel

- Vessel is weighed for comparison against the estimated weight and the weight control plan is updated
- Vessel is moved to prep and paint for in house media blasting and any painting as required

#### Arrival in the outfitting facility

- Boat outfit equipment is inventoried before outfitting begins
- Continuous monitoring of rigging activities against the planned schedule

Trials are conducted by launching the vessel at one of our pre-coordinated water access points based on vessel size. Primary sea trials are conducted in Mobile Bay, AL and out into the Gulf of Mexico if required.

## **3.6 Quality Assurance Process**

Quality Assurance Process and Approach. The Silver Ships Program Manager is ultimately responsible for supervising and implementing all aspects of our quality management and assurance for all aspects of the production approach. Our PM is responsible for analyzing customer feedback and trends, scheduling and overseeing audits and management checks, and determining and leading quality process improvement projects as determined by the contract and the Government. He is supported by our Quality Control department.

**3.6.1 Quality Objectives.** Quality must be integrated at the beginning of a project and not incorporated into an activity after defects occur. Evaluation of service and deliverable quality is not a one-time occurrence. It begins prior to contract start and continues throughout the period of performance. All personnel who manage, perform, or verify work relating to the manufacture of our vessels share the responsibility of the products' quality. The objectives established for the quality assurance plan:

- Defining, setting, meeting, or exceeding performance standards.

- Involving all personnel in quality management and performance monitoring functions; leveraging similar task skills to cross-check for quality.
- Creating a team-wide mentality that encourages and allows all personnel in the organization to participate in identifying and evaluating quality problems and discrepancies, and recommending solutions.
- Enhancing or developing new QC processes in all applicable tasks.
- Rapidly detecting existing and anticipating potential deficiencies.
- Proactively resolving problems.
- Implementing systemic process improvements as opportunities are identified.

**3.6.2 Quality Assurance Approach.** Focusing on specific processes such as management responsibility; resource management; product realization; and measurement, analysis, and improvement is necessary for a successful quality assurance program. These areas of focus allow us to consistently take customer requirements and transform those requirements into products and services, resulting in satisfied customers.

Our quality assurance approach focuses on four areas:

- **Quality Planning.** Identifying which quality standards, procedures, and resources are relevant to the project.
- **Quality Assurance.** Evaluating overall project performance on a regular basis to provide confidence that all quality requirements are fulfilled to satisfy the relevant quality standards. Qualified individuals will inspect work at quality assurance checkpoints defined in the Integrated Master Schedule and documented in the detailed work instructions.
- **QC.** Fulfilling quality requirements by monitoring specific product deliverable results to determine if they comply with relevant quality standards and identifying ways to eliminate causes of unsatisfactory performance. The PM conducts the final review, ensuring all project requirements are met prior to final release.
- **Continuous Quality Improvement.** Taking action to increase the effectiveness and efficiency of our quality assurance approach to provide value-added benefits.

**3.6.3 Quality Assurance Resources.** Quality Assurance Resources. Our Quality Control resources include personnel, onsite test equipment, certified inspectors and third-party certification when required. QA checkpoints are established at logical points in production and must be passed before the boat can proceed. Each of these checkpoints represents a node on the critical path of any vessel in manufacturing. QA failures at any point result in an immediate root-cause analysis to trace the source of the error. Corrective action is taken on that vessel and the cause of the error is addressed in production to ensure no recurrence.

**3.6.4 Quality Assurance Checkpoints.** The below production QA checkpoints are inherent in every project. Additional checkpoints are added as required for special application vessels.

- QA Checkpoint Pre-Hull Plating
- QA Checkpoint Inner Hull
- QA Checkpoint Outer Hull
- QA Checkpoint Fuel Tank Test
- QA Checkpoint Fitting Load Test and Scale Weight
- QA Checkpoint Paint
- QA Checkpoint Waterjet Installation
- QA Checkpoint Pre-Trial Inspection

#### **4.0 Specifications**

The technical specifications have been addressed, as directed, in the provided table below. Additional information is available as required to clarify and / or modify these specifications. Of particular note is the fact that as a custom aluminum workboat manufacturer, Silver Ships' engineering and design review process incorporates a significant amount of customer input during the final design for every vessel to ensure that the configuration of your boat is tailored to your specific department's approach and needs.

<b><u>Scope of Work:</u></b>	<b><u>Silver Ships Response</u></b>
The City of League City seeks competitive bids on an all-hazards response boat. Aside from the specifications please include in your statement of qualifications:	
· Information about Quality Assurance Process	Provided in Section 3.6 above.
· Warrant Information	Provided in Attachment C.
· Capabilities	Provided in Section 2.0 above.
· Relevant Experience (To include pictures of other relevant projects)	Provided in Attachment B.
· General Arrangement and Drawings	Provided in Attachments A1 and A2.
· Timeline of build from contract award to delivery	Silver Ships proposed timeline is 300 calendar days from contract award to delivery. This includes a 45 day pre-construction design effort. This would be a delivery date of 12 August 2020; well before the required delivery of January 2021.
· Qualifications	Our technical proposal taken in total indicates our qualifications as a custom aluminum fire boat manufacturer. In addition to the vessels depicted in Attachment B, we currently have several fire boats in production right now.
· Delivery no later than January 2021	See above.
All vendors shall be within 500 miles of 555 W. Walker, League City, TX 77573	Fully compliant. Silver Ships facility is 468 miles from 555 W. Walker, League City, TX 77573.
<b>A. GENERAL SPECIFICATIONS:</b>	
1. Hull Length: 30' minimum and 34' maximum (does not include outboard engines, engine bracket, engine guard, or rub rails)	Fully compliant. Our proposed vessel is 30 length overall as defined in the specification. An alternate proposed vessel is also provided that is 34 length overall.
2. Beam: 10 feet minimum (does not include rub rails)	Fully compliant.
3. Overall height not to exceed 136" to highest fixed point while on trailer and attached to a tow vehicle.	Fully compliant.
4. Draft should not exceed 24 inches from the keel to the waterline.	Fully compliant.
5. Person and cargo capacity 4,000 lbs.	Fully compliant.

6. Boat weight 15,200lbs approx.	Fully compliant.
7. Trailer weight 2,900lbs approx.	Fully compliant.
8. Combined boat and trailer weight 18,100 lbs. approx.	Fully compliant.
9. Fire pump rated at 800 - 1000 GPM at 150psi.	Fully compliant.
10. All outfitting to be marine grade	Fully compliant.
<b>B. HULL DESIGN &amp; OUTFITTING:</b>	
1. Hull shall be a mono-hull style modified "V" with dead rise to be determined by the builder to meet draft and performance requirements.	Fully compliant.
2. The boat shall have a bow door sized for personnel only (width should accommodate a standard stokes basket approximately 25"). The door shall have the ability to be latched in closed position.	Fully compliant.
3. Two 34" clear opening dive doors, one on the port side and one on the starboard side	Fully compliant.
4. Aluminum hull with rubber rub rail with swimmers grab rails just above the waterline on port and starboard sides of vessel.	Fully compliant.
5. All decks shall be designed to be self-bailing and provide sufficient water egress.	Fully compliant.
6. Deck shall be the same level forward and aft to include the ability to walk around the pilot house on the deck.	Fully compliant.
7. Sacrificial anodes shall be provided to protect against galvanic corrosion.	Fully compliant.
8. The pump compartment shall be designed to facilitate easy access for pump, engine and mechanical maintenance.	Fully compliant.
9. A 3/4" aluminum double pad eye will be incorporated into the keel.	Fully compliant.
10. 1 1/2" pipe safety railings are installed 6" above gunnel from dive doors, forward 72". Final hand rail designs will be approved by the customer prior to the start of manufacture.	Fully compliant.
11. Eight (8) 10" welded aluminum cleats.	Fully compliant.
12. Bottom plating .250" 5086	Fully compliant.
13. Side plating .190" 5086	Fully compliant.



14. Deck plating .124" 5086	Fully compliant.
15. Deck structure and component material are aluminum, they consist of 5086 aluminum alloy with thicknesses of .190", .250", and .375", and are fully welded to the hull and all deck height transverse bulkheads and longitudinal girders to contribute to the strength of the hull.	Fully compliant.
16. 3" Duramax D shaped rub rail along the full length of the boat at the gunnel height. With 5 diagonal D fenders installed both port and stbd.	Fully compliant.
17. Minimum of 2000GPH automatic bilge pumps. The number of pumps and locations to be determined by the vendor in accordance with applicable design standards and best practices.	Fully compliant.
18. One (1) T-handle drain plug.	Fully compliant.
19. ABYC approved carbon monoxide detector in cab. Gasoline fume detector in the pump engine compartment.	Fully compliant.
20. Recessed deck tie downs and a water wash down system.	Fully compliant.
<b>C. WELDING:</b>	
1. The hull and superstructure are constructed of marine grade aluminum and MIG and TIG welded throughout.	Fully compliant.
2. All water seams are welded 100% on both sides.	Fully compliant.
3. Longitudinal structural members are stitch welded on opposite sides.	Fully compliant.
4. Hull plating and wends shall meet or exceed all applicable ABYC, ABS, or USCG standards	Fully compliant.
<b>D. FUEL SYSTEM:</b>	
1. 160-gallon fuel tank minimum. Fuel supply for the fire pump is direct piped to the vessel fuel tank. The tank is made of aluminum. The tank is internally baffled to prevent shifting of the fuel load, and to ensure fuel pickup tube remains submerged in fuel. Shall be NFPA compliant.	Fully compliant.
2. Fuel tank is EPA compliant and meets all venting and overflow safety requirements.	Fully compliant.

3. Withdrawal tubes are stainless steel.	Fully compliant.
4. A WEMA fuel sender is attached to a NMEA fluid level interface to supply data to electronic gauges.	Fully compliant.
<b>E. TOWING EQUIPMENT:</b>	
1. Minimum of 2" double pipe motor guard with tow line guides. The guard shall have an integrated stokes basket rack on top of guard.	Fully compliant.
2. Tow post shall be fitted aft on centerline.	Fully compliant.
3. Push knees shall be provided on the forward bow with Duramax rubber D shaped bumpers.	Fully compliant.
4. Scuba bottle storage will be provided forward. Quantity 4. Bottle storage when not in use will need be on spring hinges or equivalent. Final position of scuba bottle storage to be determined during pre-construction.	Fully compliant.
<b>F. PILOT HOUSE</b>	
1. Note: measurements and arrangements are approximate and will be determined by the builder and the department during design prior to the start of manufacture.	Acknowledged. Will comply.
2. The walk around pilot house 9 long by 8' 1" wide, with an interior clearance height of 76".	Fully compliant. Silver Ships understands that the final dimensions will be determined during design review. Note: Two proposed vessels are provided with associated pricing for each based on the walk around requirement. Dimensionally, a 30ft Endeavor requires that personnel walk around the cabin on an enlarged gunwhale, whereas in the 34ft Endeavor, there is sufficient deck space to include sliding side doors. This is reflected in the attached drawings.
3. The pilot house is fully enclosed. Component material is all welded construction of 5086 aluminum alloy of 3/16" thickness.	Fully compliant.

4. The pilot house is equipped with two forward leaning windshields. One sliding and one fixed clamped tempered safety glass window on each side and two fixed clamped windows on aft wall of pilot house. One lockable hinged folding door on the aft face of the house.	Fully compliant.
5. The pilot house will have 4 overhead windows. Two over captain's head and two over passenger head.	Fully compliant.
6. The dash console provides ample room for electronics, throttles, switches, and steering wheel with cable components. Steering wheel to be outfitted with a speed wheel for low speed maneuvers.	Fully compliant.
7. Pilot house will have 2 ventilation/defrost fans to circulate air around windshield and cabin area.	Fully compliant.
8. 110V/220V rooftop unit for heating and A/C.	Fully compliant.
9. Includes marine fire extinguishers meeting or exceeding USCG or ABYC standards.	Fully compliant.
10. Helm station is starboard, overhead radio rack and final helm and console arrangement will be approved by the customer prior to the start of manufacture.	Fully compliant.
11. For proposal purposes, the following grab rails are anticipated. There is a grab rail alongside of the roof gutters on port and starboard sides. Final location and design of grab rails will be approved by the customer prior to the start of manufacture.	Acknowledged. Will comply. Minimal handrails are depicted in the general arrangement drawings. Final placement will be approved by the customer prior to the start of manufacture.
12. There are 2 overhead grab rails running lengthwise in the pilot house ceiling.	Acknowledged. Will comply.
13. There is a grab rail near the console at the pump control station.	Acknowledged. Will comply.
14. There are 2 grab rails on the exterior forward bulkhead of the pilot house.	Acknowledged. Will comply.
15. There are 2 grab rails on the exterior aft bulkhead of the pilot house.	Acknowledged. Will comply.
16. Four 12V red/white LED dome lights installed overhead inside of the cabin.	Fully compliant.

17. Suspension Seat and seat box with storage is provided for operator and navigator	Fully compliant.
18. Horn and compass provided.	Fully compliant.
19. Two additional suspension seats with seat box on starboard aft of the operator.	Fully compliant.
20. One padded bench along interior port wall of pilot house with storage beneath; sized for a stokes litter	Fully compliant.
21. Pilot house fitted with manual folding mast for installation of lighting and electronics.	Fully compliant.
22. All pilot house configuration specifications are anticipated. Final design will be approved by the customer prior to the start of manufacture.	Acknowledged. Will comply.
23. Electric, remote LED spot light installed on pilot house.	Fully compliant.
24. AM/FM radio with a minimum of two speakers in the pilot house	Fully compliant.
<b>G. ELECTRICAL SYSTEM:</b>	
1. The vessels electrical system is 12VDC and 120VAC 60 Hz.	Fully compliant.
2. All electrical cable is marine grade tinned copper wire and labeled for each circuit.	Fully compliant.
3. Cables are routed in wire ways wherever possible. Cables are protected wherever exposed to potential damage.	Fully compliant.
4. Electrical cables are sized in accordance with the American Boat & Yacht Council recommendations.	Fully compliant.
5. All electrical cables are marked in accordance with the markings in electrical drawings.	Fully compliant.
6. All electrical switches are of marine grade and properly insulated.	Fully compliant.
7. The electrical system is grounded. The hull is not used as part of a galvanic feeding loop.	Fully compliant.
8. Wiring for radios, and all electronics are protected with circuit breakers. Additional circuit breakers are provided for future expansion of the electrical system.	Fully compliant.

9. Electrical compartments are provided in the cabin to house the electrical power, circuit protection and control components. Serviceable components are accessible. Power, circuit protection and control components are protected against the following: corrosion, excessive heat, excessive vibration, water spray and EMI and RFI.	Fully compliant.
10. Mounting plates for antenna are on the roof.	Fully compliant.
11. Heavy-duty wiper system.	Fully compliant.
12. Two (2) 12-volt power outlets and two (2) USB charging ports are provided in the dash console.	Fully compliant.
13. All wiring to be labeled at both ends.	Fully compliant.
14. Wiring diagrams and instruction manuals for manufacturer furnished items shall be provided on delivery.	Fully compliant.
<b>H. BATTERIES:</b>	
1. Four marine batteries are installed complete with battery switches.	Fully compliant.
2. Two batteries are installed as the engine starting bank, one is for starting the pump motor and one is a dedicated house battery. A four-position battery distribution panel, located on the console, includes a battery switch for each battery, crossover switches to allow jumping in case of a dead battery, and 3 automatic charging relays that direct the alternator or battery charger to the weaker battery. All battery switches are located on lower panel of console.	Fully compliant.
3. All batteries shall be charged by the engines as well as by shore power.	Fully compliant.
4. All of the batteries are installed in plastic battery trays below a deck hatch outboard of the cabin.	Fully compliant.
<b>I. 120V AC ELECTRICAL:</b>	
1. A 30-amp shore power system installed to supply battery charger.	Fully compliant.
2. Appropriate battery chargers are installed for use with the shore power system above.	Fully compliant.

3. Westerbeke 5 Kw generator (or equivalent) is installed to provide AC power	Fully compliant.
<b>J. 12V DC ELECTRICAL:</b>	
1. Two Blue Seas 6 position distribution panels are installed on the console.	Fully compliant.
2. LED Navigation lights are installed to meet USCG requirements with hinging anchor light mast.	Fully compliant.
3. 12V 2000 GPH bilge pumps are installed with automatic float switch.	Fully compliant.
4. Includes 2 Blue Seas 12v/USB charging ports.	Fully compliant.
5. Additional breaker switches to be added for future addition of lighting.	Fully compliant.
<b>K. PROPULSION:</b>	
1. A minimum of Twin Four Stroke outboards of 300HP or greater with appropriate shaft size as determined by the builder will be provided. These are complete with a fuel management system, dual key management system, dual key switch panel, power trim and tilt, harnesses. Minimum top speed of 38 knots.	Fully compliant. The proposed vessel includes twin 300HP four stroke Suzuki outboard motors.
<b>L. FIRE PUMP:</b>	
1. The fire pump provided must be gasoline fueled, powered by a dedicated engine and capable of producing 800-1000 GPM at 150psi at the pump.	Fully compliant. Two fire pump packages were evaluated for this solicitation. The Darley LS 1000 pump was evaluated with either a 2.4L 4-cylinder marinized engine or a 4.3L 6-cylinder marinized engine. While the 2.4L solution may possibly make 800GPM with a perfectly matched fire monitor, the installation was considered high-risk for failure by the pump manufacturer. Our proposed vessel includes the 4.3L engine and will make 1000GPM as specified.
2. The pump control station is an FRC Pump Boss 200 Pressure/ RPM controller (or equal).	Fully compliant.
3. FRC dash mounted pressure (psi) and flow (gpm) meter.	Fully compliant.
4. Remote control 6" stainless shut off valve between the sea chest and pump with controls on the main console in the pilot house.	Fully compliant.

5. TFT Inline foam inductor with 6-7 ft pickup tube	Fully compliant.
6. TFT Monitor appropriately sized for fire system on front of boat with interchangeable fog nozzle and smooth bore with stacked tips and stream straightener. Location of monitor to be near the bow door however exact location will be determined during pre-construction.	Fully compliant.
7. Two (2) TFT 2.5 male gated NST discharges one 5" TFT LDH discharge terminated with a 5" Storz connection.	Fully compliant.
8. The pump is configured with through-hull suction into a sea chest with a minimum of 6" intake. The sea chest has a screened inlet, and a valve at the sea chest outlet.	Fully compliant.
9. Monitor to be manually operated	Fully compliant.
10. Fresh water flushing port installed just ahead of sea chest valve.	Fully compliant.
11. Fire suppression system is included in pump engine space.	Fully compliant.
<b>M. PAINT AND GRAPHICS:</b>	
1. Deck area and interior/exterior of pilot house are painted with non-skid texture paint.	Fully compliant.
2. Single reflective red stripe around the exterior hull of vessel near the top of the hull.	Fully compliant.
3. Graphics "League City Public Safety" on pilot house along with League City Fire Department patch and League City Fire Marshal's Patch. Vector files of patches will be provided to the vendor. All graphics to be reflective.	Fully compliant.
4. Anti-Foulant Paint (hull) is provided.	Fully compliant.
<b>N. ELECTRONICS:</b>	
1. One (1) Raymarine VHF provided.	Fully compliant.
2. Two (2) Raymarine Axiom Pro 9-inch (or larger) MFD touchscreen with GPS, Chart plotter, side scan, maps and transducers. Real vision 3D all in one sonar.	Fully compliant.
3. Raymarine Radar/radome provided.	Fully compliant.
4. Install one Motorola APX 8500 radio. Radio will be provided by agency.	Fully compliant.



<b>O. EMERGENCY LIGHTING, SIREN, AND WORK LIGHTS:</b>	
1. Whelen Ion trio or equivalent emergency lighting shall be provided. Emergency lighting shall be visible from 360 degrees around the vessel. (Red/Blue/White)	Fully compliant.
2. LED Flood / work lights (4). These lights to be mounted on the pilot house and to illuminate the water around the boat. Also, the rear light to illuminate the deck area.	Fully compliant.
3. Courtesy lights for walkway illumination, red in color.	Fully compliant.
4. Siren / loudhailer with control panel shall be provided.	Fully compliant.
<b>P. TRAILER:</b>	
1. A custom aluminum triple axle bunk trailer complete with electric brakes, spare tire, and tongue jack on trailer.	Fully compliant.
2. Galvanized steel wheels and electric disc brakes.	Fully compliant.
3. An adjustable bow stop and winch stand is provided with a manual 2-speed winch and strap.	Fully compliant.
4. Trailer LED lights are submersible.	Fully compliant.
<b>Q. WARRANTY:</b>	
1. Warranty includes 1 full year limited warranty from bow to stern of vessel.	Fully compliant.
2. 10-year structural warranty on all hull, deck and cabin parts (including fuel tank).	Fully compliant. Silver Ships standard warranty for hull, deck and cabin parts including the fuel tank is 15 years at no additional cost.
3. All OEM equipment warranties passed through to customer.	Fully compliant.
<b>ALTERNATES (Priced separately):</b>	
1. Furuno Solid Sate Doppler Radar Model DRS4D-NXT or equivalent	Alternate specifications can be provided for additional cost if deemed in the best interest of the department. The alternate items are not included in the proposed price except as indicated below.
2. Multi-function display: Furuno TZTL15F (15.6" display) or equivalent	Not included proposed price.
3. Furuno Class B AIS FA-50 or equivalent	Not included proposed price.



4. 2 – Handheld thermal imager FLIR OS 640	Not included proposed price.
5. FLIR M 324CS Infrared camera	Not included proposed price.
6. Minimum of 2 days of onsite training in League City, TX for minimum of 10 personnel	Not included proposed price.
7. Jack Plates for all propulsion engines	Not included proposed price.
8. 2 sliding doors on pilot house one next to the captain seat (starboard) and one next to the navigator seat (port)	Not included proposed price.
9. Two (2) Raymarine Axiom Pro 12 MFD touchscreen with GPS, Chart plotter, side scan, maps and transducers. Real vision 3D all in one sonar.	Included in proposed price for 34ft Endeavor.
10. One additional electric LED remote spot light installed on pilot house	Not included proposed price.
11. On the aft of the boat near the starboard dive door, a removeable winch structure to lift a minimum of 300 lbs.	Not included proposed price.
12. Replace two additional suspension seats with seat box on starboard aft of operation padded bench along interior starboard wall of pilot house with storage beneath; sized for stokes litter.	Not included proposed price.
13. On forward part of cabin, approximately ½ size in height access door, water tight, for personnel to exit cabin onto forward deck space.	Not included proposed price.
14. 15-year structural warrant on all hull, deck and cabin parts	Price is included in both vessels, however, the drawings are shown as specified above with two bench seats aft.



**Proposal for**  
**League City Texas**  
**All-Hazards Response Boat**  
**RFP #20-Fire-001 (R)**



**Technical Proposal**  
**Attachment A1 – General Arrangement**  
**Drawings – Endeavor 30 Fireboat**

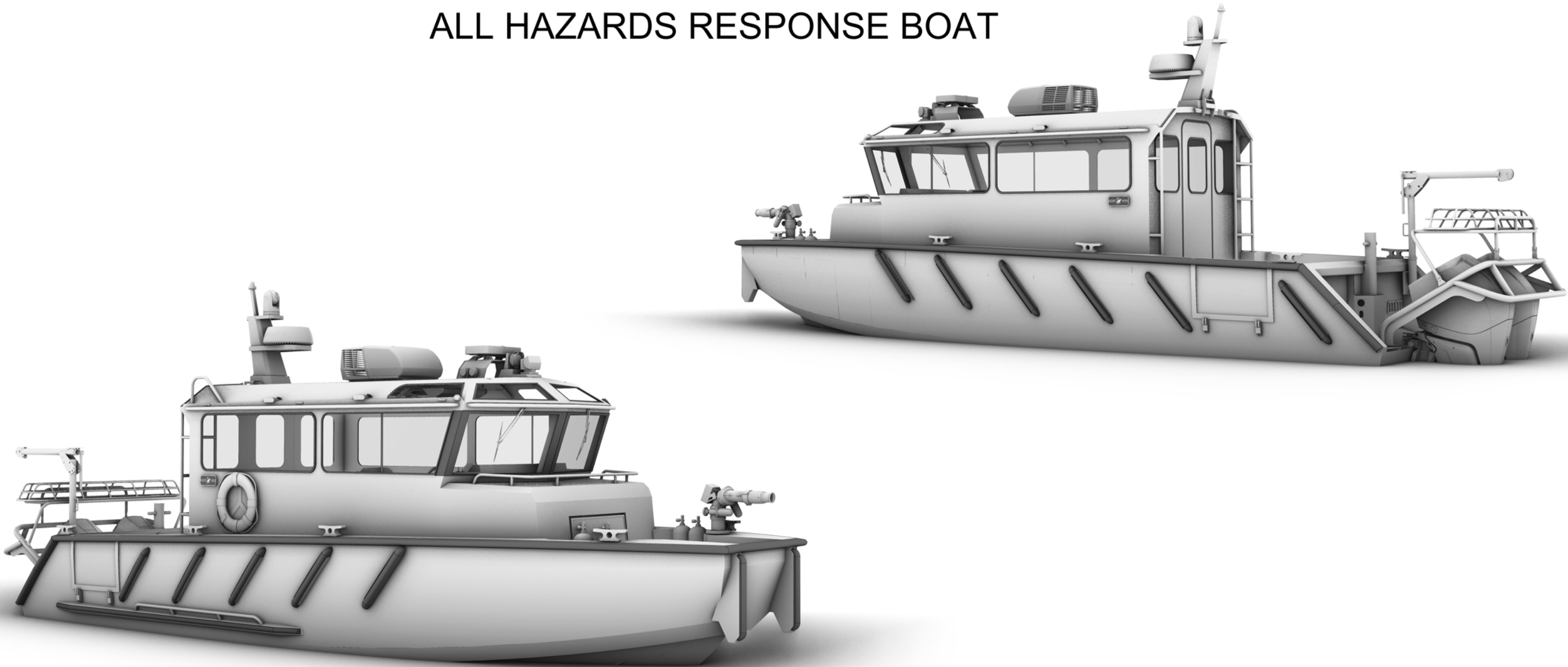


REV	REVISIONS	DATE	DRWN	CHKD
-	-	-	-	-

DESIGN PROPOSAL

ENDEAVOR SERIES 30'

ALL HAZARDS RESPONSE BOAT



GENERAL NOTES:

1. BOAT DESIGN AND CONSTRUCTION SHALL COMPLY WITH APPLICABLE US COAST GUARD AND AMERICAN BOAT AND YACHT COUNCIL REGULATIONS.
2. STORAGE LOCKER DIMENSIONS, SEATING CONFIGURATION AND ERGONOMICS, CANOPY OR CABIN DESIGN, AND OTHER EQUIPMENT STORAGE DETAILS TO BE CONFIRMED AT PRE-CONSTRUCTION ENGINEERING CONFERENCE.
3. ELECTRONICS, LIGHTING, AND OTHER OUTFITTING DETAILS NOT SHOWN SHALL BE INSTALLED AS PER DESIGN DEVELOPMENT AND SPECIFICATION.
4. FINAL DESIGN AND ARRANGEMENT IS SUBJECT TO OWNER INPUT AND APPROVAL
5. ALL DETAILS TO BE CONFIRMED AT PRE-CONSTRUCTION DESIGN REVIEW.

THIS DRAWING CONTAINS PROPRIETARY AND CONFIDENTIAL INFORMATION OF SILVER SHIPS, INC., AND LOANED IN CONFIDENCE WITH THE UNDERSTANDING THAT IT WILL NOT BE REPRODUCED NOR USED IN ANY MANNER WHATSOEVER DETRIMENTAL TO THE BEST INTEREST OF SILVER SHIPS, INC. AND THAT IT SHALL BE RETURNED ON DEMAND.  
TO SCALE WHEN PRINTED ON 11"x17" STOCK.



9243 BELLINGRATH ROAD  
THEODORE, ALABAMA 36582  
PHONE: (251) 973-0000  
FAX: (251) 973-2711  
www.silverships.com

DRWN BY: BAB    DATE: 10/18/2019  
CHKD BY:        DATE:  
APVD BY:        DATE:

ENDEAVOR SERIES 30'  
ALL HAZARDS RESPONSE BOAT

LEAGUE CITY ,TEXAS

SIZE B	SCALE AS NOTED	DWG # N30FB4 - 100	REV. P1
SOL. #	ITB #20-FIRE-002		SHEET: 1 OF 3

REV	REVISIONS	DATE	DRWN	CHKD
-	-	-	-	-

PRINCIPAL CHARACTERISTICS:

LENGTH, HULL: 30'

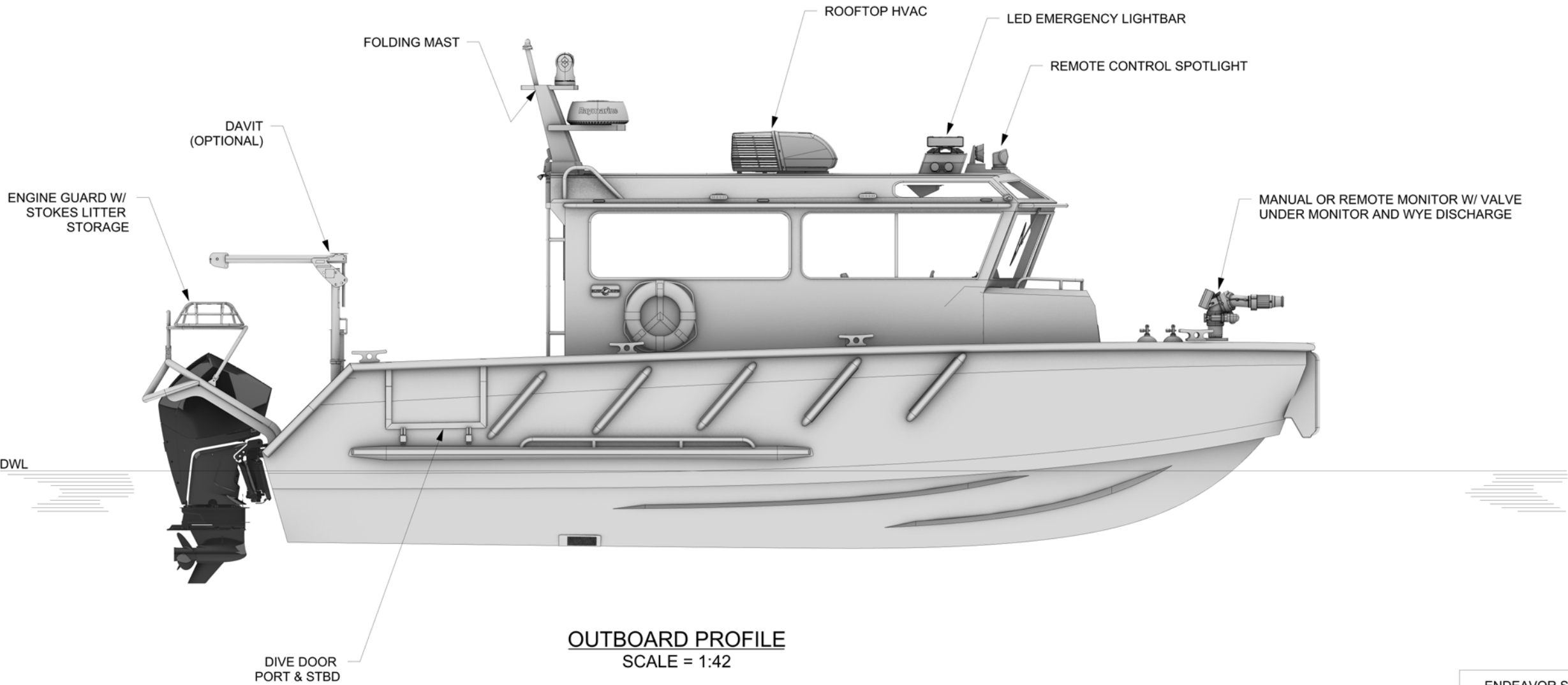
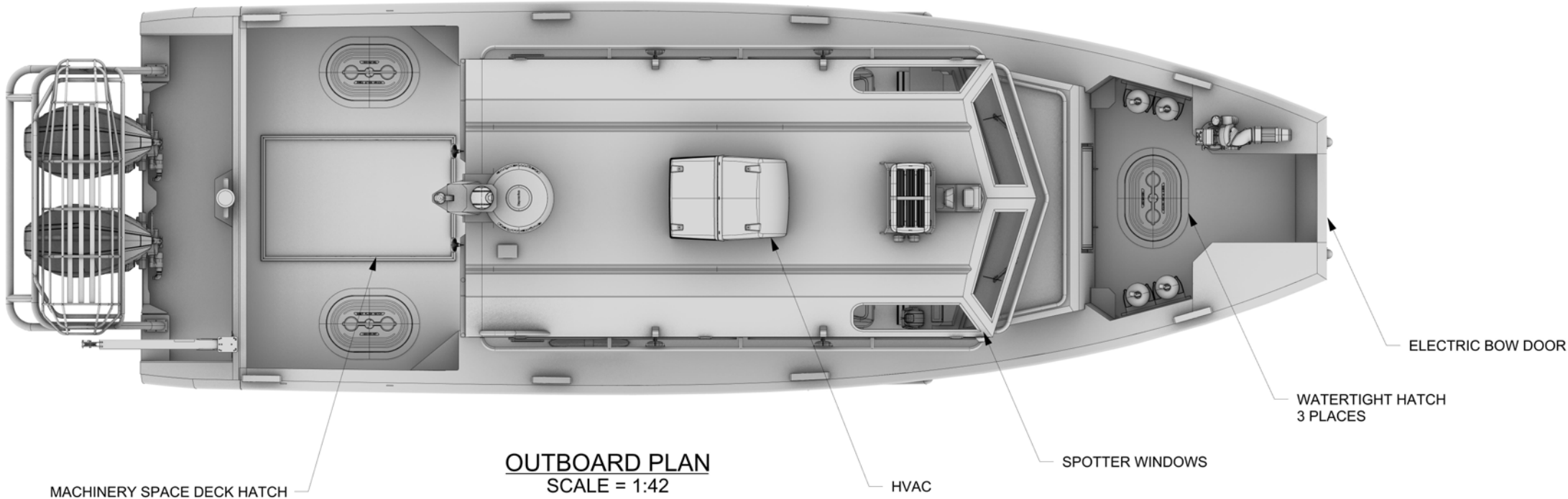
LENGTH, OVERALL: 33'-8"

BEAM, MAXIMUM: 10'

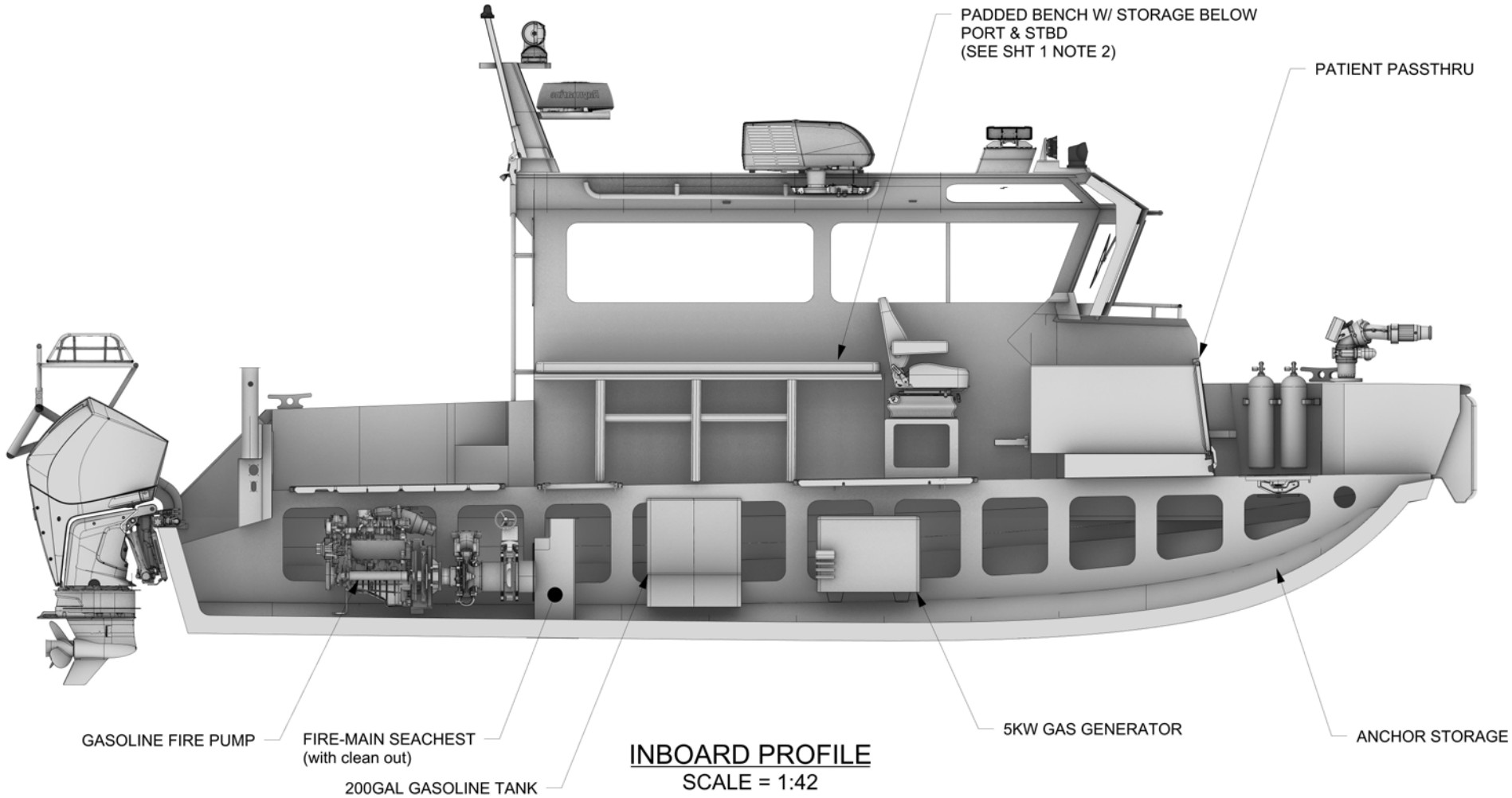
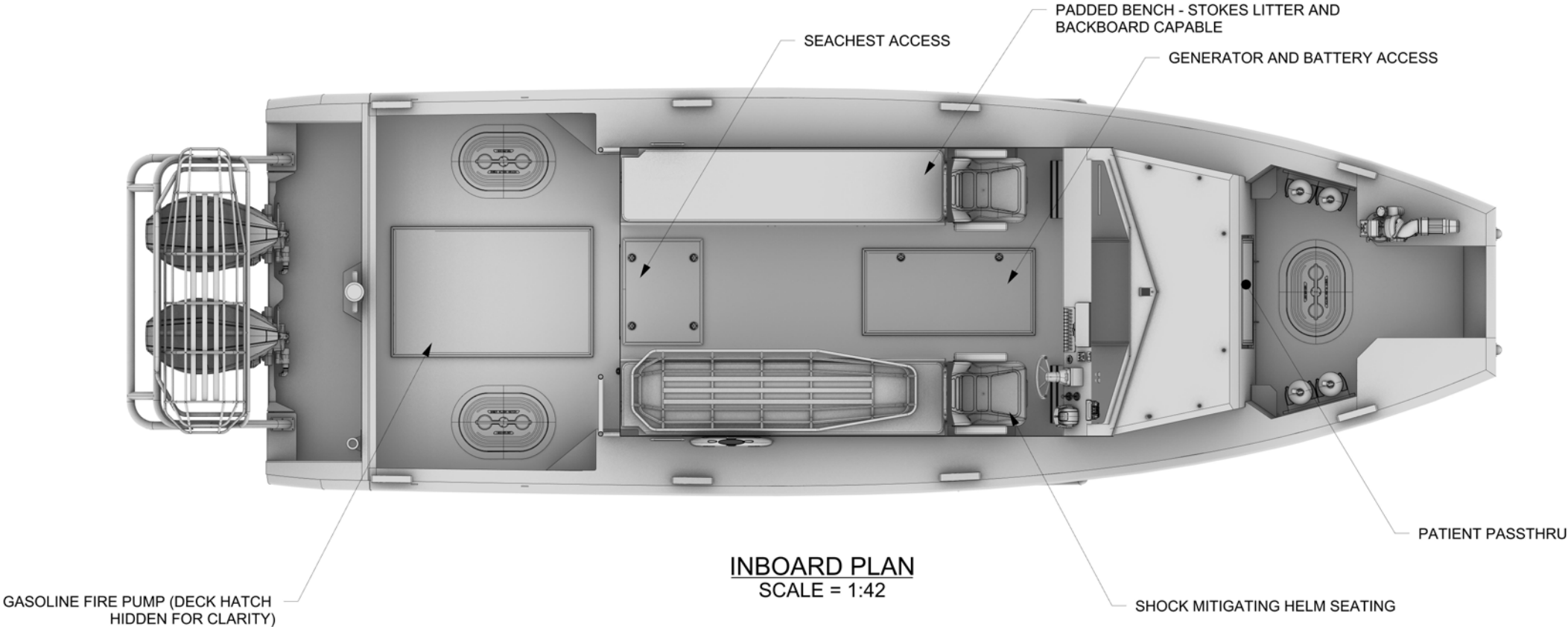
FUEL CAPACITY: GASOLINE 200gal

INSTALLED POWER: TWIN OR TRIPLE ENGINES UP TO 1050HP

PUMPING CAPACITY: UP TO 1000GPM



REV	REVISIONS	DATE	DRWN	CHKD
-	-	-	-	-





**Proposal for**  
**League City Texas**  
**All-Hazards Response Boat**  
**RFP #20-Fire-001 (R)**



**Technical Proposal**  
**Attachment A2 – General Arrangement**  
**Drawings – Endeavor 34 Fireboat**



REV	REVISIONS	DATE	DRWN	CHKD
-	-	-	-	-

DESIGN PROPOSAL  
ENDEAVOR SERIES 34'  
ALL HAZARDS RESPONSE BOAT



GENERAL NOTES:

1. BOAT DESIGN AND CONSTRUCTION SHALL COMPLY WITH APPLICABLE US COAST GUARD AND AMERICAN BOAT AND YACHT COUNCIL REGULATIONS.
2. STORAGE LOCKER DIMENSIONS, SEATING CONFIGURATION AND ERGONOMICS, CANOPY OR CABIN DESIGN, AND OTHER EQUIPMENT STORAGE DETAILS TO BE CONFIRMED AT PRE-CONSTRUCTION ENGINEERING CONFERENCE.
3. ELECTRONICS, LIGHTING, AND OTHER OUTFITTING DETAILS NOT SHOWN SHALL BE INSTALLED AS PER DESIGN DEVELOPMENT AND SPECIFICATION.
4. FINAL DESIGN AND ARRANGEMENT IS SUBJECT TO OWNER INPUT AND APPROVAL
5. ALL DETAILS TO BE CONFIRMED AT PRE-CONSTRUCTION DESIGN REVIEW.

THIS DRAWING CONTAINS PROPRIETARY AND CONFIDENTIAL INFORMATION OF SILVER SHIPS, INC., AND LOANED IN CONFIDENCE WITH THE UNDERSTANDING THAT IT WILL NOT BE REPRODUCED NOR USED IN ANY MANNER WHATSOEVER DETRIMENTAL TO THE BEST INTEREST OF SILVER SHIPS, INC. AND THAT IT SHALL BE RETURNED ON DEMAND.  
TO SCALE WHEN PRINTED ON 11"x17" STOCK.



9243 BELLINGRATH ROAD  
THEODORE, ALABAMA 36582  
PHONE: (251) 973-0000  
FAX: (251) 973-2711  
www.silverships.com

DRWN BY: BAB    DATE: 10/18/2019  
CHKD BY:        DATE:  
APVD BY:        DATE:

ENDEAVOR SERIES 34'  
ALL HAZARDS RESPONSE BOAT

LEAGUE CITY ,TEXAS

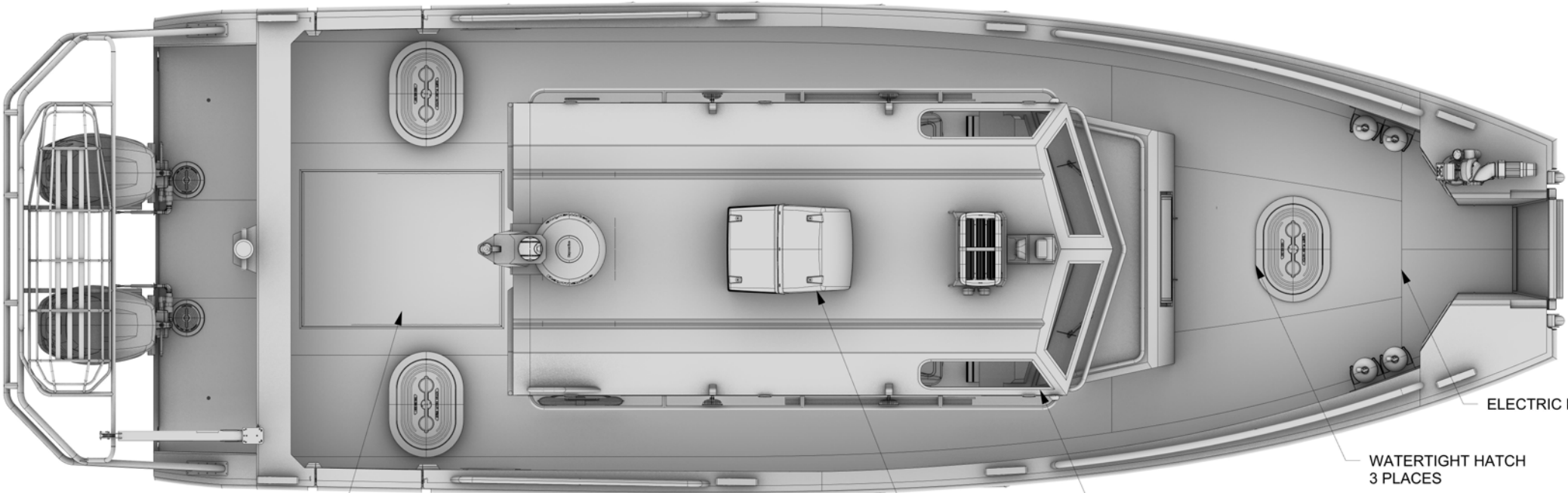
SIZE B	SCALE AS NOTED	DWG # N34FB4 - 100	REV. P1
SOL. #	ITB #20-FIRE-002		SHEET: 1 OF 3



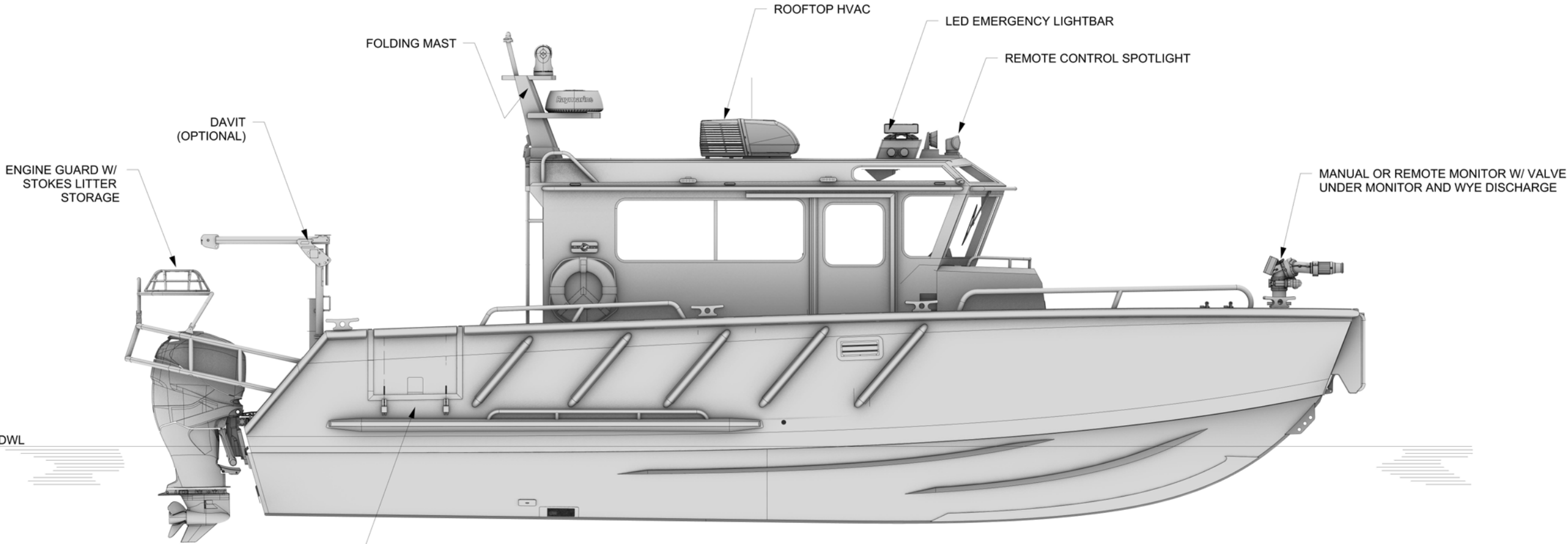
REV	REVISIONS	DATE	DRWN	CHKD
-	-	-	-	-

PRINCIPAL CHARACTERISTICS:

LENGTH, HULL:	34'-1"
LENGTH, OVERALL:	37'-8"
BEAM, MAXIMUM:	11'-11"
FUEL CAPACITY:	GAS 200gal
INSTALLED POWER:	UP TO 1050HP
PUMPING CAPACITY:	UP TO 3000GPM



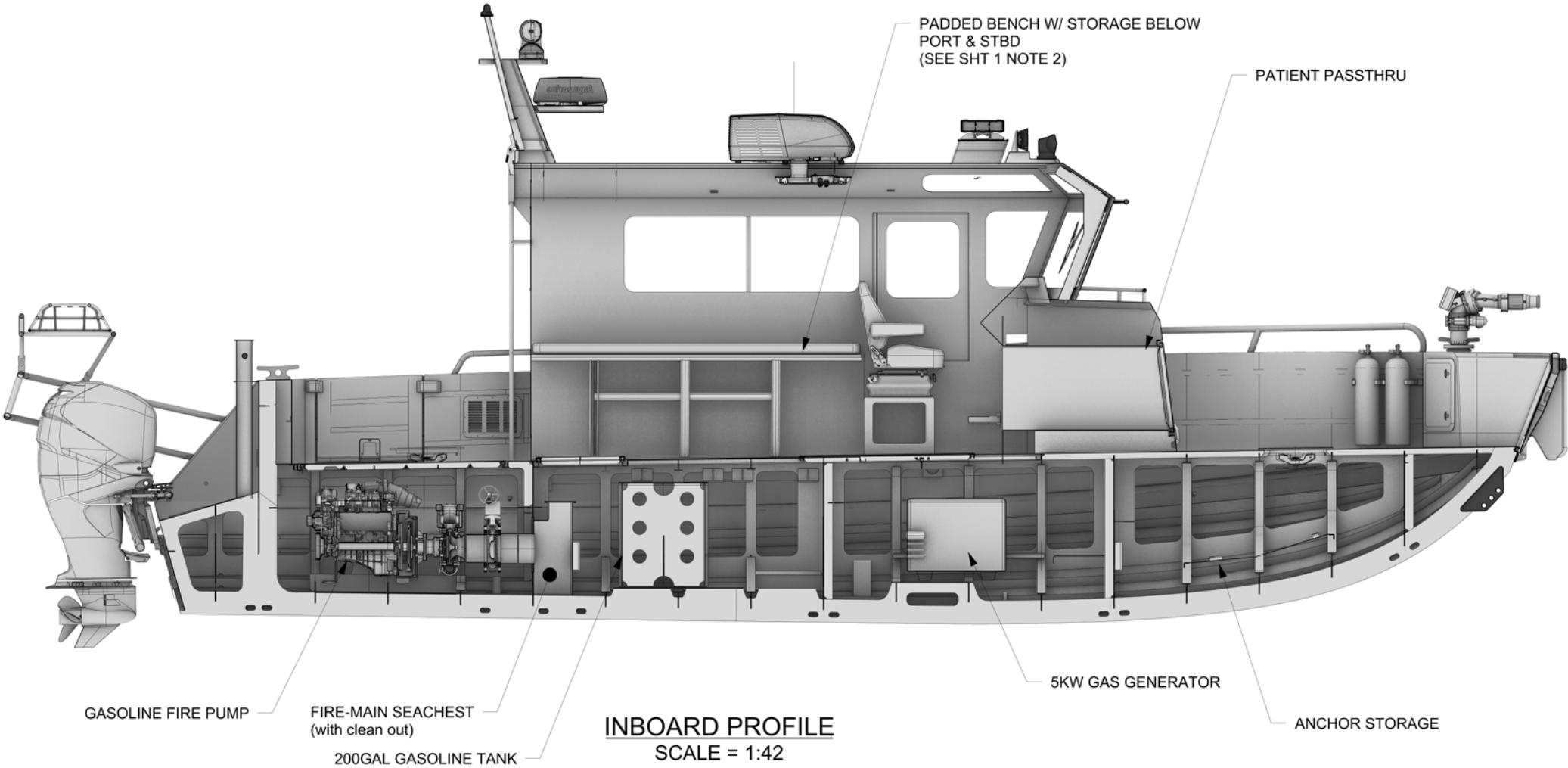
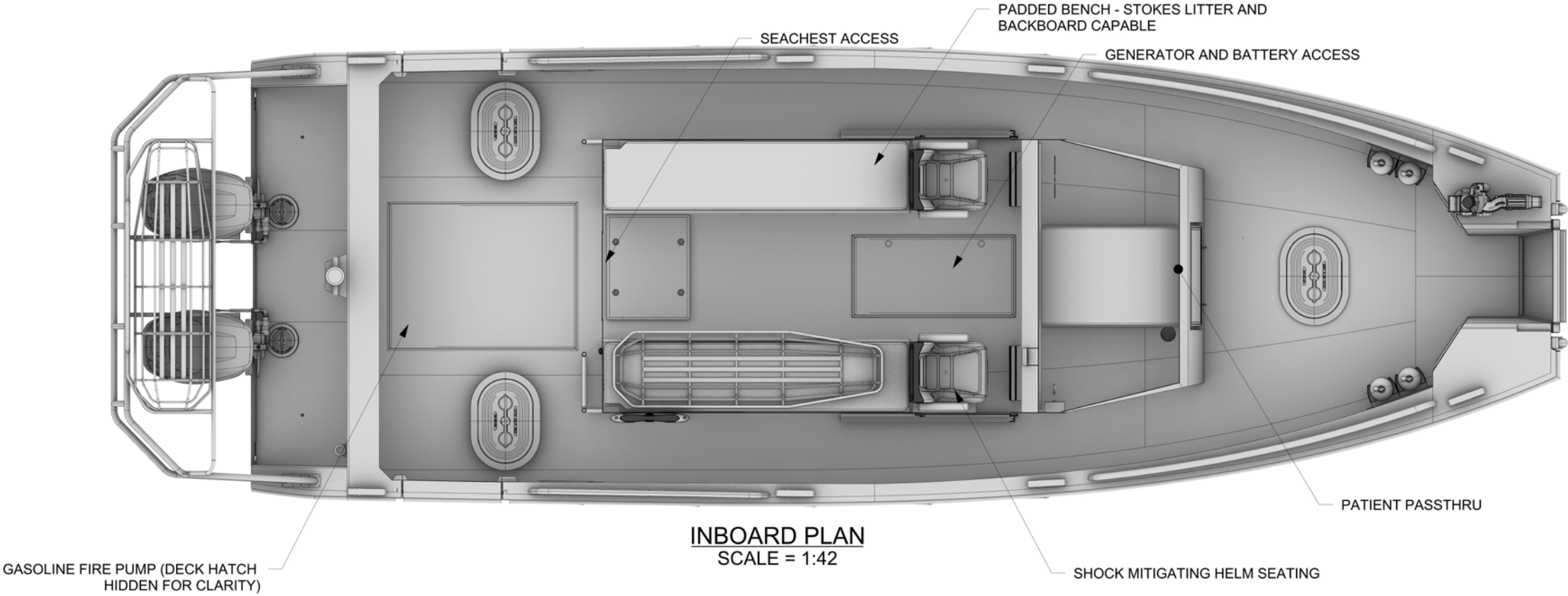
OUTBOARD PLAN  
SCALE = 1:42



OUTBOARD PROFILE  
SCALE = 1:42



REV	REVISIONS	DATE	DRWN	CHKD
-	-	-	-	-





**Proposal for**  
**League City Texas**  
**All-Hazards Response Boat**  
**RFP #20-Fire-001 (R)**



**Technical Proposal**  
**Attachment B – References and Past**  
**Performance**



**Jefferson Township Fire Protection District, Lake Hopatcong, NJ**

POC: Robert Kinsey, 973-219-2359, [bobkinseyjr@gmail.com](mailto:bobkinseyjr@gmail.com), Chief

Vessel Model: Explorer 30 Landing Craft

Year built: 2018

Length Overall: 30Ft

Propulsion Engines: Twin Mercury Verado 250HP Outboards

Project Description: The vessel was built for the Jefferson Township Fire Protection District in Lake Hopatcong, NJ as a new custom boat. Notable characteristics include the requirement for a very low air draft due to a low bridge in their area of operations. The vessel was customized with a number of features to include a DC operated folding mast to allow for transit under the low bridge without existing the cabin.



**Town of Islip Fire Department, Islip, NY**

POC: Roger Bleidner, 631-581-5418  
Vessel Model: Endeavor 34 Fire Boat  
Year Built: 2015  
Hull Length: 34 ft  
Propulsion Engines: Triple Mercury Outboards





**Lake Ozark Fire Protection District, Lake Ozark, MO**

POC: Matt Birdsley, [mbirdsley@lofpd.com](mailto:mbirdsley@lofpd.com), Assistant Chief

Vessel Model: Endeavor 34 Fire Boat

Year Built: 2018

Hull Length: 34 feet

Propulsion Engines: Triple Mercury Outboards



**League City Texas  
All-Hazards Response Boat  
RFP #20-Fire-001 (R)**



---

**East Hampton Harbor Police, East Hampton, NY**

POC: Ed Michels, [emichels@ehtpd.org](mailto:emichels@ehtpd.org), 631-537-6863

Vessel Model: Endeavor 36 Multi-Mission Patrol / Fire Boat

Year Built: 2017

Hull Length: 33 feet

Propulsion Engines: Triple Yamaha Outboards



---

**Source Selection Sensitive  
Silver Ships Proprietary**

**East Baton Rouge Parish Sheriff's Office, Baton Rouge, LA**

POC: Capt Darryl Armentor, [darmentor@ebrso.org](mailto:darmentor@ebrso.org), 225-733-8085

Vessel Model: Endeavor 45 Multi-Mission Patrol / Fire Boat

Year Built: 2018

Hull Length: 45 feet

Propulsion Engines: Twin Cummins QSB6.7 Diesel Engines with Konrad Outdrives







**Proposal for**  
**League City Texas**  
**All-Hazards Response Boat**  
**RFP #20-Fire-001 (R)**



**Technical Proposal**  
**Attachment C - Warranty**





---

***SILVER SHIPS, INC. warrants as follows:***

For the lifetime of the vessel from the date of acceptance, the hull of the covered boat will be free from defects caused by faulty workmanship, installation or materials; and

For a period of fifteen (15) years from the date of acceptance, all other aluminum fabrication of the covered boat, including fuel tank, will be free from structural defects caused by faulty workmanship or materials; and

For a period of one (1) year from the date of acceptance, the covered boat will be free from defects caused by faulty workmanship, installation or materials; and

Only parts and accessories manufactured by Silver Ships, Inc., are covered by this limited warranty.

OEM provided equipment will be covered by existing manufacturer warranty. Silver Ships warrants only the installation of these part (e.g. propulsion, fire systems, electronics, etc.)

Any extended warranty on the hull, deck and consoles of the vessel will cover faulty workmanship or materials and not normal wear and tear.

The following items are expressly EXCLUDED to wit:

The lifetime warranty of the hull is not transferable and normal galvanic corrosion not the result of faulty workmanship is excluded; and

Parts and accessories not manufactured by SILVER SHIPS, INC. including, but not limited to, electronics, controls, and instrumentation. However, if included with the original sale, the installation of these parts and accessories is covered for a period of one (1) year.

Paint damage of fading as a result of normal use. This is a cosmetic not structural and therefore not considered defective material or workmanship.

Damage resulting from abuse, misuse, accidents, overloading or powering in excess of the recommended maximum horsepower, use of improper trailer, modification or alteration of hull including penetration of the hull by anyone other than Silver Ships authorized personnel.



Corrosion or electrolysis caused by the owner installation of bronze, brass or steel components to the hull, cabin or other aluminum parts is not covered by this warranty.

BE ADVISED: any unauthorized repairs or actions taken that alter the design or configuration of the boat, modify or realign the hull, deck or consoles, or affixing of accessories or equipment which jeopardizes the structural integrity or design parameters of the boat shall VOID this warranty. The owner shall assume full responsibility for the consequences of any such actions.