


PLANS OF PROPOSED
HOLIDAY IN THE PARK
SPECIAL EVENT LANE CLOSURE
CITY OF LEAGUE CITY

INDEX TO SHEETS

SHEET NO.	SHEET DESCRIPTION
	COVER SHEET
	DETOUR ROUTE
	PARADE ROUTE
0-14	PARADE LANE CLOSURE



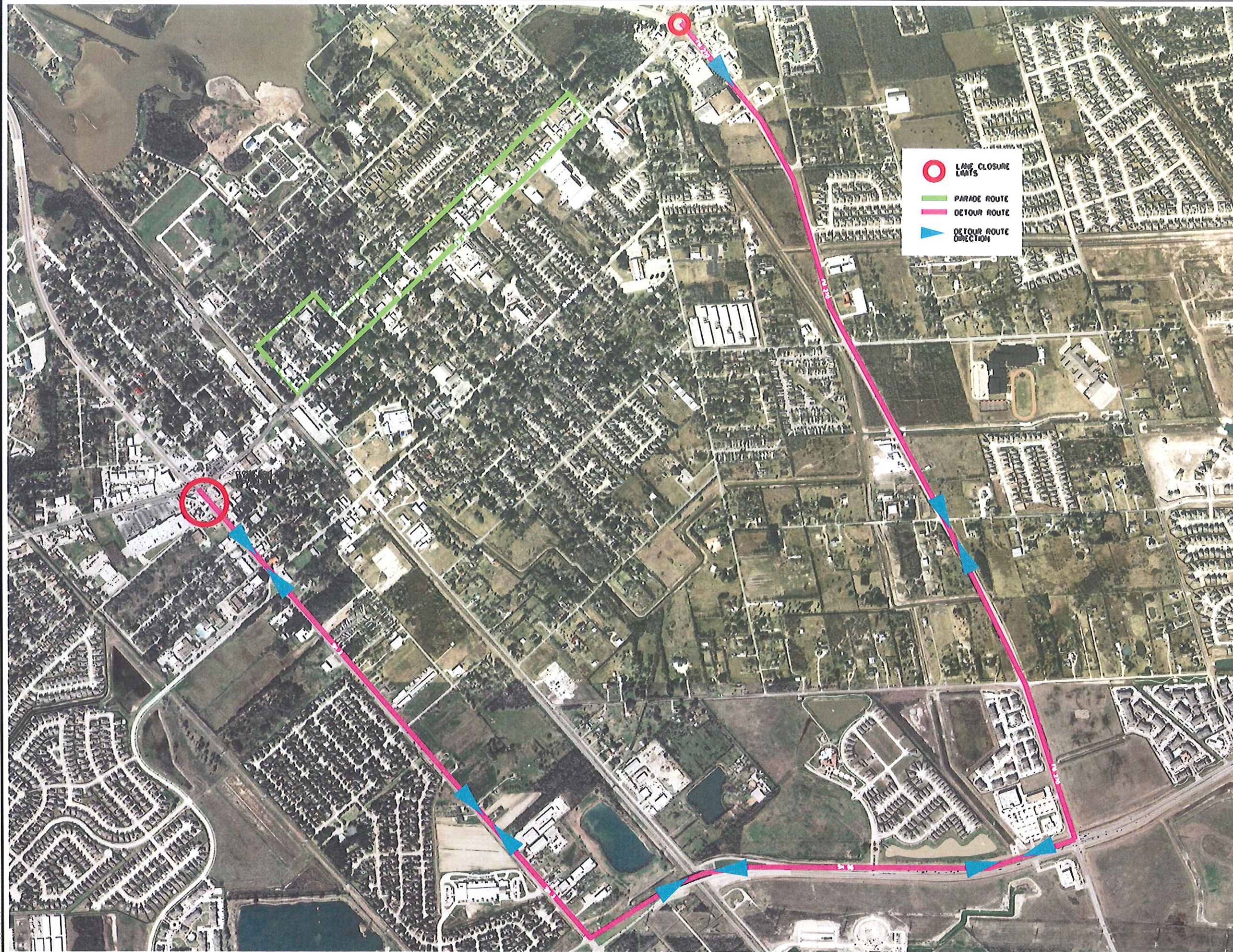
SITE MAP
N.T.S.

APPROVED BY:   7-3-13

CITY OF LEAGUE CITY
DIRECTOR OF ENGINEERING

DATE

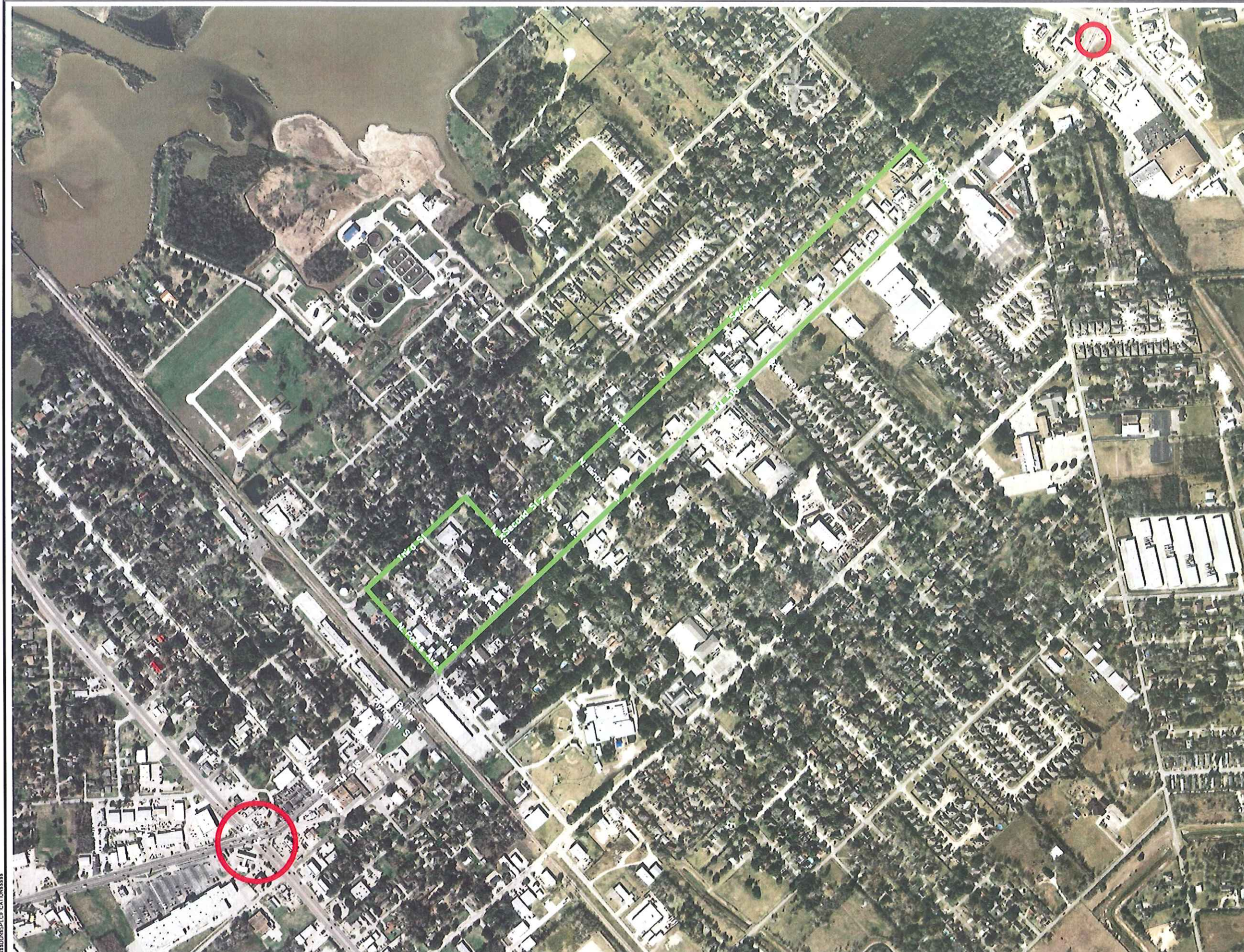
A Tribute to Santa's Elves & Workshop at the North Pole

[illegible]

HOLIDAY IN THE PARK
PARADE AND FESTIVAL



PROJECT NO.	
DRAWN: M.M.B.	Checked: RLW
SCALE:	DATE: 2013
SHEET:	OF: XX

PARADE
SPECIAL EVENT

A Tribute to Santa's Elves & Workshop at the North Pole



LANE CLOSURE LIMITS

PARADE ROUTE

[illegible]

**HOLIDAY IN THE PARK
PARADE AND FESTIVAL**



PROJECT NO.	
DRAWN: M.M.B.	Checked: RLW
SCALE:	DATE: 2013
SHEET:	OF: XX



PARADE
SPECIAL EVENT



Holiday In The Park
A Tribute to Santa's Elves &
Workshop at the North Pole



DATE	REVISION	BY

HOLIDAY IN THE PARK
PARADE AND FESTIVAL



PROJECT NO.	
DRAWN: M.M.B.	Checked: RLW
SCALE:	DATE: 2013
SHEET: 0	OF: XX

MATCH LINE "0"

PARADE
SPECIAL EVENT



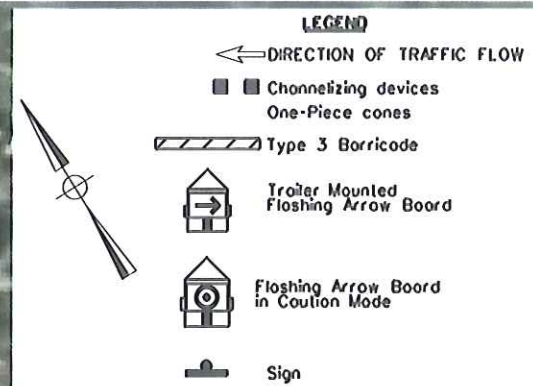
A Tribute to Santa's Elves & Workshop at the North Pole

[illegible]

**HOLIDAY IN THE PARK
PARADE AND FESTIVAL**



PROJECT NO.	
DRAWN: M.M.B.	Checked: RLW
SCALE:	DATE: 2013
SHEET: 1	OF: XX



MATCH LINE "1"

MATCH LINE "1"

PARADE
SPECIAL EVENT



A Tribute to Santa's Elves & Workshop at the North Pole

[illegible]

HOLIDAY IN THE PARK
PARADE AND FESTIVAL



PROJECT NO.	
DRAWN: M.M.B.	Checked: RLW
SCALE:	DATE: 2013
SHEET: 2	OF: XX



MATCH LINE "2"

MATCH LINE "2"

PARADE
SPECIAL EVENT



Holiday In The Park
A Tribute to Santa's Elves &
Workshop at the North Pole



DATE	REVISION	BY

HOLIDAY IN THE PARK
PARADE AND FESTIVAL



PROJECT NO.	
DRAWN: M.M.B.	Checked: RLW
SCALE:	DATE: 2013
SHEET: 3	OF: XX

LEGEND

← DIRECTION OF TRAFFIC FLOW

■ Channelizing devices
One-Piece cones

▨ Type 3 Barricade

Trailer Mounted
Flashing Arrow Board

Flashing Arrow Board
in Caution Mode

Sign

FM 518

MATCH LINE "3"

DATE: 11/15/13
TIME: 11:00 AM
DRAWN: M.M.B.
CHECKED: RLW
DATE: 11/15/13
SHEET: 3 OF XX

MATCH LINE "3"

PARADE
SPECIAL EVENT



*Holiday In The Park
A Tribute to Santa's Elves &
Workshop at the North Pole*



DATE	REVISION	BY

HOLIDAY IN THE PARK
PARADE AND FESTIVAL



PROJECT NO.	
DRAWN: M.M.B.	Checked: RLW
SCALE:	DATE: 2013
SHEET: 4	OF: XX

LEGEND

← DIRECTION OF TRAFFIC FLOW

■ Channelizing devices
One-Piece cones

▨ Type 3 Barricade

Trailer Mounted
Flashing Arrow Board

Flashing Arrow Board
in Cauton Mode

Sign

FM 518

MATCH LINE "4"

DATE: 11/23/12
TIME: 1:00 PM
SHEET: 4 OF 4
SPECIFICATION: 1111

MATCH LINE "4"

PARADE
SPECIAL EVENT



Holiday In The Park
A Tribute to Santa's Elves &
Workshop at the North Pole



DATE	REVISION	BY

HOLIDAY IN THE PARK
PARADE AND FESTIVAL



PROJECT NO.	
DRAWN: M.M.B.	Checked: RLW
SCALE:	DATE: 2013
SHEET: 5	OF: XX

LEGEND

← DIRECTION OF TRAFFIC FLOW

■ Channelizing devices

One-Piece cones

▨ Type 3 Barricade



Trailer Mounted
Flashing Arrow Board



Flashing Arrow Board
in Cautlon Mode



Sign

FM 518

Briarglen Dr.

MATCH LINE "5"

MATCH LINE "5"

PARADE
SPECIAL EVENT



Holiday In The Park
A Tribute to Santa's Elves &
Workshop at the North Pole



DATE	REVISION	BY

HOLIDAY IN THE PARK
PARADE AND FESTIVAL



PROJECT NO.	
DRAWN: M.M.B.	Checked: RLW
SCALE:	DATE: 2013
SHEET: 6	OF: XX

LEGEND

← DIRECTION OF TRAFFIC FLOW

■ Channelizing devices
One-Piece cones

▨ Type 3 Barricade



Trailer Mounted
Flashing Arrow Board



Flashing Arrow Board
in Caution Mode



Sign

FM 518

Reynolds Ave.

MATCH LINE "6"

SDATES
8 TIMES
1255150105SPECIFICATION125515

MATCH LINE "6"

PARADE
SPECIAL EVENT



Holiday In The Park
A Tribute to Santa's Elves &
Workshop at the North Pole



DATE	REVISION	BY

HOLIDAY IN THE PARK
PARADE AND FESTIVAL



[Handwritten Signature]
7-3-13

PROJECT NO.	
DRAWN: M.M.B.	Checked: RLW
SCALE:	DATE: 2013
SHEET: 7	OF: XX



MATCH LINE "7"

2013
11/15
2551500HSP/CF/CATIONE1113



MATCH LINE "8"

PROJECT NO.	
DRAWN: M.M.B.	Checked: RLW
SCALE:	DATE: 2013
SHEET: 8	OF: XX

MATCH LINE "8"

PARADE
SPECIAL EVENT



Holiday In The Park
A Tribute to Santa's Elves &
Workshop at the North Pole



DATE	REVISION	BY

HOLIDAY IN THE PARK
PARADE AND FESTIVAL



PROJECT NO.	
DRAWN: M.M.B.	Checked: RLW
SCALE:	DATE: 2013
SHEET: 9	OF: XX

LEGEND

← DIRECTION OF TRAFFIC FLOW

■ Channelizing devices
One-Piece cones

▨ Type 3 Barricade



Trailer Mounted
Flashing Arrow Board



Flashing Arrow Board
in Cautlon Mode



Sign

N. Kossos Ave.

FM 518

Colorado Ave.

MATCH LINE "9"

MATCH LINE "9"

PARADE
SPECIAL EVENT



Holiday In The Park
A Tribute to Santa's Elves &
Workshop at the North Pole



DATE	REVISION	BY

HOLIDAY IN THE PARK
PARADE AND FESTIVAL



PROJECT NO.	
DRAWN: M.M.B.	Checked: RLW
SCALE:	DATE: 2013
SHEET: 10	OF: XX

LEGEND

← DIRECTION OF TRAFFIC FLOW

■ Channelizing devices
One-Piece cones

▨ Type 3 Barricade



Trailer Mounted
Flashing Arrow Board



Flashing Arrow Board
in Caution Mode



Sign

CITY OF LEAGUE CITY OFFICER



N. Parks Ave.
Parade Route

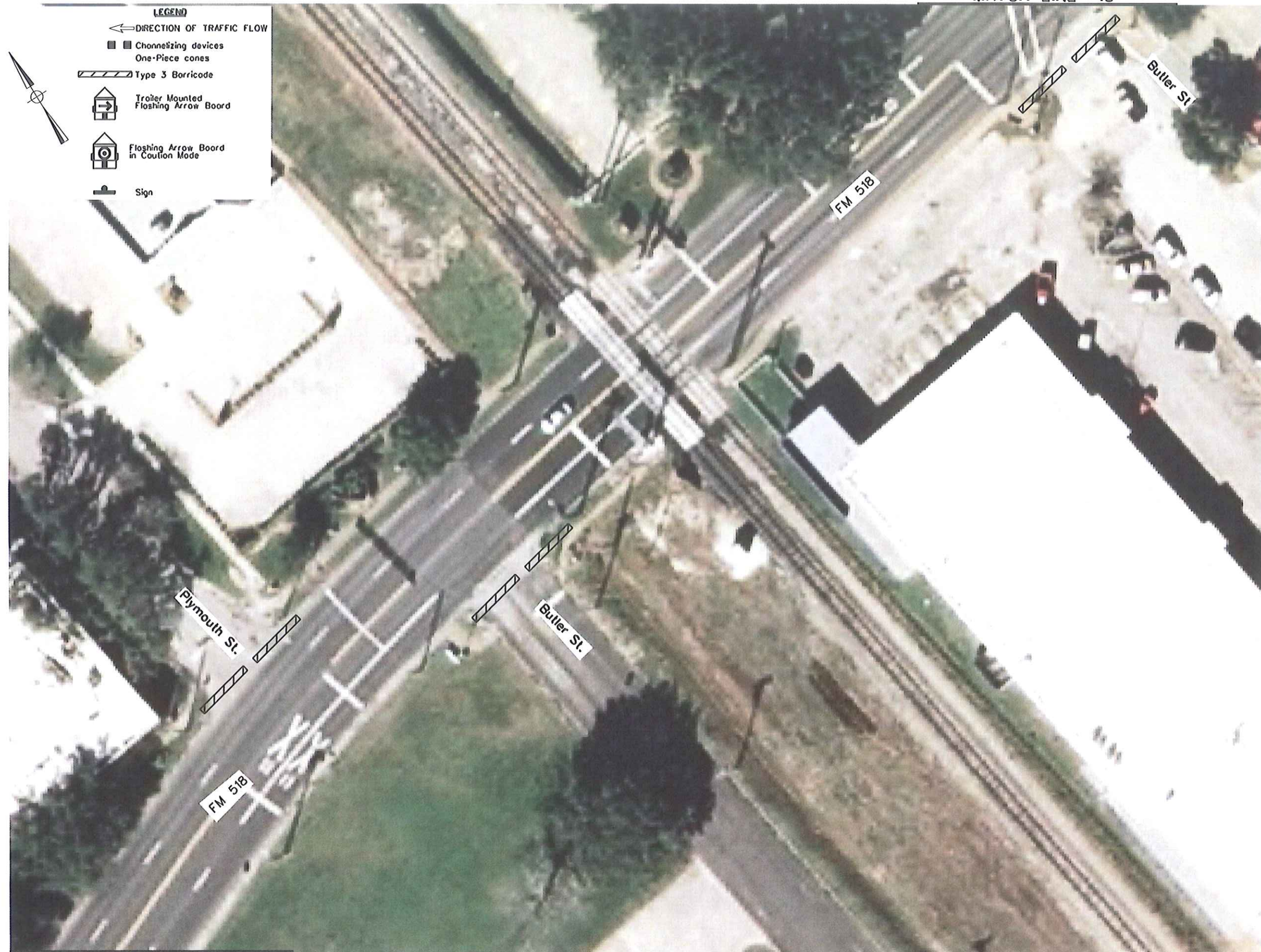
FM 518

Parks Ave.

N. Michigan Ave.

Butler St.

MATCH LINE "10"



MATCH LINE "11"

PROJECT NO.	
DRAWN: M.M.B.	Checked: RLW
SCALE:	DATE: 2013
SHEET: 11	OF: XX



PROJECT NO.	
DRAWN: M.M.B.	Checked: RLW
SCALE:	DATE: 2013
SHEET: 12	OF: XX

MATCH LINE "12"

LEGEND

← DIRECTION OF TRAFFIC FLOW

■ Channelizing devices
One-Piece cones

▨ Type 3 Barricade



Trailer Mounted
Flashing Arrow Board



Flashing Arrow Board
in Caution Mode



Sign

Houston Ave.

FM 518

CITY OF LEAGUE CITY OFFICER



ROAD
CLOSED

R11-2
48" X 30"

SH 3

20' L.C.

MATCH LINE "13"

PARADE
SPECIAL EVENT



Holiday In The Park
A Tribute to Santa's Elves &
Workshop at the North Pole



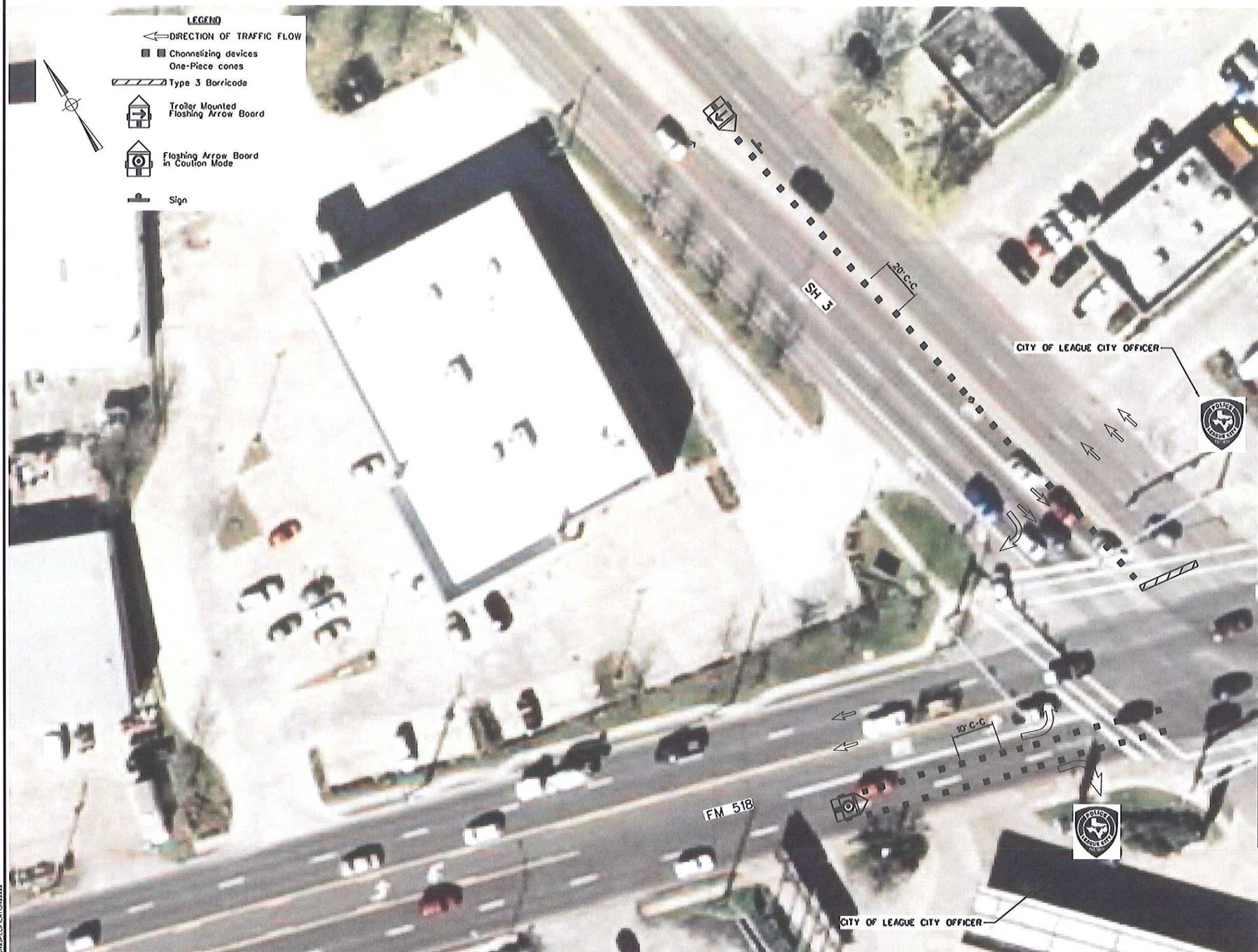
DATE	REVISION	BY

HOLIDAY IN THE PARK
PARADE AND FESTIVAL

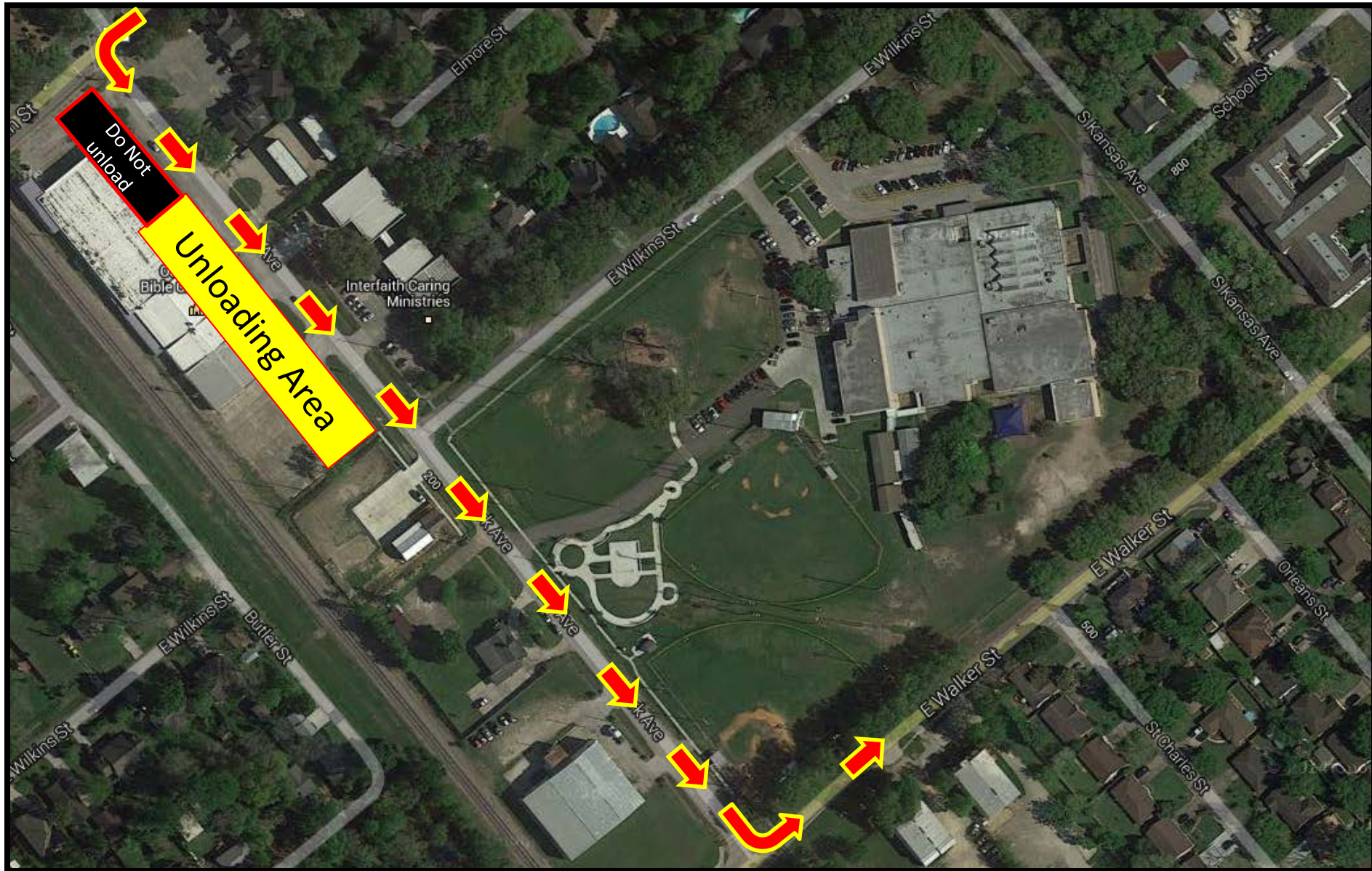


PROJECT NO.	
DRAWN: M.M.B.	Checked: RLW
SCALE:	DATE: 2013
SHEET: 13	OF: XX

DATE: 11/13/13
TIME: 1:13 PM
SHEET: 13 OF 13

SOATES
STIMES
SESSOCNESPECIFICATIONSSESS

End Parade Route



Route to return to parking area

