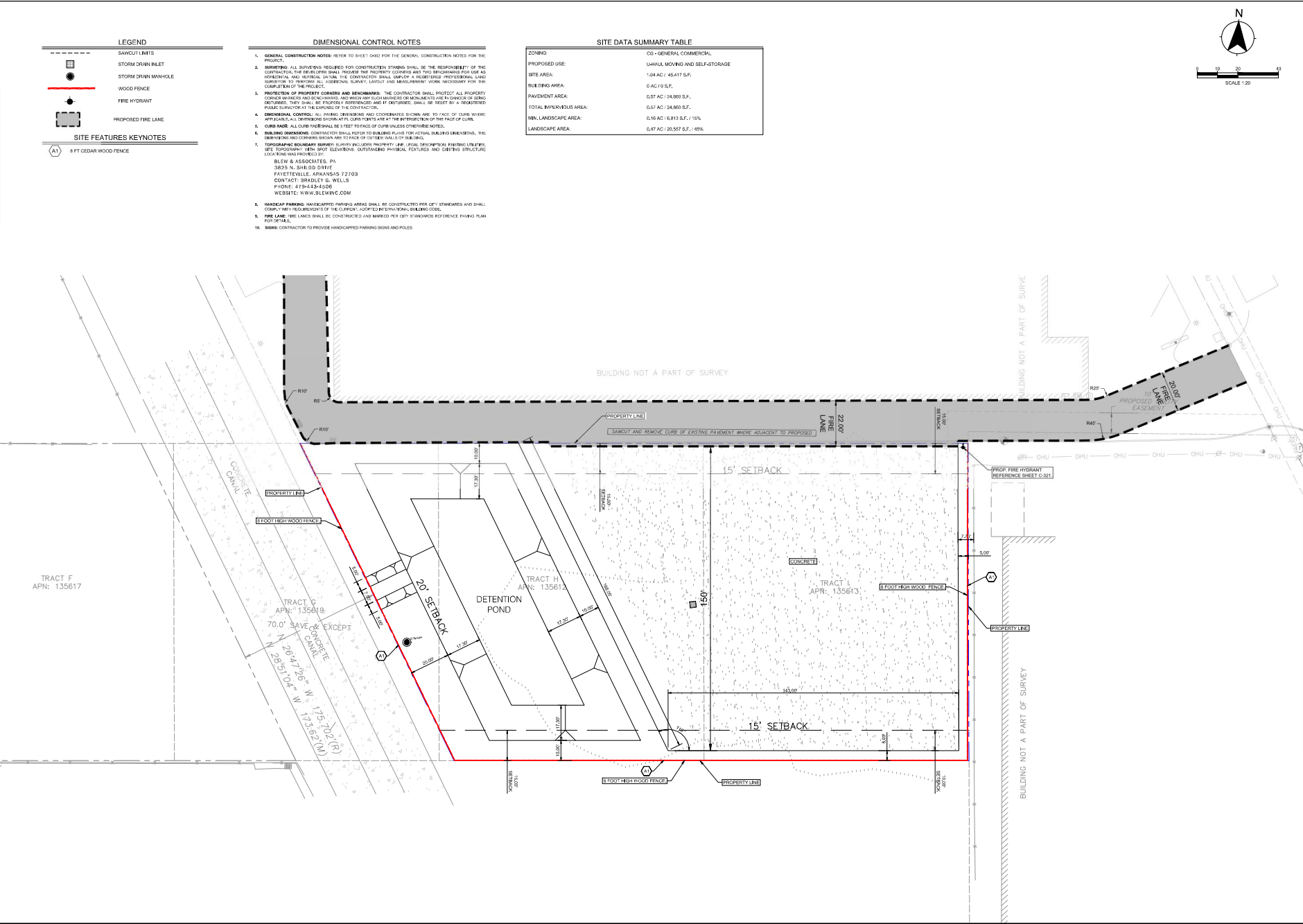


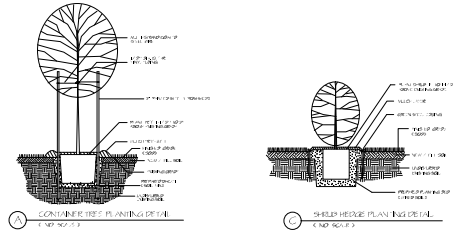
Exhibit B



SHEET NOTES:	
HOBBS ROAD UHAUL 1.04 ACRES	
LEGAL DESCRIPTION: ABST 3.3 F AUSTIN SUR PT OF LOT 13 BRASKORA GARDENS	
CITY OF LEAGUE CITY	
REVISIONS:	
NO.	DATE DESCRIPTION
1	03/07/2024 ISSUE TO UHAUL
2	04/25/2025 SUP-25-0006
3	05/20/2025 SUP-25-0006
PROFESSIONAL SEAL:	
ARCHITECT LOGO:	
ALTAR GROUP	
ARCHITECTURE ENGINEERING	
AMERCO. REAL ESTATE COMPANY	
CONSTRUCTION DEPARTMENT 2727 NORTH CENTRAL AVENUE PHOENIX, ARIZONA 85004 P: (602) 263-6502	
SHEET CONTENTS:	
SITE PLAN	
745071	
DRAWN:	KC
CHECKED:	AH
DATE:	03/05/2024
C-101	

Exhibit B

LEGEND		
BC		BALD CYPRESS
CP		CHINESE PISTACHE
LO		LIVE OAK
OL		PINK OLEANDER
PG		PAMPAS GRASS
WL		WAXLEAF LIGUSTRUM
		HYDROMULCH AND SOD



LANDSCAPE ANALYSIS DATA	
A) TOTAL SITE	(TOTAL SITE SF: 45,417 SF)
A) LANDSCAPE AREA	(TOTAL SITE SF: 45,417 SF)
45,417 SF x 15% = 6,813 SF LANDSCAPE AREA REQUIRED	
18,290 SF LANDSCAPE AREA PROVIDED	(40%)
D) SHRUBS	
CONTINUOUS WAXLEAF LIGUSTRUM HEDGE	(3' MIN. HT. AT PLANTING)

LANDSCAPE PLAN
SCALE: 1" = 20'



PLANT LIST			
QUANT.	SYMBOL	PLANT TYPE	SIZE
3	BC	BALD CYPRESS TAX ODUM DISTICHUM	45-65 GAL. 2.2" CAL. MIN.
2	CP	CHINESE PISTACHE PISTACIA CHINENSIS	30 GAL. 2.5" CAL. MIN.
12	PG	PAMPAS GRASS	45-65 GAL. 2.5" CAL. MIN.
17	OL	DWARF PINK OLEANDER	3 - 5 GAL.
36	WL	WAXLEAF LIGUSTRUM	3 - 5 GAL.
	HYDRO	HYDROMULCH OR SOD	SQ. FT.

TOTAL SITE: 45,417 SF (1.04 AC)
LANDSCAPE AREA: 18,290 SF (0.42 AC)
PAVED AREA: 24,861 SF (0.57 AC)
TREES: 5
PROPOSED DEVELOPMENT IS A MULTIPURPOSE PAVED AREA, NOT SPECIFICALLY INTENDED FOR PARKING.

NOTES:

- HYDROMULCH ALL CONSTRUCTION DISTURBED AREAS.
- ALL NEW LANDSCAPE AREAS AND PLANTINGS TO BE IRRIGATED WITH A PROFESSIONALLY DESIGNED AND INSTALLED AUTOMATIC LANDSCAPE IRRIGATION SYSTEM (TO BE DESIGNED UPON SITE AND LANDSCAPE PLAN APPROVAL)

LANDSCAPE NOTES:

TYPICAL TREE PLANTING NOTES

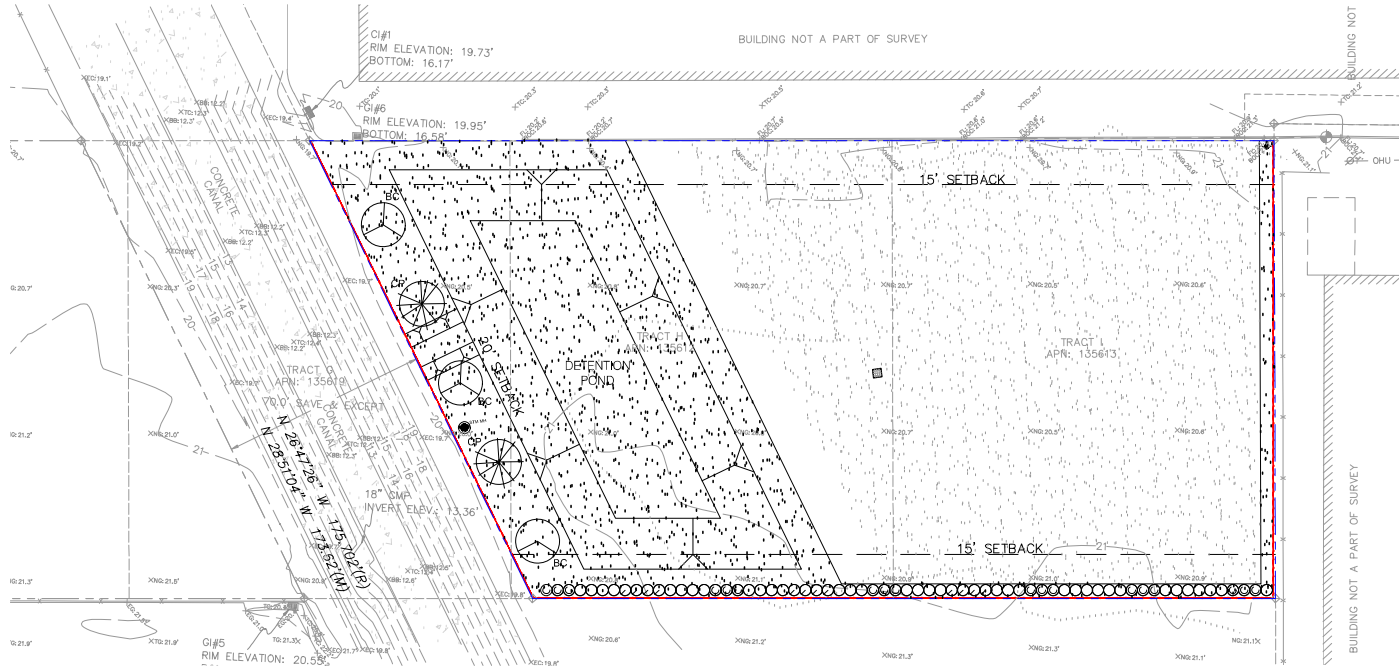
- ALL PLANT MATERIALS SHALL BE IN ACCORDANCE WITH THE AMERICAN STANDARDS FOR NURSERY STOCK (ANSI Z60.1-2004), PLANT ACCORDING TO ANSI A300 PART 6.
- DIG THE PLANTING HOLE A MINIMUM OF 2X WIDTH OF ROOTBALL FOR AT LEAST THE FIRST 12 INCHES OF DEPTH. BELOW 12 INCHES, DIG HOLE WIDE ENOUGH TO PERMIT ADJUSTING. DO NOT DIG THE HOLE DEEPER THAN ROOT BALL DEPTH.
- SCAFFRY THE SUBGRADE AND SIDES OF THE PLANTING HOLE WHEN PLANTING IN CLAY SOILS (MORE THAN 15% CLAY).
- LIFT AND SET THE TREE BY ROOT BALL ONLY. DO NOT LIFT USING THE TREE TRUNK AND DO NOT USE TREE TRUNK AS A LEVER.
- SET THE TOP OF THE ROOT BALL LEVEL WITH THE SOIL SURFACE OR SLIGHTLY HIGHER IF THE SOIL IS PRONE TO SETTLING.
- AFTER THE TREE IS SET IN PLACE, REMOVE BURLAP, WIRE AND STRAPS FROM AT LEAST THE UPPER 1/3 OF THE ROOTBALL.
- BACKFILL WITH EXISTING SOIL THAT HAS BEEN WELL-TILLED OR BROKEN UP. DO NOT ADD AMENDMENTS TO THE BACKFILL SOIL. AMEND THE SURFACE WITH MULCH.
- USE THREE 2" X 2" WOOD STAKES DRIVEN INTO UNDISTURBED SOIL, A MINIMUM OF 16 SPACE STAKES EQUALLY AROUND THE TREE.
- ATTACH 3/4" NYLON WEBBING TO CONNECT THE STAKES. ATTACH WEBBING AT 1/3 THE TREE HEIGHT.
- APPLY A 2-3" (SETTLED) DEPTH OF PINE STRAW OR BARK MULCH TO THE PLANTING SURFACE. LEAVE A 2" SPACE AROUND THE TRUNK FOR AIR CIRCULATION.
- PRUNING SHALL BE LIMITED TO DEAD, DISEASED, OR BROKEN LIMBS ONLY AND SHALL BE IN ACCORDANCE WITH ANSI A300 SPECIFICATIONS.
- REMOVE ANY TRUNK WRAP REMAINING AT TIME OF PLANTING. NO WRAPS SHALL BE PLACED ON TRUNK.

TYPICAL SHRUB PLANTING NOTES

- DIG PLANTING HOLE AT LEAST 2X THE WIDTH OF THE ROOT BALL OR CONTAINER.
- SCAFFRY SUBGRADE AND SIDES OF PLANTING HOLE WHEN PLANTING IN CLAY SOIL.
- SET THE TOP OF THE ROOT BALL LEVEL WITH THE SOIL SURFACE, OR 1-2" ABOVE IF THE SOIL IS PRONE TO SETTLING.
- IF CONTAINER GROWN PLANT, GENTLY SLIDE PLANT OUT OF CONTAINER. DISTURB THE ROOTS.
- IF BAB PLANT, REMOVE BURLAP FROM AT LEAST THE TOP 12 INCHES OF THE ROOTBALL, WITHOUT DISTURBING THE ROOTBALL. REMOVE ALL CORD FROM THE TRUNK. REMOVE BURLAP AND WIRE BASKET (IF PRESENT) FROM THE ROOT BALL.
- BACK FILL THE PLANTING HOLE WITH EXCAVATED NATIVE SOIL, BROKEN UP OR TILLED. WATER TO REMOVE AIR POCKETS. DO NOT ADD AMENDMENTS.
- PLACE PINE STRAW OR BARK MULCH ON THE SURFACE TO A (SETTLED) DEPTH OF 1 TO 3 INCHES

SOD NOTES

- PROVIDE DARK GREEN SOD WITH A HEALTHY VIGOROUS SYSTEM OF DENSE, THICKLY MATTED ROOTS THROUGHOUT THE SOIL OF THE SOD FOR A MINIMUM DEPTH OF 1 INCH (+/- 1/4 INCH), EXCLUDING TOP GROWTH AND THATCH.
- PROVIDE SOD THAT CONTAINS NO MORE THAN 5 PERCENT NOXIOUS WEEDS AND OTHER CROP AND WEED CONTAMINANTS.
- PROVIDE SOD FREE OF DISEASES AND HARMFUL INSECTS.
- CUT SOD IN UNIFORM PANELS OR ROLLS. BROKEN PANELS OR PANELS OR ROLLS WITH TORN OR UNEVEN ENDS WILL NOT BE ACCEPTED.
- SOD PANELS SHALL BE STRONG ENOUGH TO SUPPORT THEIR OWN WEIGHT AND RETAIN SIZE AND SHAPE WHEN SUSPENDED VERTICALLY FROM A FIRM GRASP ON THE UPPER 10 PERCENT OF THE PANEL.
- HARVEST, DELIVER AND INSTALL SOD WITHIN A 36-HOUR PERIOD. SOD NOT PLANTED WITHIN THIS TIME PERIOD MUST BE INSPECTED AND APPROVED BY THE ENGINEER PRIOR TO INSTALLATION.
- SOD THAT HAS BEEN ALLOWED TO DRY OUT BY EXPOSURE TO THE SUN AND AIR IS UNACCEPTABLE AND WILL BE CONSIDERED NONCONFORMING.



SHEET NOTES:

NO. DATE DESCRIPTION

PROFESSIONAL SEAL

REVISIONS:

THIS DRAWING FOR PRELIMINARY PURPOSES ONLY NOT FOR AS-BUILT CONSTRUCTION

ARCHITECT'S LOGO

ALTAR GROUP

ARCHITECTURE ENGINEERING

AMERCO. REAL ESTATE COMPANY

CONSTRUCTION DEPARTMENT 2727 NORTH CENTRAL AVENUE PHOENIX, ARIZONA 85004 P: (602) 263-6502

SITE ADDRESS: 510 HOBBS ROAD, LEAGUE CITY, TX 77573

SHEET CONTENTS: LANDSCAPE PLAN

745071

DRAWN: CH

CHECKED: AH

DATE: 02/21/2025

L-1