

**PLANS OF PROPOSED
HOLIDAY IN THE PARK
SPECIAL EVENT LANE CLOSURE
CITY OF LEAGUE CITY**

INDEX TO SHEETS

SHEET NO. SHEET DESCRIPTION

- COVER SHEET
- DETOUR ROUTE
- PARADE ROUTE
- 0-14 PARADE LANE CLOSURE



APPROVED BY:

[Handwritten Signature]

CITY OF LEAGUE CITY
DIRECTOR OF ENGINEERING

DATE

7-3-13

PARADE
SPECIAL EVENT



18555 TEXAS
A Tribute to Santa's Elves of
Workshop at the World's Fair

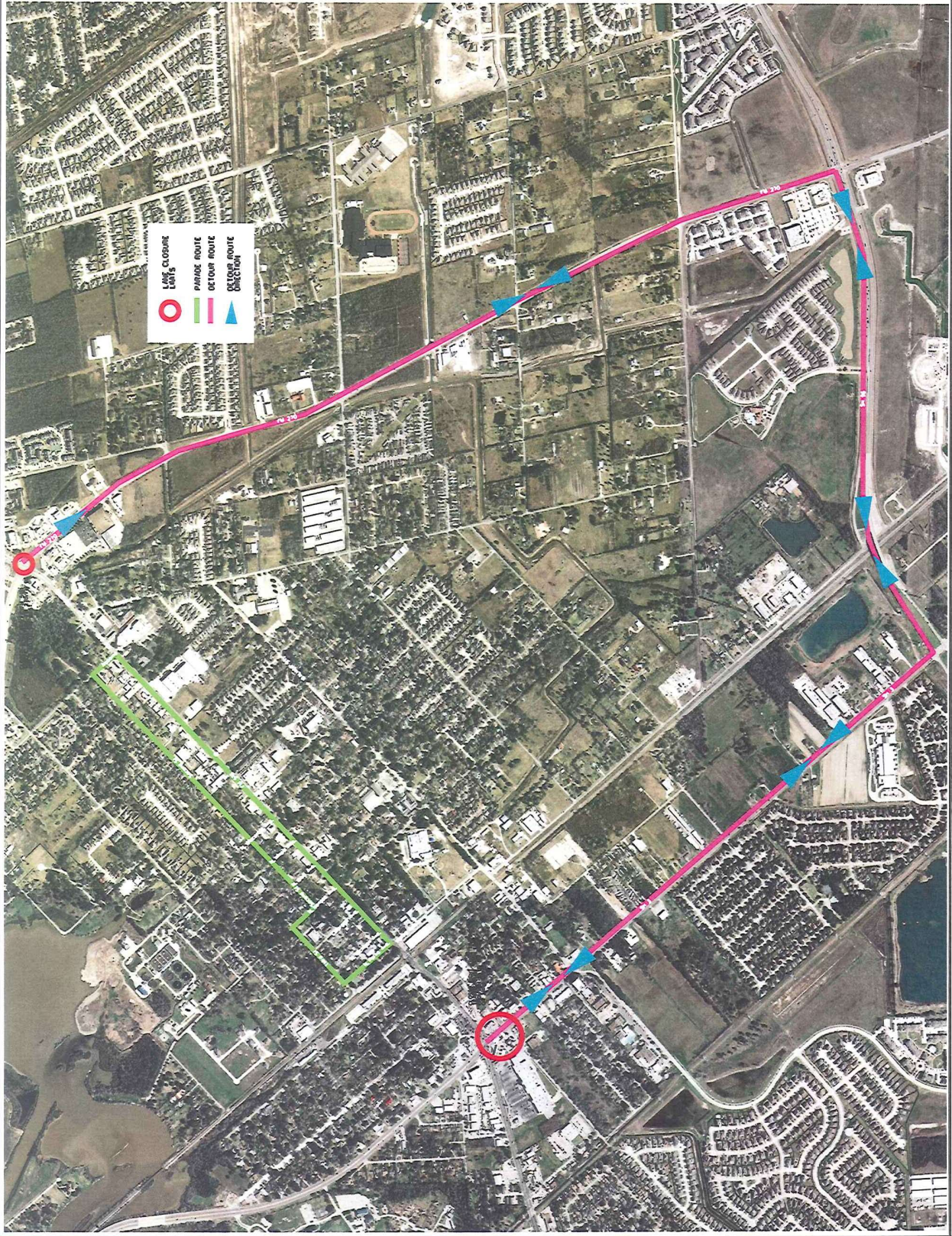


DATE	REVISION	BY

HOLIDAY IN THE PARK
PARADE AND FESTIVAL



PROJECT NO. _____
DRAWN: M.M.B. Checked: R.L.W.
SCALE: _____ DATE: 2013
SHEET: _____ OF: XX



DATE: _____
SCALE: _____
SHEET: _____

PARADE
SPECIAL EVENT



A Tribute to Santa's Elves of
League City

LANE CLOSURE
LIMITS



PARADE ROUTE



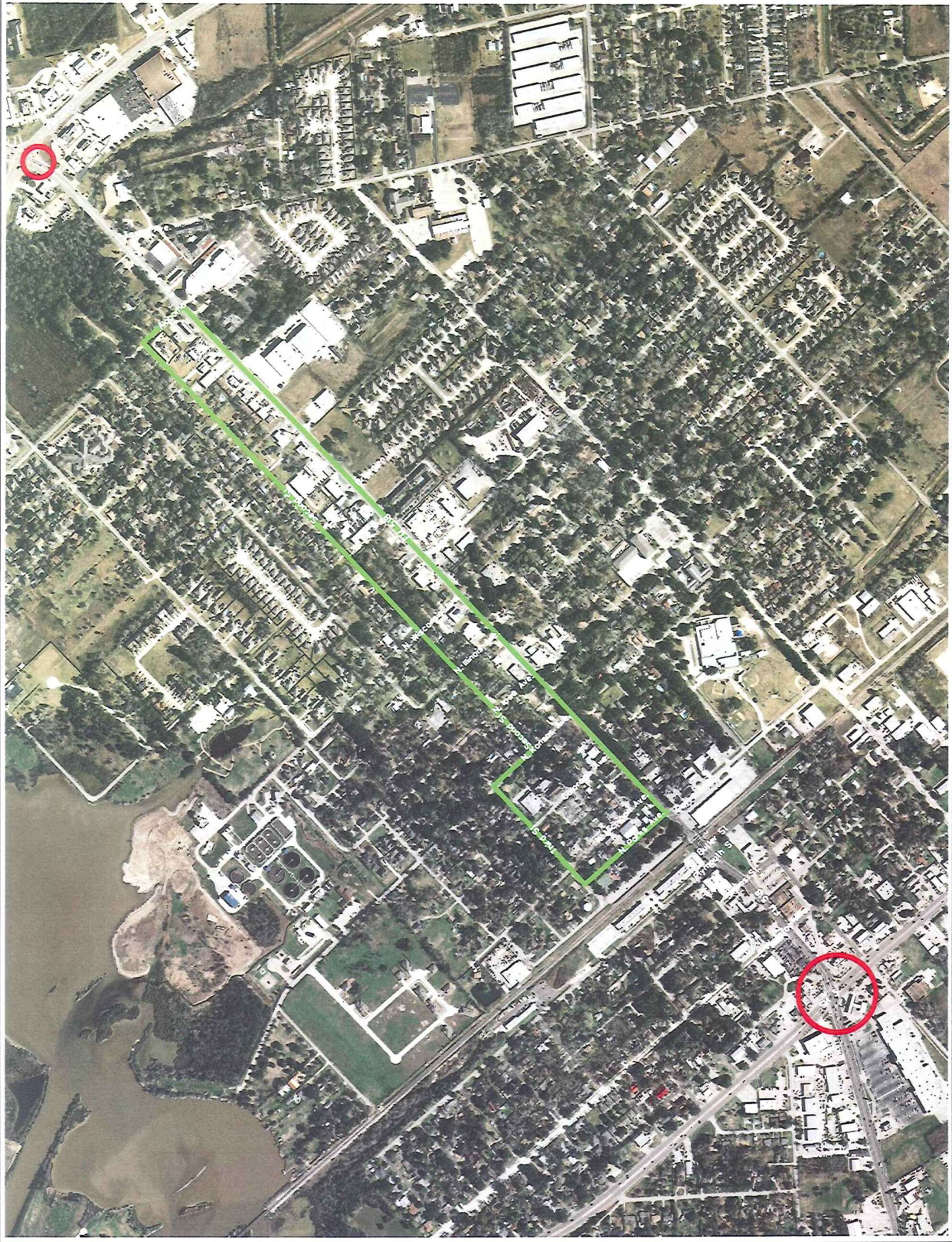
DATE	REVISION	BY

HOLIDAY IN THE PARK
PARADE AND FESTIVAL



Robert L. McWhorter
12-23-13

PROJECT NO. _____
DRAWN: M.M.B. Checked: R.W.
SCALE: _____ DATE: 2013
SHEET: _____ OF: XX



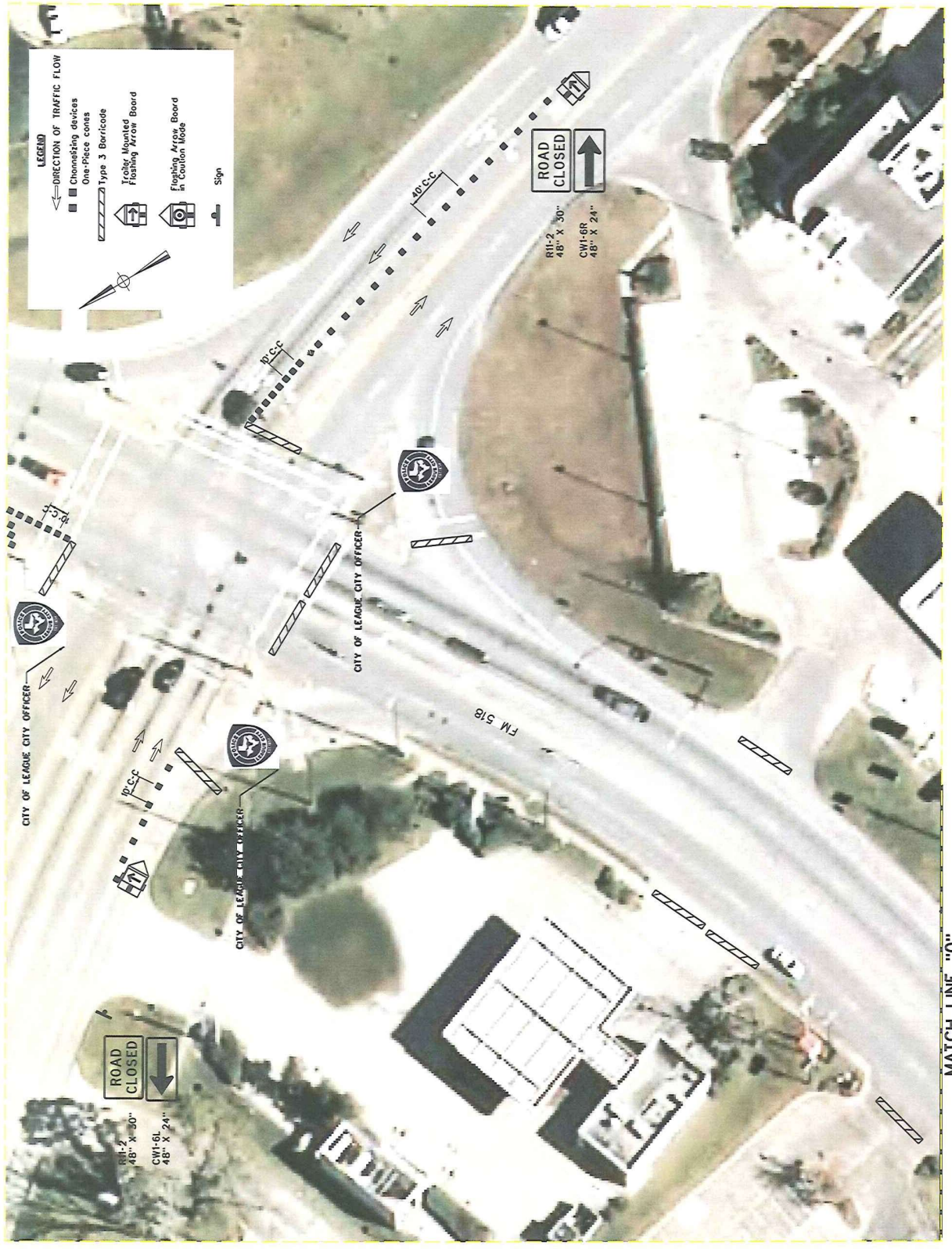
PARADE SPECIAL EVENT



HOLIDAY IN THE PARK
PARADE AND FESTIVAL



PROJECT NO.	Checkered RLW
DRAWN: M.M.B.	DATE: 2013
SCALE:	SHEET: 0
DATE:	DEL: XX



11/10/2013 11:05 AM C:\PROJECTS\1110\1110.DWG

PARADE
SPECIAL EVENT



100% LOCAL
A tribute to Santa's Elves of
League City, Texas
Workshop at the North Side



DATE	REVISION	BY

HOLIDAY IN THE PARK
PARADE AND FESTIVAL



PROJECT NO. _____
DRAWN: M.M.B. Checked: RLW
SCALE: _____ DATE: 2013
SHEET: 1 OF: XX

MATCH LINE "0"



LEGEND

- ← DIRECTION OF TRAFFIC FLOW
- Chaining devices
- One-Piece cones
- ▨ Type 3 Barricade
- Trailer Mounted Flashing Arrow Board
- Flashing Arrow Board in Cotton Road
- Sign

MATCH LINE "1"

MATCH LINE "1"



LEGEND

← DIRECTION OF TRAFFIC FLOW

□ Chaining devices

□ One-Piece cones

▨ Type 3 Barricade

↑ Traffic Masts

↑ Flashing Arrow Board

⦿ Flashing Arrow Board in Caution Mode

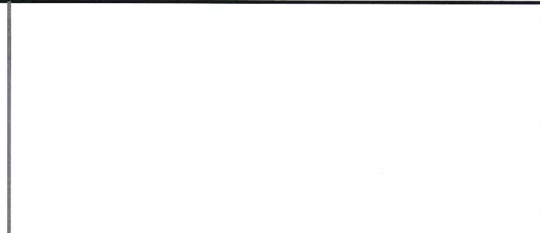
⚓ Sign

PARADE SPECIAL EVENT



10/15/2013 P.M.

A Tribute to Santa's Elves of
Workshop at the North Pole



DATE	REVISION	BY

HOLIDAY IN THE PARK
PARADE AND FESTIVAL



PROJECT NO. _____
 DRAWN BY: MMB
 SCALE: _____
 CHECKED BY: _____
 DATE: 2013
 SHEET 2
 OF XX

MATCH LINE "2"

MATCH LINE "2"



MATCH LINE "3"

LEGEND

- ← DIRECTION OF TRAFFIC FLOW
- Channeled devices
- One-Piece cones
- ▨ Type 3 Barricade
- Ⓜ Trailer Mounted Flashing Arrow Board
- Ⓜ Flashing Arrow Board in Caution Mode
- Ⓜ Sign

PARADE SPECIAL EVENT

10/25/13 10:00 AM

A Tribute to Santa's Elves of (working at the North Pole)

League City TEXAS

DATE: _____ REVISION: _____ BY: _____

HOLIDAY IN THE PARK PARADE AND FESTIVAL

PROJECT NO. _____

DRAWN: M.M.B. _____

SCALE: _____

DATE: 2013 _____

SHEET: 13 OF: XX

OF TEXAS

ROBERT L. LINDEN

79943

PROFESSIONAL ENGINEER

10-15-13

PARADE
SPECIAL EVENT



1935-1936
A tribute to Santa's Elves of
Workshop at the World's Fair



DATE	REVISION	BY

HOLIDAY IN THE PARK
PARADE AND FESTIVAL



PROJECT NO. _____
DRAWN: M.M.B. _____
SCALE: _____ DATE: 2013
SHEET: 1 OF XX

MATCH LINE "3"



LEGEND

← DIRECTION OF TRAFFIC FLOW

- Chonishing devices
- One-Piece cones
- ▨ Type 3 Barricade
- ⊠ Traffic Mounted Flashing Arrow Board
- ⊠ Flashing Arrow Board in Conical Mass
- ⊠ Sign

MATCH LINE "4"

MATCH LINE "4"



MATCH LINE "5"

PARADE
SPECIAL EVENT



DATE	REVISION	BY

HOLIDAY IN THE PARK
PARADE AND FESTIVAL



PROJECT NO. _____
 DRAWN: H.M.B. CHECKED: B.L.W.
 SCALE: _____ DATE: 2013
 SHEETS: _____ OF: XX

Handwritten notes in blue ink: *10-25-13*

MATCH LINE "5"



LEGEND

← DIRECTION OF TRAFFIC FLOW

- Chenestizing devices
- One-Piece cones
- Type 3 Barricade
- Trailer Mounted Flashing Arrow Board
- Flashing Arrow Board in Section 1009
- Sign

MATCH LINE "6"

PARADE SPECIAL EVENT



10/25/13 10:04
 2. Traffic to Santa's Elves of Workshop at the North Side



DATE	REVISION	BY

HOLIDAY IN THE PARK
 PARADE AND FESTIVAL



PROJECT NO. _____
 DRAWN: M.M.B. DATE: 2013
 SCALE: _____
 SHEET 6 OF XX

Handwritten signature and date: 10/25/13

MATCH LINE "6"



LEGEND

← DIRECTION OF TRAFFIC FLOW

- ▣ Channelizing devices
- ▣ One-Piece cones
- ▨ Type 3 Barricade
- ↑ Truck Mounted Flashing Arrow Board
- ⊞ Flashing Arrow Board in Caution Mode
- ⊞ Sign

PARADE SPECIAL EVENT

10.25.13 (13.25.13)

A Tribute to Santa's Elves of
Workshop at the North Pole



DATE	REVISION	BY

HOLIDAY IN THE PARK
PARADE AND FESTIVAL



PROJECT NO. _____

DRAWN: A.M.B. Checked: B.L.W.

SCALE: _____ DATE: 2013

SHEET: _____ OF: XX

MATCH LINE "7"

DATE: 11/20/13

PARADE
SPECIAL EVENT



DATE	REVISION	BY

HOLIDAY IN THE PARK
PARADE AND FESTIVAL



PROJECT NO. _____
DRAWN: M.M.B.
SCALE: _____
SHEET: B
OF: XX

MATCH LINE "7"



MATCH LINE "8"

LEGEND

- DIRECTION OF TRAFFIC FLOW
- Channelizing devices
- One-Piece cones
- Type 3 Barricade
- Tri-Angle Mounted Flashing Arrow Board
- Flashing Arrow Board in "Caution Mode"
- Sign

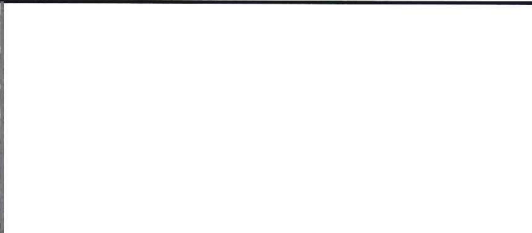
MATCH LINE "8"



LEGEND

- ← DIRECTION OF TRAFFIC FLOW
- ▣ Chicaning devices
- ▣ One-Piece cones
- ▣ Type 3 Barricade
- ▣ Trailer Mounted Flashing Arrow Board
- ▣ Flashing Arrow Board in Caution Mode
- ▣ Sign

PARADE SPECIAL EVENT



DATE	REVISION	BY

HOLIDAY IN THE PARK
PARADE AND FESTIVAL



PROJECT NO. _____
DRAWN: H.A.M.B.
SCALE: _____
SHEET: 19 OF 22

MATCH LINE "9"

PARADE
SPECIAL EVENT



TEXAS (TSP) 3. Tribute to Veterans Day at Workshop at the North Side



DATE	REVISION	BY

HOLIDAY IN THE PARK
PARADE AND FESTIVAL



PROJECT NO. _____
DRAWN: M.M.B. Checked: R.W.
SCALE: _____ DATE: 2013
SHEET NO. OF. XX

MATCH LINE "9"



- LEGEND**
- ← DIRECTION OF TRAFFIC FLOW
 - ▣ Chaining devices
 - ▣ One-Piece cones
 - ▣ Type 3 Barricade
 - ▣ Trailer Mounted Flashing Arrow Board
 - ▣ Flashing Arrow Board in Curbside Lane
 - ▣ Sign

MATCH LINE "10"

PARADE
SPECIAL EVENT



TEXAS OFFICIAL
A Tribute to Santa's Elves &
Workshop at the North Pole



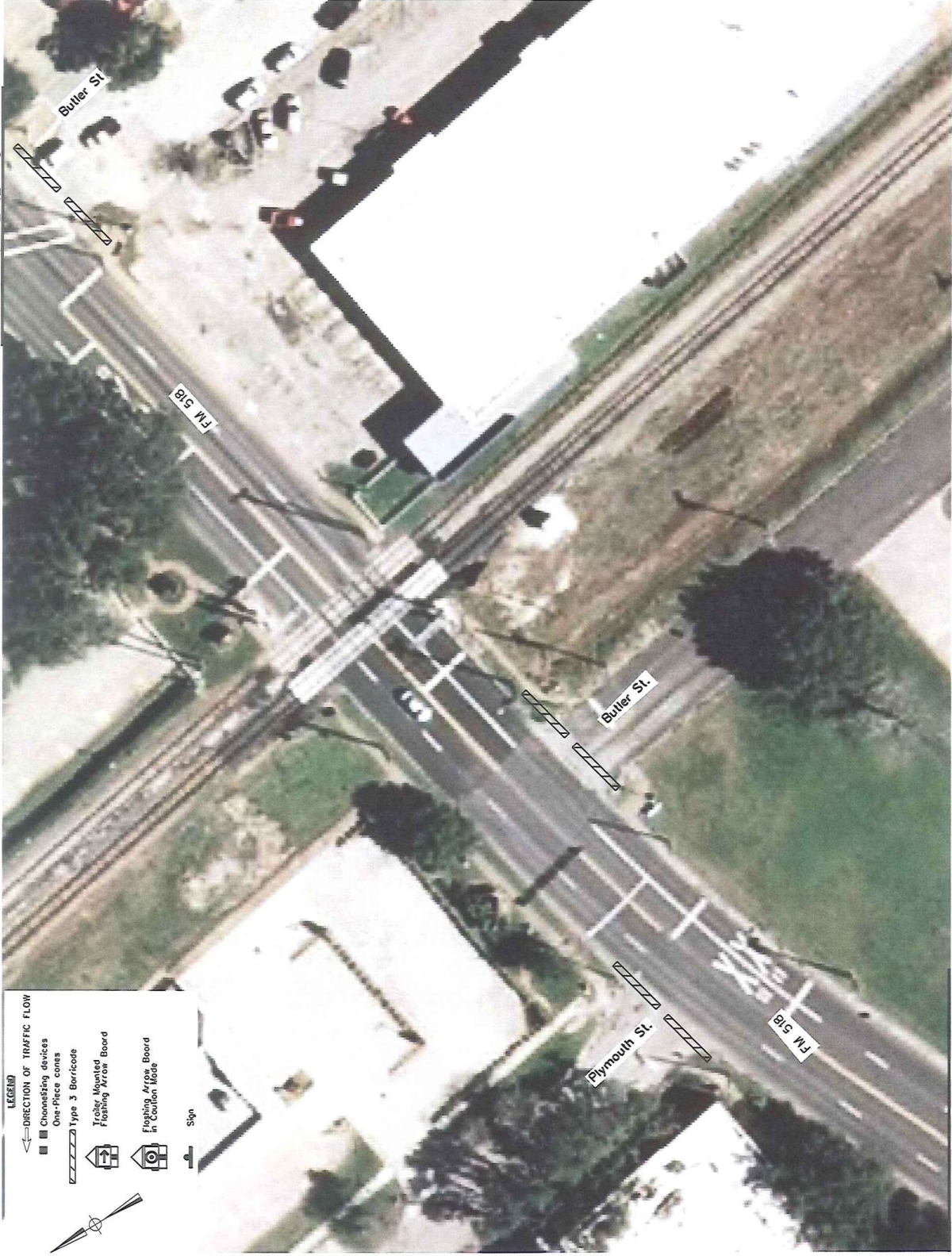
DATE	REVISION	BY

HOLIDAY IN THE PARK
PARADE AND FESTIVAL

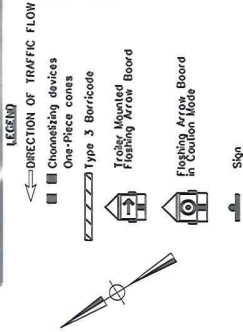


PROJECT NO.	Checked: RLW
DRAWN: MMLB	DATE: 2013
SCALE:	OF: XX
SHEET: 11	

MATCH LINE "10"



MATCH LINE "11"



DATE: 11/04/2013 09:58 AM
FILE: C:\PROJECTS\111111\111111.dwg

PARADE
SPECIAL EVENT



10055 Fm 518
A Tribute to Santa & Elves of
Workshop at the North Pole



DATE	REVISION	BY

HOLIDAY IN THE PARK
PARADE AND FESTIVAL



PROJECT NO. _____
DRAWN: M.M.B. DATE: 2013
SCALE: _____ OF: XX
SHEET 12

MATCH LINE "11"



LEGEND

← DIRECTION OF TRAFFIC FLOW

- Channeling devices
- One-Piece cones
- ▨ Type 3 Barricade
- 🚚 Trailer Mounted Flagging Array Board
- 🚚 Flagging Array Board in Custom Hoops
- 📋 Sign

MATCH LINE "12"

PARADE SPECIAL EVENT



DATE	REVISION	BY

HOLIDAY IN THE PARK
PARADE AND FESTIVAL



PROJECT NO. _____
DRAWN: MMB
SCALE: _____
CHECKED: RLW
DATE: 2013
SHEET 113
OF: XX



MATCH LINE "12"

MATCH LINE "13"

LEGEND

- ← DIRECTION OF TRAFFIC FLOW
- ▣ Chicanes
- One-Piece cones
- ▨ Type 3 Barricades
- ↑ Trailer Mounted Flashing Arrow Board
- ⬆ Flashing Arrow Board in Cotton Mode
- ⊠ Sign

PARADE SPECIAL EVENT



10/25/2013
 3. Tribute to Santa's Elves of
 Working at the North Pole

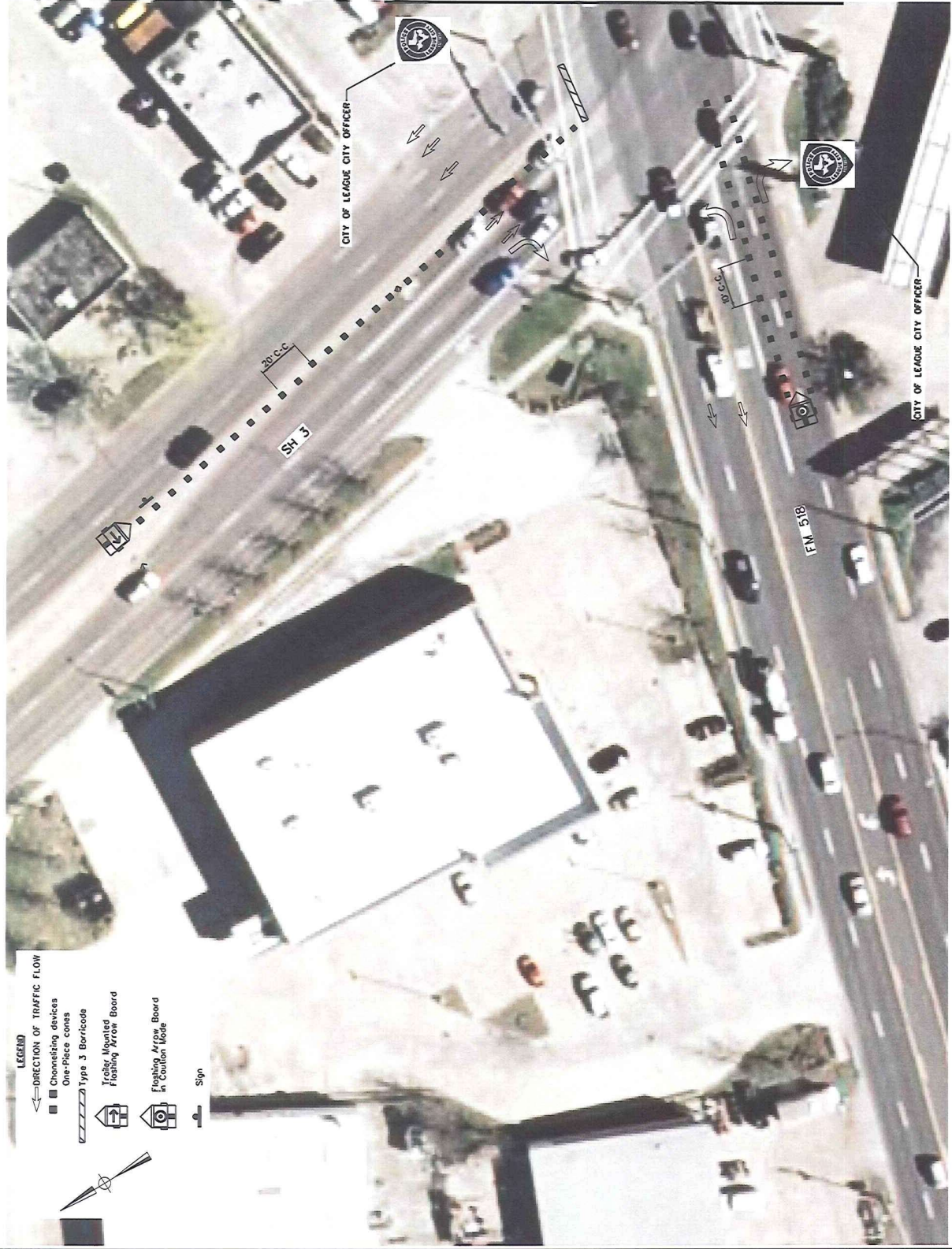


DATE	REVISION	BY

HOLIDAY IN THE PARK
 PARADE AND FESTIVAL



PROJECT NO. _____
 DRAWN: M.M.B. CHECKED: B.L.W.
 SCALE: _____ DATE: 2013
 SHEET: 11 OF XX

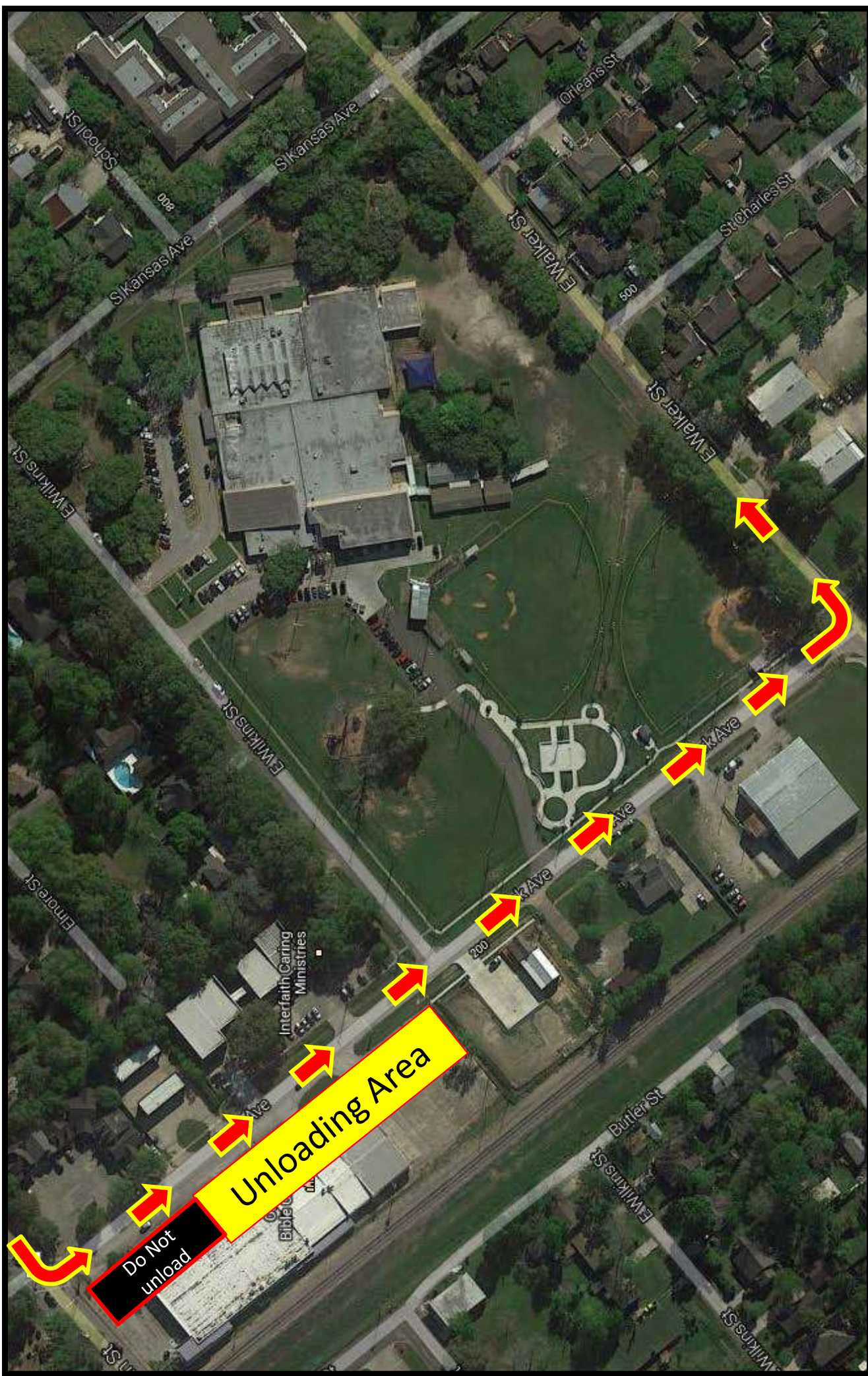


LEGEND

- ← DIRECTION OF TRAFFIC FLOW
- Channeled devices
- One-Piece cones
- ▨ Type 3 Barricade
- ⬮ Traffic Mounted Flashing Arrow Board
- ⬮ Flashing Arrow Board at Station Road
- ⬮ Sign



End Parade Route



Route to return to parking area

