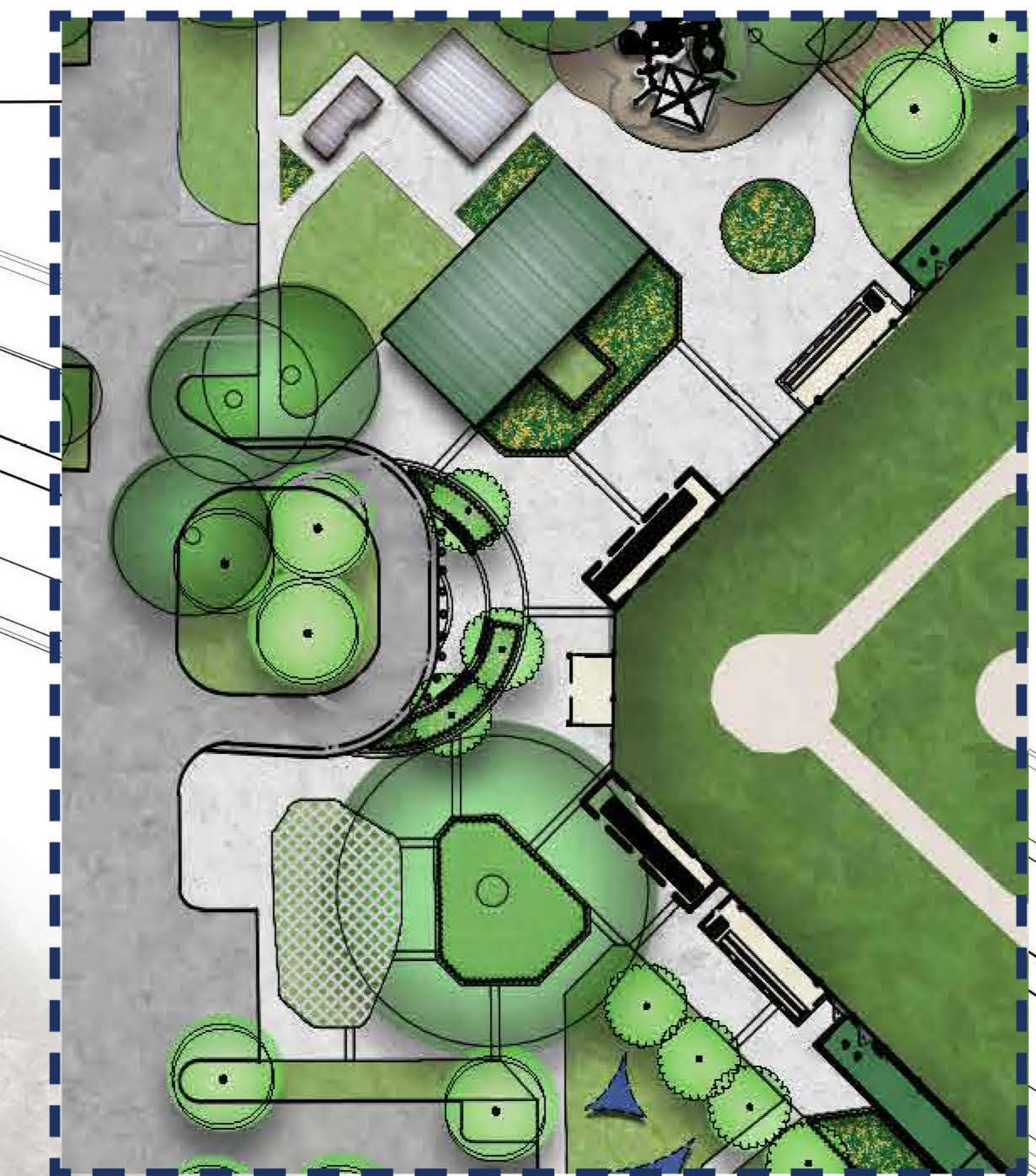


LEGEND

- (A) WIDENED PARK ENTRY
- (B) NEW PARK ENTRY SIGNAGE
- (C) INTERPRETATIVE NATURE SIGNAGE
- (D) UPDATED ISLAND W/ SEATING PODS
- (E) ENHANCED PEDESTRIAN DROP-OFF AT BASEBALL FIELD
- (F) PAVILION PLAZA
- (G) ENCLOSED 2-5 YR AND 5-12 YR PLAYGROUND
- (H) PARK PROMENADE W/ SEATING PODS
- (I) PICNIC PAVILION AT OPEN LAWN
- (J) OUTDOOR SEATING W/ SHADE
- (K) SHADE CANOPY AND COVERED SEATING @ PICKLEBALL COURTS
- (L) BASKETBALL COURT CANOPY
- (M) EXPANDED PARKING LOT W/ LIGHTING (+/- 69 SPACES)
- (N) PEDESTRIAN DROP-OFF AT SOCCER FIELD AND TRAIL HEAD
- (O) MULTI-PURPOSE SPORTS FIELD
 - 1 INT. FIELD (~105,000 SF)
 - 2 U-12 FIELDS (~45,000 SF)
- (O₂) MULTI-PURPOSE SPORTS FIELD
 - 1 U-12 FIELDS (~45,000 SF)
- (P) WALKING TRAILS (~1.5 MI)
- (Q) ENHANCED DRAINAGE SWALE
- (R) NFC FITNESS CENTER OR ADAPTIVE FITNESS
- (S) PROPOSED RESTROOM
- PROPOSED SHADE TREE, TYP.
- EXISTING TREE TO REMAIN, TYP.



These drawings and the information contained herein are for general presentation purposes only and are not intended nor shall be used for design or as construction plans. The owner reserves the right to modify or change all designs without notice to the public.