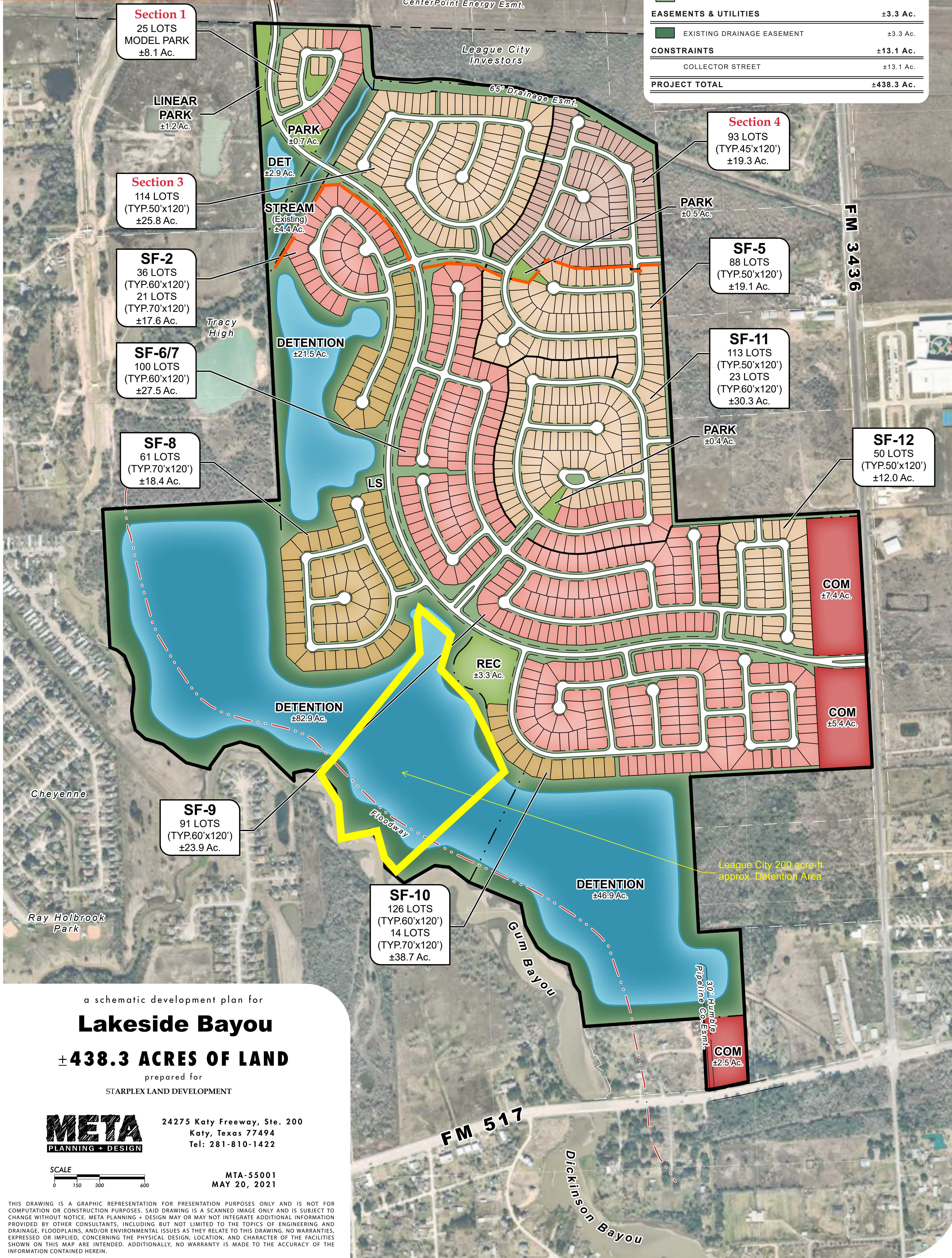




Phasing					
Phase	1	2	3	Totals	
Lot Size					Phase 1 Model Lots
45	93	0	0	93	12
50	126	88	163	377	13
60	13	136	240	389	25 Model Lots
70	0	82	14	96	
	232	306	417	955	

Phase 1 - Sections 1, 3 and 4

LAND USE & ACREAGE ANALYSIS			
LEGEND			
RESIDENTIAL			±239.7 Ac.
SF	45' X 120'	93 LOTS	10%
SF	50' X 120'	378 LOTS	40%
SF	60' X 120'	388 LOTS	40%
SF	70' X 120'	96 LOTS	10%
TOTAL		955 LOTS	
NON-RESIDENTIAL			±15.3 Ac.
COM	COMMERCIAL		±15.3 Ac.
PARKS / RECREATION / OPEN SPACE			±166.9 Ac.
PARK	REC. CENTER & PARKS		±6.1 Ac.
	DRAINAGE / DETENTION		±154.2 Ac.
	STREAM		±4.4 Ac.
	LANDSCAPE / OPEN SPACE		±2.2 Ac.
EASEMENTS & UTILITIES			±3.3 Ac.
	EXISTING DRAINAGE EASEMENT		±3.3 Ac.
CONSTRAINTS			±13.1 Ac.
	COLLECTOR STREET		±13.1 Ac.
PROJECT TOTAL			±438.3 Ac.

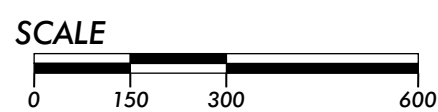


a schematic development plan for  
**Lakeside Bayou**  
**± 438.3 ACRES OF LAND**

prepared for  
STARPLEX LAND DEVELOPMENT



24275 Katy Freeway, Ste. 200  
Katy, Texas 77494  
Tel: 281-810-1422



MTA-55001  
MAY 20, 2021

THIS DRAWING IS A GRAPHIC REPRESENTATION FOR PRESENTATION PURPOSES ONLY AND IS NOT FOR COMPUTATION OR CONSTRUCTION PURPOSES. SAID DRAWING IS A SCANNED IMAGE ONLY AND IS SUBJECT TO CHANGE WITHOUT NOTICE. META PLANNING + DESIGN MAY OR MAY NOT INTEGRATE ADDITIONAL INFORMATION PROVIDED BY OTHER CONSULTANTS, INCLUDING BUT NOT LIMITED TO THE TOPICS OF ENGINEERING AND DRAINAGE, FLOODPLAINS, AND/OR ENVIRONMENTAL ISSUES AS THEY RELATE TO THIS DRAWING. NO WARRANTIES, EXPRESSED OR IMPLIED, CONCERNING THE PHYSICAL DESIGN, LOCATION, AND CHARACTER OF THE FACILITIES SHOWN ON THIS MAP ARE INTENDED. ADDITIONALLY, NO WARRANTY IS MADE TO THE ACCURACY OF THE INFORMATION CONTAINED HEREIN.