



Prepared for: WESLEY BAKER

CITY OF LEAGUE CITY

Prepared by: Cody Delaney

09/27/2024

Chastang Ford | 6200 N. Loop East Houston Texas | 770261936

2025 F-150 4x2 SuperCab 6.5' box 145" WB XL (X1K)

Price Level: 520 | Quote ID: LEAGUEX1K2

As Configured Vehicle

Code	Description	MSRP
X1K	Base Vehicle Price (X1K)	\$41,560.00
101A	Equipment Group 101A Standard <i>Includes:</i> - Engine: 2.7L V6 EcoBoost <i>Includes auto start-stop technology.</i> - Transmission: Electronic 10-Speed Automatic <i>Includes SelectShift with progressive range select and selectable drive modes: normal, ECO, sport, tow/haul, slippery and trail.</i> - 3.55 Axle Ratio - GVWR: 6,365 lbs Payload Package - Tires: 245/70R17 BSW A/S - Wheels: 17" Silver Steel - Radio: AM/FM Stereo w/6 Speakers <i>Includes auxiliary audio input jack.</i> - SYNC 4 w/Enhanced Voice Recognition <i>Includes 12" LCD capacitive touchscreen with swipe capability, wireless phone connection, cloud connected, AppLink with App catalog, 911 Assist, Apple CarPlay and Android Auto compatibility, digital owners manual and conversational voice command recognition.</i>	N/C
99P	Engine: 2.7L V6 EcoBoost <i>Includes auto start-stop technology.</i>	Included
44G	Transmission: Electronic 10-Speed Automatic <i>Includes SelectShift with progressive range select and selectable drive modes: normal, ECO, sport, low/haul, slippery and trail.</i>	Included
X19	3.55 Axle Ratio	Included
STDGV	GVWR: 6,365 lbs Payload Package	Included
STDTR	Tires: 245/70R17 BSW A/S	Included
64C	Wheels: 17" Silver Steel	Included
A	Vinyl 40/20/40 Front Seat	N/C
145WB	145" Wheelbase	STD
PAINT	Monotone Paint Application	STD
STDRD	Radio: AM/FM Stereo w/6 Speakers <i>Includes auxiliary audio input jack</i> <i>Includes:</i> - SYNC 4 w/Enhanced Voice Recognition <i>Includes 12" LCD capacitive touchscreen with swipe capability, wireless phone connection, cloud connected, AppLink with App catalog, 911 Assist, Apple CarPlay and Android Auto compatibility, digital owners manual and conversational voice command recognition.</i>	Included

Prices and content availability as shown are subject to change and should be treated as estimates only. Actual base vehicle, package and option pricing may vary from this estimate because of special local pricing, availability or pricing adjustments not reflected in the dealer's computer system. See salesperson for the most current information.

Note: Prices and content availability as shown are subject to change and should be treated as estimates only. Actual base vehicle, package and option pricing may vary from this estimate because of special local pricing, availability or pricing adjustments not reflected in the dealer's computer system. See salesperson for the most current information.

Prepared for: WESLEY BAKER

CITY OF LEAGUE CITY

Prepared by: Cody Delaney

09/27/2024



Chastang Ford | 6200 N. Loop East Houston Texas | 770261936

2025 F-150 4x2 SuperCab 6.5' box 145" WB XL (X1K)

Price Level: 520 | Quote ID: LEAGUEX1K2

As Configured Vehicle (cont'd)

Code	Description	MSRP
18B	Black Platform Running Boards	\$250.00
67T	Integrated Trailer Brake Controller	\$275.00
WARANT	Fleet Customer Powertrain Limited Warranty Requires valid FIN code. <i>Ford is increasing the 5-year 60,000-mile limited powertrain warranty to 5-years 100,000 miles. Only Fleet purchasers with a valid Fleet Identification Number (FIN code) will receive the extended warranty. When the sale is entered into the sales reporting system with a sales type fleet along with a valid FIN code, the warranty extension will automatically be added to the vehicle. The extension will stay with the vehicle even if it is subsequently sold to a non-fleet customer before the expiration. This extension applies to both gas and diesel powertrains. Dealers can check for the warranty extension on eligible fleet vehicles in OASIS. Please refer to the Warranty and Policy Manual section 3.13.00 Gas Engine Commercial Warranty. This change will also be reflected in the printed Warranty Guided distributed with the purchase of every new vehicle</i>	N/C
425	50 State Emissions System	STD
YZ_01	Oxford White	N/C
AS_02	Black w/Medium Dark Slate w/Vinyl 40/20/40 Front Seat	N/C
	TER QUOTE HOU18859	\$2,815.00
	FLOOR PLAN INTEREST	\$1,011.00
SUBTOTAL		\$45,911.00
Destination Charge		\$1,995.00
TOTAL		\$47,906.00

Prices and content availability as shown are subject to change and should be treated as estimates only. Actual base vehicle, package and option pricing may vary from this estimate because of special local pricing, availability or pricing adjustments not reflected in the dealer's computer system. See salesperson for the most current information.

Note: Prices and content availability as shown are subject to change and should be treated as estimates only. Actual base vehicle, package and option pricing may vary from this estimate because of special local pricing, availability or pricing adjustments not reflected in the dealer's computer system. See salesperson for the most current information.

Prepared for: WESLEY BAKER

CITY OF LEAGUE CITY

Prepared by: Cody Delaney

09/27/2024



Chastang Ford | 6200 N. Loop East Houston Texas | 770281936

2025 F-150 4x2 SuperCab 6.5' box 145" WB XL (X1K)

Price Level: 520 | Quote ID: LEAGUEX1K2

Pricing Summary - Single Vehicle

MSRP

Vehicle Pricing

Base Vehicle Price	\$41,560.00
Options	\$525.00
Colors	\$0.00
Upfitting	\$3,826.00
Fleet Discount	\$0.00
Fuel Charge	\$0.00
Destination Charge	\$1,995.00
Subtotal	\$47,906.00

Pre-Tax Adjustments

Code	Description	MSRP
01	DISCOUNT AND CONCESSION	-\$3,806.00
BB	BUYBOARD FEE CONTRACT# 724-23	\$0.00
Total		\$44,100.00

Customer Signature

Acceptance Date

Prices and content availability as shown are subject to change and should be treated as estimates only. Actual base vehicle, package and option pricing may vary from this estimate because of special local pricing, availability or pricing adjustments not reflected in the dealer's computer system. See salesperson for the most current information.

Note Prices and content availability as shown are subject to change and should be treated as estimates only. Actual base vehicle, package and option pricing may vary from this estimate because of special local pricing, availability or pricing adjustments not reflected in the dealer's computer system. See salesperson for the most current information.

Prepared for: **WESLEY BAKER**

CITY OF LEAGUE CITY

Prepared by: Cody Delaney

09/27/2024

Chastang Ford | 6200 N. Loop East Houston Texas | 770261936

2025 F-150 4x2 SuperCab 6.5' box 145" WB XL (X1K)

Price Level: 520 | Quote ID: LEAGUEX1K2

As Configured Vehicle

Code	Description	MSRP
X1K	Base Vehicle Price (X1K)	\$41,560.00
101A	Equipment Group 101A Standard <i>Includes:</i> - Engine: 2.7L V6 EcoBoost <i>Includes auto start-stop technology.</i> - Transmission: Electronic 10-Speed Automatic <i>Includes SelectShift with progressive range select and selectable drive modes: normal, ECO, sport, tow/haul, slippery and trail.</i> - 3.55 Axle Ratio - GVWR: 6,365 lbs Payload Package - Tires: 245/70R17 BSW A/S - Wheels: 17" Silver Steel - Radio: AM/FM Stereo w/6 Speakers <i>Includes auxiliary audio input jack.</i> - SYNC 4 w/Enhanced Voice Recognition <i>Includes 12" LCD capacitive touchscreen with swipe capability, wireless phone connection, cloud connected, AppLink with App catalog, 911 Assist, Apple CarPlay and Android Auto compatibility, digital owners manual and conversational voice command recognition.</i>	N/C
99P	Engine: 2.7L V6 EcoBoost <i>Includes auto start-stop technology.</i>	Included
44G	Transmission: Electronic 10-Speed Automatic <i>Includes SelectShift with progressive range select and selectable drive modes: normal, ECO, sport, tow/haul, slippery and trail.</i>	Included
X19	3.55 Axle Ratio	Included
STDGV	GVWR: 6,365 lbs Payload Package	Included
STDTR	Tires: 245/70R17 BSW A/S	Included
64C	Wheels: 17" Silver Steel	Included
A	Vinyl 40/20/40 Front Seat	N/C
145WB	145" Wheelbase	STD
PAINT	Monotone Paint Application	STD
STDRD	Radio: AM/FM Stereo w/6 Speakers <i>Includes auxiliary audio input jack</i> <i>Includes:</i> - SYNC 4 w/Enhanced Voice Recognition <i>Includes 12" LCD capacitive touchscreen with swipe capability, wireless phone connection, cloud connected, AppLink with App catalog, 911 Assist, Apple CarPlay and Android Auto compatibility, digital owners manual and conversational voice command recognition.</i>	Included

Prices and content availability as shown are subject to change and should be treated as estimates only. Actual base vehicle, package and option pricing may vary from this estimate because of special local pricing, availability or pricing adjustments not reflected in the dealer's computer system. See salesperson for the most current information.

Note: Prices and content availability as shown are subject to change and should be treated as estimates only. Actual base vehicle, package and option pricing may vary from this estimate because of special local pricing, availability or pricing adjustments not reflected in the dealer's computer system. See salesperson for the most current information.

Prepared for: WESLEY BAKER

CITY OF LEAGUE CITY

Prepared by: Cody Delaney

09/27/2024



Chastang Ford | 6200 N. Loop East Houston Texas | 770261936

2025 F-150 4x2 SuperCab 6.5' box 145" WB XL (X1K)

Price Level: 520 | Quote ID: LEAGUEX1K2

As Configured Vehicle (cont'd)

Code	Description	MSRP
18B	Black Platform Running Boards	\$250.00
67T	Integrated Trailer Brake Controller	\$275.00
WARANT	Fleet Customer Powertrain Limited Warranty Requires valid FIN code. <i>Ford is increasing the 5-year 60,000-mile limited powertrain warranty to 5-years 100,000 miles. Only Fleet purchasers with a valid Fleet Identification Number (FIN code) will receive the extended warranty. When the sale is entered into the sales reporting system with a sales type fleet along with a valid FIN code, the warranty extension will automatically be added to the vehicle. The extension will stay with the vehicle even if it is subsequently sold to a non-fleet customer before the expiration. This extension applies to both gas and diesel powertrains. Dealers can check for the warranty extension on eligible fleet vehicles in OASIS. Please refer to the Warranty and Policy Manual section 3.13.00 Gas Engine Commercial Warranty. This change will also be reflected in the printed Warranty Guided distributed with the purchase of every new vehicle</i>	N/C
425	50 State Emissions System	STD
YZ_01	Oxford White	N/C
AS_02	Black w/Medium Dark Slate w/Vinyl 40/20/40 Front Seat	N/C
	TER QUOTE HOU18859	\$2,815.00
	FLOOR PLAN INTEREST	\$1,011.00
SUBTOTAL		\$45,911.00
Destination Charge		\$1,995.00
TOTAL		\$47,906.00

Prices and content availability as shown are subject to change and should be treated as estimates only. Actual base vehicle, package and option pricing may vary from this estimate because of special local pricing, availability or pricing adjustments not reflected in the dealer's computer system. See salesperson for the most current information.

Note Prices and content availability as shown are subject to change and should be treated as estimates only. Actual base vehicle, package and option pricing may vary from this estimate because of special local pricing, availability or pricing adjustments not reflected in the dealer's computer system. See salesperson for the most current information.

Prepared for: **WESLEY BAKER**

CITY OF LEAGUE CITY

Prepared by: Cody Delaney

09/27/2024



Chastang Ford | 6200 N. Loop East Houston Texas | 770281936

2025 F-150 4x2 SuperCab 6.5' box 145" WB XL (X1K)

Price Level: 520 | Quote ID: LEAGUEX1K2

Pricing Summary - Single Vehicle

	MSRP
<i>Vehicle Pricing</i>	
Base Vehicle Price	\$41,560.00
Options	\$525.00
Colors	\$0.00
Upfitting	\$3,826.00
Fleet Discount	\$0.00
Fuel Charge	\$0.00
Destination Charge	\$1,995.00
Subtotal	\$47,906.00

Pre-Tax Adjustments

Code	Description	MSRP
01	DISCOUNT AND CONCESSION	-\$3,806.00
BB	BUYBOARD FEE CONTRACT# 724-23	\$0.00
Total		\$44,100.00

Customer Signature

Acceptance Date

Prices and content availability as shown are subject to change and should be treated as estimates only. Actual base vehicle, package and option pricing may vary from this estimate because of special local pricing, availability or pricing adjustments not reflected in the dealer's computer system. See salesperson for the most current information.

Note Prices and content availability as shown are subject to change and should be treated as estimates only. Actual base vehicle, package and option pricing may vary from this estimate because of special local pricing, availability or pricing adjustments not reflected in the dealer's computer system. See salesperson for the most current information.



Truck & Equipment Repair of Texas

TER Texas - HOU
 PO BOX 94
 Conroe TX 77305
 United States
 936-539-5305

Quote # HOU18859
Date 9/25/2024
Expiration Date 10/5/2024
Sales Rep Clint Ferguson Jr.
 cferguson@tertexas.com

Quote

ADDRESS

Chastang Ford
 P.O. Box 21127
 Houston TX 77226-1127
 United States

Claim #
Unit #

QTY	DESCRIPTION	UNIT PRICE	TOTAL PRICE
	Ford	F-150	
1	Gloss Black Aluminum 69" Truck Tool Box with Low Profile	600.00	600.00
4	Directional, 4 LED - Surface mount, Split Color, Amber/Blue (2) Installed on front grille (2) Installed on rear tailgate	85.00	340.00
1	Spray In Bedliner for pickup truck	300.00	300.00
1	Print + Install Graphics Chevrons	750.00	750.00
1	Shop Supplies	75.00	75.00
5	Installation of Toolbox Installation of Nerf Bars Installation of LED Lights	150.00	750.00

Thank you for the opportunity to quote your project. Please call us today for scheduling.

50% deposit required on all special order items.

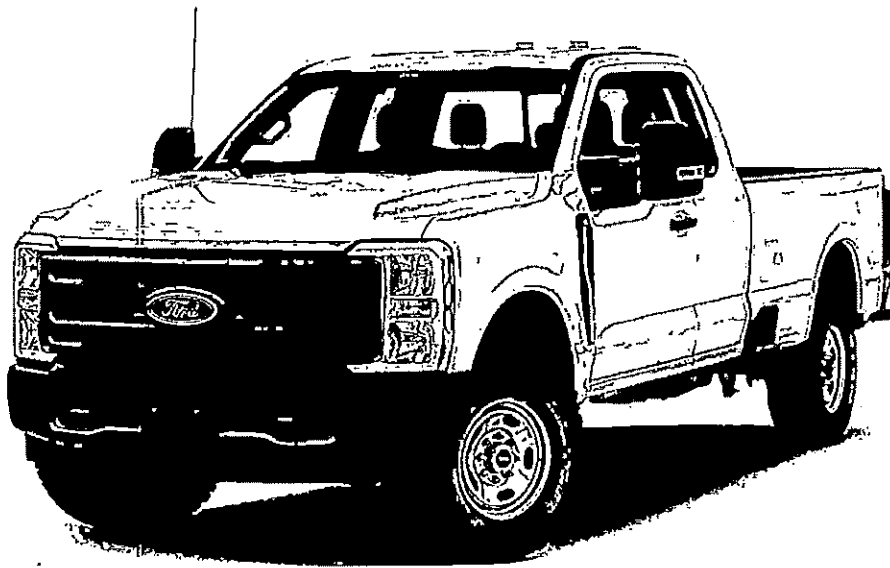
Total \$2,815.00

Accepted By _____

Accepted Date _____

Prepared for: WESLEY BAKER, CITY OF LEAGUE CITY

2024 F-250 4x2 SD Super Cab 8' box 164" WB SRW XL (X2A)
Price Level: 430



Client Proposal

Prepared by:
Cody Delaney
Office: 713-678-5000
Date: 09/27/2024



Prepared for: WESLEY BAKER

CITY OF LEAGUE CITY

Prepared by: Cody Delaney

09/27/2024



Chastang Ford | 6200 N. Loop East Houston Texas | 770261936

2024 F-250 4x2 SD Super Cab 8' box 164" WB SRW XL (X2A)

Price Level: 430

As Configured Vehicle

Code	Description	MSRP
X2A	Base Vehicle Price (X2A)	\$47,505.00
600A	Order Code 600A <i>Includes:</i> - Engine: 6.8L 2V DEVCT NA PFI V8 Gas Flex fuel. - Transmission: TorqShift-G 10-Speed Automatic Includes SelectShift and selectable drive modes: normal, eco, slippery roads, tow/haul and trail. - 3.73 Axle Ratio - GVWR: 10,000 lb Payload Package - Tires: LT245/75R17E BSW A/S Spare may not be the same as road tire. - Wheels: 17" Argent Painted Steel Includes painted hub covers/center ornaments. - HD Vinyl 40/20/40 Split Bench Seat Includes center armrest, cupholder, storage and driver's side manual lumbar. - Radio: AM/FM Stereo w/MP3 Player Includes 6 speakers. - SYNC 4 Includes 8" LCD capacitive touchscreen with swipe capability, wireless phone connection, cloud connected, AppLink with app catalog, 911 Assist, Apple CarPlay and Android Auto compatibility and digital owner's manual.	N/C
99A	Engine: 6.8L 2V DEVCT NA PFI V8 Gas Flex fuel.	Included
44F	Transmission: TorqShift-G 10-Speed Automatic Includes SelectShift and selectable drive modes: normal, eco, slippery roads, tow/haul and trail.	Included
X37	3.73 Axle Ratio	Included
STDGV	GVWR: 10,000 lb Payload Package	Included
TD8	Tires: LT245/75R17E BSW A/S Spare may not be the same as road tire.	Included
64A	Wheels: 17" Argent Painted Steel Includes painted hub covers/center ornaments.	Included
A	HD Vinyl 40/20/40 Split Bench Seat Includes center armrest, cupholder, storage and driver's side manual lumbar.	Included
164WB	164" Wheelbase	STD
PAINT	Monotone Paint Application	STD
STDRD	Radio: AM/FM Stereo w/MP3 Player Includes 6 speakers.	Included

Prices and content availability as shown are subject to change and should be treated as estimates only. Actual base vehicle, package and option pricing may vary from this estimate because of special local pricing, availability or pricing adjustments not reflected in the dealer's computer system. See salesperson for the most current information.

Note: Prices and content availability as shown are subject to change and should be treated as estimates only. Actual base vehicle, package and option pricing may vary from this estimate because of special local pricing, availability or pricing adjustments not reflected in the dealer's computer system. See salesperson for the most current information.

Prepared for: WESLEY BAKER
 CITY OF LEAGUE CITY
 Prepared by: Cody Delaney
 09/27/2024



Chastang Ford | 6200 N. Loop East Houston Texas | 770261938

2024 F-250 4x2 SD Super Cab 8' box 164" WB SRW XL (X2A)

Price Level: 430

As Configured Vehicle (cont'd)

Code	Description	MSRP
	Includes: - SYNC 4 Includes 8" LCD capacitive touchscreen with swipe capability, wireless phone connection, cloud connected, AppLink with app catalog, 911 Assist, Apple CarPlay and Android Auto compatibility and digital owner's manual.	
96V	XL Chrome Package Includes 4 pickup box tie-down plates.	\$225.00
	Includes: - Bright Chromo Hub Covers & Center Ornaments - Chrome Front Bumper - Chrome Rear Step Bumper - Halogen Fog Lamps	
67D	190 Amp Alternator	N/C
18B	Platform Running Boards	\$445.00
66S	Upfitter Switches (6) Located in overhead console.	\$165.00
153	Front License Plate Bracket Standard in states requiring 2 license plates and optional to all others.	N/C
WARANT	Fleet Customer Powertrain Limited Warranty Requires valid FIN code. Ford is increasing the 5-year 60,000-mile limited powertrain warranty to 5-years, 100,000 miles. Only Fleet purchasers with a valid Fleet Identification Number (FIN code) will receive the extended warranty. When the sale is entered into the sales reporting system with a sales type fleet along with a valid FIN code, the warranty extension will automatically be added to the vehicle. The extension will stay with the vehicle even if it is subsequently sold to a non-fleet customer before the expiration. This extension applies to both gas and diesel powertrains. Dealers can check for the warranty extension on eligible fleet vehicles in OASIS. Please refer to the Warranty and Policy Manual section 3.13.00 Gas Engine Commercial Warranty. This change will also be reflected in the printed Warranty Guided distributed with the purchase of every new vehicle.	N/C
425	50-State Emissions System	STD
Z1_01	Oxford White	N/C
AS_03	Medium Dark Slate w/HD Vinyl 40/20/40 Split Bench Seat	N/C
	HARTSTRA ANIMAL CONTROL QUOTE ID 1549	\$48,630.00
	FLOOR PLAN INTEREST 270 DAYS	\$3,563.00

Prices and content availability as shown are subject to change and should be treated as estimates only. Actual base vehicle, package and option pricing may vary from this estimate because of special local pricing, availability or pricing adjustments not reflected in the dealer's computer system. See salesperson for the most current information.

Note: Prices and content availability as shown are subject to change and should be treated as estimates only. Actual base vehicle, package and option pricing may vary from this estimate because of special local pricing, availability or pricing adjustments not reflected in the dealer's computer system. See salesperson for the most current information.

Prepared for: WESLEY BAKER
CITY OF LEAGUE CITY
Prepared by: Cody Delaney
09/27/2024



Chastang Ford | 6200 N. Loop East Houston Texas | 770261936

2024 F-250 4x2 SD Super Cab 8' box 164" WB SRW XL (X2A)

Price Level: 430

As Configured Vehicle (cont'd)

Code	Description	MSRP
	SUBTOTAL	\$100,533.00
	Destination Charge	\$1,995.00
	TOTAL	\$102,528.00

Prices and content availability as shown are subject to change and should be treated as estimates only. Actual base vehicle, package and option pricing may vary from this estimate because of special local pricing, availability or pricing adjustments not reflected in the dealer's computer system. See salesperson for the most current information.

Note: Prices and content availability as shown are subject to change and should be treated as estimates only. Actual base vehicle, package and option pricing may vary from this estimate because of special local pricing, availability or pricing adjustments not reflected in the dealer's computer system. See salesperson for the most current information.



HARTSTRA MANUFACTURING LLC
 5635 N. HWY 6
 WACO, TX 76712
 United States of America

Ph: 254-848-8318

Fax: 254-848-8314

Quote

ID: 1549 Date: 20-Aug-24

To

Quote To

NEW POTENTIAL CUSTOMER
 United States of America

Roger Howard - League City
 QUOTE NEW CUSTOMER
 United States of America

Terms		Ship Via		Salesperson
Due on Receipt		PICKED UP		001
Quantity	Description	Unit Price	Amount	
	Reference: ACU			
1	Line: 001 Expiration Date: 19-Oct-24 Part: MISC Rev: ANIMAL CONTROL BODY ea SCOPE OF WORK: REV 1.0 AUG, 2024 PROJECT: ANIMAL CONTROL BODY GENERAL: Design and Fabricate Animal Control Vehicles as per Scope DESIGN AND ENGINEERING: - Final design to be approved before construction and purchasing of materials - Full CAD drawings to be completed and maintained by Hartstra Manufacturing - Designed as per scope to include 6 Cage Compartments and 1 Rear Dead Box with integrated storage - Designed to be installed on 3/4 Ton SRW long bed Truck with Gas Engine DIMENSIONS: - 110"L x 67"H x 80"W Nominal Dimensions FRAMEWORK: - Aluminum Tubing Perimeter Framework fabricated with 4 Chassis Mounting points BODY CONSTRUCTION: - Fabricate Aluminum Tubing Body Framework Wall Sections - Utilize 1.5" x 1/8" Aluminum Square Tubing - Includes Front, Sides and Rear Wall as per drawings	\$48,630.00	\$48,630.00	



HARTSTRA MANUFACTURING LLC
 5635 N. HWY 6
 WACO, TX 76712
 United States of America

Ph: 254-848-8318

Fax: 254-848-8314

Quote

ID: 1549 Date: 20-Aug-24

To

Quote To

NEW POTENTIAL CUSTOMER
 United States of America

Roger Howard - League City
 QUOTE NEW CUSTOMER
 United States of America

Terms		Ship Via	Salesperson
Due on Receipt		PICKED UP	001
Quantity	Description	Unit Price	Amount
	<ul style="list-style-type: none"> - Includes Cutouts for compartments as per design - Includes Skirting for aesthetics - Supply and Install PolyCor Sheeting as Exterior Walls - Installed using 3M Adhesive Method - Color to be Standard Polar White - Fabricate Roof with Standard Aluminum Roof Extrusion with Custom formed corners and 1.5" Roof Bows welded in place at 24" O.C. - Roof Skin to be 20Ga Aluminum Sheeting - Supply and install Coolguard roof coating <p>BUMPER:</p> <ul style="list-style-type: none"> - 5" HD Square tubing bumper to meet FMVSS fully welded and separate from body. Bolted to chassis frame <p>COMPARTMENTS:</p> <ul style="list-style-type: none"> - Fabricate and Install 6 - Animal Kennel Compartments as per drawings - Front Dimensions to be 28"W x 38"H x 45"D Nominal - NOTE: Provisions for fuel fill location may modify compartment dimension as required on roadside - Middle compartments to be 26"W x 35"H - Includes swinging partition doors to create large transverse compartments from roadside to curbside - Includes Floors with Drains - All Aluminum Fabrication Unpainted - Includes Exterior Doors Fabricated with Aluminum Extrusion and SS Hinges with Locking Slam Hardware to access - Includes Interior Safety cage Doors fabricated from aluminum and includes catch pole openings and easy operation while securing animals. - All compartments to include rubber matting - Doors to include gas struts door holdbacks standard <ul style="list-style-type: none"> - Fabricate and Install 2 - Storage Compartments at rear - Dimensions to be 22.5"W x 42.5"H x 19"D Nominal - Includes full width upper pass through at top with rubber flooring 		



HARTSTRA MANUFACTURING LLC
 5635 N. HWY 6
 WACO, TX 76712
 United States of America

Ph: 254-848-8318

Fax: 254-848-8314

Quote

ID: 1549 Date: 20-Aug-24

To

Quote To

NEW POTENTIAL CUSTOMER
 United States of America

Roger Howard - League City
 QUOTE NEW CUSTOMER
 United States of America

Terms		Ship Via	Salesperson
Due on Receipt		PICKED UP	001
Quantity	Description	Unit Price	Amount
	<ul style="list-style-type: none"> - All Aluminum Fabrication Unpainted - Includes Exterior Doors Fabricated with Aluminum Extrusion and SS Hinges with Locking Slam Hardware to access - Fabricate and Install Dead Box Compartment at rear as per drawings <ul style="list-style-type: none"> - Dimensions to be 60"W x 24"H x 24"D Nominal Dimensions - Door to be Rear Ramp <p>ELECTRICAL and COMPONENTS:</p> <ul style="list-style-type: none"> - Standard LED DOT Lighting Package as per FMVSS <ul style="list-style-type: none"> - Additional Rear High Level Red LED lights Installed - Supply and Install 8 - Amber LED Strobe lights on body and Chassis <ul style="list-style-type: none"> - Multiple Flash Strobe Pattern with switch in Cab - Supply and Install Rear Directional Light Bar - Supply and Install Back up Alarm - Supply and Install Rear Backup Camera system from Chassis - Supply and Install Dome lights in all compartments <p>HVAC SYSTEM:</p> <ul style="list-style-type: none"> - Supply and Install HVAC System independent of Chassis System <ul style="list-style-type: none"> - Independent system to include auxiliary compressor installed under hood - 28000 BTU Cooling capacity - CFM rating on blower to be 400 - Complete Screen monitoring and control system installed in Cab Console - Air temperature is monitored separately in each compartment and programmable to set off Audible alarm if outside set parameters. <p>SLIDE OUT KENNEL:</p> <ul style="list-style-type: none"> - Fabricate and install slide out drop down kennel system in front curbside compartment - Approximate dimensions of 36"D x 21"W x 31"H - Designed to lower to the ground with 12V winch system for 		



HARTSTRA MANUFACTURING LLC
 5635 N. HWY 6
 WACO, TX 76712
 United States of America

Ph: 254-848-8318

Fax: 254-848-8314

Quote	
ID: 1549	Date: 20-Aug-24

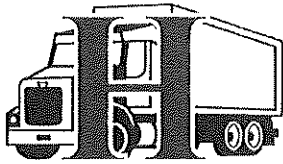
To

Quote To

NEW POTENTIAL CUSTOMER United States of America
--

Roger Howard - League City QUOTE NEW CUSTOMER United States of America
--

Terms		Ship Via		Salesperson
Due on Receipt		PICKED UP		001
Quantity	Description	Unit Price	Amount	
	<ul style="list-style-type: none"> - ease of operator use for heavier animals. - All aluminum fabrication and construction method - Includes lock in and lock out with single hand operation - Includes limit switch on winch to prevent overextension damage on winch system. <p>INSTALLATION:</p> <ul style="list-style-type: none"> - Installed on customer supplied 3/4 Ton SRW Chassis Gasoline - LED DOT lighting to meet FMVSS <p>DEAD BOX LIFTGATE:</p> <ul style="list-style-type: none"> - Supply and Install Rear dead box liftgate with 1000lbs capacity - Steel platform maximum size <p>FINAL DETAILS:</p> <ul style="list-style-type: none"> - Doors seals supplied standard - Final Cleanup, Details and Make Ready <p>DELIVERY:</p> <ul style="list-style-type: none"> - Chassis to be picked up for upfit by Hartstra Mfg included. - Driver delivery to League City, TX included - Completion date will be 150 Days ARO if chassis is available. <p>WARRANTY:</p> <ul style="list-style-type: none"> - Full 1 yr complete coverage warranty - 5 Year structural warranty included. <p>TERMS:</p> <ul style="list-style-type: none"> - Hartstra Mfg is not listed as a vendor on any Coop or Buyboard contracts Federally or at the State level. 			



HARTSTRA MANUFACTURING

HARTSTRA MANUFACTURING LLC
 5635 N. HWY 6
 WACO, TX 76712
 United States of America

Ph: 254-848-8318

Fax: 254-848-8314

Quote	
ID: 1549	Date: 20-Aug-24

To

Quote To

NEW POTENTIAL CUSTOMER United States of America
--

Roger Howard - League City QUOTE NEW CUSTOMER United States of America
--

Terms		Ship Via	Salesperson
Due on Receipt		PICKED UP	001
Quantity	Description	Unit Price	Amount
	- FOB Waco, TX - Due upon completion - Pricing does not include TT&L if required.		
		Total:	\$48,630.00

Prepared for: **WESLEY BAKER**

CITY OF LEAGUE CITY

Prepared by: Cody Delaney

09/27/2024



Chaslang Ford | 6200 N. Loop East Houston Texas | 770261936

2025 E-350 Cutaway Chassis 176" WB DRW Base (E3F)

Price Level: 515

As Configured Vehicle

Code	Description	MSRP
E3F	Base Vehicle Price (E3F)	\$38,790.00
780A	Order Code 780A <i>Includes:</i> - Engine: 7.3L V8 Premium-Rated - Transmission: 6-Speed O/D w/Tow Haul <i>Includes auxiliary cooler.</i> - GVWR: 12,500 lb Payload Package - Tires: LT225/75R16E BSW A/S <i>Hankook DynaPro HT.</i> - Wheels: 16" x 6" White Painted Steel - Dual High Back Buckets - Vinyl Bucket Seats - Radio: AM/FM Stereo w/Clock Display & 2 Speakers <i>Includes Bluetooth capability and USB Input.</i>	N/C
99N	Engine: 7.3L V8 Premium-Rated	Included
44P	Transmission: 6-Speed O/D w/Tow Haul <i>Includes auxiliary cooler.</i>	Included
XE2	4.10 Axle Ratio w/Limited-Slip	\$270.00
20C	GVWR: 12,500 lb Payload Package	Included
T68	Tires: LT225/75R16E BSW A/S <i>Hankook DynaPro HT</i>	Included
646	Wheels: 16" x 6" White Painted Steel	Included
51A	Spare Tire & Wheel <i>Includes lug nut wrench and full-size matching tire. This package does not include TPMS sensor for E-350/E-450 Cutaway</i> <i>Includes:</i> - 4 Ton Hydraulic Jack & Handle	\$240.00
211	Dual High Back Buckets	Included
A	Vinyl Bucket Seats	Included
PAINT	Monotone Paint Application	STD
176WB	176" Wheelbase	STD
153	License Plate Bracket	N/C
688	LH/RH Door Length Running Boards	\$215.00

Prices and content availability as shown are subject to change and should be treated as estimates only. Actual base vehicle, package and option pricing may vary from this estimate because of special local pricing, availability or pricing adjustments not reflected in the dealer's computer system. See salesperson for the most current information.

Note: Prices and content availability as shown are subject to change and should be treated as estimates only. Actual base vehicle, package and option pricing may vary from this estimate because of special local pricing, availability or pricing adjustments not reflected in the dealer's computer system. See salesperson for the most current information.

Prepared for: WESLEY BAKER

CITY OF LEAGUE CITY

Prepared by: Cody Delaney

09/27/2024



Chastang Ford | 6200 N. Loop East Houston Texas | 770261936

2025 E-350 Cutaway Chassis 176" WB DRW Base (E3F)

Price Level: 515

As Configured Vehicle (cont'd)

Code	Description	MSRP
54E	Manual Telescoping Trailer Tow Mirrors (54E) <i>Includes power-adjust flat lens.</i>	\$230.00
525	Cruise Control	\$240.00
60J	Instrument Panel Electronic Message Center	\$190.00
903	Power Equipment Group <i>Includes 1-touch down power driver window.</i>	\$600.00
	<i>Includes:</i> - Remote Keyless Entry - 110V Power Inverter	
587	Radio: AM/FM Stereo w/Clock Display & 2 Speakers <i>Includes Bluetooth capability and USB input.</i>	Included
634	Dual 78 Amp-Hour Batteries	\$245.00
43E	Rear View Camera Kit This kit is installed by the final stage manufacturer (upfitter). <i>Includes camera and large rear view video display that utilizes most of the mirror area</i>	\$495.00
17A	Back-Up Alarm - Electric, 102 dBA	\$125.00
85B	Tire Pressure Monitoring System (TPMS)	\$400.00
47Z	Ambulance Prep Package Not Required Required on orders not destined for ambulance use.	N/C
WARANT	Fleet Customer Powertrain Limited Warranty Requires valid FIN code.	N/C

Prices and content availability as shown are subject to change and should be treated as estimates only. Actual base vehicle, package and option pricing may vary from this estimate because of special local pricing, availability or pricing adjustments not reflected in the dealer's computer system. See salesperson for the most current information.

Note: Prices and content availability as shown are subject to change and should be treated as estimates only. Actual base vehicle, package and option pricing may vary from this estimate because of special local pricing, availability or pricing adjustments not reflected in the dealer's computer system. See salesperson for the most current information.

Prepared for: WESLEY BAKER

CITY OF LEAGUE CITY

Prepared by: Cody Delaney

09/27/2024



Chastang Ford | 6200 N. Loop East Houston Texas | 770261936

2025 E-350 Cutaway Chassis 176" WB DRW Base (E3F)

Price Level: 515

As Configured Vehicle (cont'd)

Code	Description	MSRP
<i>Ford is increasing the 5-year 60,000-mile limited powertrain warranty to 5-years, 100,000 miles. Only Fleet purchasers with a valid Fleet Identification Number (FIN code) will receive the extended warranty. When the sale is entered into the sales reporting system with a sales type fleet along with a valid FIN code, the warranty extension will automatically be added to the vehicle. The extension will stay with the vehicle even if it is subsequently sold to a non-fleet customer before the expiration. This extension applies to both gas and diesel powertrains. Dealers can check for the warranty extension on eligible fleet vehicles in OASIS. Please refer to the Warranty and Policy Manual section 3.13.00 Gas Engine Commercial Warranty. This change will also be reflected in the printed Warranty Guided distributed with the purchase of every new vehicle.</i>		
425	50 State Emission System	STD
YZ_01	Oxford White	N/C
AE_02	Medium Flint w/Vinyl Bucket Seats	N/C
	TER QUOTE HOU18866	\$23,445.00
	FLOOR PLAN INTEREST	\$3,032.00
SUBTOTAL		\$68,517.00
Destination Charge		\$1,995.00
TOTAL		\$70,512.00

Prices and content availability as shown are subject to change and should be treated as estimates only. Actual base vehicle, package and option pricing may vary from this estimate because of special local pricing, availability or pricing adjustments not reflected in the dealer's computer system. See salesperson for the most current information.

Note: Prices and content availability as shown are subject to change and should be treated as estimates only. Actual base vehicle, package and option pricing may vary from this estimate because of special local pricing, availability or pricing adjustments not reflected in the dealer's computer system. See salesperson for the most current information.

Prepared for: WESLEY BAKER

CITY OF LEAGUE CITY

Prepared by: Cody Delaney

09/27/2024



Chastang Ford | 6200 N. Loop East Houston Texas | 770261936

2025 E-350 Cutaway Chassis 176" WB DRW Base (E3F)

Price Level: 515

Pricing Summary - Single Vehicle

	MSRP
<i>Vehicle Pricing</i>	
Base Vehicle Price	\$38,790.00
Options	\$3,250.00
Colors	\$0.00
Upfitting	\$26,477.00
Fleet Discount	\$0.00
Fuel Charge	\$0.00
Destination Charge	\$1,995.00
Subtotal	\$70,512.00

Pre-Tax Adjustments

Code	Description	MSRP
BB	BUYBOARD FEE	\$0.00
Total		\$70,512.00

Customer Signature

Acceptance Date

Prices and content availability as shown are subject to change and should be treated as estimates only. Actual base vehicle, package and option pricing may vary from this estimate because of special local pricing, availability or pricing adjustments not reflected in the dealer's computer system. See salesperson for the most current information.

Note: Prices and content availability as shown are subject to change and should be treated as estimates only. Actual base vehicle, package and option pricing may vary from this estimate because of special local pricing, availability or pricing adjustments not reflected in the dealer's computer system. See salesperson for the most current information.



Truck & Equipment Repair of Texas

TER Texas - HOU
 PO BOX 94
 Conroe TX 77305
 United States
 936-539-5305

Quote # HOU18866
Date 9/26/2024
Expiration Date 10/6/2024
Sales Rep Clint Ferguson Jr.
 cferguson@tertexas.com

Quote

ADDRESS

Chastang Ford
 P.O. Box 21127
 Houston TX 77226-1127
 United States

Claim #
Unit #

VIN#	Year	MAKE	MODEL	GVW	HAIR#
	2024	Ford	E-350	120	
Item	DESCRIPTION	QTY	UNIT PRICE	AMOUNT	
NPN	Lyncoach - 20240925-011 16' L x 84" H x 96" W	1	14,115.00	14,115.00	
MAXC2-92-1650 TP41	1600lb. Capacity C2-92-1650 TP41+6" RAMPW/INSTL KIT STEEL Platform	1	2,950.00	2,950.00	
BUY405BC	Buyers Products Chrome Plated Anti-Sall Brackets 26.13x21 Inch	1	40.00	40.00	
ECCED3704AB	Directional, 4 LED - Surface mount, Split Color, Amber/Blue	4	85.00	340.00	
TERGRAPHIC	Print + Install Graphics Chevrons	1	750.00	750.00	
Shop Supplies	Shop Supplies	1	150.00	150.00	
Freight	Freight	1	1,500.00	1,500.00	
Install	Install QC Make-ready	24	150.00	3,600.00	
	FURNISH AND INSTALL 16' L X 84" H X 96" W RADIUS FRONT (.063 ALUMINUM TREAD BRIGHT) CUT AWAY COMPOSITE BODY WITHOUT SLIDING DOOR .032 SEAMLESS ROOF SKIN RIVETED AROUND PERIMETER 1" ANTI-SAG ROOF BOWS ON 24" CENTERS CLEARANCE LIGHTS - TRUCKLITE (LED) FLEX LIGHTS WITH S/T/T ON OUTERS CORNERS OF REAR ROOF RAIL				



Truck & Equipment Repair of Texas

TER Texas - HOU
 PO BOX 94
 Conroe TX 77305
 United States
 936-539-5305

Quote # HOU18866

Date 9/26/2024

Expiration Date 10/8/2024

Quote

ITEM	DESCRIPTION	QTY	UNIT PRICE	TOTAL
	INCLUDES LYNCOACH PLUG & PLAY WIRING HARNESS (MOLDED ENDS & WRAPPED WITH CONDUIT) LED DOME LIGHT W/SWITCH AT LEFT REAR SIDE .040 PRE PAINTED WHITE ALUM SIDES WITH RIVETS ON 2" CENTERS EXTRUDED ALUMINUM Z-POST ON 16" CENTERS 1/2" EXTERIOR PLYWOOD LINING ON FRONT WALL 3/8" EXTERIOR PLYWOOD LINING ON SIDE WALLS E-TRACK - FLUSH MOUNTED - SIDES ONLY CENTER MOUNTED 1 1/8" HARDWOOD FLOOR (UNDERCOATED) 3" I-BEAM CROSSMEMBERS ON 12" CENTERS (HOT DIPPED FOR CORROSION PROTECTION) 6" I-BEAM LONGITUDINALS REINFORCED ABOVE REAR WHEELS WITH 3/16" STEEL STAINLESS STEEL REAR-END (DESIGNED WITH FLUSH ENTRY) GRAB HANDLES ON REAR COMPOSITE ROLL-UP REAR DOOR WEIGHT SLIP AND CERTIFICATION *INSTALL C2-92 1600LB LIFTGATE *INSTALL 4 CORNER STROBES AMBER/BLUE *INSTALL CHEVRON ON TAILGATE			

Thank you for the opportunity to quote your project. Please call us today for scheduling

Total \$23,445.00

50% deposit required on all special order items.

Accepted By _____

Accepted Date _____

Prepared for: **WESLEY BAKER**

CITY OF LEAGUE CITY

Prepared by: Cody Delaney

10/02/2024

Chastang Ford | 6200 N. Loop East Houston Texas | 770261936

2025 Maverick FWD SuperCrew 4.5' box 121.1" WB XL (W8A)

Price Level: 525

As Configured Vehicle

Code	Description	MSRP
W8A	Base Vehicle Price (W8A)	\$26,295.00
100A	Equipment Group 100A <i>Includes:</i> - Engine: 2.5L Hybrid - Transmission: Automatic Continuous Variable (CVT) - 2.91 Axle Ratio - GVWR: 5,230 lbs - Tires: 225/65R17 A/S BSW - Wheels: 17" Steel w/Sparkle Silver Painted Cover - Front Cloth Bucket Seats <i>Includes 6-way manual adjustable driver and 4-way manual adjustable passenger, front floor console with eShifter, armrest and storage bin.</i> - Radio: AM/FM Stereo w/6 Speakers <i>Includes 2 front USB ports - 1 type A and 1 type C.</i> - SYNC 4 w/Enhanced Voice Recognition <i>Includes 13.2" LCD touch screen with swipe capability, wireless phone connection, cloud connected, AppLink with App catalog, 911 Assist, Apple CarPlay and Android Auto compatibility, digital owner's manual and conversational voice command recognition.</i> - SiriusXM w/360L	N/C
993	Engine: 2.5L Hybrid	Included
44E	Transmission: Automatic Continuous Variable (CVT)	Included
STDAX	2.91 Axle Ratio	Included
STDGV	GVWR: 5,230 lbs	Included
STDTR	Tires: 225/65R17 A/S BSW	Included
64Z	Wheels: 17" Steel w/Sparkle Silver Painted Cover	Included
9	Front Cloth Bucket Seats <i>Includes 6-way manual adjustable driver and 4-way manual adjustable passenger, front floor console with eShifter, armrest and storage bin</i>	Included
121WB	121" Wheelbase	STD
PAINT	Monotone Paint Application	STD
STDRD	Radio: AM/FM Stereo w/6 Speakers <i>Includes 2 front USB ports - 1 type A and 1 type C</i> <i>Includes:</i> - SYNC 4 w/Enhanced Voice Recognition	Included

Prices and content availability as shown are subject to change and should be treated as estimates only. Actual base vehicle, package and option pricing may vary from this estimate because of special local pricing, availability or pricing adjustments not reflected in the dealer's computer system. See salesperson for the most current information.

Note: Prices and content availability as shown are subject to change and should be treated as estimates only. Actual base vehicle, package and option pricing may vary from this estimate because of special local pricing, availability or pricing adjustments not reflected in the dealer's computer system. See salesperson for the most current information.

Prepared for: WESLEY BAKER

CITY OF LEAGUE CITY

Prepared by: Cody Delaney

10/02/2024



Chastang Ford | 6200 N. Loop East Houston Texas | 770261936

2025 Maverick FWD SuperCrew 4.5' box 121.1" WB XL (W8A)

Price Level: 525

As Configured Vehicle (cont'd)

Code	Description	MSRP
	<i>Includes 13.2" LCD touch screen with swipe capability, wireless phone connection, cloud connected, AppLink with App catalog, 911 Assist, Apple CarPlay and Android Auto compatibility, digital owner's manual and conversational voice command recognition. - SinusXM w/360L</i>	
153	Front License Plate Bracket <i>Standard in states where required by law, optional to all others</i>	N/C
425	50-State Emissions System	STD
YZ_01	Oxford White	N/C
9W_03	Black Onyx/Dark Slate w/Front Cloth Bucket Seats	N/C
	TER QUOTE HOU18859	\$2,815.00
	FLOOR PLAN INTEREST	\$700.00
SUBTOTAL		\$29,810.00
Destination Charge		\$1,595.00
TOTAL		\$31,405.00

Prices and content availability as shown are subject to change and should be treated as estimates only. Actual base vehicle, package and option pricing may vary from this estimate because of special local pricing, availability or pricing adjustments not reflected in the dealer's computer system. See salesperson for the most current information.

Note Prices and content availability as shown are subject to change and should be treated as estimates only. Actual base vehicle, package and option pricing may vary from this estimate because of special local pricing, availability or pricing adjustments not reflected in the dealer's computer system. See salesperson for the most current information.

Prepared for: **WESLEY BAKER**

CITY OF LEAGUE CITY

Prepared by: Cody Delaney

10/02/2024



Chastang Ford | 6200 N. Loop East Houston Texas | 770281938

2025 Maverick FWD SuperCrew 4.5' box 121.1" WB XL (W8A)

Price Level: 525

Pricing Summary - Single Vehicle

	MSRP
<i>Vehicle Pricing</i>	
Base Vehicle Price	\$26,295.00
Options	\$0.00
Colors	\$0.00
Upfitting	\$3,515.00
Fleet Discount	\$0.00
Fuel Charge	\$0.00
Destination Charge	\$1,595.00
Subtotal	\$31,405.00

Pre-Tax Adjustments

Code	Description	MSRP
01	DISCOUNT AND CONCESSION	-\$250.00
BB	BUYBOARD FEE CONTRACT# 724-23	\$0.00
Total		\$31,155.00

Customer Signature

Acceptance Date

Prices and content availability as shown are subject to change and should be treated as estimates only. Actual base vehicle, package and option pricing may vary from this estimate because of special local pricing, availability or pricing adjustments not reflected in the dealer's computer system. See salesperson for the most current information.

Note Prices and content availability as shown are subject to change and should be treated as estimates only. Actual base vehicle, package and option pricing may vary from this estimate because of special local pricing, availability or pricing adjustments not reflected in the dealer's computer system. See salesperson for the most current information.



Truck & Equipment Repair of Texas

TER Texas - HOU
 PO BOX 94
 Conroe TX 77305
 United States
 936-539-5305

Quote # HOU18859
Date 9/25/2024
Expiration Date 10/5/2024
Sales Rep Clint Ferguson Jr.
 cferguson@tertexas.com

Quote

ADDRESS

Chastang Ford
 P.O. Box 21127
 Houston TX 77226-1127
 United States

Claim #
Unit #

Item #	Description	Qty	Unit Price	Total Price
	Ford F-150			
UWSTBS-69-LP-BLK	Gloss Black Aluminum 69" Truck Tool Box with Low Profile	1	600.00	600.00
ECCED3704AB	Directional, 4 LED - Surface mount, Split Color, Amber/Blue (2) installed on front grille (2) installed on rear tailgate	4	85.00	340.00
TERBEDLINER-PICKUP	Spray In Bedliner for pickup truck	1	300.00	300.00
NPN	Print + Install Graphics Chevrons	1	750.00	750.00
Shop Supplies	Shop Supplies	1	75.00	75.00
Install	Installation of Toolbox Installation of Nerf Bars Installation of LED Lights	5	150.00	750.00

Thank you for the opportunity to quote your project. Please call us today for scheduling.

Total \$2,815.00

50% deposit required on all special order items.

Accepted By

Accepted Date

Prepared for: **WESLEY BAKER**

CITY OF LEAGUE CITY

Prepared by: Cody Delaney

09/27/2024



Chastang Ford | 6200 N. Loop East Houston Texas | 770261936

2025 F-150 4x2 SuperCab 6.5' box 145" WB XL (X1K)

Price Level: 520 | Quote ID: LEAGUEX1K2

As Configured Vehicle

Code	Description	MSRP
X1K	Base Vehicle Price (X1K)	\$41,560.00
101A	Equipment Group 101A Standard <i>Includes:</i> - Engine: 2.7L V6 EcoBoost <i>Includes auto start-stop technology.</i> - Transmission: Electronic 10-Speed Automatic <i>Includes SelectShift with progressive range select and selectable drive modes: normal, ECO, sport, tow/haul, slippery and trail.</i> - 3.55 Axle Ratio - GVWR: 6,365 lbs Payload Package - Tires: 245/70R17 BSW A/S - Wheels: 17" Silver Steel - Radio: AM/FM Stereo w/6 Speakers <i>Includes auxiliary audio input jack.</i> - SYNC 4 w/Enhanced Voice Recognition <i>Includes 12" LCD capacitive touchscreen with swipe capability, wireless phone connection, cloud connected, AppLink with App catalog, 911 Assist, Apple CarPlay and Android Auto compatibility, digital owners manual and conversational voice command recognition.</i>	N/C
99P	Engine: 2.7L V6 EcoBoost <i>Includes auto start-stop technology.</i>	Included
44G	Transmission: Electronic 10-Speed Automatic <i>Includes SelectShift with progressive range select and selectable drive modes: normal, ECO, sport, tow/haul slippery and trail.</i>	Included
X19	3.55 Axle Ratio	Included
STDGV	GVWR: 6,365 lbs Payload Package	Included
STDTR	Tires: 245/70R17 BSW A/S	Included
64C	Wheels: 17" Silver Steel	Included
A	Vinyl 40/20/40 Front Seat	N/C
145WB	145" Wheelbase	STD
PAINT	Monotone Paint Application	STD
STDRD	Radio: AM/FM Stereo w/6 Speakers <i>Includes auxiliary audio input jack.</i> <i>Includes:</i> - SYNC 4 w/Enhanced Voice Recognition <i>Includes 12" LCD capacitive touchscreen with swipe capability, wireless phone connection, cloud connected, AppLink with App catalog, 911 Assist, Apple CarPlay and Android Auto compatibility, digital owners manual and conversational voice command recognition.</i>	Included

Prices and content availability as shown are subject to change and should be treated as estimates only. Actual base vehicle, package and option pricing may vary from this estimate because of special local pricing, availability or pricing adjustments not reflected in the dealer's computer system. See salesperson for the most current information.

Note Prices and content availability as shown are subject to change and should be treated as estimates only. Actual base vehicle, package and option pricing may vary from this estimate because of special local pricing, availability or pricing adjustments not reflected in the dealer's computer system. See salesperson for the most current information.

Prepared for: WESLEY BAKER

CITY OF LEAGUE CITY

Prepared by: Cody Delaney

09/27/2024



Chastang Ford | 6200 N. Loop East Houston Texas | 770261936

2025 F-150 4x2 SuperCab 6.5' box 145" WB XL (X1K)

Price Level: 520 | Quote ID: LEAGUEX1K2

As Configured Vehicle (cont'd)

Code	Description	MSRP
18B	Black Platform Running Boards	\$250.00
67T	Integrated Trailer Brake Controller	\$275.00
WARANT	Fleet Customer Powertrain Limited Warranty	N/C
	Requires valid FIN code.	
	<i>Ford is increasing the 5-year 60,000-mile limited powertrain warranty to 5-years, 100,000 miles. Only Fleet purchasers with a valid Fleet Identification Number (FIN code) will receive the extended warranty. When the sale is entered into the sales reporting system with a sales type fleet along with a valid FIN code, the warranty extension will automatically be added to the vehicle. The extension will stay with the vehicle even if it is subsequently sold to a non-fleet customer before the expiration. This extension applies to both gas and diesel powertrains. Dealers can check for the warranty extension on eligible fleet vehicles in OASIS. Please refer to the Warranty and Policy Manual section 3.13.00 Gas Engine Commercial Warranty. This change will also be reflected in the printed Warranty Guided distributed with the purchase of every new vehicle.</i>	
425	50 State Emissions System	STD
YZ_01	Oxford White	N/C
AS_02	Black w/Medium Dark Slate w/Vinyl 40/20/40 Front Seat	N/C
	TER QUOTE HOU18859	\$2,815.00
	FLOOR PLAN INTEREST	\$1,011.00
SUBTOTAL		\$45,911.00
Destination Charge		\$1,995.00
TOTAL		\$47,906.00

Prices and content availability as shown are subject to change and should be treated as estimates only. Actual base vehicle, package and option pricing may vary from this estimate because of special local pricing, availability or pricing adjustments not reflected in the dealer's computer system. See salesperson for the most current information.

Note: Prices and content availability as shown are subject to change and should be treated as estimates only. Actual base vehicle, package and option pricing may vary from this estimate because of special local pricing, availability or pricing adjustments not reflected in the dealer's computer system. See salesperson for the most current information.

Prepared for: **WESLEY BAKER**

CITY OF LEAGUE CITY

Prepared by: Cody Delaney

09/27/2024



Chastang Ford | 6200 N. Loop East Houston Texas | 770261936

2025 F-150 4x2 SuperCab 6.5' box 145" WB XL (X1K)

Price Level: 520 | Quote ID: LEAGUEX1K2

Pricing Summary - Single Vehicle

	MSRP
<i>Vehicle Pricing</i>	
Base Vehicle Price	\$41,560.00
Options	\$525.00
Colors	\$0.00
Upfitting	\$3,826.00
Fleet Discount	\$0.00
Fuel Charge	\$0.00
Destination Charge	\$1,995.00
Subtotal	\$47,906.00

Pre-Tax Adjustments

Code	Description	MSRP
01	DISCOUNT AND CONCESSION	-\$3,806.00
BB	BUYBOARD FEE CONTRACT# 724-23	\$400.00
Total		\$44,500.00

Customer Signature

Acceptance Date

Prices and content availability as shown are subject to change and should be treated as estimates only. Actual base vehicle, package and option pricing may vary from this estimate because of special local pricing, availability or pricing adjustments not reflected in the dealer's computer system. See salesperson for the most current information.

Note Prices and content availability as shown are subject to change and should be treated as estimates only. Actual base vehicle, package and option pricing may vary from this estimate because of special local pricing, availability or pricing adjustments not reflected in the dealer's computer system. See salesperson for the most current information.



Truck & Equipment Repair of Texas

TER Texas - HOU
 PO BOX 94
 Conroe TX 77305
 United States
 936-539-5305

Quote

ADDRESS

Chastang Ford
 P.O. Box 21127
 Houston TX 77226-1127
 United States

Quote # HOU18859
Date 9/25/2024
Expiration Date 10/5/2024
Sales Rep Clint Ferguson Jr.
 cferguson@tertexas.com

Claim #
Unit #

Make	Year	Model	Qty	Unit Price	Total Price
Ford		F-150			
Item	Description		Qty	Unit Price	Total Price
UWSTBS-69-LP-BLK	Gloss Black Aluminum 69" Truck Tool Box with Low Profile		1	600.00	600.00
ECCED3704AB	Directional, 4 LED - Surface mount, Split Color, Amber/Blue (2) Installed on front grille (2) Installed on rear tailgate		4	85.00	340.00
TERBEDLINER-PICKUP	Spray In Bedliner for pickup truck		1	300.00	300.00
NPN	Print + Install Graphics Chevrons		1	750.00	750.00
Shop Supplies	Shop Supplies		1	75.00	75.00
Install	Installation of Toolbox Installation of Nerf Bars Installation of LED Lights		5	150.00	750.00

Thank you for the opportunity to quote your project. Please call us today for scheduling.

50% deposit required on all special order items.

Total \$2,815.00

Accepted By _____

Accepted Date _____

Prepared for: **WESLEY BAKER**

CITY OF LEAGUE CITY

Prepared by: Cody Delaney

09/27/2024



Chastang Ford | 6200 N. Loop East Houston Texas | 770261936

2025 F-150 4x2 SuperCrew Cab 5.5' box 145" WB XL (W1K)

Price Level: 520 | Quote ID: LEAGUW1K2

As Configured Vehicle

Code	Description	MSRP
W1K	Base Vehicle Price (W1K)	\$43,895.00
101A	Equipment Group 101A Standard <i>Includes</i> - Engine: 2.7L V6 EcoBoost <i>Includes auto start-stop technology.</i> - Transmission: Electronic 10-Speed Automatic <i>Includes SelectShift with progressive range select and selectable drive modes: normal, ECO, sport, tow/haul, slippery and trail.</i> - 3.55 Axle Ratio - GVWR: 6,426 lbs Payload Package - Tires: 245/70R17 BSW A/S - Wheels: 17" Silver Steel - Radio: AM/FM Stereo w/6 Speakers <i>Includes auxiliary audio input jack.</i> - SYNC 4 w/Enhanced Voice Recognition <i>Includes 12" LCD capacitive touchscreen with swipe capability, wireless phone connection, cloud connected, AppLink with App catalog, 911 Assist, Apple CarPlay and Android Auto compatibility, digital owners manual and conversational voice command recognition.</i>	N/C
99P	Engine: 2.7L V6 EcoBoost <i>Includes auto start-stop technology</i>	Included
44G	Transmission: Electronic 10-Speed Automatic <i>Includes SelectShift with progressive range select and selectable drive modes: normal, ECO, sport, tow/haul, slippery and trail</i>	Included
X19	3.55 Axle Ratio	Included
STDGV	GVWR: 6,426 lbs Payload Package	Included
STDTR	Tires: 245/70R17 BSW A/S	Included
64C	Wheels: 17" Silver Steel	Included
A	Vinyl 40/20/40 Front Seat	N/C
145WB	145" Wheelbase	STD
STDRD	Radio: AM/FM Stereo w/6 Speakers <i>Includes auxiliary audio input jack.</i> <i>Includes:</i> - SYNC 4 w/Enhanced Voice Recognition <i>Includes 12" LCD capacitive touchscreen with swipe capability, wireless phone connection, cloud connected, AppLink with App catalog, 911 Assist, Apple CarPlay and Android Auto compatibility, digital owners manual and conversational voice command recognition.</i>	Included
18B	Black Platform Running Boards	\$250.00

Prices and content availability as shown are subject to change and should be treated as estimates only. Actual base vehicle, package and option pricing may vary from this estimate because of special local pricing, availability or pricing adjustments not reflected in the dealer's computer system. See salesperson for the most current information.

Note: Prices and content availability as shown are subject to change and should be treated as estimates only. Actual base vehicle, package and option pricing may vary from this estimate because of special local pricing, availability or pricing adjustments not reflected in the dealer's computer system. See salesperson for the most current information.

Prepared for: WESLEY BAKER

CITY OF LEAGUE CITY

Prepared by: Cody Delaney

09/27/2024



Chastang Ford | 6200 N. Loop East Houston Texas | 770261936

2025 F-150 4x2 SuperCrew Cab 5.5' box 145" WB XL (W1K)

Price Level: 520 | Quote ID: LEAGUW1K2

As Configured Vehicle (cont'd)

Code	Description	MSRP
67T	Integrated Trailer Brake Controller	\$275.00
153	Front License Plate Bracket <i>Standard in states where required by law, optional to all others.</i>	N/C
PAINT	Monotone Paint Application	STD
WARANT	Fleet Customer Powertrain Limited Warranty Requires valid FIN code. <i>Ford is increasing the 5-year 60,000-mile limited powertrain warranty to 5-years, 100,000 miles. Only Fleet purchasers with a valid Fleet Identification Number (FIN code) will receive the extended warranty. When the sale is entered into the sales reporting system with a sales type fleet along with a valid FIN code, the warranty extension will automatically be added to the vehicle. The extension will stay with the vehicle even if it is subsequently sold to a non-fleet customer before the expiration. This extension applies to both gas and diesel powertrains. Dealers can check for the warranty extension on eligible fleet vehicles in OASIS. Please refer to the Warranty and Policy Manual section 3.13.00 Gas Engine Commercial Warranty. This change will also be reflected in the printed Warranty Guided distributed with the purchase of every new vehicle.</i>	N/C
425	50 State Emissions System	STD
YZ_01	Oxford White	N/C
AS_02	Black w/Medium Dark Slate w/Vinyl 40/20/40 Front Seat	N/C
	TER QUOTE HOU18859	\$2,815.00
	FLOOR PLAN INTEREST	\$1,042.00
SUBTOTAL		\$48,277.00
Destination Charge		\$1,995.00
TOTAL		\$50,272.00

Prices and content availability as shown are subject to change and should be treated as estimates only. Actual base vehicle, package and option pricing may vary from this estimate because of special local pricing, availability or pricing adjustments not reflected in the dealer's computer system. See salesperson for the most current information.

Note Prices and content availability as shown are subject to change and should be treated as estimates only. Actual base vehicle, package and option pricing may vary from this estimate because of special local pricing, availability or pricing adjustments not reflected in the dealer's computer system. See salesperson for the most current information.

Prepared for: WESLEY BAKER

CITY OF LEAGUE CITY

Prepared by: Cody Delaney

09/27/2024



Chastang Ford | 6200 N. Loop East Houston Texas | 770261936

2025 F-150 4x2 SuperCrew Cab 5.5' box 145" WB XL (W1K)

Price Level: 520 | Quote ID: LEAGUW1K2

Pricing Summary - Single Vehicle

	MSRP
<i>Vehicle Pricing</i>	
Base Vehicle Price	\$43,895.00
Options	\$525.00
Colors	\$0.00
Upfitting	\$3,857.00
Fleet Discount	\$0.00
Fuel Charge	\$0.00
Destination Charge	\$1,995.00
Subtotal	\$50,272.00

Pre-Tax Adjustments

Code	Description	MSRP
01	DISCOUNT AND CONCESSION	-\$4,277.00
BB	BUYBOARD FEE CONTRACT# 724-23	\$0.00
Total		\$45,995.00

Customer Signature

Acceptance Date

Prices and content availability as shown are subject to change and should be treated as estimates only. Actual base vehicle, package and option pricing may vary from this estimate because of special local pricing, availability or pricing adjustments not reflected in the dealer's computer system. See salesperson for the most current information.

Note: Prices and content availability as shown are subject to change and should be treated as estimates only. Actual base vehicle, package and option pricing may vary from this estimate because of special local pricing, availability or pricing adjustments not reflected in the dealer's computer system. See salesperson for the most current information.



Truck & Equipment Repair of Texas

TER Texas - HOU
 PO BOX 94
 Conroe TX 77305
 United States
 936-539-5305

Quote

ADDRESS

Chastang Ford
 P.O. Box 21127
 Houston TX 77226-1127
 United States

Quote # HOU18859
Date 9/25/2024
Expiration Date 10/5/2024
Sales Rep Clint Ferguson Jr.
 cferguson@tertexas.com

Claim #
Unit #

Item #	Description	Make	Model	Qty	Unit Price	Amount
		Ford	F-150			
UWSTBS-69-LP-BLK	Gloss Black Aluminum 69" Truck Tool Box with Low Profile			1	600.00	600.00
ECCED3704AB	Directional, 4 LED - Surface mount, Split Color, Amber/Blue (2) installed on front grille (2) installed on rear tailgate			4	85.00	340.00
TERBEDLINER-PICKUP	Spray In Bedliner for pickup truck			1	300.00	300.00
NPN	Print + Install Graphics Chevrons			1	750.00	750.00
Shop Supplies	Shop Supplies			1	75.00	75.00
Install	Installation of Toolbox Installation of Nerf Bars Installation of LED Lights			5	150.00	750.00

Thank you for the opportunity to quote your project. Please call us today for scheduling.

50% deposit required on all special order items.

Total \$2,815.00

Accepted By _____

Accepted Date _____

Prepared for: **WESLEY BAKER**

CITY OF LEAGUE CITY

Prepared by: Cody Delaney

09/27/2024

Chastang Ford | 6200 N. Loop East Houston Texas | 770261936

2025 F-150 4x4 Regular Cab 6.5' box 122" WB XL (F1L)

Price Level: 520

As Configured Vehicle

Code	Description	MSRP
F1L	Base Vehicle Price (F1L)	\$43,625.00
101A	Equipment Group 101A Standard <i>Includes:</i> - Engine: 5.0L V8 <i>Includes auto start-stop technology.</i> - Transmission: Electronic 10-Speed Automatic <i>Includes SelectShift with progressive range select and selectable drive modes: normal, ECO, sport, tow/haul, slippery, deep snow/sand and mud/rut</i> - Electronic Locking w/3.73 Axle Ratio - GVWR: 6,450 lbs Payload Package - Tires: 265/70R17 BSW A/T - Wheels: 17" Silver Steel Radio: AM/FM Stereo w/4 Speakers <i>Includes auxiliary audio input jack</i> - SYNC 4 w/Enhanced Voice Recognition <i>Includes 12" LCD capacitive touchscreen with swipe capability, wireless phone connection, cloud connected, AppLink with App catalog, 911 Assist, Apple CarPlay and Android Auto compatibility, digital owners manual and conversational voice command recognition.</i>	N/C
995	Engine: 5.0L V8 <i>Includes auto start-stop technology.</i>	Included
44G	Transmission: Electronic 10-Speed Automatic <i>Includes SelectShift with progressive range select and selectable drive modes: normal, ECO, sport, tow/haul, slippery, deep snow/sand and mud/rut.</i>	Included
XL6	Electronic Locking w/3.73 Axle Ratio	Included
STDGV	GVWR: 6,450 lbs Payload Package	Included
STDTR	Tires: 265/70R17 BSW A/T	Included
64C	Wheels: 17" Silver Steel	Included
A	Vinyl 40/20/40 Front Seat	N/C
122WB	122" Wheelbase	STD
PAINT	Monotone Paint Application	STD
STDRD	Radio: AM/FM Stereo w/4 Speakers <i>Includes auxiliary audio input jack.</i> <i>Includes:</i> - SYNC 4 w/Enhanced Voice Recognition <i>Includes 12" LCD capacitive touchscreen with swipe capability, wireless phone connection, cloud connected, AppLink with App catalog, 911 Assist, Apple CarPlay and Android Auto compatibility, digital owners manual and conversational voice command recognition.</i>	Included

Prices and content availability as shown are subject to change and should be treated as estimates only. Actual base vehicle, package and option pricing may vary from this estimate because of special local pricing, availability or pricing adjustments not reflected in the dealer's computer system. See salesperson for the most current information.

Note: Prices and content availability as shown are subject to change and should be treated as estimates only. Actual base vehicle, package and option pricing may vary from this estimate because of special local pricing, availability or pricing adjustments not reflected in the dealer's computer system. See salesperson for the most current information.

Prepared for: WESLEY BAKER

CITY OF LEAGUE CITY

Prepared by: Cody Delaney

09/27/2024



Chastang Ford | 6200 N. Loop East Houston Texas | 770261936

2025 F-150 4x4 Regular Cab 6.5' box 122" WB XL (F1L)

Price Level: 620

As Configured Vehicle (cont'd)

Code	Description	MSRP
18B	Black Platform Running Boards	\$250.00
153	Front License Plate Bracket <i>Standard in states where required by law, optional to all others</i>	N/C
WARANT	Fleet Customer Powertrain Limited Warranty Requires valid FIN code. <i>Ford is increasing the 5-year 60,000-mile limited powertrain warranty to 5-years, 100,000 miles. Only Fleet purchasers with a valid Fleet Identification Number (FIN code) will receive the extended warranty. When the sale is entered into the sales reporting system with a sales type fleet along with a valid FIN code, the warranty extension will automatically be added to the vehicle. The extension will stay with the vehicle even if it is subsequently sold to a non-fleet customer before the expiration. This extension applies to both gas and diesel powertrains. Dealers can check for the warranty extension on eligible fleet vehicles in OASIS. Please refer to the Warranty and Policy Manual section 3 13 00 Gas Engine Commercial Warranty. This change will also be reflected in the printed Warranty Guided distributed with the purchase of every new vehicle.</i>	N/C
425	50 State Emissions System	STD
YZ_01	Oxford White	N/C
AS_02	Black w/Medlum Dark Slate w/Vinyl 40/20/40 Front Seat	N/C
	TER QUOTE HOU18859	\$2,815.00
	FLOOR PLAN INTEREST	\$1,083.00
SUBTOTAL		\$47,773.00
Destination Charge		\$1,995.00
TOTAL		\$49,768.00

Prices and content availability as shown are subject to change and should be treated as estimates only. Actual base vehicle, package and option pricing may vary from this estimate because of special local pricing, availability or pricing adjustments not reflected in the dealer's computer system. See salesperson for the most current information.

Note: Prices and content availability as shown are subject to change and should be treated as estimates only. Actual base vehicle, package and option pricing may vary from this estimate because of special local pricing, availability or pricing adjustments not reflected in the dealer's computer system. See salesperson for the most current information.

Prepared for: **WESLEY BAKER**

CITY OF LEAGUE CITY

Prepared by: Cody Delaney

09/27/2024



Chastang Ford | 6200 N. Loop East Houston Texas | 770261936

2025 F-150 4x4 Regular Cab 6.5' box 122" WB XL (F1L)

Price Level: 520

Pricing Summary - Single Vehicle

	MSRP
<i>Vehicle Pricing</i>	
Base Vehicle Price	\$43,625.00
Options	\$250.00
Colors	\$0.00
Upfitting	\$3,898.00
Fleet Discount	\$0.00
Fuel Charge	\$0.00
Destination Charge	\$1,995.00
Subtotal	\$49,768.00

Pre-Tax Adjustments

Code	Description	MSRP
01	DISCOUNT AND CONCESSION	-\$2,768.00
	BUYBOARD FEE CONTRACT# 724-23	\$0.00
Total		\$47,000.00

Customer Signature

Acceptance Date

Prices and content availability as shown are subject to change and should be treated as estimates only. Actual base vehicle, package and option pricing may vary from this estimate because of special local pricing, availability or pricing adjustments not reflected in the dealer's computer system. See salesperson for the most current information.

Note Prices and content availability as shown are subject to change and should be treated as estimates only. Actual base vehicle, package and option pricing may vary from this estimate because of special local pricing, availability or pricing adjustments not reflected in the dealer's computer system. See salesperson for the most current information.



Truck & Equipment Repair of Texas

TER Texas - HOU
 PO BOX 94
 Conroe TX 77305
 United States
 936-539-5305

Quote # HOU18859
Date 9/26/2024
Expiration Date 10/5/2024
Sales Rep Clint Ferguson Jr.
 cferguson@tertexas.com

Quote

ADDRESS

Chastang Ford
 P.O. Box 21127
 Houston TX 77226-1127
 United States

Claim #
Unit #

QTY	Part	Make	Model	QTY	Price	Total
		Ford	F-150			
Item	DESCRIPTION	QTY	Unit Price	AMOUNT		
UWSTBS-69-LP-BLK	Gloss Black Aluminum 69" Truck Tool Box with Low Profile	1	600.00	600.00		
ECCED3704AB	Directional, 4 LED - Surface mount, Split Color, Amber/Blue (2) Installed on front grille (2) Installed on rear tailgate	4	85.00	340.00		
TERBEDLINER-PICKUP	Spray In Bedliner for pickup truck	1	300.00	300.00		
NPN	Print + Install Graphics Chevrons	1	750.00	750.00		
Shop Supplies	Shop Supplies	1	75.00	75.00		
Install	Installation of Toolbox Installation of Nerf Bars Installation of LED Lights	5	150.00	750.00		

Thank you for the opportunity to quote your project. Please call us today for scheduling.

50% deposit required on all special order items.

Total \$2,815.00

Accepted By

Accepted Date

Prepared for: **WESLEY BAKER**

CITY OF LEAGUE CITY

Prepared by: Cody Delaney

09/27/2024

Chastang Ford | 6200 N. Loop East Houston Texas | 770261936

2025 F-150 4x4 SuperCrew Cab 5.5' box 145" WB XL (W1L)

Price Level: 520 | Quote ID: LEAGUEW1L3

As Configured Vehicle

Code	Description	MSRP
W1L	Base Vehicle Price (W1L)	\$47,780.00
101A	Equipment Group 101A Standard <i>Includes:</i> - Transmission: Electronic 10-Speed Automatic Includes SelectShift with progressive range select and selectable drive modes: normal, ECO, sport, tow/haul, slippery, deep snow/sand and mud/rut - Tires: 265/70R17 BSW A/T - Wheels: 17" Silver Steel - Radio: AM/FM Stereo w/6 Speakers Includes auxiliary audio input jack. - SYNC 4 w/Enhanced Voice Recognition Includes 12" LCD capacitive touchscreen with swipe capability, wireless phone connection, cloud connected, AppLink with App catalog, 911 Assist, Apple CarPlay and Android Auto compatibility, digital owners manual and conversational voice command recognition.	N/C
998	Engine: 3.5L V6 EcoBoost <i>Includes auto start-stop technology.</i> <i>Includes:</i> - GVWR: 7,100 lbs Payload Package	\$1,660.00
44G	Transmission: Electronic 10-Speed Automatic <i>Includes SelectShift with progressive range select and selectable drive modes: normal, ECO, sport, tow/haul, slippery, deep snow/sand and mud/rut.</i>	Included
XL9	Electronic Locking w/3.55 Axle Ratio	Included
NONGV1	GVWR: 7,100 lbs Payload Package	Included
STDTR	Tires: 265/70R17 BSW A/T	Included
64C	Wheels: 17" Silver Steel	Included
A	Vinyl 40/20/40 Front Seat	N/C
145WB	145" Wheelbase	STD
STDRD	Radio: AM/FM Stereo w/6 Speakers <i>Includes auxiliary audio input jack.</i> <i>Includes:</i> - SYNC 4 w/Enhanced Voice Recognition Includes 12" LCD capacitive touchscreen with swipe capability, wireless phone connection, cloud connected, AppLink with App catalog, 911 Assist, Apple CarPlay and Android Auto compatibility, digital owners manual and conversational voice command recognition.	Included
53T	Tow/Haul Package <i>Includes:</i>	\$785.00

Prices and content availability as shown are subject to change and should be treated as estimates only. Actual base vehicle, package and option pricing may vary from this estimate because of special local pricing, availability or pricing adjustments not reflected in the dealer's computer system. See salesperson for the most current information.

Note: Prices and content availability as shown are subject to change and should be treated as estimates only. Actual base vehicle, package and option pricing may vary from this estimate because of special local pricing, availability or pricing adjustments not reflected in the dealer's computer system. See salesperson for the most current information.

Prepared for: WESLEY BAKER

CITY OF LEAGUE CITY

Prepared by: Cody Delaney

09/27/2024



Chastang Ford | 6200 N. Loop East Houston Texas | 770261936

2025 F-150 4x4 SuperCrew Cab 5.5' box 145" WB XL (W1L)

Price Level: 520 | Quote ID: LEAGUEW1L3

As Configured Vehicle (cont'd)

Code	Description	MSRP
	- Integrated Trailer Brake Controller - Electronic Locking w/3.55 Axle Ratio	
18B	Black Platform Running Boards	\$250.00
67T	Integrated Trailer Brake Controller	Included
153	Front License Plate Bracket <i>Standard in states where required by law, optional to all others</i>	N/C
PAINT	Monotone Paint Application	STD
WARANT	Fleet Customer Powertrain Limited Warranty Requires valid FIN code. <i>Ford is increasing the 5-year 60,000-mile limited powertrain warranty to 5-years, 100,000 miles. Only Fleet purchasers with a valid Fleet Identification Number (FIN code) will receive the extended warranty. When the sale is entered into the sales reporting system with a sales type fleet along with a valid FIN code, the warranty extension will automatically be added to the vehicle. The extension will stay with the vehicle even if it is subsequently sold to a non-fleet customer before the expiration. This extension applies to both gas and diesel powertrains. Dealers can check for the warranty extension on eligible fleet vehicles in OASIS. Please refer to the Warranty and Policy Manual section 3.13.00 Gas Engine Commercial Warranty. This change will also be reflected in the printed Warranty Guided distributed with the purchase of every new vehicle.</i>	N/C
425	50 State Emissions System	STD
YZ_01	Oxford White	N/C
AS_02	Black w/Medium Dark Slate w/Vinyl 40/20/40 Front Seat	N/C
	TER QUOTE HOU18859	\$2,815.00
	FLOOR PLAN INTEREST	\$1,188.00
SUBTOTAL		\$54,478.00
Destination Charge		\$1,995.00
TOTAL		\$56,473.00

Prices and content availability as shown are subject to change and should be treated as estimates only. Actual base vehicle, package and option pricing may vary from this estimate because of special local pricing availability or pricing adjustments not reflected in the dealer's computer system. See salesperson for the most current information.

Note: Prices and content availability as shown are subject to change and should be treated as estimates only. Actual base vehicle, package and option pricing may vary from this estimate because of special local pricing, availability or pricing adjustments not reflected in the dealer's computer system. See salesperson for the most current information.

Prepared for: **WESLEY BAKER**

CITY OF LEAGUE CITY

Prepared by: Cody Delaney

09/27/2024



Chastang Ford | 6200 N. Loop East Houston Texas | 770261936

2025 F-150 4x4 SuperCrew Cab 5.5' box 145" WB XL (W1L)

Price Level: 520 | Quote ID: LEAGUEW1L3

Pricing Summary - Single Vehicle

	MSRP
<i>Vehicle Pricing</i>	
Base Vehicle Price	\$47,780.00
Options	\$2,695.00
Colors	\$0.00
Upfitting	\$4,003.00
Fleet Discount	\$0.00
Fuel Charge	\$0.00
Destination Charge	\$1,995.00
Subtotal	\$56,473.00

Pre-Tax Adjustments

Code	Description	MSRP
01	DISCOUNT AND CONCESSION	-\$4,977.00
BB	BUYBOARD FEE CONTRACT# 724-23	\$0.00
Total		\$51,496.00

Customer Signature

Acceptance Date

Prices and content availability as shown are subject to change and should be treated as estimates only. Actual base vehicle, package and option pricing may vary from this estimate because of special local pricing, availability or pricing adjustments not reflected in the dealer's computer system. See salesperson for the most current information.

Note: Prices and content availability as shown are subject to change and should be treated as estimates only. Actual base vehicle, package and option pricing may vary from this estimate because of special local pricing, availability or pricing adjustments not reflected in the dealer's computer system. See salesperson for the most current information.

Prepared for: **WESLEY BAKER**

CITY OF LEAGUE CITY

Prepared by: Cody Delaney

09/27/2024

Chastang Ford | 6200 N. Loop East Houston Texas | 770261936



2024 F-450 Chassis 4x4 SD Crew Cab 203" WB DRW XL (W4H)

Price Level: 430

As Configured Vehicle

Code	Description	MSRP
W4H	Base Vehicle Price (W4H)	\$59,265.00
650A	Order Code 650A <i>Includes:</i> - Engine: 7.3L 2V DEVCT NA PFI V8 Gas - Transmission: TorqShift 10-Speed Automatic 10R140 with neutral idle. Includes SelectShift and selectable drive modes: normal, tow/haul, eco, slippery roads and off-road - GVWR: 16,500 lb Payload Package - Tires: 225/70Rx19.5G BSW A/P - Wheels: 19.5" x 6" Argent Painted Steel Hub covers/center ornaments not included HD Vinyl 40/20/40 Split Bench Seat Includes center armrest, cupholder, storage, 2-way adjustable driver/passenger headrests and driver's side manual lumbar. - Radio: AM/FM Stereo w/MP3 Player Includes 6 speakers. - SYNC 4 Communications & Entertainment System Includes enhanced voice recognition, 911 Assist, 8" LCD center stack screen, AppLink, 1 smart-charging USB port and trailer brake controller	N/C
99N	Engine: 7.3L 2V DEVCT NA PFI V8 Gas	Included
44G	Transmission: TorqShift 10-Speed Automatic 10R140 with neutral idle. Includes SelectShift and selectable drive modes: normal, tow/haul, eco, slippery roads and off-road.	Included
X8L	Limited Slip w/4.88 Axle Ratio	\$395.00
STDGV	GVWR: 16,500 lb Payload Package	Included
TGJ	Tires: 225/70Rx19.5G BSW A/P	Included
64Z	Wheels: 19.5" x 6" Argent Painted Steel Hub covers/center ornaments not included	Included
512	Spare Tire & Wheel Required in Rhode Island. <i>Excludes carrier</i> <i>Includes:</i> - 6-Ton Hydraulic Jack	\$350.00
A	HD Vinyl 40/20/40 Split Bench Seat <i>Includes center armrest, cupholder, storage, 2-way adjustable driver/passenger headrests and driver's side manual lumbar.</i>	Included

Prices and content availability as shown are subject to change and should be treated as estimates only. Actual base vehicle, package and option pricing may vary from this estimate because of special local pricing, availability or pricing adjustments not reflected in the dealer's computer system. See salesperson for the most current information.

Note: Prices and content availability as shown are subject to change and should be treated as estimates only. Actual base vehicle, package and option pricing may vary from this estimate because of special local pricing, availability or pricing adjustments not reflected in the dealer's computer system. See salesperson for the most current information.

Prepared for: **WESLEY BAKER**

CITY OF LEAGUE CITY

Prepared by: Cody Delaney

09/27/2024



Chaslang Ford | 6200 N. Loop East Houston Texas | 770261936

2024 F-450 Chassis 4x4 SD Crew Cab 203" WB DRW XL (W4H)

Price Level: 430

As Configured Vehicle (cont'd)

Code	Description	MSRP
PAINT	Monotone Paint Application	STD
203WB	203" Wheelbase	STD
STDRD	Radio: AM/FM Stereo w/MP3 Player <i>Includes 6 speakers.</i> <i>Includes</i> <i>- SYNC 4 Communications & Entertainment System</i> <i>Includes enhanced voice recognition, 911 Assist, 8" LCD center stack screen, AppLink, 1 smart-charging USB port and trailer brake controller.</i>	Included
61J	6-Ton Hydraulic Jack	Included
86M	Dual 68 AH/65 AGM Battery	\$210.00
67B	410 Amp Dual Alternators <i>Includes 250 Amp + 160 Amp.</i>	\$115.00
18B	Platform Running Boards	\$445.00
WARANT	Fleet Customer Powertrain Limited Warranty Requires valid FIN code. <i>Ford is increasing the 5-year 60,000-mile limited powertrain warranty to 5-years, 100,000 miles. Only Fleet purchasers with a valid Fleet Identification Number (FIN code) will receive the extended warranty. When the sale is entered into the sales reporting system with a sales type fleet along with a valid FIN code, the warranty extension will automatically be added to the vehicle. The extension will stay with the vehicle even if it is subsequently sold to a non-fleet customer before the expiration. This extension applies to both gas and diesel powertrains. Dealers can check for the warranty extension on eligible fleet vehicles in OASIS. Please refer to the Warranty and Policy Manual section 3.13.00 Gas Engine Commercial Warranty. This change will also be reflected in the printed Warranty Guided distributed with the purchase of every new vehicle.</i>	N/C
425	50-State Emissions System	STD
Z1_01	Oxford White	N/C
AS_03	Medium Dark Slate w/HD Vinyl 40/20/40 Split Bench Seat	N/C
	TER QUOTE HOU18868	\$22,730.00
	FLOOR PLAN INTEREST	\$2,118.00
SUBTOTAL		\$85,628.00

Prices and content availability as shown are subject to change and should be treated as estimates only. Actual base vehicle, package and option pricing may vary from this estimate because of special local pricing, availability or pricing adjustments not reflected in the dealer's computer system. See salesperson for the most current information.

Note: Prices and content availability as shown are subject to change and should be treated as estimates only. Actual base vehicle, package and option pricing may vary from this estimate because of special local pricing, availability or pricing adjustments not reflected in the dealer's computer system. See salesperson for the most current information.

Prepared for: **WESLEY BAKER**

CITY OF LEAGUE CITY

Prepared by: Cody Delaney

09/27/2024



Chastang Ford | 6200 N. Loop East Houston Texas | 770261936

2024 F-450 Chassis 4x4 SD Crew Cab 203" WB DRW XL (W4H)

Price Level: 430

As Configured Vehicle (cont'd)

Code	Description	MSRP
	Destination Charge	\$1,995.00
TOTAL		\$87,623.00

Prices and content availability as shown are subject to change and should be treated as estimates only. Actual base vehicle, package and option pricing may vary from this estimate because of special local pricing, availability or pricing adjustments not reflected in the dealer's computer system. See salesperson for the most current information.

Note: Prices and content availability as shown are subject to change and should be treated as estimates only. Actual base vehicle, package and option pricing may vary from this estimate because of special local pricing, availability or pricing adjustments not reflected in the dealer's computer system. See salesperson for the most current information.

Prepared for: **WESLEY BAKER**

CITY OF LEAGUE CITY

Prepared by: Cody Delaney

09/27/2024



Chastang Ford | 6200 N. Loop East Houston Texas | 770261936

2024 F-450 Chassis 4x4 SD Crew Cab 203" WB DRW XL (W4H)

Price Level: 430

Pricing Summary - Single Vehicle

	MSRP
<i>Vehicle Pricing</i>	
Base Vehicle Price	\$59,265.00
Options	\$1,515.00
Colors	\$0.00
Upfitting	\$24,848.00
Fleet Discount	\$0.00
Fuel Charge	\$0.00
Destination Charge	\$1,995.00
Subtotal	\$87,623.00

Pre-Tax Adjustments

Code	Description	MSRP
25 MY	2025 MODEL YEAR PRICE INCREASE	\$2,500.00
01	DISCOUNT AND CONCESSION	-\$2,168.00
BB	BUYBOARD FEE CONTRACT# 724-23	\$0.00
Total		\$87,955.00

Customer Signature

Acceptance Date

Prices and content availability as shown are subject to change and should be treated as estimates only. Actual base vehicle, package and option pricing may vary from this estimate because of special local pricing, availability or pricing adjustments not reflected in the dealer's computer system. See salesperson for the most current information.

Note Prices and content availability as shown are subject to change and should be treated as estimates only. Actual base vehicle, package and option pricing may vary from this estimate because of special local pricing, availability or pricing adjustments not reflected in the dealer's computer system. See salesperson for the most current information.



Truck & Equipment Repair of Texas

TER Texas - HOU
 PO BOX 94
 Conroe TX 77305
 United States
 936-539-5305

Quote

ADDRESS

Chastang Ford
 P.O. Box 21127
 Houston TX 77226-1127
 United States

Quote # HOU18868
Date 9/26/2024
Expiration Date 10/6/2024
Sales Rep Clint Ferguson Jr.
 cferguson@tertexas.com

Claim #
Unit #

QTY	UNIT PRICE	TOTAL
1	9,420.00	9,420.00
10	140.00	1,400.00
1	40.00	40.00
4	85.00	340.00
1	605.00	605.00
1	330.00	330.00
1	750.00	750.00
1	265.00	265.00
1	60.00	60.00
1	4,050.00	4,050.00
1	370.00	370.00



Truck & Equipment Repair of Texas

TER Texas - HOU
 PO BOX 94
 Conroe TX 77305
 United States
 936-539-5305

Quote

Quote # HOU18868

Date 9/26/2024

Expiration Date 10/6/2024

Item	Description	Qty	Unit Price	Amount
	(2020+), including Diesel			
Shop Supplies	Shop Supplies	1	150.00	150.00
Freight	Freight	1	1,200.00	1,200.00
Install	Instal/ QC Make-ready	26	150.00	3,750.00
	FURNISH AND INSTALL 9' RUGBY DUMP DU9-3 ELIMINATOR 12" SIDES/FOLD DOWN SIDES HOIST AND SUBFRAME WEIGHT SLIP AND CERTIFICATION			
	*INSTALL OEM B/U CAMERA *INSTALL HD HITCH AND 7-WAY PLUG *INSTALL BACKPACK *INSTALL 4 CORNER STROBES AMBER/BLUE *INSTALL CHEVRON ON TAILGATE *INSTALL DEE ZEE RUNNING BOARDS			

Thank you for the opportunity to quote your project. Please call us today for scheduling.

50% deposit required on all special order items

Total \$22,730.00

Accepted By _____

Accepted Date _____

Prepared for: **WESLEY BAKER**

CITY OF LEAGUE CITY

Prepared by: Cody Delaney

09/27/2024

Chastang Ford | 6200 N. Loop East Houston Texas | 770261936

2025 F-150 4x2 SuperCrew Cab 5.5' box 145" WB XL (W1K)

Price Level: 520 | Quote ID: LEAGUW1K2

As Configured Vehicle

Code	Description	MSRP
W1K	Base Vehicle Price (W1K)	\$43,895.00
101A	Equipment Group 101A Standard <i>Includes</i> - Engine: 2.7L V6 EcoBoost <i>Includes auto start-stop technology.</i> - Transmission: Electronic 10-Speed Automatic <i>Includes SelectShift with progressive range select and selectable drive modes: normal, ECO, sport, tow/haul, slippery and trail.</i> - 3.55 Axle Ratio - GVWR: 6,426 lbs Payload Package - Tires: 245/70R17 BSW A/S - Wheels: 17" Silver Steel - Radio: AM/FM Stereo w/6 Speakers <i>Includes auxiliary audio input jack.</i> - SYNC 4 w/Enhanced Voice Recognition <i>Includes 12" LCD capacitive touchscreen with swipe capability, wireless phone connection, cloud connected, AppLink with App catalog, 911 Assist, Apple CarPlay and Android Auto compatibility, digital owners manual and conversational voice command recognition.</i>	N/C
99P	Engine: 2.7L V6 EcoBoost <i>Includes auto start-stop technology</i>	Included
44G	Transmission: Electronic 10-Speed Automatic <i>Includes SelectShift with progressive range select and selectable drive modes: normal, ECO, sport, tow/haul, slippery and trail</i>	Included
X19	3.55 Axle Ratio	Included
STDGV	GVWR: 6,426 lbs Payload Package	Included
STDTR	Tires: 245/70R17 BSW A/S	Included
64C	Wheels: 17" Silver Steel	Included
A	Vinyl 40/20/40 Front Seat	N/C
145WB	145" Wheelbase	STD
STDRD	Radio: AM/FM Stereo w/6 Speakers <i>Includes auxiliary audio input jack.</i> <i>Includes:</i> - SYNC 4 w/Enhanced Voice Recognition <i>Includes 12" LCD capacitive touchscreen with swipe capability, wireless phone connection, cloud connected, AppLink with App catalog, 911 Assist, Apple CarPlay and Android Auto compatibility, digital owners manual and conversational voice command recognition.</i>	Included
16B	Black Platform Running Boards	\$250.00

Prices and content availability as shown are subject to change and should be treated as estimates only. Actual base vehicle, package and option pricing may vary from this estimate because of special local pricing, availability or pricing adjustments not reflected in the dealer's computer system. See salesperson for the most current information.

Note: Prices and content availability as shown are subject to change and should be treated as estimates only. Actual base vehicle, package and option pricing may vary from this estimate because of special local pricing, availability or pricing adjustments not reflected in the dealer's computer system. See salesperson for the most current information.

Prepared for: WESLEY BAKER

CITY OF LEAGUE CITY

Prepared by: Cody Delaney

09/27/2024



Chastang Ford | 6200 N. Loop East Houston Texas | 770261936

2025 F-150 4x2 SuperCrew Cab 5.5' box 145" WB XL (W1K)

Price Level: 520 | Quote ID: LEAGUW1K2

As Configured Vehicle (cont'd)

Code	Description	MSRP
67T	Integrated Trailer Brake Controller	\$275.00
153	Front License Plate Bracket <i>Standard in states where required by law, optional to all others.</i>	N/C
PAINT	Monotone Paint Application	STD
WARANT	Fleet Customer Powertrain Limited Warranty Requires valid FIN code. <i>Ford is increasing the 5-year 60,000-mile limited powertrain warranty to 5-years, 100,000 miles. Only Fleet purchasers with a valid Fleet Identification Number (FIN code) will receive the extended warranty. When the sale is entered into the sales reporting system with a sales type fleet along with a valid FIN code, the warranty extension will automatically be added to the vehicle. The extension will stay with the vehicle even if it is subsequently sold to a non-fleet customer before the expiration. This extension applies to both gas and diesel powertrains. Dealers can check for the warranty extension on eligible fleet vehicles in OASIS. Please refer to the Warranty and Policy Manual section 3.13.00 Gas Engine Commercial Warranty. This change will also be reflected in the printed Warranty Guided distributed with the purchase of every new vehicle.</i>	N/C
425	50 State Emissions System	STD
YZ_01	Oxford White	N/C
AS_02	Black w/Medium Dark Slate w/Vinyl 40/20/40 Front Seat	N/C
	TER QUOTE HOU18859	\$2,815.00
	FLOOR PLAN INTEREST	\$1,042.00
SUBTOTAL		\$48,277.00
Destination Charge		\$1,995.00
TOTAL		\$50,272.00

Prices and content availability as shown are subject to change and should be treated as estimates only. Actual base vehicle, package and option pricing may vary from this estimate because of special local pricing, availability or pricing adjustments not reflected in the dealer's computer system. See salesperson for the most current information.

Note: Prices and content availability as shown are subject to change and should be treated as estimates only. Actual base vehicle, package and option pricing may vary from this estimate because of special local pricing, availability or pricing adjustments not reflected in the dealer's computer system. See salesperson for the most current information.

Prepared for: WESLEY BAKER

CITY OF LEAGUE CITY

Prepared by: Cody Delaney

09/27/2024



Chastang Ford | 6200 N. Loop East Houston Texas | 770261936

2025 F-150 4x2 SuperCrew Cab 5.5' box 145" WB XL (W1K)

Price Level: 520 | Quote ID: LEAGUW1K2

Pricing Summary - Single Vehicle

	MSRP
<i>Vehicle Pricing</i>	
Base Vehicle Price	\$43,895.00
Options	\$525.00
Colors	\$0.00
Upfitting	\$3,857.00
Fleet Discount	\$0.00
Fuel Charge	\$0.00
Destination Charge	\$1,995.00
Subtotal	\$50,272.00

Pre-Tax Adjustments

Code	Description	MSRP
01	DISCOUNT AND CONCESSION	-\$4,277.00
BB	BUYBOARD FEE CONTRACT# 724-23	\$0.00
Total		\$45,995.00

Customer Signature

Acceptance Date

Prices and content availability as shown are subject to change and should be treated as estimates only. Actual base vehicle, package and option pricing may vary from this estimate because of special local pricing, availability or pricing adjustments not reflected in the dealer's computer system. See salesperson for the most current information.

Note: Prices and content availability as shown are subject to change and should be treated as estimates only. Actual base vehicle, package and option pricing may vary from this estimate because of special local pricing, availability or pricing adjustments not reflected in the dealer's computer system. See salesperson for the most current information.



Truck & Equipment Repair of Texas

TER Texas - HOU
 PO BOX 94
 Conroe TX 77305
 United States
 936-539-5305

Quote

ADDRESS

Chastang Ford
 P.O. Box 21127
 Houston TX 77226-1127
 United States

Quote # HOU18859
Date 9/25/2024
Expiration Date 10/6/2024
Sales Rep Clint Ferguson Jr.
 cferguson@lertexas.com

Claim #
Unit #

QTY	DESCRIPTION	UNIT PRICE	TOTAL PRICE
	Ford		
	F-150		
1	Gloss Black Aluminum 69" Truck Tool Box with Low Profile	600.00	600.00
4	Directional, 4 LED - Surface mount, Split Color, Amber/Blue (2) Installed on front grille (2) Installed on rear tailgate	85.00	340.00
1	Spray In Bedliner for pickup truck	300.00	300.00
1	Print + Install Graphics Chevrons	750.00	750.00
1	Shop Supplies	75.00	75.00
5	Installation of Toolbox Installation of Nerf Bars Installation of LED Lights	150.00	750.00

Thank you for the opportunity to quote your project. Please call us today for scheduling.

Total \$2,815.00

50% deposit required on all special order items.

Accepted By _____

Accepted Date _____

Prepared for: WESLEY BAKER

Unit 863



CITY OF LEAGUE CITY

Prepared by: Cody Delaney

09/27/2024

Chastang Ford | 6200 N. Loop East Houston Texas | 770281936

2025 F-750 Diesel Regular Cab Base (F7D)

Price Level: 515

As Configured Vehicle

Code	Description	MSRP
F7D	Base Vehicle Price (F7D)	\$80,895.00
99C	6.7L Power Stroke V8 Turbo Diesel - 270 HP @ 2400 RPM Includes Engine Exhaust Brake and manual regen capability. Torque: 700 ft.lbs. @ 1500 rpm. <i>Governed RPM: 3200. Includes CARB clean idle label - may be removed if un-necessary</i>	STD
425	50-State Emissions	N/C
44D	Ford TorqShift HD 10-Speed Automatic - with PTO Provision <i>Includes low/haul</i>	STD
643	Wheels, Front 22.5x8.25 White Powder Coated Steel, 10-Hole <i>(285.75MM BC) hub piloted, flanged nut, metric mount, 8.25 DC rims; with steel hubs</i>	STD
T2B	Tires, Front Two 11R22.5G Goodyear Fuel Max RSA (497 rev/mile)	STD
663	Wheels, Rear 22.5x8.25 White Powder Coated Steel, 10-Hole <i>(285.75MM BC) hub piloted, flanged nut, metric mount, 8.25 DC rims; with steel hubs</i>	STD
R2B	Tires, Rear Four 11R22.5G Goodyear Fuel Max RSA (497 rev/mile)	STD
67A	Air Brakes (4 WHEEL DRUM) - Straight Truck w/Traction Control <i>Meritor Q-Plus with ABS, Bendix Anti-Lock Brake System, 4-channel. Includes 15" x 4" front brakes, dual direct reading air pressure gauges, brake lines color coded nylon, Bendix 13.2 CFM capacity air compressor, instrument panel mounted yellow knob parking brake control valve, automatic slack adjusters front and rear, two rear spring parking air brake chambers mounted on front of rear axle, three drain valves and two air tanks (Reference Body Builders Book for location) Rear brake size and components dependent upon axle selection. Uses existing ABS system to minimize wheel slipping during acceleration. Usage determined by the air brake package selected. (Not recommended with Hi-Rail Train Systems). Deletes hand operated park brake lever.</i> <i>Includes:</i> <i>Air Dryer, Bendix AD/IS w/Heater</i> <i>Mounted left frame rail (for Hydraulic brake diesel applications that include air suspension or stand alone engine air compressor)</i>	N/C

Prices and content availability as shown are subject to change and should be treated as estimates only. Actual base vehicle, package and option pricing may vary from this estimate because of special local pricing, availability or pricing adjustments not reflected in the dealer's computer system. See salesperson for the most current information.

Note: Prices and content availability as shown are subject to change and should be treated as estimates only. Actual base vehicle, package and option pricing may vary from this estimate because of special local pricing, availability or pricing adjustments not reflected in the dealer's computer system. See salesperson for the most current information.

Prepared for: WESLEY BAKER

CITY OF LEAGUE CITY

Prepared by: Cody Delaney

09/27/2024



Chastang Ford | 6200 N. Loop East Houston Texas | 770281936

2025 F-750 Diesel Regular Cab Base (F7D)

Price Level: 515

As Configured Vehicle (cont'd)

Code	Description	MSRP
67C	Air Brakes (FRONT DISC / REAR DRUM) - Straight Truck w/Traction Control <i>Bendix 13.2 CFM capacity air compressor, instrument panel mounted yellow knob parking brake control valve. Deletes hand operated park brake lever.</i> <i>Includes:</i> <i>- Air Dryer, Bendix AD/IS w/Heater</i> <i>Mounted left frame rail (for Hydraulic brake diesel applications that include air suspension or stand alone engine air compressor).</i>	\$3,020.00
18A	Electronic Stability Control DELETE <i>Deletes the standard ESC feature.</i>	-\$290.00
62D	Air Dryer, Bendix AD/IS w/Heater <i>Mounted left frame rail (for Hydraulic brake diesel applications that include air suspension or stand alone engine air compressor).</i>	Included
43P	12,000 lb. Cap. Non-Driving - Dana E-1202I - I-Beam Type	\$525.00
61E	Taper-Leaf Springs, Parabolic - 13,200 lb. Cap <i>3-leaf, 62" x 3.15". Also includes, standard duty, dual, double acting shock absorbers.</i>	\$365.00
475	21,000 lb. Single Reduction - Open - Dana / Spicer 21060S <i>NOTE When specifying an axle ratio, check performance guidelines for startability and gradeability.</i>	STD
68P	Multi-Leaf Springs - 21,000 lb. Cap <i>11-leaf. Includes 2,000 lb auxiliary springs for load stabilization.</i>	STD
X6D	6.50 Axle Ratio	N/C
158WB	158" Wheelbase/84" CA/49" AF/246" OAL	STD
535	Single Channel - Straight 'C' 15.14 SM, 80,000 PSI <i>1.211,200 RBM. High strength low alloy steel. 10.250" x 3.092" x 0.375" (260.4mm x 78.5mm x 9.5mm)</i> <i>Includes:</i> <i>- GVWR Limit 37,000 lbs</i>	STD
91G	Under Cab, Right Side Outlet, Switchback-Style <i>Single, horizontal muffler, right side, under cab, outside of frame rail with rear discharge.</i>	STD

Prices and content availability as shown are subject to change and should be treated as estimates only. Actual base vehicle, package and option pricing may vary from this estimate because of special local pricing, availability or pricing adjustments not reflected in the dealer's computer system. See salesperson for the most current information.

Note: Prices and content availability as shown are subject to change and should be treated as estimates only. Actual base vehicle, package and option pricing may vary from this estimate because of special local pricing, availability or pricing adjustments not reflected in the dealer's computer system. See salesperson for the most current information.

Prepared for: **WESLEY BAKER**

CITY OF LEAGUE CITY

Prepared by: Cody Delaney

09/27/2024



Chastang Ford | 6200 N. Loop East Houston Texas | 770261936

2025 F-750 Diesel Regular Cab Base (F7D)

Price Level: 515

As Configured Vehicle (cont'd)

Code	Description	MSRP
65B	Fuel Tank - LH 50 Gallon Rectangular - Aluminum	STD
STDALT	Extra Heavy Duty Alternator - 12-Volt, 200 Amp Denso SC5	Included
55M	Jump Start Stud - Remote Mounted	\$90.00
63B	Battery - Two 900 CCA, 1800 Total, Includes Steel Battery Box 12Volt, Motorcraft	\$60.00
16V	Voltmeter Available in message center.	\$100.00
88A	30/0/30 Fixed Driver & Fixed Passenger w/Console - Vinyl	STD
600A	Preferred Equipment Package 600A <i>Includes:</i> - Bumper, Front - Black, Full Width - Wheel Seals, Front - Oil lubricated, SKF ScotSeal PlusXL Seals - Wheel Seals, Rear - Oil lubricated, SKF ScotSeal PlusXL Seals - Manual Regen Initiation - Driver Interface in Message Center - Engine Exhaust Brake - Extra Heavy Duty Alternator - 12-Volt, 200 Amp Denso SC5 - Painted Grille - Plastic - Lights - Roof Marker/Clearance - Amber Lenses, 5 Lights - Tow Hooks, Front (2) - Frame-Mounted, Painted Black - Four Body Builder Switches - Mounted in Center Instrument Panel - With connector access located in engine compartment. Amperages vary by switch: 10, 15, 25, 25. - Floor Covering - Black Vinyl - Intelligent Oil Life Monitor - Steering Column - Tilt / Telescoping - Steering Wheel - Black PVC w/Integral Cruise Control Switches, Includes Audio Controls - Body Builder Wiring - At Back of Cab, Combined - Includes sealed connectors for 2 ground circuits, with combined left/stop, combined right/stop, park lamps, back up lamps. Also includes 2 additional pass through wires to cab.	N/C
61M	Rear View Camera w/Mirror Display Rear view mirror video with full length display included in kit. To be installed by Upfitter	\$510.00
90P	Power Equipment Group - (Included in (90A) Appearance Group) Includes power front side windows, power door locks, door trim panel and passive anti-theft system. <i>Includes:</i> - SecuriLock Passive Anti-Theft System	\$550.00

Prices and content availability as shown are subject to change and should be treated as estimates only. Actual base vehicle, package and option pricing may vary from this estimate because of special local pricing, availability or pricing adjustments not reflected in the dealer's computer system. See salesperson for the most current information.

Note: Prices and content availability as shown are subject to change and should be treated as estimates only. Actual base vehicle, package and option pricing may vary from this estimate because of special local pricing, availability or pricing adjustments not reflected in the dealer's computer system. See salesperson for the most current information.

Prepared for: WESLEY BAKER

CITY OF LEAGUE CITY

Prepared by: Cody Delaney

09/27/2024



Chastang Ford | 6200 N. Loop East Houston Texas | 770261936

2025 F-750 Diesel Regular Cab Base (F7D)

Price Level: 515

As Configured Vehicle (cont'd)

Code	Description	MSRP
	<i>The SecuriLock Passive Anti-Theft System is designed to help prevent the engine from being started unless a coded key, programmed to the vehicle, is used. It helps protect against drive-away theft through an electronically coded ignition key, its electronically coded ignition key features billions of possible codes to start the vehicle and is not compatible with non-OEM aftermarket remote start systems.</i> - Remote Keyless Entry w/2 Key Fobs	
588	Radio: AM/FM Stereo w/2 Speakers, USB Input, Clock Display and Bluetooth	STD
85A	SecuriLock Passive Anti-Theft System <i>The SecuriLock Passive Anti-Theft System is designed to help prevent the engine from being started unless a coded key, programmed to the vehicle, is used. It helps protect against drive-away theft through an electronically coded ignition key, its electronically coded ignition key features billions of possible codes to start the vehicle and is not compatible with non-OEM aftermarket remote start systems</i>	Included
54M	Mirrors, Dual - Heated Rectangular, XL2020 - 96" Width <i>Integral mirror, sail type, manual fold, solid black finish.</i>	STD
PAINT	Paint Type - Environmentally Friendly, "3 - Wet System"	STD
YZ_01	Oxford White	N/C
E_01	Gray	N/C
	TER QUOTE HOU18869	\$34,160.00
	FLOOR PLAN INTEREST	\$2,723.00
SUBTOTAL		\$122,708.00
Fuel Charge (12)		\$0.00
Destination Charge		\$2,495.00
TOTAL		\$125,203.00

Prices and content availability as shown are subject to change and should be treated as estimates only. Actual base vehicle, package and option pricing may vary from this estimate because of special local pricing, availability or pricing adjustments not reflected in the dealer's computer system. See salesperson for the most current information.

Note: Prices and content availability as shown are subject to change and should be treated as estimates only. Actual base vehicle, package and option pricing may vary from this estimate because of special local pricing, availability or pricing adjustments not reflected in the dealer's computer system. See salesperson for the most current information.

Prepared for: **WESLEY BAKER**

CITY OF LEAGUE CITY

Prepared by: Cody Delaney

09/27/2024



Chastang Ford | 6200 N. Loop East Houston Texas | 770261936

2025 F-750 Diesel Regular Cab Base (F7D)

Price Level: 515

Pricing Summary - Single Vehicle

	MSRP
<i>Vehicle Pricing</i>	
Base Vehicle Price	\$80,895.00
Options	\$4,930.00
Colors	\$0.00
Upfitting	\$36,883.00
Fleet Discount	\$0.00
Fuel Charge (12)	\$0.00
Destination Charge	\$2,495.00
Subtotal	\$125,203.00

Pre-Tax Adjustments

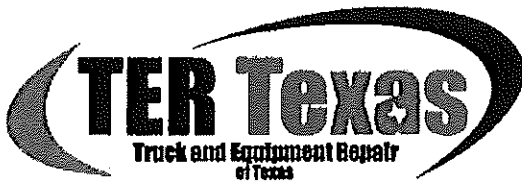
Code	Description	MSRP
01	DISCOUNT AND CONCESSION	-\$6,325.00
BB	BUYBOARD FEE CONTRACT# 723-23	\$0.00
Total		\$118,878.00

Customer Signature

Acceptance Date

Prices and content availability as shown are subject to change and should be treated as estimates only. Actual base vehicle, package and option pricing may vary from this estimate because of special local pricing, availability or pricing adjustments not reflected in the dealer's computer system. See salesperson for the most current information.

Note: Prices and content availability as shown are subject to change and should be treated as estimates only. Actual base vehicle, package and option pricing may vary from this estimate because of special local pricing, availability or pricing adjustments not reflected in the dealer's computer system. See salesperson for the most current information.



Truck & Equipment Repair of Texas

TER Texas - HOU
 PO BOX 94
 Conroe TX 77305
 United States
 936-539-5305

Quote

Quote # HOU18869
Date 9/26/2024
Expiration Date 10/6/2024
Sales Rep Clint Ferguson Jr.
 cferguson@tertexas.com

ADDRESS

Chastang Ford
 P.O. Box 21127
 Houston TX 77226-1127
 United States

Claim #
Unit #

AMRES	YEAR	Make	MODEL	QTY	UNIT PRICE	TOTAL
	2024	Ford	F-750	84		
ITEM	DESCRIPTION	QTY	UNIT PRICE	TOTAL		
NPN	Rugby Mfg Titan Dump body with Hoist Pkg	1	16,745.00	16,745.00		
Paint-Black	Paint Labor and Black Paint Materials	10	140.00	1,400.00		
FOR1169246	6.7L Diesel - 144% -MY2020+ F250-F800 12V elec/Hyd Shift PTO 4X4 4X2 PTO and Pump Combo Kit 210FMMFP-B461	1	4,575.00	4,575.00		
BUY405BC	Buyers Products Chrome Plated Anti-Sail Brackets 26.13x21 Inch	1	35.00	35.00		
CUR56475	20" USCAR WIRING EXTENSION HARNESS	1	40.00	40.00		
CUR55415	OEM 7 way Connector	1	25.00	25.00		
TERCUSTOMFA B	Fabricate and install rear ICC bumper reinforced for rear receiver hitch	1	750.00	750.00		
BUYPH30	Buyers Products 30 Ton Pintle Hook	1	195.00	195.00		
BUYBA0972	Buyers Products 97 Decibel Self-Grounding Back Up Alarm	1	35.00	35.00		
ECCED3704AB	Directional, 4 LED - Surface mount, Split Color, Amber/Blue	4	85.00	340.00		
TERGRAPHIC	Print + Install Graphics	1	750.00	750.00		
Shop Supplies	Shop Supplies Hyd Hoses, fittings and hyd oil	1	1,520.00	1,520.00		
Shop Supplies	Rear airline system	1	1,500.00	1,500.00		
Freight	Freight	1	1,000.00	1,000.00		



Truck & Equipment Repair of Texas

TER Texas - HOU
 PO BOX 94
 Conroe TX 77305
 United States
 936-539-5305

Quote

Quote # HOU18869

Date 9/26/2024

Expiration Date 10/6/2024

Item	Description	Qty	Unit Price	Total Price
Install	Install QC Make-ready FURNISH AND INSTALL RUGBY MFG TITAN DUMP BODY WITH HOIST PKG 7-8 YD >10' 4" X 96" (OD), CARBON STEEL TITAN DUMP BODY - 30" SIDES - 40" TAIL GATE - SPREADER APRON INSTALL - AIR TAILGATE INSTALL LOOSE 1/2 CAB SHIELD AND LED LIGHT KIT >SF5520 DM HOIST WEIGHT SLIP AND CERTIFICATION *INSTALL FACTROY B/U CAMERA *INSTALL B/U ALARM *30k PINTLE HOOK AND 7-WAY PLUG *REAR AIRLINE SYSTEM *INSTALL 4 CORNER STROBES AMBER/BLUE *INSTALL CHEVRON ON TAILGATE	35	150.00	5,250.00

Thank you for the opportunity to quote your project. Please call us today for scheduling.

50% deposit required on all special order items.

Total \$34,160.00

Accepted By _____

Accepted Date _____

Prepared for: **WESLEY BAKER**

CITY OF LEAGUE CITY

Prepared by: Cody Delaney

09/27/2024

Chastang Ford | 6200 N. Loop East Houston Texas | 770281936

2025 F-750 Diesel Regular Cab Base (F7D)

Price Level: 515

As Configured Vehicle

Code	Description	MSRP
F7D	Base Vehicle Price (F7D)	\$80,895.00
99C	6.7L Power Stroke V8 Turbo Diesel - 270 HP @ 2400 RPM Includes Engine Exhaust Brake and manual regen capability. Torque: 700 ft.lbs. @ 1500 rpm. <i>Governed RPM: 3200. Includes CARB clean idle label - may be removed if un-necessary</i>	STD
425	50-State Emissions	N/C
44D	Ford TorqShift HD 10-Speed Automatic - with PTO Provision <i>Includes tow/haul</i>	STD
643	Wheels, Front 22.5x8.25 White Powder Coated Steel, 10-Hole <i>(285.75MM BC) hub piloted, flanged nut, metric mount, 8.25 DC rims; with steel hubs</i>	STD
T2B	Tires, Front Two 11R22.5G Goodyear Fuel Max RSA (497 rev/mile)	STD
663	Wheels, Rear 22.5x8.25 White Powder Coated Steel, 10-Hole <i>(285.75MM BC) hub piloted, flanged nut, metric mount, 8.25 DC rims; with steel hubs</i>	STD
R2B	Tires, Rear Four 11R22.5G Goodyear Fuel Max RSA (497 rev/mile)	STD
67A	Air Brakes (4 WHEEL DRUM) - Straight Truck w/Traction Control <i>Meritor Q-Plus with ABS, Bendix Anti-Lock Brake System, 4-channel. Includes 15" x 4" front brakes, dual direct reading air pressure gauges, brake lines color coded nylon, Bendix 13.2 CFM capacity air compressor, instrument panel mounted yellow knob parking brake control valve, automatic slack adjusters front and rear, two rear spring parking air brake chambers mounted on front of rear axle, three drain valves and two air tanks (Reference Body Builders Book for location) Rear brake size and components dependent upon axle selection. Uses existing ABS system to minimize wheel slipping during acceleration. Usage determined by the air brake package selected. (Not recommended with Hi-Rail Train Systems). Deletes hand operated park brake lever.</i> <i>Includes:</i> <i>Air Dryer, Bendix AD/IS w/Heater</i> <i>Mounted left frame rail (for Hydraulic brake diesel applications that include air suspension or stand alone engine air compressor)</i>	N/C

Prices and content availability as shown are subject to change and should be treated as estimates only. Actual base vehicle, package and option pricing may vary from this estimate because of special local pricing, availability or pricing adjustments not reflected in the dealer's computer system. See salesperson for the most current information.

Note: Prices and content availability as shown are subject to change and should be treated as estimates only. Actual base vehicle, package and option pricing may vary from this estimate because of special local pricing, availability or pricing adjustments not reflected in the dealer's computer system. See salesperson for the most current information.

Prepared for: **WESLEY BAKER**

CITY OF LEAGUE CITY

Prepared by: Cody Delaney

09/27/2024



Chastang Ford | 6200 N. Loop East Houston Texas | 770261936

2025 F-750 Diesel Regular Cab Base (F7D)

Price Level: 515

As Configured Vehicle (cont'd)

Code	Description	MSRP
67C	Air Brakes (FRONT DISC / REAR DRUM) - Straight Truck w/Traction Control <i>Bendix 13.2 CFM capacity air compressor, instrument panel mounted yellow knob parking brake control valve. Deletes hand operated park brake lever.</i> <i>Includes:</i> <i>- Air Dryer, Bendix AD/IS w/Heater</i> <i>Mounted left frame rail (for Hydraulic brake diesel applications that include air suspension or stand alone engine air compressor).</i>	\$3,020.00
18A	Electronic Stability Control DELETE <i>Deletes the standard ESC feature.</i>	-\$290.00
62D	Air Dryer, Bendix AD/IS w/Heater <i>Mounted left frame rail (for Hydraulic brake diesel applications that include air suspension or stand alone engine air compressor).</i>	Included
43P	12,000 lb. Cap. Non-Driving - Dana E-1202I - I-Beam Type	\$525.00
61E	Taper-Leaf Springs, Parabolic - 13,200 lb. Cap <i>3-leaf, 62" x 3 15". Also includes, standard duty, dual, double acting shock absorbers.</i>	\$365.00
475	21,000 lb. Single Reduction - Open - Dana / Spicer 21060S <i>NOTE: When specifying an axle ratio, check performance guidelines for startability and gradeability.</i>	STD
68P	Multi-Leaf Springs - 21,000 lb. Cap <i>11-leaf. Includes 2,000 lb auxiliary springs for load stabilization.</i>	STD
X6D	6.50 Axle Ratio	N/C
158WB	158" Wheelbase/84" CA/49" AF/246" OAL	STD
535	Single Channel - Straight 'C' 15.14 SM, 80,000 PSI <i>1,211,200 RBM. High strength low alloy steel. 10.250" x 3.092" x 0.375" (260.4mm x 78.5mm x 9.5mm).</i> <i>Includes:</i> <i>- GVWR Limit 37,000 lbs</i>	STD
91G	Under Cab, Right Side Outlet, Switchback-Style <i>Single, horizontal muffler, right side, under cab, outside of frame rail with rear discharge.</i>	STD

Prices and content availability as shown are subject to change and should be treated as estimates only. Actual base vehicle, package and option pricing may vary from this estimate because of special local pricing, availability or pricing adjustments not reflected in the dealer's computer system. See salesperson for the most current information.

Note: Prices and content availability as shown are subject to change and should be treated as estimates only. Actual base vehicle, package and option pricing may vary from this estimate because of special local pricing, availability or pricing adjustments not reflected in the dealer's computer system. See salesperson for the most current information.

Prepared for: **WESLEY BAKER**

CITY OF LEAGUE CITY

Prepared by: Cody Delaney

09/27/2024



Chastang Ford | 6200 N. Loop East Houston Texas | 770261936

2025 F-750 Diesel Regular Cab Base (F7D)

Price Level: 515

As Configured Vehicle (cont'd)

Code	Description	MSRP
65B	Fuel Tank - LH 50 Gallon Rectangular - Aluminum	STD
STDALT	Extra Heavy Duty Alternator - 12-Volt, 200 Amp Denso SC5	Included
55M	Jump Start Stud - Remote Mounted	\$90.00
63B	Battery - Two 900 CCA, 1800 Total, Includes Steel Battery Box <i>12Volt, Motorcraft</i>	\$60.00
16V	Voltmeter <i>Available in message center.</i>	\$100.00
88A	30/0/30 Fixed Driver & Fixed Passenger w/Console - Vinyl	STD
600A	Preferred Equipment Package 600A <i>Includes:</i> - Bumper, Front - Black, Full Width - Wheel Seals, Front - Oil lubricated, SKF ScotSeal PlusXL Seals - Wheel Seals, Rear - Oil lubricated, SKF ScotSeal PlusXL Seals - Manual Regen Initiation - Driver Interface in Message Center - Engine Exhaust Brake - Extra Heavy Duty Alternator - 12-Volt, 200 Amp Denso SC5 - Painted Grilla - Plastic - Lights - Roof Marker/Clearance - Amber Lenses, 5 Lights - Tow Hooks, Front (2) - Frame-Mounted, Painted Black - Four Body Builder Switches - Mounted in Center Instrument Panel - With connector access located in engine compartment. Amperages vary by switch: 10, 15, 25, 25. - Floor Covering - Black Vinyl - Intelligent Oil Life Monitor - Steering Column - Tilt / Telescoping - Steering Wheel - Black PVC w/Integral Cruise Control Switches, includes Audio Controls - Body Builder Wiring - At Back of Cab, Combined - Includes sealed connectors for 2 ground circuits, with combined left/stop, combined right/stop, park lamps, back up lamps. Also includes 2 additional pass through wires to cab.	N/C
61M	Rear View Camera w/Mirror Display <i>Rear view mirror video with full length display included in kit. To be installed by Upfitter</i>	\$510.00
90P	Power Equipment Group - (Included in (90A) Appearance Group) <i>Includes power front side windows, power door locks, door trim panel and passive anti-lift system.</i> <i>Includes:</i> - SecurILock Passive Anti-Theft System	\$550.00

Prices and content availability as shown are subject to change and should be treated as estimates only. Actual base vehicle, package and option pricing may vary from this estimate because of special local pricing, availability or pricing adjustments not reflected in the dealer's computer system. See salesperson for the most current information.

Note: Prices and content availability as shown are subject to change and should be treated as estimates only. Actual base vehicle, package and option pricing may vary from this estimate because of special local pricing, availability or pricing adjustments not reflected in the dealer's computer system. See salesperson for the most current information.

Prepared for: **WESLEY BAKER**

CITY OF LEAGUE CITY

Prepared by: Cody Delaney

09/27/2024



Chastang Ford | 6200 N. Loop East Houston Texas | 770261936

2025 F-750 Diesel Regular Cab Base (F7D)

Price Level: 515

As Configured Vehicle (cont'd)

Code	Description	MSRP
	<i>The SecurLock Passive Anti-Theft System is designed to help prevent the engine from being started unless a coded key, programmed to the vehicle, is used. It helps protect against drive-away theft through an electronically coded ignition key, its electronically coded ignition key features billions of possible codes to start the vehicle and is not compatible with non-OEM aftermarket remote start systems.</i> - Remote Keyless Entry w/2 Key Fobs	
588	Radio: AM/FM Stereo w/2 Speakers, USB Input, Clock Display and Bluetooth	STD
85A	SecurLock Passive Anti-Theft System <i>The SecurLock Passive Anti-Theft System is designed to help prevent the engine from being started unless a coded key, programmed to the vehicle, is used. It helps protect against drive-away theft through an electronically coded ignition key, its electronically coded ignition key features billions of possible codes to start the vehicle and is not compatible with non-OEM aftermarket remote start systems</i>	Included
54M	Mirrors, Dual - Heated Rectangular, XL2020 - 96" Width <i>Integral mirror, sail type, manual fold, solid black finish.</i>	STD
PAINT	Paint Type - Environmentally Friendly, "3 - Wet System"	STD
YZ_01	Oxford White	N/C
E_01	Gray	N/C
	TER QUOTE HOU18869	\$34,160.00
	FLOOR PLAN INTEREST	\$2,723.00
SUBTOTAL		\$122,708.00
Fuel Charge (12)		\$0.00
Destination Charge		\$2,495.00
TOTAL		\$125,203.00

Prices and content availability as shown are subject to change and should be treated as estimates only. Actual base vehicle, package and option pricing may vary from this estimate because of special local pricing, availability or pricing adjustments not reflected in the dealer's computer system. See salesperson for the most current information.

Note: Prices and content availability as shown are subject to change and should be treated as estimates only. Actual base vehicle, package and option pricing may vary from this estimate because of special local pricing, availability or pricing adjustments not reflected in the dealer's computer system. See salesperson for the most current information.

Prepared for: **WESLEY BAKER**

CITY OF LEAGUE CITY

Prepared by: Cody Delaney

09/27/2024



Chastang Ford | 6200 N. Loop East Houston Texas | 770261936

2025 F-750 Diesel Regular Cab Base (F7D)

Price Level: 515

Pricing Summary - Single Vehicle

MSRP

Vehicle Pricing

Base Vehicle Price	\$80,895.00
Options	\$4,930.00
Colors	\$0.00
Upfitting	\$36,883.00
Fleet Discount	\$0.00
Fuel Charge (12)	\$0.00
Destination Charge	\$2,495.00
Subtotal	\$125,203.00

Pre-Tax Adjustments

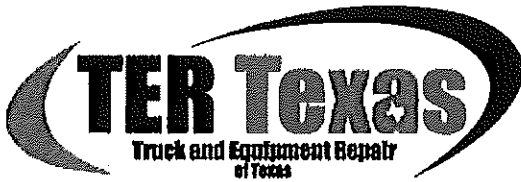
Code	Description	MSRP
01	DISCOUNT AND CONCESSION	-\$6,325.00
BB	BUYBOARD FEE CONTRACT# 723-23	\$0.00
Total		\$118,878.00

Customer Signature

Acceptance Date

Prices and content availability as shown are subject to change and should be treated as estimates only. Actual base vehicle, package and option pricing may vary from this estimate because of special local pricing, availability or pricing adjustments not reflected in the dealer's computer system. See salesperson for the most current information.

Note: Prices and content availability as shown are subject to change and should be treated as estimates only. Actual base vehicle, package and option pricing may vary from this estimate because of special local pricing, availability or pricing adjustments not reflected in the dealer's computer system. See salesperson for the most current information.



Truck & Equipment Repair of Texas

TER Texas - HOU
 PO BOX 94
 Conroe TX 77305
 United States
 936-539-5305

Quote

ADDRESS

Chastang Ford
 P.O. Box 21127
 Houston TX 77226-1127
 United States

Quote # HOU18869
Date 9/26/2024
Expiration Date 10/6/2024
Sales Rep Clint Ferguson Jr.
 cferguson@tertexas.com

Claim #
Unit #

YEAR	MAKE	MODEL	QTY	UNIT PRICE	TOTAL
2024	Ford	F-750	84		
Item	DESCRIPTION	QTY	UNIT PRICE	TOTAL	
NPN	Rugby Mfg Titan Dump body with Hoist Pkg	1	16,745.00	16,745.00	
Paint-Black	Paint Labor and Black Paint Materials	10	140.00	1,400.00	
FOR1169246	6.7L Diesel - 144% -MY2020+ F250-F600 12V elec/Hyd Shift PTO 4X4 4X2 PTO and Pump Combo Kit 210FMMFP-B461	1	4,575.00	4,575.00	
BUY405BC	Buyers Products Chrome Plated Anti-Sail Brackets 26.13x21 Inch	1	35.00	35.00	
CUR56475	20" USCAR WIRING EXTENSION HARNESS	1	40.00	40.00	
CUR55415	OEM 7 way Connector	1	25.00	25.00	
TERCUSTOMFA B	Fabricate and install rear ICC bumper reinforced for rear receiver hitch	1	750.00	750.00	
BUYPH30	Buyers Products 30 Ton Pintle Hook	1	195.00	195.00	
BUYBA0972	Buyers Products 97 Decibel Self-Grounding Back Up Alarm	1	35.00	35.00	
ECCED3704AB	Directional, 4 LED - Surface mount, Split Color, Amber/Blue	4	85.00	340.00	
TERGRAPHIC	Print + Install Graphics	1	750.00	750.00	
Shop Supplies	Shop Supplies Hyd Hoses, fittings and hyd oil	1	1,520.00	1,520.00	
Shop Supplies	Rear airline system	1	1,500.00	1,500.00	
Freight	Freight	1	1,000.00	1,000.00	



Truck & Equipment Repair of Texas

TER Texas - HOU
 PO BOX 94
 Conroe TX 77305
 United States
 936-539-5305

Quote

Quote # HOU18869

Date 9/26/2024

Expiration Date 10/8/2024

Item	Description	Qty	Unit Price	Amount
Install	Install QC Make-ready FURNISH AND INSTALL RUGBY MFG TITAN DUMP BODY WITH HOIST PKG 7-8 YD >10' 4" X 96" (OD), CARBON STEEL TITAN DUMP BODY - 30" SIDES - 40" TAILGATE - SPREADER APRON INSTALL - AIR TAILGATE INSTALL LOOSE 1/2 CAB SHIELD AND LED LIGHT KIT >SF5520 DM HOIST WEIGHT SLIP AND CERTIFICATION *INSTALL FACTORY B/U CAMERA *INSTALL B/U ALARM *30K PINTLE HOOK AND 7-WAY PLUG *REAR AIRLINE SYSTEM *INSTALL 4 CORNER STROBES AMBER/BLUE *INSTALL CHEVRON ON TAILGATE	35	150.00	5,250.00

Thank you for the opportunity to quote your project. Please call us today for scheduling.

50% deposit required on all special order items.

Total \$34,160.00

Accepted By _____

Accepted Date _____